

COAL OWNED BY BELTON FUEL CO, UNIONTOWN PA.

New Location
 DRILL DEEPER
 ABANDONMENT - 8/23/71

15'
 0.20 S
 1.00 W

COMPANY THE MANUFACTURERS LIGHT AND HEAT CO
 ADDRESS 800 UNION TRUST BLDG. PITTSBURGH PA.
 BY F.M. CLARK ET AL.
 TRACT _____ ACRES 117 LEASE No. 4041
 WELL (FARM) No. 2 SERIAL No. 3894
 ELEVATION (SPIRIT LEVEL) 1128'
 QUADRANGLE LITTLETON *MC*
 COUNTY MARSHALL DISTRICT LIBERTY
 ENGINEER Porter J. Cook
 ENGINEER'S REGISTRATION No. _____
 FILE No. _____ DRAWING No. Y-11-154
 DATE JUNE 28-1945 SCALE 1"=800'

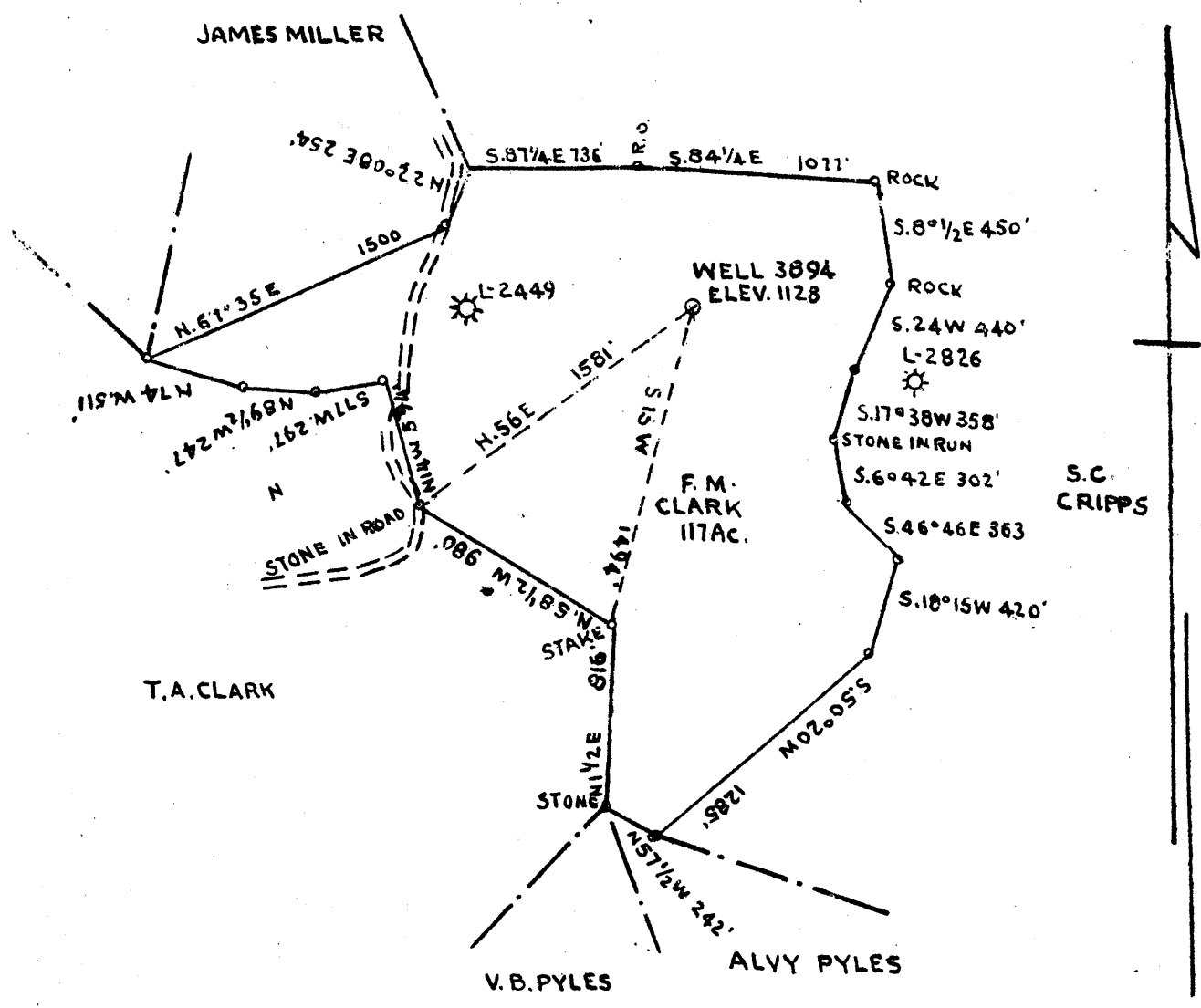
STATE OF WEST VIRGINIA
 DEPARTMENT OF MINES
 OIL AND GAS DIVISION
 CHARLESTON
WELL LOCATION MAP
 FILE No. MARS-165-P

+ DENOTES LOCATION OF WELL ON UNITED STATES TOPOGRAPHIC MAPS, SCALE 1 TO 62,500, LATITUDE AND LONGITUDE LINES BEING REPRESENTED BY BORDER LINES AS SHOWN.
 --- DENOTES ONE INCH SPACES ON BORDER LINE OF ORIGINAL TRACING.

AUG 30 1971

6-6 26

MAUDE JOHNSON



OWNED BY BELTON FUEL CO, UNIONTOWN PA.

LOCATION
 DEEPER
 SANDWENT

COMPANY THE MANUFACTURER'S LIGHT AND HEAT CO
 ADDRESS 800 UNION TRUST BLD'G, PITTSBURGH PA.
 FARM F.M. CLARK ET AL
 ACRES 117 LEASE NO. 4041
 WELL (FARM) NO. 2 SERIAL NO. 3894
 ELEVATION (SPIRIT LEVEL) 1128'
 QUADRANGLE LITTLETON
 COUNTY MARSHALL DISTRICT LIBERTY
 ENGINEER Porter J. Davis
 ENGINEER'S REGISTRATION NO. _____
 FILE NO. _____ DRAWING NO. Y-11-154
 DATE JUNE 28-1945 SCALE 1"=800'

STATE OF WEST VIRGINIA
 DEPARTMENT OF MINES
 OIL AND GAS DIVISION
 CHARLESTON

WELL LOCATION MAP

FILE No. MARS-165

+ DENOTES LOCATION OF WELL ON UNITED STATES TOPOGRAPHIC MAPS. SCALE 1 TO 62,500. LATITUDE AND LONGITUDE LINES BEING REPRESENTED BY BORDER LINES AS SHOWN.
 - DENOTES ONE INCH SPACES ON BORDER LINE OF ORIGINAL DRAWING.

5-3,19
 -1.01

WEST VIRGINIA DEPARTMENT OF MINES
OIL & GAS DIVISION
W E L L R E C O R D

Permit No. Mars 165

Littleton Quad:

Gas Well
CASING & TUBING

Company	The Manf. Light & Heat Co.			
Address	800 Union Trust Bldg., Pittsburgh, Pa.	10	288'5	288'5
Farm	F.M. Clark Acres 132	8 $\frac{1}{4}$	1369'1	Same
Location		6 5/8	1966'7	Same
Well No.	2- 3894 Elev. 1128'			
District	Liberty Marshall County			
Surface	F.M. Clark, c/o Mercantile B & T Co. Moundsville, W.Va.		Coal at 528' 24"; 716 48" ; 825' 60"	
Mineral	The M L & H. Co. Pittsburgh, Pa.			
Commenced	9-22-45			
Completed	11-24-45			
Not shot				
Open flow	26/10ths W in 1"			
Volume	39,960 C.F.			
Rock Pressure	74 lbs. 48 hrs.			
Fresh Water	None			

Clay & Rock	0	28
Red Rock	28	40
Slate & Lime	40	78
Red Rock	78	92
Slate & Lime	92	178
Red Rock	178	205
Slate & Lime	205	295
Red Rock	295	302
Slate & Lime	302	500
Sand	500	528
✓Waynesburg Coal	528	530
Slate & Lime	530	555
Red Rock	555	570
Slate & Lime	570	716
✓Mapletown Coal	716	720
Slate & Lime	720	825
✓Pittsburgh Coal	825	830
Slate & Lime	830	870
Red Rock	870	902
Slate & Lime	902	932
Sand	932	955
Slate	955	962
Red Rock	962	990
Slate & Lime	990	1020
Red Rock	1020	1040
Slate & Lime	1040	1122
Red Rock	1122	1147
Pink Rock	1147	1162
Slate & Shale	1162	1220
Red Rock	1220	1244
Slate & Lime	1244	1548
Shale	1548	1586
Lime & Slate	1586	1647
✓Salt Sand	1647	1665
Slate & Lime	1665	1780
Sand Broken	1780	1845
Slate & Lime	1845	1873
✓Maxon Sand <i>SA</i>	1873	1914
Slate	1914	1917
✓Big Lime	1917	1964
✓Big Injun Sand	1964	2215
Slate, Shells, Lime	2215	2671
Pink Rock	2671	2718
Slate & Lime	2718	2817
✓Gordon Sand	2817	2836
Slate & Lime	2836	2876
✓5th Sand	2876	2895
Slate & Shells	2895	2956
Lime	2956	2975
Slate, Shells, Lime	2975	3085
TOTAL DEPTH		3085

1917
1128

789

Little Gas 1882-1884

Gas 2819-2821