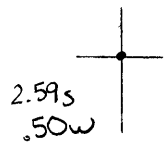


Latitude

Longitude



Topo Location

7.5' Loc. _____ 15' Loc. _____
 _____ (calc.) _____

Company Manufact Lt & Ht

Farm Ohio Cornedley #2

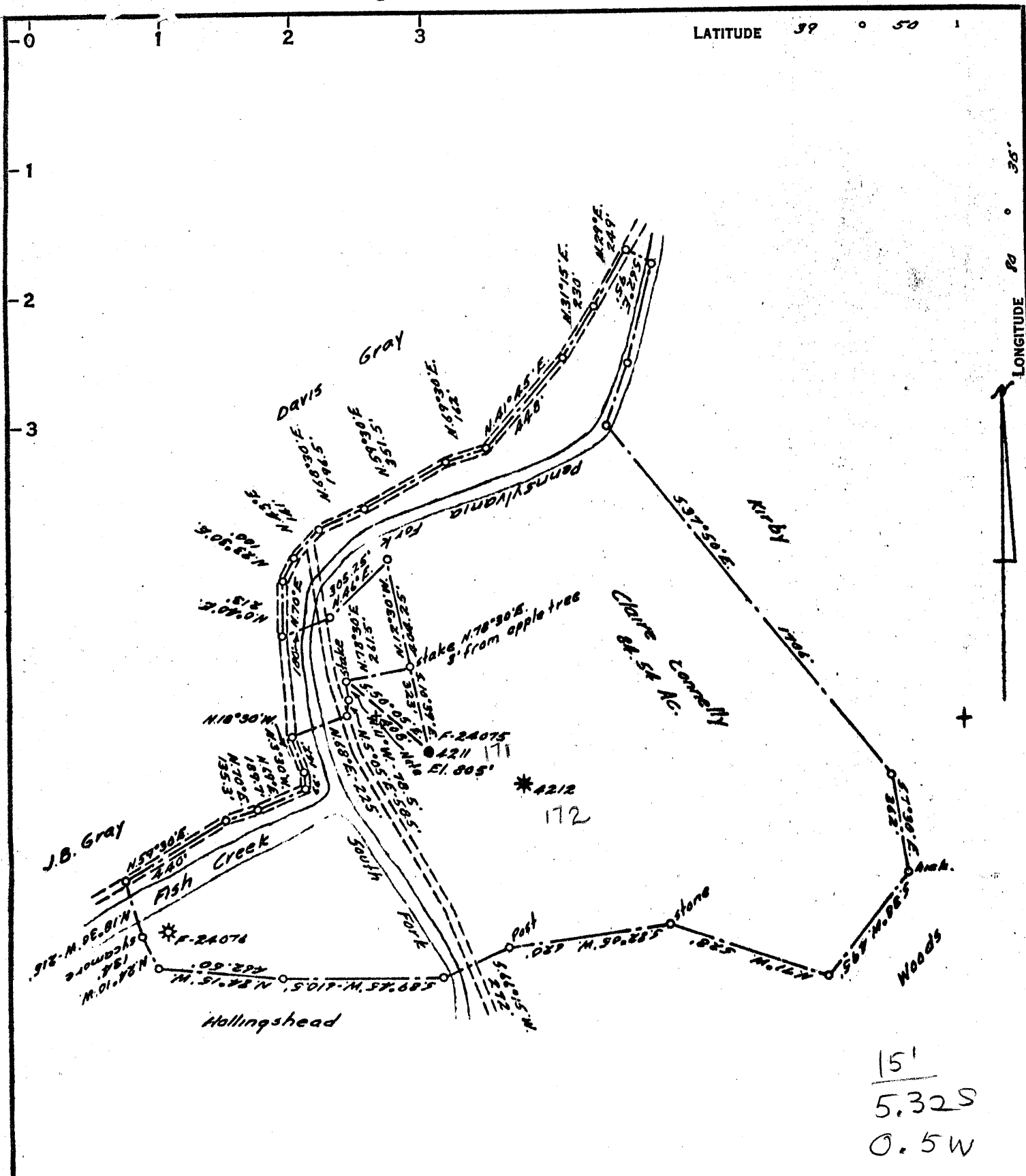
15' Quad _____
(sec.)

7.5' Quad Cameron

District Liberty

WELL LOCATION PLAT

County 051 **Permit** 172
 see plat #171



15'
5,325
0.5W

COAL OWNED BY

~~RECORDATION 1 PARTIAL - 12.10.66~~

NEW LOCATION.....

DRILL DEEPER.....

ABANDONMENT..... - 1-25-71

COMPANY The Manufacturers Light & Heat Co.
 ADDRESS 800 Union Trust Bldg Pgh. Pa.
 FARM Claire Connelly
 TRACT _____ ACRES 85 LEASE No. 26958
 WELL (FARM) No. 1 SERIAL No. 4211
 ELEVATION (SPIRIT LEVEL) 805'
 QUADRANGLE Cameron SC
 COUNTY Marshall DISTRICT Liberty
 ENGINEER W.W. Stegman (Guy B. Patterson)
 ENGINEER'S REGISTRATION No. 39A
 FILE No. _____ DRAWING No. Y-15-176
 DATE 4 March 1955 SCALE 1"=500'

STATE OF WEST VIRGINIA
 DEPARTMENT OF MINES
 OIL AND GAS DIVISION
 CHARLESTON

WELL LOCATION MAP

FILE No. Mars-171-Partial
 (Storage)
 - 172

+ DENOTES LOCATION OF WELL ON UNITED STATES TOPOGRAPHIC MAPS, SCALE 1 TO 62,500, LATITUDE AND LONGITUDE LINES BEING REPRESENTED BY BORDER LINES AS SHOWN.

- DENOTES ONE INCH SPACES ON BORDER LINE OF ORIGINAL TRACING.

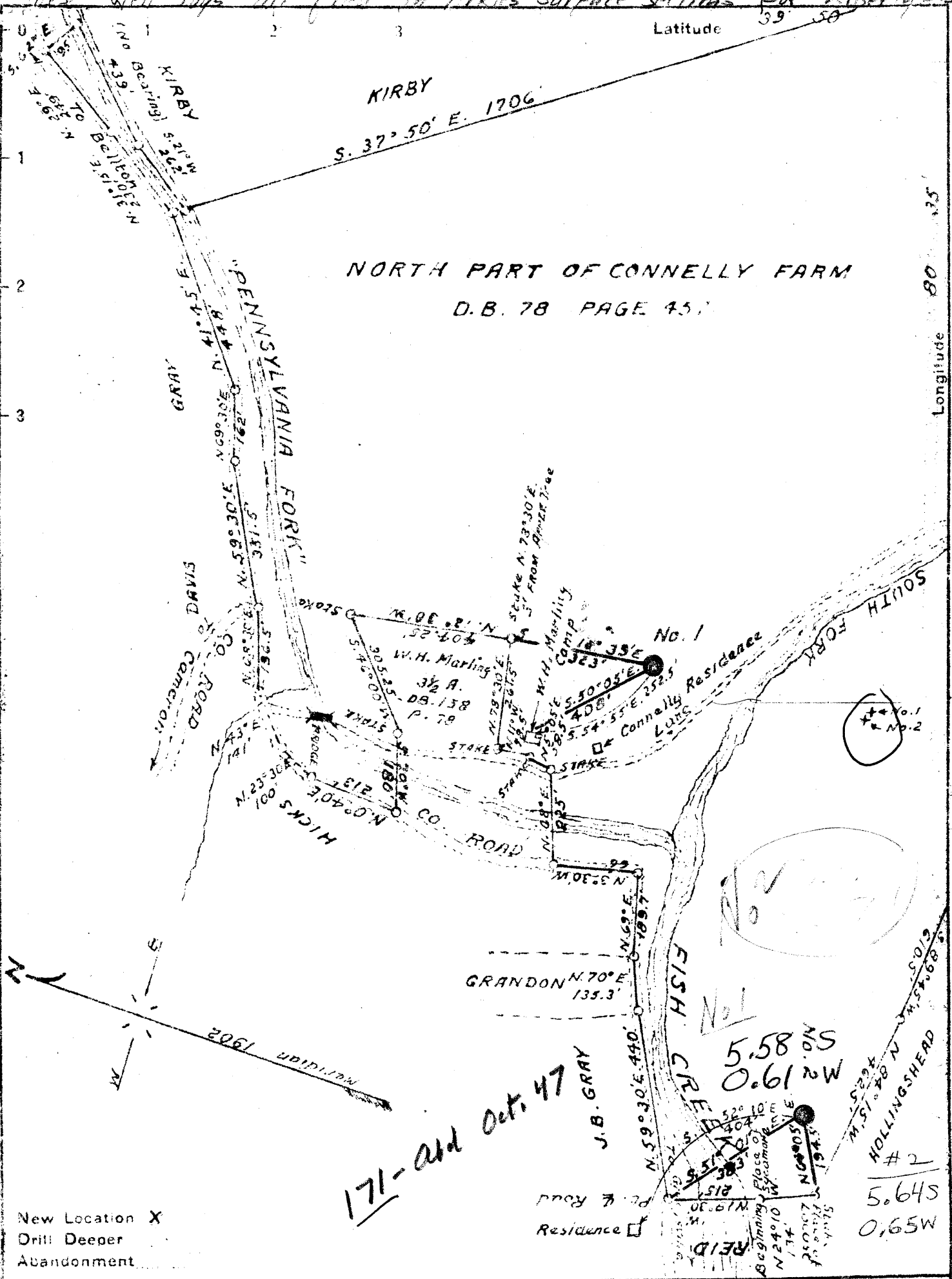
These well logs are filed in KIRBY'S SURFACE SECTION Box Liberty District

Latitude 39° 50'

Longitude 80° 35'

KIRBY
S. 37° 50' E. 1706'

NORTH PART OF CONNELLY FARM
D.B. 78 PAGE 45



171-Add Oct. 47

New Location X
Drill Deeper
Abandonment

Company GUY B. & A. G. PATTERSON.
 Address CAMERON, W. VA. P.O. BOX 43
 Farm CLAIRE CONNELLY
 Tract 1 Acres 84.54 Lease No. _____
 Well (Farm) No. 1 & 2 Serial No. _____
 Elevation (Spirit Level) No. 1 - 799', No. 2 - 795'
 Quadrangle CAMERON
 County MARSHALL District LIBERTY
 Engineer GORDON W. SAMMONS
 Engineer's Registration No. 509
 File No. _____ Drawing No. _____
 Date SEPT. -5-1946 Scale 1 INCH = 300'

STATE OF WEST VIRGINIA
DEPARTMENT OF MINES
OIL AND GAS DIVISION
CHARLESTON

WELL LOCATION MAP
FILE NO. MARS-171-#1
MARS-172-#2

+ Denotes location of well on United States Topographic Maps, scale 1 to 62,500, latitude and longitude lines being represented by border lines as shown.

- Denotes one inch spaces on border line of original tracing.