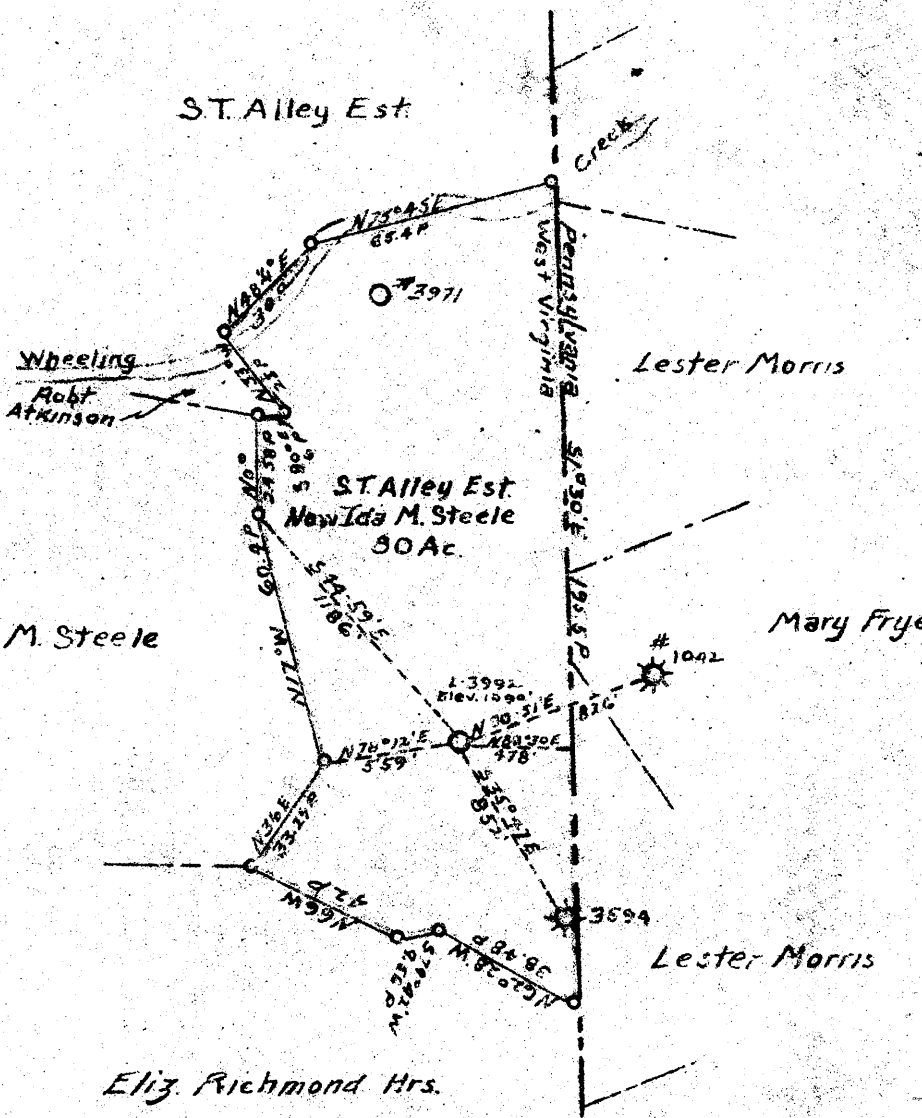


39° 57' 30"

LATITUDE

LONGITUDE 80 30



15'
3.04S
1.10W

E-307
W-112

REAL OWNED BY Mrs Sally Huston Rowe, et al
 * 1/4 Pgh. Steel Co. Grant Bldg. Pgh. Pa.
Miss Evelyn Thompson et al
Uniontown Pa

NEW LOCATION...
 DRILL DEEPER...
 ABANDONMENT...

COMPANY The Manufacturers Light and Heat Co
 ADDRESS 800 Union Trust Building, Pittsburgh Pa
 FARM Ida M. Steele
 TRACT ACRES 80 LEASE NO. 19407
 WELL (FARM) NO. 9 SERIAL NO. 3992
 ELEVATION (SPIRIT LEVEL) 1090'
 QUADRANGLE Cameron
 COUNTY Marshall DISTRICT Webster
 ENGINEER _____
 ENGINEER'S REGISTRATION NO. _____
 FILE NO _____ DRAWING NO. Y-13-82
 DATE August 6, 1948 SCALE 1" = 800'

STATE OF WEST VIRGINIA
 DEPARTMENT OF MINES
 OIL AND GAS DIVISION
 CHARLESTON

WELL LOCATION MAP
 FILE NO. MARS-188

+ DENOTES LOCATION OF WELL ON UNITED STATES TOPOGRAPHIC MAPS. SCALE 1 TO 62,500. LATITUDE AND LONGITUDE LINES BEING REPRESENTED BY BORDER LINES AS SHOWN.
 — DENOTES ONE INCH SPACES ON BORDER LINE OF ORIGINAL TRACING.

WEST VIRGINIA DEPARTMENT OF MINES
OIL & GAS DIVISION
W E L L R E C O R D

Permit No. Mars 188

Gas Well
CASING & TUBING

Cameron Quad.

Company

The Manf. Light & Heat Co.

Address

10 634 634

Farm

Ida M. Steele Acres 80

9 1/2 1232 1232

Well No.

3992 Elev. 1090

6 5/8 1728 1728

District

Webster Marshall County

4 2583

Commenced

Sept. 4, 1948

Completed

Oct. 14, 1948

Anchor Packer

Water

150' 1/2 blr.

Size 6 5/8 x 4

Volume

14/10 W 2" 117,302;50' Sand

Depth 2255

10-15-48

Rock Pressure

325# 48 hr.

Clay	0	80	Slate & Shells	1910	1985
Red Rock	80	87	Sand	1985	2010
Lime	87	94	Slate & Shells	2010	2017
Putty	94	100	Sand	2017	2035
Lime	100	113	Slate & Shells	2035	2240
Coal	113	116	Sand H	2240	2263
Slate	116	153	Slate & Shells	2263	2355
Lime	153	160	Red Rock	2355	2380
Slate	160	171	Sand Shell	2380	2384
Lime	171	180	Slate & Shells	2384	2447
Slate	180	193	Sand 50 foot	2447	2458
Lime	193	215	Slate & Shells	2458	2512
Slate	215	225	Lime	2512	2518
Lime	225	285	Slate & Shells	2518	2557
Slate	285	314	Total depth	SLM	2557
Lime	314	332			
Slate	332	340	SLM at 597' ; 1230'		
Lime	340	348	Small show of gas 1135' and 1160'		
Slate	348	353	Test 2/10 W 3/8"		
Lime	358	386	8" pipe run at 1217' 6" SLM		
Slate	386	425	6 5/8" pipe run 1718' SLM		
Lime	425	568	Break in Injun 1806'		
Slate	568	591	Gas 2449' to 2453' 64/10 in 2" 250,865		
Fitts. Coal	591	597			
Lime	597	604	Tubing record (Thds. off)		
Slate	604	628	Perf. 23' 1		
Shells	628	695	Tubing 3 jts. 74' 9		
Red Rock	695	705	Perf. 24' 10		
Lime	705	715	Tubing 8 jts. 179' 8		
Red Rock	715	718	Anchor 302' 4		
Slate	718	778	6 5/8 x 4 Packer		
Lime	778	793	Tubing 82 jts. 1260' 6"		
Slate & Shells	793	855	Add for threads 21' 0"		
Red Rock	855	875	Total 2583' 10"		
Slate & Shells	875	923	Open flow after tubing 14/10 W 2" 117,302		
Gritty Lime	923	930	Minute test in 4" tubing		
Slate	930	935			
Lime	935	970	1 2 3 4 5 6 7 8 9 10		
Slate	970	982	10 20 25 35 40 47 55 60 67 75		
Lime	982	995			
Slate & Shells	995	1050	15 30 45 60 24 48		
1st Cow Run Sand	1050	1065	105 175 225 250 322 325		
Slate	1065	1106			
2nd Cow Run Sand	1106	1180			
Slate & Shells	1180	1194			
Lime Gritty	1194	1223			
Slate	1223	1245			
Sand	1245	1325			
Slate & Shells	1325	1465			
Lime Gritty	1465	1516			
Salt Sand	1516	1590			
Slate	1590	1620			
Lime	1620	1640			
Slate	1640	1685			
Sand	1685	1694			
Slate	1694	1702			
Big Injun Sand	1702	1910			

1702
1090

612 01