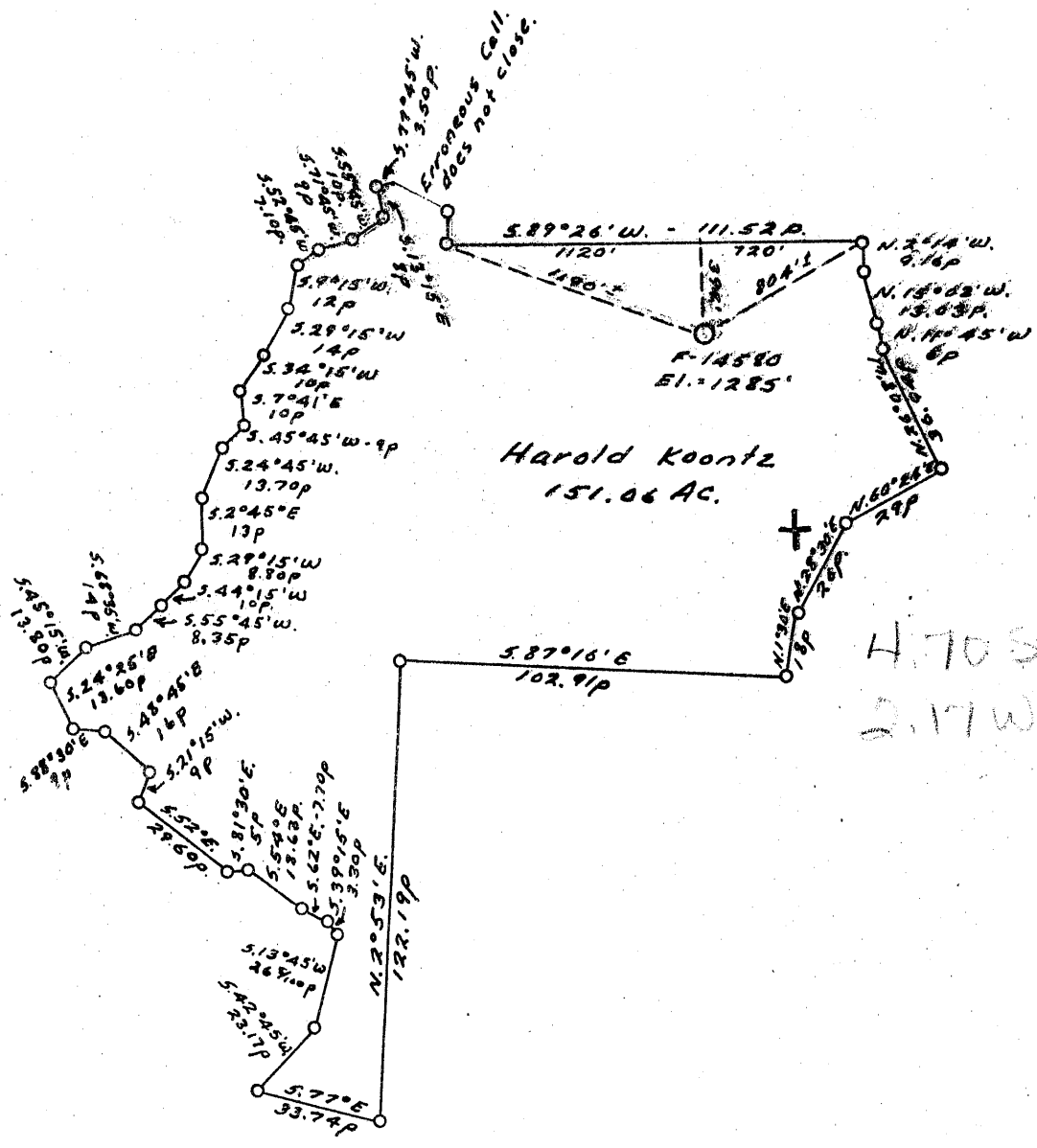


39°57'30"

LATITUDE 40 00

LONGITUDE 80 30

80°32'30"



Harold Koontz
151.06 Ac.

4.70 S ✓
2.17 W

198s
0w

COAL OWNED BY _____
 STORAGE
 NEW LOCATION...
 DRILL DEEPER...
 ABANDONMENT...

COMPANY The Manufacturers Light & Heat
 ADDRESS 800 Union Trust Bldg. Pgh. Pa.
 FARM Harold Koontz (C.W. Phillips)
 TRACT _____ ACRES 180 LEASE NO. 18408
 WELL (FARM) NO. 2 SERIAL NO. F-14580
 ELEVATION (SPIRIT LEVEL) 1285'
 QUADRANGLE Cameron
 COUNTY Marshall DISTRICT Webster
 ENGINEER A.C. Streater J.M.
 ENGINEER'S REGISTRATION NO. 9422
 FILE NO. _____ DRAWING NO. 443-923
 DATE Dec. 15, 1953 SCALE: 1" = 800'

STATE OF WEST VIRGINIA
 DEPARTMENT OF MINES
 OIL AND GAS DIVISION
 CHARLESTON

WELL LOCATION MAP

FILE NO. MARS-252

+ DENOTES LOCATION OF WELL ON UNITED STATES TOPOGRAPHIC MAPS, SCALE 1 TO 62,500. LATITUDE AND LONGITUDE LINES BEING REPRESENTED BY BORDER LINES AS SHOWN.
 - DENOTES ONE INCH SPACES ON BORDER LINE OF ORIGINAL TRACING.



STATE OF WEST VIRGINIA
DEPARTMENT OF MINES
OIL AND GAS DIVISION

Cameron

WELL RECORD

Oil or Gas Well Stor.
(KIND)

Permit No. MARS-252-R

Company The Manufacturers Light and Heat Company
Address 800 Union Trust Building, Pgh., Penna.
Farm Harold Koontz Acres 160
Location (waters)
Well No. 2-4286 Elev. 1285'
District Webster County Marshall
The surface of tract is owned in fee by
Address
Mineral rights are owned by
Address
Drilling commenced October 1, 1953
Drilling completed September 17, 1954
Date Shot From To
With
Open Flow 3/4 /10ths Water in 2" Inch
 /10ths Merc. in Inch
Volume 182,844 Cu. Ft.
Rock Pressure 735 lbs. 24 hrs.
Oil bbls., 1st 24 hrs.
Fresh water feet feet
Salt water feet feet

Casing and Tubing	Used in Drilling	Left in Well	Packers
Size			
16			Kind of Packer
13	162'	162'	
10	579'	579'	Size of
8 1/4	1034'	1034'	
6 5/8			Depth set
5 3/16			
run 4	1874'	1874'	Perf. top
2			Perf. bottom
Liners Used			Perf. top
			Perf. bottom

CASING CEMENTED SIZE No. Ft. Date
COAL WAS ENCOUNTERED AT 744 FEET INCHES
 FEET INCHES FEET INCHES
 FEET INCHES FEET INCHES

Formation	Color	Hard or Soft	Top	Bottom	Oil, Gas or Water	Depth Found	Remarks
✓ Pittsburgh Coal			744	750	13" casing cemented in with 120 bag cem.		
✓ 1st Gas Sand			1362	1430	10" casing cemented in with 210 bag cem.		
✓ 1st Salt Sand			1487	1553	Cement Run between 8" and 4"		
✓ 3rd Salt Sand			1628	1723	Run 579' of new 10" casing and screwed on		
✓ Maxon Sand			1758	1805	old 10" in hold. Bottom of old 10"		
✓ Big Lime			1832	1845	746'. Run 1034' of 8 1/4" and set on top		
✓ Big Injun			1845		of old 8 1/4" casing in hold. Could not		
Total Depth				1938	screw on. Bottom of old 8 1/4" 1406'		
				(ETS)	1832		
					1285		
					547		

