

COAL OWNED BY Consolidation Coal Co.-O.V. Div.

NEW LOCATION

DRILL DEEPER

ABANDONMENT

*issued July 27, 1970*

COMPANY THE MANUFACTURERS LIGHT & HEAT CO.

ADDRESS 800 UNION TRUST BLDG., PGH., PA.

FARM ANDREW STEIN

TRACT ACRES 130 LEASE No. 26587

WELL (FARM) No.                      SERIAL No. 4320

ELEVATION (SPIRIT LEVEL) 1371.65'

QUADRANGLE LITTLETON NW

COUNTY MARSHALL DISTRICT MEADE

ENGINEER G. ANTILL *Robert M. Hall*

ENGINEER'S REGISTRATION No. 361-E

FILE No.                      DRAWING No. Y-15-297

DATE AUG. 26, 1955 SCALE 1" = 800'

STATE OF WEST VIRGINIA  
DEPARTMENT OF MINES  
OIL AND GAS DIVISION  
CHARLESTON

**WELL LOCATION MAP**

FILE No. MARS-287-P

+ DENOTES LOCATION OF WELL ON UNITED STATES TOPOGRAPHIC MAPS. SCALE 1 TO 62,500. LATITUDE AND LONGITUDE LINES BEING REPRESENTED BY BORDER LINES AS SHOWN.

- DENOTES ONE INCH SPACES ON BORDER LINE OF ORIGINAL TRACING.

80° 42' 30"

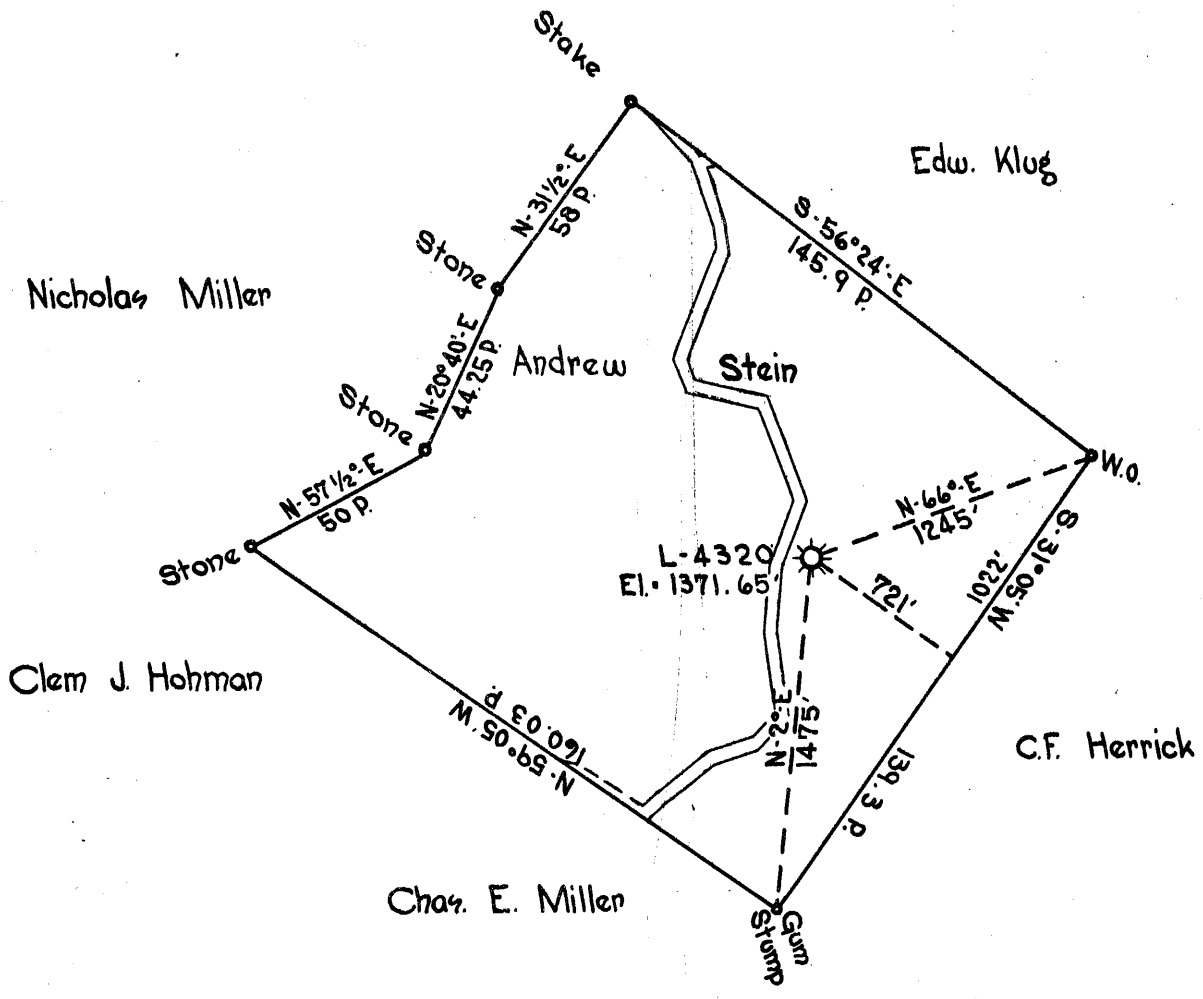
0 1 2 3 LATITUDE 39° 45'

-1

-2

-3

LONGITUDE 80° 40'



COAL OWNED BY \_\_\_\_\_

NEW LOCATION...   
 DRILL DEEPER...   
 ABANDONMENT...

COMPANY THE MANUFACTURERS LIGHT & HEAT CO.  
 ADDRESS 800 UNION TRUST BLDG., PGH., PA.  
 FARM ANDREW STEIN  
 TRACT \_\_\_\_\_ ACRES 130 LEASE No. 28587  
 WELL (FARM) No. \_\_\_\_\_ SERIAL No. 4320  
 ELEVATION (SPIRIT LEVEL) 1371.65'  
 QUADRANGLE LITTLETON  
 COUNTY MARSHALL DISTRICT MEADE  
 ENGINEER G. ANTILL *Robert M. Heull*  
 ENGINEER'S REGISTRATION No. 361-E  
 FILE No. \_\_\_\_\_ DRAWING No. Y-13-287  
 DATE AUG. 26, 1955 SCALE 1" = 800'

STATE OF WEST VIRGINIA  
 DEPARTMENT OF MINES  
 OIL AND GAS DIVISION  
 CHARLESTON

**WELL LOCATION MAP**

FILE No. MARS-287

+ DENOTES LOCATION OF WELL ON UNITED STATES TOPOGRAPHIC MAPS, SCALE 1 TO 62,500. LATITUDE AND LONGITUDE LINES BEING REPRESENTED BY BORDER LINES AS SHOWN.  
 - DENOTES ONE INCH SPACES ON BORDER LINE OF ORIGINAL TRACING.



STATE OF WEST VIRGINIA  
DEPARTMENT OF MINES  
OIL AND GAS DIVISION 8

Quadrangle Littleton

WELL RECORD

Permit No. MARS-287

Oil or Gas Well Gas  
(KIND)

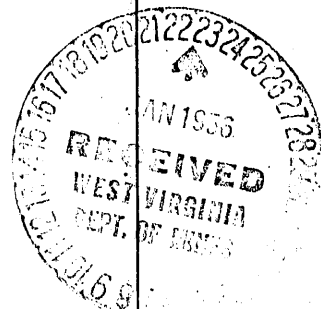
Company THE MANUFACTURERS LIGHT & HEAT COMPANY  
Address 800 Union Trust Building, Pgh. 19, Pa.  
Farm Andrew Stein Acres 130  
Location (waters) \_\_\_\_\_  
Well No. 4320 Elev. 1371.65'  
District Meade County Marshall  
The surface of tract is owned in fee by \_\_\_\_\_  
Address \_\_\_\_\_  
Mineral rights are owned by \_\_\_\_\_  
Address \_\_\_\_\_  
Drilling commenced October 27, 1955  
Drilling completed December 16, 1955  
Date Shot \_\_\_\_\_ From \_\_\_\_\_ To \_\_\_\_\_  
With \_\_\_\_\_  
Open Flow /10ths Water in \_\_\_\_\_ Inch  
0/10ths Merc. in 3/8 Inch  
Volume 0.000 Cu. Ft.  
Rock Pressure \_\_\_\_\_ lbs. \_\_\_\_\_ hrs.  
Oil \_\_\_\_\_ bbls., 1st 24 hrs.  
Fresh water \_\_\_\_\_ feet \_\_\_\_\_ feet  
Salt water \_\_\_\_\_ feet \_\_\_\_\_ feet

Casing and Tubing	Used in Drilling	Left in Well	Packers
Size			Kind of Packer
16			
13			
10		490' 11"	Size of
8 1/4		1633' 5"	
6 1/2			Depth set
5 3/16		2172' 5"	
3			Perf. top
2			Perf. bottom
Liners Used			Perf. top
			Perf. bottom

CASING CEMENTED SIZE No. Ft. Date

COAL WAS ENCOUNTERED AT FEET INCHES  
FEET INCHES FEET INCHES  
FEET INCHES FEET INCHES

Formation	Color	Hard or Soft	Top	Bottom	Oil, Gas or Water	Depth Found	Remarks
Clay			0	8	Schlumberger	Measurement	
Sand Stone			8	15			
Slate			15	35	10 3/4" Casing point	487'	
Sand Shell			35	39	Cemented with 175 bags cement and 1 bag Gel.		
Slate			39	54	Good return to surface		
Lime			54	65			
Slate			65	75	8 5/8" Casing point	1618'	
Sand			75	80	Cemented with 361 bags cement and 2 bags Gel.		
Slate			80	95	Good return to surface		
Red Rock			95	100			
Slate			100	116	5 1/2" Casing point	2155'	
Red Rock			116	122	cemented with 330 bags cement and 1 bag Gel.		
Slate			122	135	Good return to surface.		
Lime (Gritty)			135	142			
Slate			142	173	5 1/2" Casing perforated as follows.		
Lime			173	185	72 shots from 2136' to 2172'		
Slate & Red Rock			185	200	16 shots from 2132' to 2136'		
Lime			200	206	8 shots from 2168' to 2170'		
Slate			206	215			
Lime (Hard)			215	222	5 1/2 x 8 5/8" Centrizers set at following depths from bottom of casing.		
Slate			222	226			
Lime			226	228	1 - 38'		
Slate			228	237	2 - 155'		
Show of Coal				237	3 - 626'		
Slate			237	255	4 - 1500'		
Lime			255	265	5 - 1800'		
Slate			265	272	6 - 2000'		
Red Rock			272	280	7 - 2145'		
Sand			280	285			
Slate			285	298			
Red Rock			298	308			
Slate and Lime Sheels			308	318			
Red Rock			318	329			
Slate			329	336			
Sand			336	347			



(Over)

Formation	Color	Hard or Soft	Top $\delta$	Bottom	Oil, Gas or Water	Depth Found	Remarks
Slate			347	354			
Lime			354	361			
Red Rock			361	365			
Lime			365	380			
Slate			380	385			
Red Rock			385	390			
Slate and Red Rock			390	400			
Lime			400	418			
Slate			418	425			
Red Rock			425	438			
Slate			438	445			
Lime			445	455			
Slate			455	470			
Lime			470	488			
Lime and Slate			488	495			
Red Rock			495	502			
Lime (Gritty)			502	532			
Slate			532	570			
Red Rock			570	574			
Lime			574	580			
Slate			580	585			
Lime			585	596			
Slate			596	613			
Lime			613	633			
Slate			633	657			
Sand			657	672			
Slate			672	684			
Lime			684	690			
Black Slate			690	700			
Lime (Gritty)			700	718			
Slate			718	722			
Lime (Gritty)			722	732			
Slate			732	751			
Sand			751	803			
Slate			803	850			
Red Rock			850	870			
Lime			870	885			
Slate			885	905			
Lime			905	940			
Slate			940	946			
Lime			946	950			
Red Rock			950	956			
Lime and Slate			956	963			
Lime			963	1005			
Slate and Shells			1005	1024			
Slate			1024	1031			
Mapletown Coal			1031	1033			
Lime			1033	1070			
Sand			1070	1090			
Slate			1090	1095			
Lime			1095	1105			
Slate			1105	1130			
Phg. Coal			1130	1136			
Slate			1136	1160			
Red Rock			1160	1178			
Lime			1178	1195			
Slate			1195	1205			
Sand			1205	1224			
Slate			1224	1242			
Lime			1242	1247			
Slate and Lime Shells			1247	1268			
Sand			1268	1280			
Slate			1280	1308			
Red Rock			1308	1323			
Lime			1323	1327			
Slate			1327	1336			
Red Rock			1336	1347	Cave		
Slate			1347	1402			
Red Rock			1402	1418	Cave		
Lime			1418	1421			

3 x 26' Bailers of water in 48 hours.

Date \_\_\_\_\_, 19\_\_\_\_

APPROVED \_\_\_\_\_, Owner

By \_\_\_\_\_

(7416)



STATE OF WEST VIRGINIA  
DEPARTMENT OF MINES  
OIL AND GAS DIVISION 8-7

Page #2

Quadrangle \_\_\_\_\_

Permit No. Mar-287

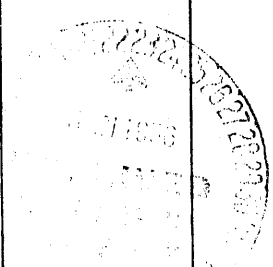
WELL RECORD

Oil or Gas Well \_\_\_\_\_ (KIND)

Company	Casing and Tubing	Used in Drilling	Left in Well	Packers
Address	Size			
Location (waters)	16			Kind of Packer
Well No.	13			
District	County			Size of
The surface of tract is owned in fee by	10			Depth set
Address	8 1/2			
Mineral rights are owned by	6 1/2			Perf. top
Address	5 1/2			Perf. bottom
Drilling commenced	3			Perf. top
Drilling completed	2			Perf. bottom
Date Shot	From	To	Liners Used	Perf. top
With				Perf. bottom
Open flow	10ths Merc. in	Inch	CASING CEMENTED	SIZE
Volume	Cu. Ft.			No. Ft.
Rock Pressure	lbs	hrs	COAL WAS ENCOUNTERED AT	FEET
Oil	bbls	1st 24 hrs		INCHES
Brack water	feet	feet	FEET	INCHES
S&W water	feet	feet	FEET	INCHES

Formation	Color	Hard or Soft	Top	Bottom	Oil, Gas or Water	Depth Found	Remarks
Red Rock			1421	1435	Cave		
Lime			1435	1443			
Slate			1443	1466			
Black Slate			1466	1472			
Lime			1472	1478			
Slate			1478	1490			
Red Rock			1490	1522			
Slate			1522	1529			
✓ Lime or Little Dunkard			1529	1554			
Slate and Red Rock			1554	1599	Cave		
Lime			1599	1620			
Slate			1620	1647			
✓ Lime (Big Dunkard)			1647	1677			
Slate Break			1677	1682			
Sand (Gas Sand)			1682	1712			
Slate (Black)			1712	1720			
✓ Show of Coal (Freeport)			1715	1716			
✓ Sand (1st Salt)			1720	1734			
Slate			1734	1744			
Sand			1744	1817			
Slate (Black)			1817	1838			
Sand			1838	1852			
Slate			1852	1869			
Lime			1869	1880			
Slate			1880	1913			
✓ Sand			1913	1925			
Slate (Black)			1925	1948			
Sand			1948	1957			
Slate and Sand Shells			1957	1987			
Sand			1987	2036			
Slate			2036	2044			
Sand			2044	2096			
Slate and Sand Shells			2096	2128			
Sand			2128	2139			
Slate			2139	2145			
✓ Maxton Sand (Broken)			2145	2159			
Sand			2159	2168			
Slate			2168	2196			
Lime			2196	2207			

2196  
1372  
824



(Over)

345-7

Formation	Color	Hard or Soft	Top <i>8-7</i>	Bottom	Oil, Gas or Water	Depth Found	Remarks
Filled Back Filled with Total Depth	with Rock cement		2190	2190 2175 2175			

Date January 18, 19 56

APPROVED THE MANUFACTURERS LIGHT & HEAT CO., Owner

By

(SIGNED) T. AMO. AGENT