

LATITUDE

39 45

8035

LONGITUDE

→ OGIS  
75' loc

7'5 OGIS topo location

7.5' loc 1.34S  
0.95S

15' loc 1.34S  
(calc.) 0.95W

Company \_\_\_\_\_

Farm WM Loper (3380)

SECTION NAME \_\_\_\_\_

Quad Littleton + 15'nc

County \_\_\_\_\_

District Liberty

WELL LOCATION MAP

File No. Marshall 23  
Now MARS-309

P 394500

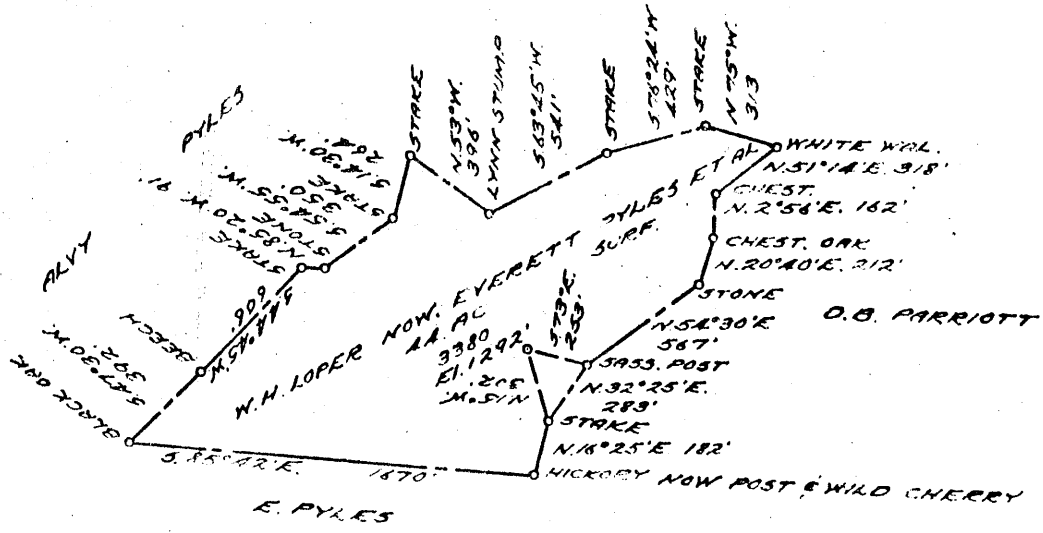
LATITUDE 39 ° 45'

LONGITUDE 80 ° 35'

1.215  
0.950  
+

1.225  
.970

GEO. BUTZARD



COAL OWNED BY REDRILL

NEW LOCATION...

DRILL DEEPER...

ABANDONMENT...

60  
55  
546  
30419  
7000-3  
70100  
70101

COMPANY THE MANUFACTURERS LIGHT HEAT

ADDRESS 800 UNION TRUST BLDG. P6H. PA.

FARM J. WHITLACH (W.H. LOPER)

TRACT \_\_\_\_\_ ACRES AA LEASE NO. 27950

WELL (FARM) NO. 1 SERIAL NO. 3380

ELEVATION (SPIRIT LEVEL) 1292'

QUADRANGLE LITTLETON NC

COUNTY MARSHALL DISTRICT LIBERTY

ENGINEER Thomas E. Virgin M.

ENGINEER'S REGISTRATION NO. 1503

FILE NO. \_\_\_\_\_ DRAWING NO. Y-15-583

DATE 29 APR. 1957 SCALE 1" = 800'

STATE OF WEST VIRGINIA  
DEPARTMENT OF MINES  
OIL AND GAS DIVISION  
CHARLESTON

**WELL LOCATION MAP**

File No. MARS-309-REDRILL

was 23

+ DENOTES LOCATION OF WELL ON UNITED STATES TOPOGRAPHIC MAPS, SCALE 1 TO 62,500, LATITUDE AND LONGITUDE LINES BEING REPRESENTED BY BORDER LINES AS SHOWN.

- DENOTES ONE INCH SPACES ON BORDER LINE OF ORIGINAL TRACING.

9-0 25



STATE OF WEST VIRGINIA  
DEPARTMENT OF MINES  
OIL AND GAS DIVISION

Quadrangle Littleton

WELL RECORD

Permit No. MARS-309-R

Oil or Gas Well GAS Stone  
(KIND)

Company The Manufacturers Light and Heat Company  
Address 800 Union Trust Building, Pgh. 19, Penna.  
Farm Jacob Whitlatch (W.H. Loper) Acres 42  
Location (waters) \_\_\_\_\_  
Well No. 3380 Elev. 1292'  
District Liberty County Marshall  
The surface of tract is owned in fee by \_\_\_\_\_  
Address \_\_\_\_\_  
Mineral rights are owned by \_\_\_\_\_  
Address \_\_\_\_\_  
Drilling commenced March 5, 1957  
Drilling completed August 13, 1958  
Date Shot \_\_\_\_\_ From \_\_\_\_\_ To \_\_\_\_\_  
With \_\_\_\_\_  
Open Flow \_\_\_\_\_ /10ths Water in \_\_\_\_\_ Inch  
\_\_\_\_\_ /10ths Merc. in \_\_\_\_\_ Inch  
Volume \_\_\_\_\_ Cu. Ft.  
Rock Pressure \_\_\_\_\_ lbs. \_\_\_\_\_ hrs.  
Oil \_\_\_\_\_ bbls., 1st 24 hrs.  
Fresh water \_\_\_\_\_ feet \_\_\_\_\_ feet  
Salt water \_\_\_\_\_ feet \_\_\_\_\_ feet

Casing and Tubing	Used in Drilling	Left in Well	Packers
<del>15</del> 20" Pipe Conductor	15	15	Kind of Packer _____
18 "	270	270	Size of _____
10"	1251	1251	Depth set _____
<del>10</del> 7"	1559	1559	Perf. top _____
6 3/8"	2055	2055	Perf. bottom _____
8			Perf. top _____
2			Perf. bottom _____
Liners Used			

CASING CEMENTED \_\_\_\_\_ SIZE \_\_\_\_\_ No. Ft. \_\_\_\_\_ Date \_\_\_\_\_  
COAL WAS ENCOUNTERED AT \_\_\_\_\_ FEET \_\_\_\_\_ INCHES  
\_\_\_\_\_ FEET \_\_\_\_\_ INCHES FEET \_\_\_\_\_ INCHES  
\_\_\_\_\_ FEET \_\_\_\_\_ INCHES FEET \_\_\_\_\_ INCHES

Formation	Color	<del>XXXX</del> THICKNESS	Top	Bottom	Oil, Gas or Water	Depth Found	Remarks
Schlumberger Well Survey					All pipe measured over threads		
✓Pittsburgh Coal		7	1053	1060	Run 270' of 13 3/8" Casing, SM,H.48# on a steel shoe. Run 125 bags cement. No return of circulation at surface. Later this space was filled from the top with 79 bags cement. Run 1251' of 10 3/4" casing, SM,H. 32.75# on a steel shoe. This shoe being set over the top of 238' of original 8 1/4" casing which was left in hole. Run 399' of 7" Pipe P.E. SM,J.20# with a turned down shoe on the bottom joint and a collar on the top joint. This top joint was run through a special 8"x9 1/2" OD. swage nipple, large end up, and welded. A right and left thread nipple and collar and 1160' of 7" casing, SM,J20# was run. Being unable to part the change thread nipple the 7" and 10 3/4" casing was cemented at the same time with 623 bags of cement, 13# per gallon, and 6 bags of aquagel. No return of circulation at surface. Later filled from the top with <del>XXXX</del> 121 bags cement, 16.4# per gal. between the 7" and 10 3/4" and 125 bags cement, 16.4# per gallon, between the 10 3/4" and 13 3/8" casing. Run 2055' of 5 1/2" casing, SM,J.17# on a steel shoe set at 2040'. One 5 1/2" x 8 5/8" casing centralizer was set at 2039'. Cemented with 300 bags cement, 15# per gallon, Good return of cement at the surface. Plugged hole back to final depth of 2100' with 117 bags neat <del>XXXX</del> cement.		
✓Gas Sand		5	1675	1680			
✓Maxton Sand		34	2056	2090			
✓Big Lime			2190				
✓Big Injun Sand				2483			
Total Depth				2100			
5 1/2" Shoe set at				2040			



Liberty District, Marshall County, W. Va.  
 Manufacturers Light & Heat Co., 800 Union Tr. Bldg., Pittsburgh, Pa.  
 On 44 acres.  
 No elevation given.  
 1 1/2" conductor, 16'; 10" casing, 282'; 8 1/2", 1505'; 6-5/8", 2198'  
 No packer.  
 Coal was encountered at 751-756, 954-960, and 1052-1060'.  
 Abandonment reported to Dept. of Mines Aug. 25, 1931.  
 Well was not shot.  
 Salt water at 2176 and 2208'.  
 Dry hole.

	Top.	Bottom.
Clay, yellow, soft	0	15
Lime, white, medium	15	25
Slate, white, soft	25	50
Sand, white, soft	50	80
Slate, white, soft	80	150
Lime, white, hard	150	180
Slate, dark, soft	180	220
Red rock, soft	220	245
Slate, white, soft	245	280
Lime, white, hard	280	300
Slate, white, soft	300	375
Red rock, soft	375	430
Slate, white, soft	430	480
Sand, white, medium	480	510
Slate, white, soft	510	545
Lime, white, hard	545	580
Slate, white, soft	580	630
Lime, white, hard	630	655
Slate, white, soft	655	710
Lime, white, medium	710	730
Bluff Sand, white, soft	730	751
Waynesburg Coal, black, soft	751	756
Slate, white, soft	756	770
Lime, white, hard	770	825
Slate, white, soft	825	875
Lime, white, hard	875	920
Slate, dark, soft	920	930
Lime, white, hard	930	954
Mapletown Coal, black, soft	954	960
Lime, white, hard	960	990
Slate, dark, soft	990	1015
Lime, white, hard	1015	1052
Pittsburgh Coal, black, soft	1052	1060 ←
Slate, dark, soft	1060	1075
Lime, white, hard	1075	1095
Slate, dark, soft	1095	1130
Lime, white, hard	1130	1145
Red rock, soft	1145	1160
Lime, white, hard	1160	1180
Red rock, soft	1180	1195
Sand, white, hard	1195	1215
Red rock, soft	1215	1245
Slate, dark, soft	1245	1260
Murphy Sand, white, hard	1260	1270
Slate, white, soft	1270	1295

	Top.	Bottom.
Red rock, soft	1295	- 1320
Lime, white, hard	1320	- 1332
Red rock, soft	1332	- 1345
Slate, white, soft	1345	- 1362
Red rock, soft	1362	- 1391
Slate, dark, soft	1391	- 1412
Lime, white, hard	1412	- 1418
Slate, white, soft	1418	- 1433
Lime, white, hard	1433	- 1437
Slate, black, soft	1437	- 1454
Red rock, soft	1454	- 1469
Slate, dark, soft	1469	- 1475
Red rock, soft	1475	- 1504
Lime, white, hard	1504	- 1512
Slate, dark, soft	1512	- 1535
Big Darkard Sand, white, hard	1535	- 1560
Slate, dark, soft	1560	- 1600
Slate, white, soft	1600	- 1630
Slate, dark, soft	1630	- 1648
Coal, black, soft	1648	- 1651
Slate, white, medium	1651	- 1672
Gas Sand, white, hard	1672	- 1680
Slate, dark, soft	1680	- 1728
Salt Sand, white, medium	1728	- 1760
Slate, white, soft	1760	- 1770
Lime, dark, hard	1770	- 1791
Slate, dark, soft	1791	- 1840
Lime, dark, hard	1840	- 1857
Slate, dark, soft	1857	- 1960
Lime, white, hard	1960	- 1975
Slate, dark, soft	1975	- 2030
Sand, white, hard	2030	- 2080
Slate, dark, soft	2080	- 2120
Marble Sand, white, hard	2120	- 2179
Pencil Cave, dark, soft	2179	- 2181
Big Lime, white, hard	2181	- 2233
Big Injun Sand, white, hard	2233	- 2503
Slate, dark, soft	2503	- 2705
Sand, white, hard	2705	- 2725
Slate and shells, dark, soft	2725	- 2775
Slate, dark, soft	2775	- 2845
Lime, white, hard	2845	- 2862
Slate and shells, white, medium	2864	- 2900
Slate, dark, soft	2900	- 2952
Pink rock, medium	2952	- 3002
Slate and shells, dark, medium	3002	- 3044
Sand, white, hard	3044	- 3048
Slate, dark, soft	3048	- 3051
50-Pt. Sand, white, hard	3051	- 3055
Slate, dark, soft	3055	- 3078
Gordon Sand, white, hard (oil)	3078	- 3099
Slate, dark, soft	3099	- 3111
Sand, white, hard	3111	- 3120
Slate, dark, soft	3120	- 3128
4th Sand, white, hard	3128	- 3135
Slate, dark, soft	3135	- 3176
5th Sand, white, hard	3176	- 3180
Slate, dark, soft, to bottom	3180	- 3193