

COAL OWNED BY _____
 RECONDITION

NEW LOCATION

DRILL DEEPER Issued

ABANDONMENT 7-13-70

0-25-29

COMPANY THE MANUFACTURERS LIGHT & HEAT

ADDRESS 800 UNION TRUST BLDG. DCN. PA.

FARM BOONER & REYNOLDS

TRACT _____ ACRES 100 LEASE No. 5130

WELL (FARM) No. 3 SERIAL No. 3319

ELEVATION (SPIRIT LEVEL) 1105.41'

QUADRANGLE CAMERON SC

COUNTY MARSHALL DISTRICT LIBERTY

ENGINEER Robert M. Heall

ENGINEER'S REGISTRATION No. 361-E (J.F.)

FILE No. _____ DRAWING No. Y-25-164

DATE 2 MAY, 1960 SCALE 1" = 800'

STATE OF WEST VIRGINIA
 DEPARTMENT OF MINES
 OIL AND GAS DIVISION
 CHARLESTON

WELL LOCATION MAP

FILE No. MARS-385-R-P

+ DENOTES LOCATION OF WELL ON UNITED STATES TOPOGRAPHIC MAPS, SCALE 1 TO 62,500, LATITUDE AND LONGITUDE LINES BEING REPRESENTED BY BORDER LINES AS SHOWN.

- DENOTES ONE INCH SPACES ON BORDER LINE OF ORIGINAL TRACING.

6025

JUL 19 1970

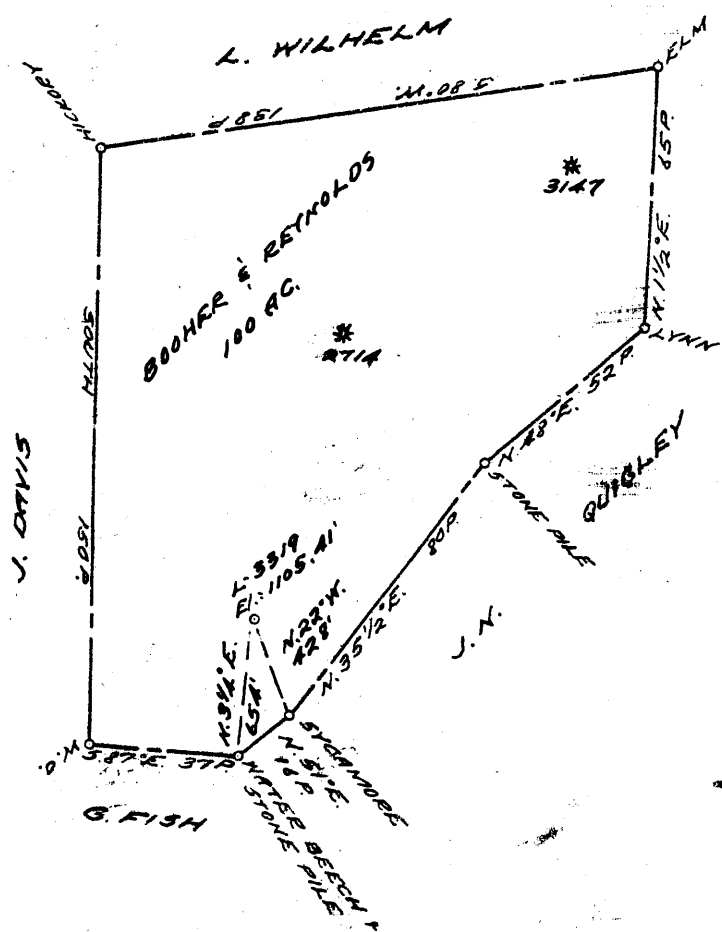
0 1 2 3

LATITUDE 39 0 50

1 2 3

LONGITUDE 80 0 35

3.195
0.31W



COAL OWNED BY _____
 RECONDITION

NEW LOCATION.....

DRILL DEEPER.....

ABANDONMENT.....

0-25-29

COMPANY THE MANUFACTURERS LIGHT & HEAT

ADDRESS 800 UNION TRUST BLDG. PCH. PA.

FARM BOOHER & REYNOLDS

TRACT _____ ACRES 100 LEASE No. 5130

WELL (FARM) No. 3 SERIAL No. 3319

ELEVATION (SPIRIT LEVEL) 1105.41'

QUADRANGLE CAMERON - SC

COUNTY MARSHALL DISTRICT LIBERTY

ENGINEER Robert M. Heill

ENGINEER'S REGISTRATION No. 361-E (J.F.)

FILE No. _____ DRAWING No. Y-25-164

DATE 2 MAY, 1960 SCALE 1" = 800'

STATE OF WEST VIRGINIA
 DEPARTMENT OF MINES
 OIL AND GAS DIVISION
 CHARLESTON

WELL LOCATION MAP

FILE No. MARS-385-R

+ DENOTES LOCATION OF WELL ON UNITED STATES TOPOGRAPHIC MAPS. SCALE 1 TO 62,500. LATITUDE AND LONGITUDE LINES BEING REPRESENTED BY BORDER LINES AS SHOWN.

- DENOTES ONE INCH SPACES ON BORDER LINE OF ORIGINAL TRACING.



STATE OF WEST VIRGINIA
DEPARTMENT OF MINES
OIL AND GAS DIVISION

Quadrangle CAMERON

Permit No. MARS-385-R

WELL RECORD

Oil or Gas Well GAS
(KIND)

Company The Manufacturers Light and Heat Co.
Address 800 Union Trust Building, Pittsburgh 19, Pa.
Farm F. L. Reid Acres 100
Location (waters) _____
Well No. L-3319 Elev. 1105.41'
District Liberty County Marshall
The surface of tract is owned in fee by _____
Address _____
Mineral rights are owned by _____
Address _____
Drilling commenced June 6, 1960
Drilling completed July 23, 1960
Date Shot 7/28/60 From 1860 Big Injun To 2140
With _____

Casing and Tubing	Used in Drilling	Left in Well	Packers
Size			
16			Kind of Packer
18			
10 3/4"	214'	214'	Size of
8 1/2 5/8"	1121'	1121'	
6 1/2 7"	1860'	1860'	Depth set
5 3/16			
3			Perf. top
2			Perf. bottom
Liners Used			Perf. top
			Perf. bottom

Open Flow /10ths Water in Inch
/10ths Merc. in Inch
Volume - Cu. Ft.
Rock Pressure - lbs. - hrs.
Oil - bbls., 1st 24 hrs.
Fresh water - feet
Salt water - feet

CASING CEMENTED SIZE No. Ft. Date

COAL WAS ENCOUNTERED AT 732 FEET INCHES
FEET INCHES FEET INCHES
FEET INCHES FEET INCHES

Formation	Color	Hard or Soft	Top	Bottom	Oil, Gas or Water	Depth Found	Remarks
		THICKNESS					
✓ Pittsburgh Coal		8	732	740			
✓ Big Dunkard Sand		53	1207	1260			
✓ Lower Maxton Sand		29	1795	1824			
✓ Big Lime			1850				
✓ Big Injun Sand				2152		1850	
						1105	
						745	
Set 7" Casing at Plug Back to				1860			
				2140			

