

COAL OWNED BY _____

NEW LOCATION _____

DRILL DEEPER _____

ABANDONMENT *issued 8-28-70*

COMPANY THE MANUFACTURERS LIGHT & HEAT

ADDRESS 800 UNION TRUST BLDG, PCH. PA.

FARM (W. H. WILSON) MARVIN & FAIR, et al

TRACT _____ ACRES 22.54 LEASE NO. 31243

WELL (FARM) No. 1 SERIAL No. 1657

ELEVATION (SPIRIT LEVEL) 1283.96'

QUADRANGLE CAMERON 50

COUNTY MARSHALL DISTRICT LIBERTY

ENGINEER Robert McHail 545 (N.E.)

ENGINEER'S REGISTRATION No. 381-E

FILE No. _____ DRAWING No. Y-25-453

DATE 2 NOV. 61 SCALE 1" = 400'

STATE OF WEST VIRGINIA
DEPARTMENT OF MINES
OIL AND GAS DIVISION
CHARLESTON

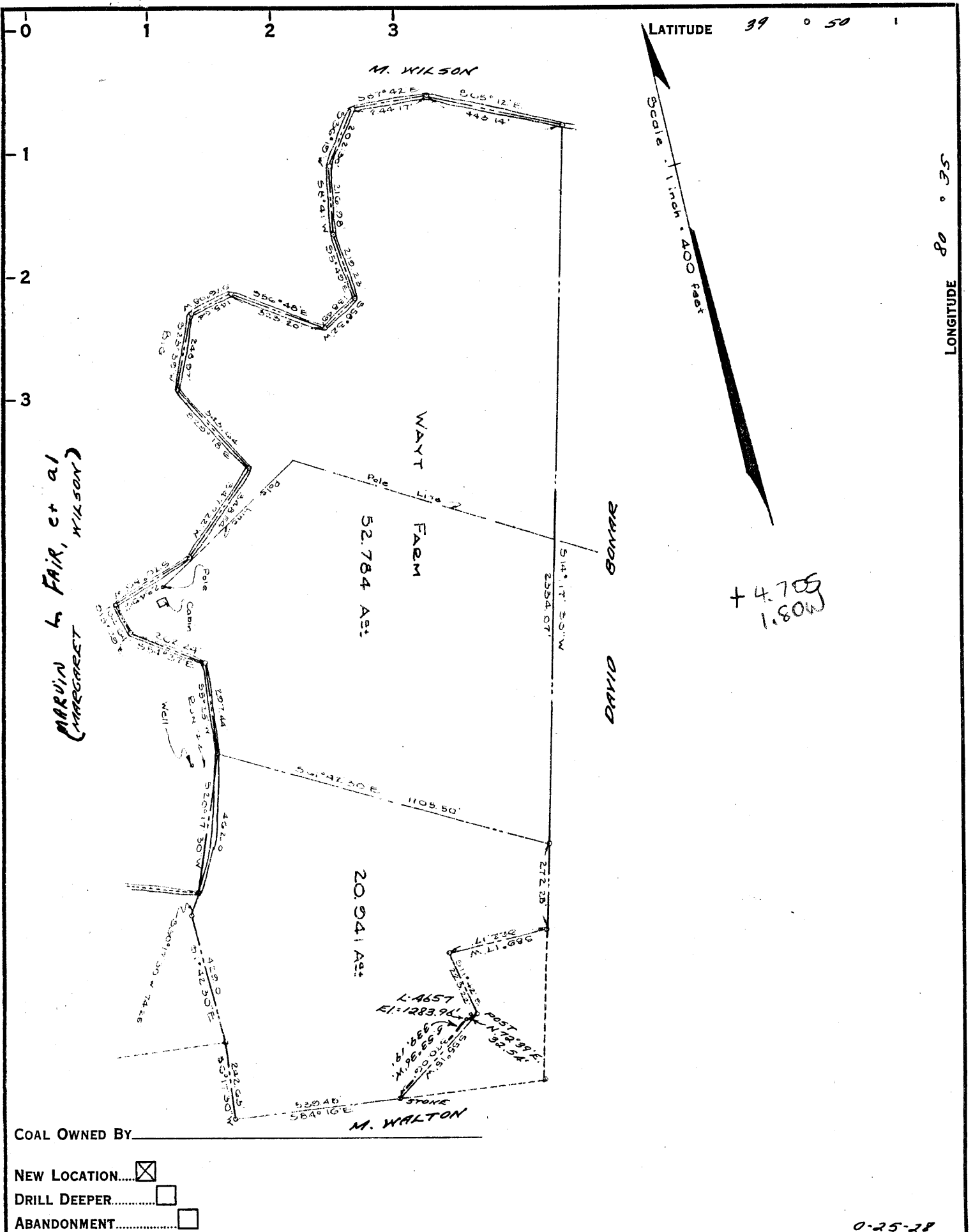
WELL LOCATION MAP

FILE No. MARS-431-P

+ DENOTES LOCATION OF WELL ON UNITED STATES TOPOGRAPHIC MAPS, SCALE 1 TO 62,500. LATITUDE AND LONGITUDE LINES BEING REPRESENTED BY BORDER LINES AS SHOWN.

- DENOTES ONE INCH SPACES ON BORDER LINE OF ORIGINAL TRACING.

NO. 100 IMPERIAL A. & B. SMITH CO., PCH., PA. PR 3642-857



COMPANY THE MANUFACTURERS LIGHT & HEAT

ADDRESS 800 UNION TRUST BLDG., PGH., PA.

FARM (M. H. WILSON) MARVIN L. FAIR, et al

TRACT _____ ACRES 22.54 LEASE No. 31243

WELL (FARM) No. 1 SERIAL No. A657

ELEVATION (SPIRIT LEVEL) 1283.96'

QUADRANGLE CAMERON SC

COUNTY MARSHALL DISTRICT LIBERTY

ENGINEER Robert M. Hill 545 (N.F.)

ENGINEER'S REGISTRATION No. 361-E

FILE No. _____ DRAWING No. Y-25-453

DATE 2 NOV. 61 SCALE 1" = 400'

STATE OF WEST VIRGINIA
DEPARTMENT OF MINES
OIL AND GAS DIVISION
CHARLESTON

WELL LOCATION MAP

FILE No. MARS-431

+ DENOTES LOCATION OF WELL ON UNITED STATES TOPOGRAPHIC MAPS. SCALE 1 TO 62,500. LATITUDE AND LONGITUDE LINES BEING REPRESENTED BY BORDER LINES AS SHOWN.

— DENOTES ONE INCH SPACES ON BORDER LINE OF ORIGINAL TRACING.