

CHRISTINA KELLEY
 SO
JOHN J. GOFF
 189 ACRES
 O.B. 223 P. 367

MINIMUM ERROR OF CLOSURE 1: 2000
 SOURCE OF ELEVATION B.M. (693) AT EAST END OF BRIDGE AT
MEIGHEN PER GLEN EASTON QUADRANGLE

New Location
 Drill Deeper
 Abandonment

"I, THE UNDERSIGNED, HEREBY CERTIFY THAT THIS MAP IS CORRECT TO THE BEST OF MY KNOWLEDGE AND BELIEF AND SHOWS ALL THE INFORMATION REQUIRED BY PARAGRAPH 6 OF THE RULES AND REGULATIONS OF THE OIL AND GAS SECTION OF THE MINING LAWS OF WEST VIRGINIA."

Company PALISADE PETROLEUM CO.
 Address 217 ROOSEVELT BLDG., LOS ANGELES - CALIF.
 Farm JOHN J. GOFF
 Tract _____ Acres 189 Lease No. _____
 Well (Farm) No. ① Serial No. _____
 Elevation (Spirit Level) 739.80
 Quadrangle GLEN EASTON CAMERON QUAD - SW
 County MARSHALL District MEADE
 Engineer Gordon W. Sammons
 Engineer's Registration No. 309
 File No. _____ Drawing _____
 Date Nov-24-1965 Scale 1 IN. = 300 FT.

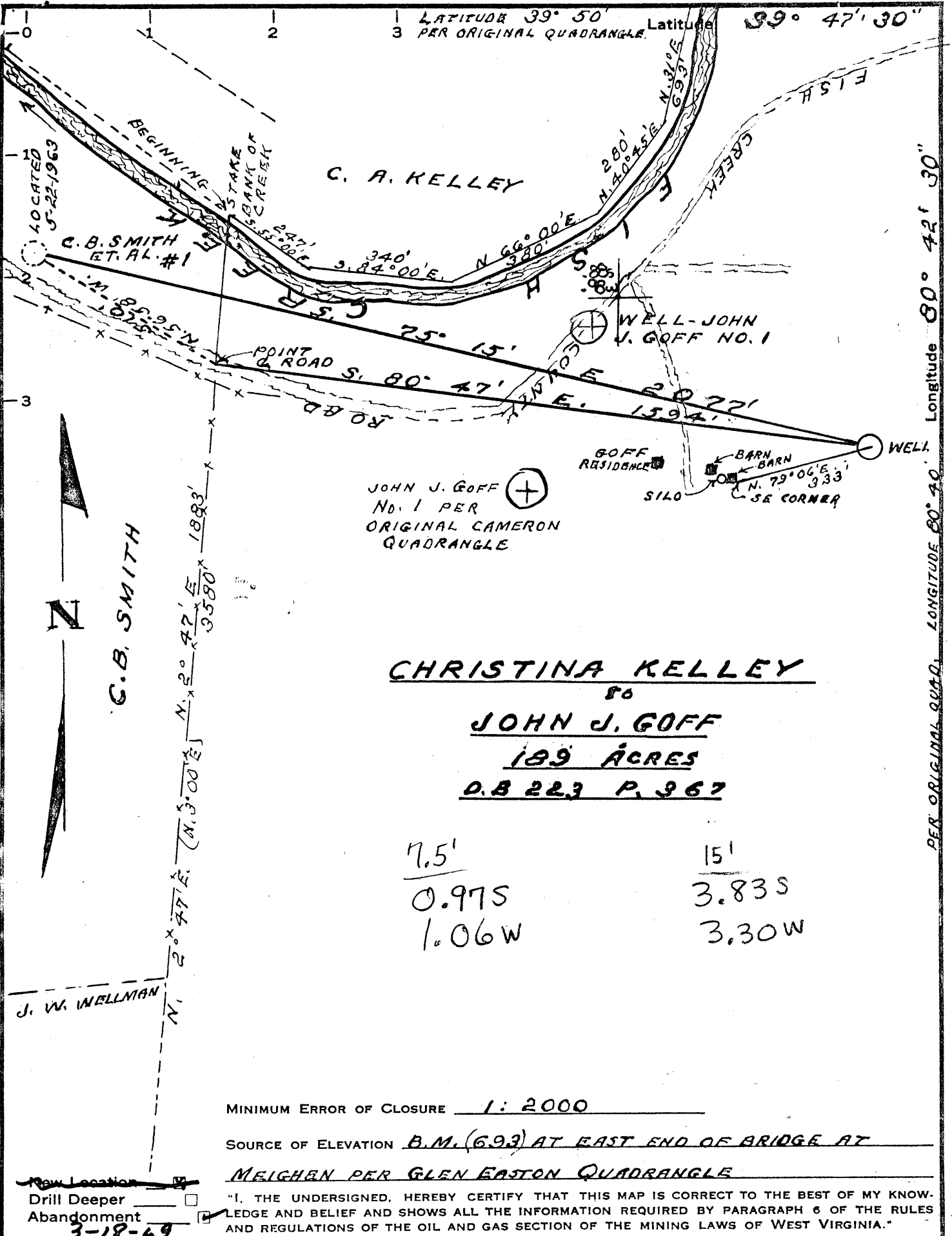
STATE OF WEST VIRGINIA
 DEPARTMENT OF MINES
 OIL AND GAS DIVISION
 CHARLESTON

WELL LOCATION MAP
 FILE NO. MARS-530

+ Denotes location of well on United States Topographic Maps, scale 1 to 62,500, latitude and longitude lines being represented by border lines as shown.

- Denotes one inch spaces on border lines of original tracing.

39 47' 30"



CHRISTINA KELLEY
 80
JOHN J. GOFF
 189 ACRES
 D.B 223 P. 362

7.5'	15'
0.975	3.835
1.06W	3.30W

MINIMUM ERROR OF CLOSURE 1: 2000
 SOURCE OF ELEVATION B.M. (693) AT EAST END OF BRIDGE AT MEIGHAN PER GLEN EASTON QUADRANGLE

Drill Deeper Abandonment 3-18-69
 "I, THE UNDERSIGNED, HEREBY CERTIFY THAT THIS MAP IS CORRECT TO THE BEST OF MY KNOWLEDGE AND BELIEF AND SHOWS ALL THE INFORMATION REQUIRED BY PARAGRAPH 6 OF THE RULES AND REGULATIONS OF THE OIL AND GAS SECTION OF THE MINING LAWS OF WEST VIRGINIA."

Company DRILLED OIL PRODUCTION FACILITATE PETROLEUM CO.
 Address 217 ROOSEVELT BLDG., LOS ANGELES - CALIF.
 Farm JOHN J. GOFF
 Tract _____ Acres 189 Lease No. _____
 Well (Farm) No. 1 Serial No. _____
 Elevation (Spirit Level) 239.80
 Quadrangle GLEN EASTON CAMERON QUAD
 County MARSHALL District MEADE
 Engineer GORDON W. SAMMONS
 Engineer's Registration No. 509
 File No. _____ Drawing No. _____
 Date Nov. 24, 1965 Scale 1 IN. = 300 FT.

STATE OF WEST VIRGINIA
 DEPARTMENT OF MINES
 OIL AND GAS DIVISION
 CHARLESTON

WELL LOCATION MAP
 FILE NO. MARS-530-P

+ Denotes location of well on United States Topographic Maps, scale 1 to 62,500, latitude and longitude lines being represented by border lines as shown.

— Denotes one inch spaces on border line of original tracing.

Longitude 80° 42' 30" Longitude 80° 40' PER ORIGINAL QUAD.

Formation	Color	Hard or Soft	Top	Bottom	Oil, Gas or Water	Depth Found	Remarks
Sand	Gray	Hard	1010	1028			
Slate & Lime	Gray	Hard	1028	1060			
Slate	Black	Soft	1060	1080			
Lime	Gray	Hard	1080	1100			
Sand	Gray	Hard	1100	1120			
Lime (Gritty)	Gray	Hard	1120	1127			
Sand (Brkn)	Gray	Soft	1127	1214			
Slate & Shells	Gray	Hard	1214	1284			
✓ Sand	Gray	Hard	1284	1402	Gas 1375-79	Maxton	
Slate	Gray	Hard	1402	1483			
Sand	Gray	Hard	1483	1743			
Slate & Shells	Gray	Hard	1743	1809			
			TD	1809			
		Plug back to		1458			
		Perforated		1345-47	2 shots/ft.	1402	
				1351-53	2 shots/ft.	740	
				1378-80	2 shots/ft.	662	

Date 4-5, 19 66

APPROVED Palisades Petroleum Company, Owner

By [Signature] (Title)