

0 1 2 3

LATITUDE 39 ° 50 ' 1

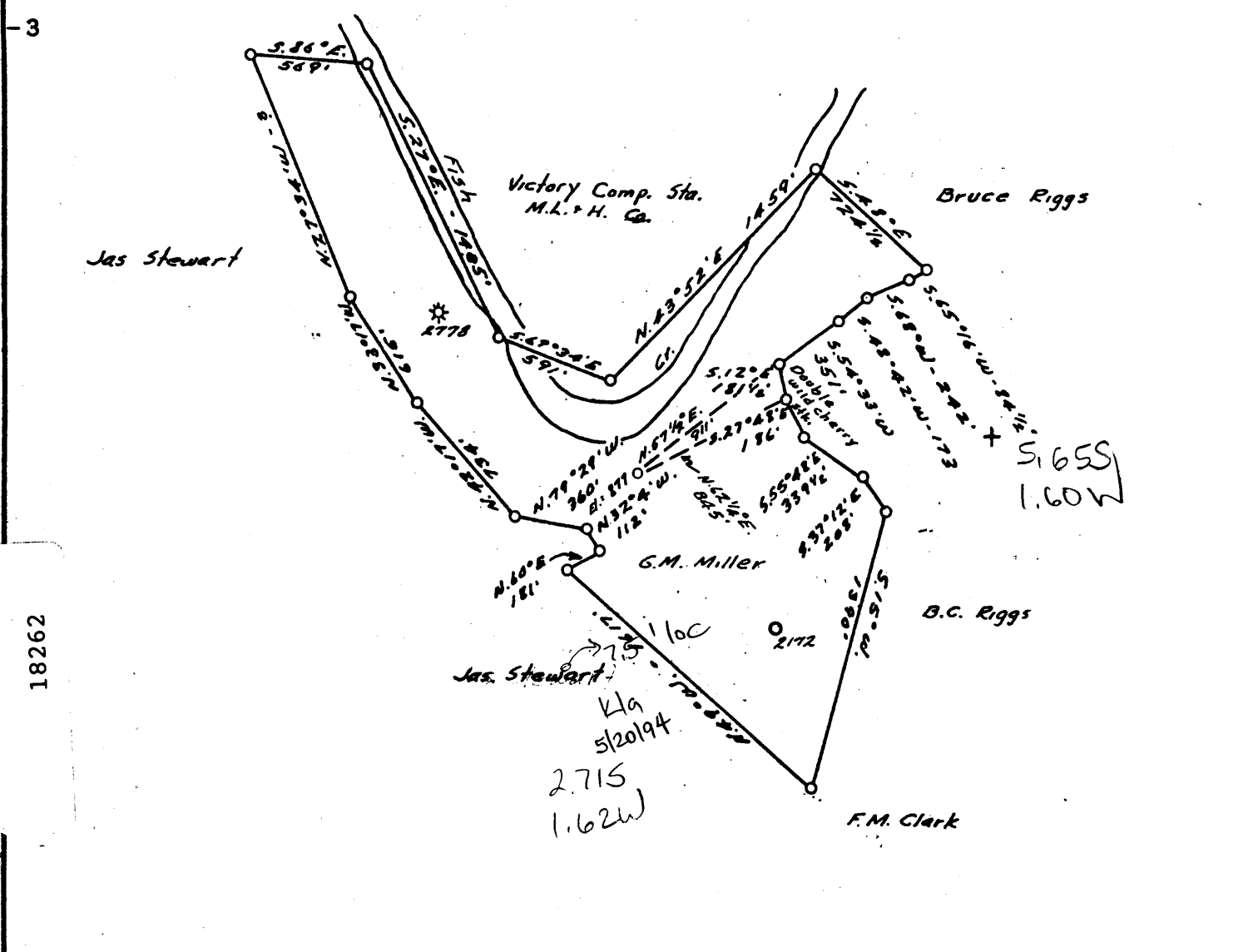
39 47 30

1

2

3

LONGITUDE 90 ° 55'



COAL OWNED BY _____

Partial Plug

NEW LOCATION.....

DRILL DEEPER.....

ABANDONMENT.....

COMPANY The Manufacturers Light & Heat Co.

ADDRESS 800 Union Trust Bldg. Pgh. Pa.

FARM Geo. M. Miller

TRACT _____ ACRES 90 LEASE No. 2298

WELL (FARM) No. 2 SERIAL No. 2265

ELEVATION (SPIRIT LEVEL) 877'

QUADRANGLE Cameron SC

COUNTY Marshall DISTRICT Liberty

ENGINEER Thomas E. Virgin - J.M.

ENGINEER'S REGISTRATION No. 1503

FILE No. _____ DRAWING No. Y-15-195

DATE 28 March. 55 SCALE 1" = 800'

STATE OF WEST VIRGINIA
DEPARTMENT OF MINES
OIL AND GAS DIVISION
CHARLESTON

WELL LOCATION MAP

FILE No. MARS-572-PARTIAL

SEE: 051-0763-T

+ DENOTES LOCATION OF WELL ON UNITED STATES TOPOGRAPHIC MAPS. SCALE 1 TO 62,500. LATITUDE AND LONGITUDE LINES BEING REPRESENTED BY BORDER LINES AS SHOWN.

- DENOTES ONE INCH SPACES ON BORDER LINE OF ORIGINAL TRACING.



STATE OF WEST VIRGINIA
DEPARTMENT OF MINES
OIL AND GAS DIVISION

120

WELL RECORD

Permit No. 11125-372-plugging number

Oil or Gas Well Gas
(KIND)

Company THE MANUFACTURERS LIGHT AND HEAT COMPANY
Address 800 Union Trust Bldg., Pgh., Pa.
Farm Geo. & A. M. Miller Acres 90
Location (waters) _____
Well No. 2265 Elev. 877'
District Liberty County Marshall
The surface of tract is owned in fee by _____
Address _____
Mineral rights are owned by _____
Address _____
Drilling commenced February 17, 1919
Drilling completed March 12, 1919
Date Shot _____ From _____ To _____
With _____
Open Flow _____ /10ths Water in _____ Inch
_____ /10ths Merc. in _____ Inch
Volume 3,193,408 Cu. Ft.
Rock Pressure _____ lbs. _____ hrs.
Oil _____ bbls., 1st 24 hrs.
Fresh water _____ feet _____ feet
Salt water _____ feet _____ feet

Casing and Tubing	Used in Drilling	Left in Well	Packers
Size			Kind of Packer
16			
13			
10	304	304	Size of <u>8 1/4 x 4"</u>
8 3/4	1072	1072	Depth set <u>1558'6"</u>
6 3/4			
5 3/16			
<u>4</u>		1623.5	Perf. top
2			Perf. bottom
Liners Used			Perf. top
			Perf. bottom

CASING CEMENTED _____ SIZE _____ No. Ft. _____ Date _____
COAL WAS ENCOUNTERED AT 120 FEET _____ INCHES
178 FEET _____ INCHES 1146 FEET _____ INCHES
139 FEET _____ INCHES _____ FEET _____ INCHES

Formation	Color	Hard or Soft	Top	Bottom	Oil, Gas or Water	Depth Found	Remarks
Clay			16				
Line & Slate			16	120			
Coal			120	122			
Slate & Line			122	163			
Sand			163	168			
Slate			168	178			
Coal			178	188			
Slate			188	250			
Sand			250	275			
Slate & Line			275	459			
Coal			459	464			
Slate & Line			464	561			
Pgh. Coal			561	569			
Slate & Line			569	677			
Sand			677	690			
Slate & Line			690	1064			
Sand			1064	1089			
Slate			1089	1146			Small show of gas 1074
Coal			1146	1151			Small show of gas 1146
Slate & Line			1151	1230			
Sand			1230	1245			
Slate			1245	1360			
Salt Sand			1360	1390			Small show of gas 1365
Slate & Line			1390	1565			
Maxon Sand			1565	1590			Gas 1580
Slate			1590	1603			
Total Depth			1603				
DRILLED REEPER:							
Commenced 12-13-30		Completed 1-22-31					
6-5/8" casing 1641		1641					
Rock Pressure 362 in 48 Hrs.							
Packer: 6-5/8" x 4" set at 2559' with Anchor Packer							
Maxon			1603	1620			Little gas in Big Injun Sand at 1726 ft.
Big Line			1648	1698			Steel line made 3/10 water in 2" --83,040
Big Injun Sand			1698	1955			
Slate			1955	2004			
Line Shells			2004	2048			



AUG 12 1955

Formation	Color	Hard or Soft	Top	Bottom	Oil, Gas or Water	Depth Found	Remarks
Slate			2048	2073			
Sand Shells			2073	2105			
Slate shells and Lime			2105	2332			
30' Shells			2332	2390			
Pink Rock			2390	2420			
50' Sand			2420	2510			
Slate			2510	2550			
Gordon Sand			2550	2570			
Slate			2570	2594			
Lime Shells			2594	2610			
Slate & Shells			2610	2654			
Fifth Sand			2654	2661			
Slate			2661	2667			
Total Depth			2667				
							Pay gas at 2664'. Steel Line Measurement Test 50/10 water in 2" open. 330,720 cu. 1-22-31, Well tubed with 4" tubing packed with 1 6-5/8 x 4" anchor packer, set at 2559' in Gordon Sand Anchor 107'10" 5 jts. Above pkr. 2576'10" 126 jts. 2684'08" 131 jts. First cage on top of first joint, second gage on top of fifth jt. packer on top of cage. Test with spring gage 1/0-- 2/0--3/1--4/2--5/3. For 1 hr. 48 lbs. 362 lbs in 48 hrs. Initial Capacity--331,000 cu. ft.

Date April 22, 19 55

APPROVED THE MANUFACTURERS LIGHT AND HEAT CO. Owner

By [Signature]
 LAND AGENT (Title)