

520'

590.2

LATITUDE 39° 45' 00"

**SURFACE HOLE**  
 UTM. NAD83, ZONE 17  
 IN METERS  
 N) 4,399,401.5  
 E) 517,710.9  
 UTM. NAD83, ZONE 17  
 IN FEET  
 N) 14,433,703  
 E) 1,698,523

**TARGET POINT 1**  
 UTM. NAD83, ZONE 17  
 IN METERS  
 N) 4,399,523.5  
 E) 517,903.2  
 UTM. NAD83, ZONE 17  
 IN FEET  
 N) 14,434,103  
 E) 1,699,154

**BOTTOM HOLE**  
 UTM. NAD83, ZONE 17  
 IN METERS  
 N) 4,400,107.6  
 E) 516,471.6  
 UTM. NAD83, ZONE 17  
 IN FEET  
 N) 14,436,020  
 E) 1,694,457

NOTE: BORE PATH BASED ON GRID NORTH.

### ACCETTOLO LEASE WELL NO. 2H 318.2± ACRES

#### LEGEND

- LEASED TRACTS
- INTERIOR MINERAL TRACTS
- SURFACE TRACTS
- HARD LEASE LINE

SURFACE HOLE

GASTAR LEASE WV16-0045-000

GASTAR LEASE WV16-0076-001

GASTAR LEASE WV16-0081-000

GASTAR LEASE WV16-0076-001

GASTAR LEASE WV16-0076-001

GASTAR LEASE WV16-0076-001

GASTAR LEASE WV16-0076-001

GASTAR LEASE WV16-0076-001

GASTAR LEASE WV16-0076-001

GASTAR LEASE WV16-0076-001

GASTAR LEASE WV16-0076-001

GASTAR LEASE WV16-0076-001

GASTAR LEASE WV16-0076-001

GASTAR LEASE WV16-0076-001

GASTAR LEASE WV16-0076-001

GASTAR LEASE WV16-0076-001

GASTAR LEASE WV16-0076-001

GASTAR LEASE WV16-0076-001

GASTAR LEASE WV16-0076-001

GASTAR LEASE WV16-0076-001

GASTAR LEASE WV16-0076-001

GASTAR LEASE WV16-0076-001

GASTAR LEASE WV16-0076-001

GASTAR LEASE WV16-0076-001

GASTAR LEASE WV16-0076-001

GASTAR LEASE WV16-0076-001

GASTAR LEASE WV16-0076-001

GASTAR LEASE WV16-0076-001

GASTAR LEASE WV16-0076-001

GASTAR LEASE WV16-0076-001

GASTAR LEASE WV16-0076-001

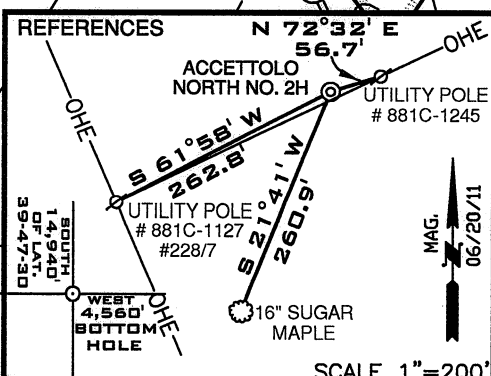
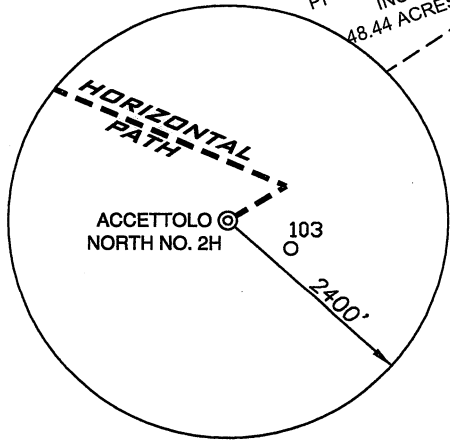
GASTAR LEASE WV16-0076-001

GASTAR LEASE WV16-0076-001

GRID NORTH

LONGITUDE 80° 47' 30"

**NOTES**  
 OWNERSHIP TAKEN FROM PUBLIC RECORDS OF MARSHALL COUNTY, WV IN JUNE, 2011.  
 COORDINATES AND WELL TIES BASED UPON DIFFERENTIAL GPS MEASUREMENTS. WELL LOCATION REFERENCES ARE BASED UPON THE MAGNETIC MERIDIAN.



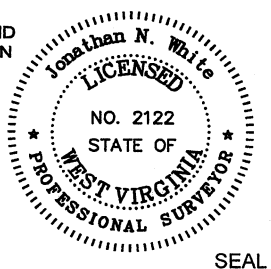
(+) DENOTES LOCATION ON UNITED STATES TOPOGRAPHIC MAPS

SCALE 1"=200'

FILE NUMBER W0100284 (WB1-2)  
 DRAWING NUMBER W100284\_WP2H  
 SCALE 1" = 1000'  
 MINIMUM DEGREE OF ACCURACY 1/200  
 PROVEN SOURCE OF ELEVATION SUBMETER MAPPING GRADE GPS

I, THE UNDERSIGNED, HEREBY CERTIFY THAT THIS PLAT IS CORRECT TO THE BEST OF MY KNOWLEDGE AND BELIEF AND SHOWS ALL THE INFORMATION REQUIRED BY LAW AND THE REGULATIONS ISSUED AND PRESCRIBED BY THE DEPARTMENT OF ENVIRONMENTAL PROTECTION

P.S. Jonathan N. White  
 2122



WVDEP  
 OFFICE OF OIL & GAS  
 601 57TH STREET  
 CHARLESTON, WV 25304

DATE: JULY 18, 2011  
 OPERATORS WELL NO. ACCETTOLO NORTH NO. 2H  
 API WELL NO. 47-051-01503H  
 STATE COUNTY PERMIT

WELL TYPE: OIL  GAS  LIQUID INJECTION  WASTE DISPOSAL   
 (IF "GAS") PRODUCTION  STORAGE  DEEP  SHALLOW   
 LOCATION ELEVATION 1296' WATERSHED FRANKLIN TRIBUTARY OF LONG RUN

DISTRICT FRANKLIN COUNTY MARSHALL  
 QUADRANGLE NEW MARTINSVILLE 7.5' LEASE NUMBER WV16-0045-000, WV16-0081-000, WV16-0076-001

SURFACE OWNER LOUIS J. & PATRICIA ACCETTOLO, ET AL ACREAGE 146.66  
 OIL & GAS ROYALTY OWNER LOUIS J. & PATRICIA ACCETTOLO, ET AL LEASE ACREAGE 318.2

PROPOSED WORK: DRILL  CONVERT  DRILL DEEPER  REDRILL  FRACTURE OR STIMULATE  PLUG OFF OLD FORMATION   
 PERFORATE NEW FORMATION  OTHER PHYSICAL CHANGE (SPECIFY) \_\_\_\_\_

TARGET FORMATION MARCELLUS PLUG & ABANDON  CLEAN OUT & REPLUG   
 ESTIMATED DEPTH 6700' + Horizontal Leg

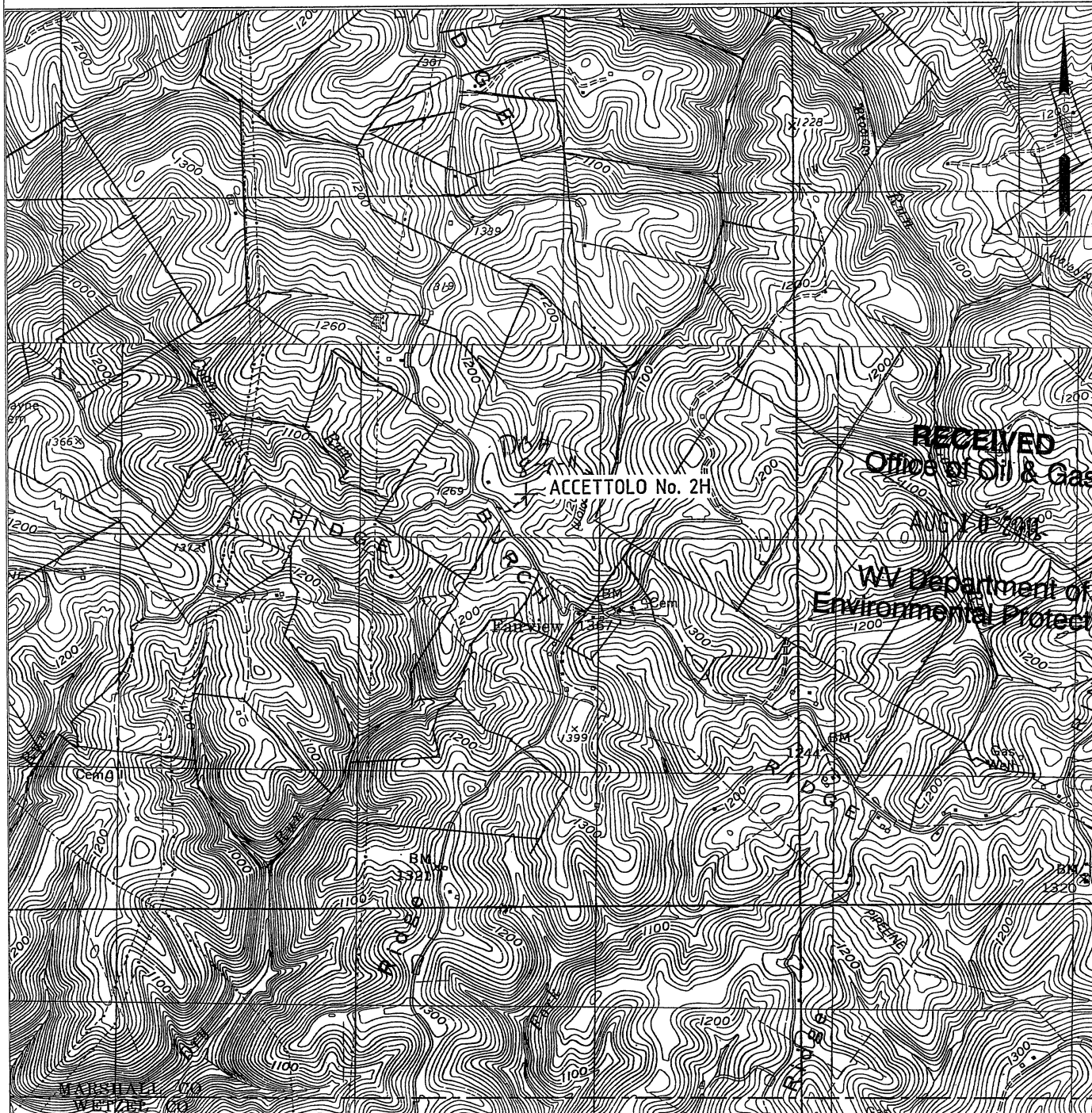
WELL OPERATOR GASTAR EXPLORATION USA, INC. DESIGNATED AGENT MICHAEL McCOWN  
 ADDRESS 229 W MAIN STREET, SUITE 301 CLARKSBURG WV, 26301 ADDRESS 229 W MAIN STREET, SUITE 301 CLARKSBURG WV, 26301

COUNTY NAME PERMIT

WW-9

# PROPOSED ACCETTOLO NORTH WELL No. 2H

PG. 7 OF 8



<b>W0100284</b>	OPERATOR	TOPO SECTION	LEASE NAME
	GASTAR EXPLORATION USA, Inc. 229 W Main Street, Suite 301 Clarksburg, WV 26301	NEW MARTINSVILLE 7.5'	ACCETTOLO
		SCALE:	DATE:
		1"=2000'	DATE: 07/18/11