

Bottom Hole 4,854'

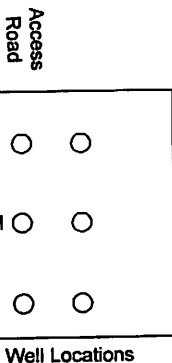
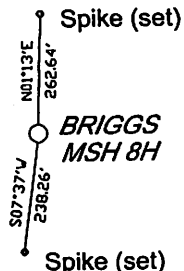
Top Hole 9,304'

Latitude: 39-47-30 N

Longitude: 80-35-00 W

Top Hole 8,872'

Bottom Hole 12,563'

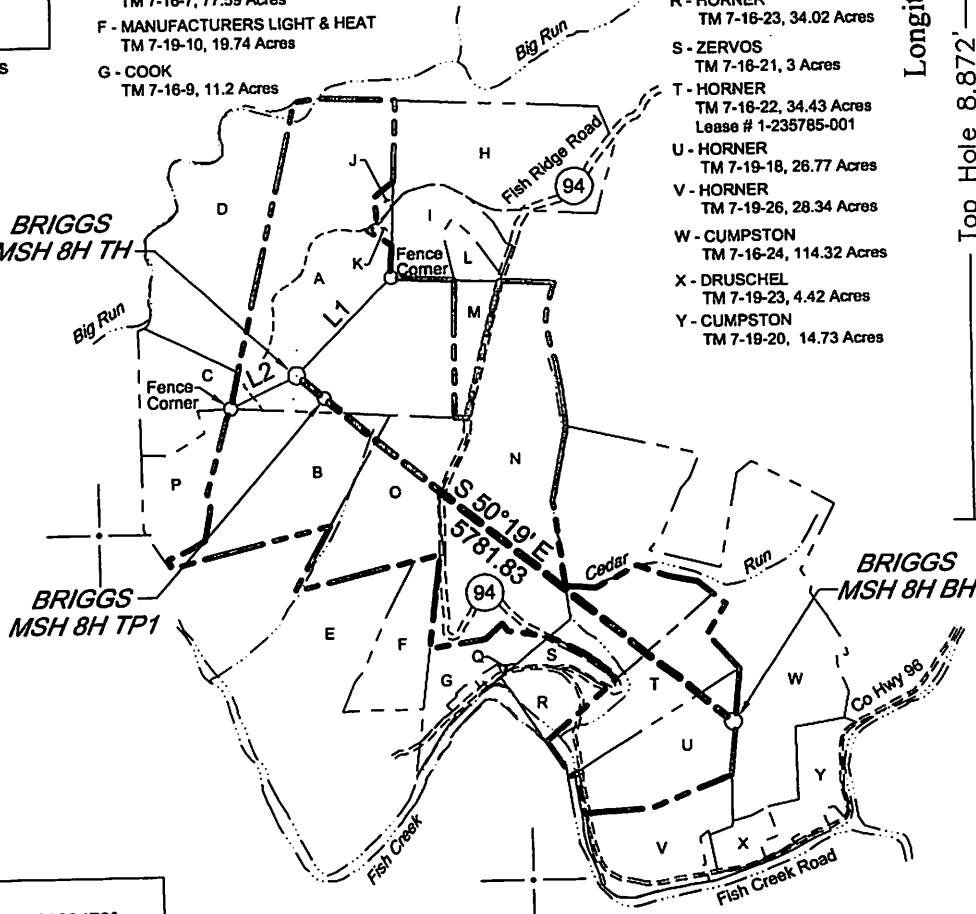
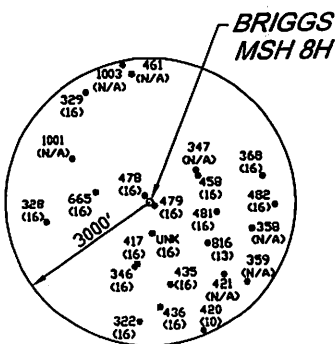


- A - BRIGGS  
TM 7-16-2, 121.42 Acres  
Lease # 1-254788-000
- B - MASON DIXON FARMS, LLC  
TM 7-16-8, 69.72 Acres  
Lease # 1-254733-000
- C - MASON DIXON FARMS, LLC  
TM 7-17-19, 22.8 Acres
- D - McELROY COAL COMPANY  
TM 7-10-8, 50.77 Acres
- E - MASON DIXON FARMS, LLC  
TM 7-16-7, 77.59 Acres
- F - MANUFACTURERS LIGHT & HEAT  
TM 7-19-10, 19.74 Acres
- G - COOK  
TM 7-16-9, 11.2 Acres
- H - LEMASTERS  
TM 7-10-24, 44.08 Acres
- I - YEATER  
TM 7-16-29.4, 17.91 Acres
- J - BRIGGS  
TM 7-16-2.1, 1.02 Acres
- K - BRIGGS  
TM 7-16-2.2, 1.03 Acres
- L - YEATER  
TM 7-16-29.2, 4.92 Acres
- M - BRIGGS  
TM 7-16-3, 10 Acres
- N - BRIGGS  
TM 7-16-4, 81.25 Acres  
Lease # 1-254986-000
- O - BRIGGS  
TM 7-16-5, 37.88 Acres  
Lease # 1-254732-000
- P - MASON DIXON FARMS, LLC  
TM 7-17-19.1, 20 Acres
- Q - SCHIFFER  
TM 7-16-19, .26 Acres
- R - HORNER  
TM 7-16-23, 34.02 Acres
- S - ZERVOS  
TM 7-16-21, 3 Acres
- T - HORNER  
TM 7-16-22, 34.43 Acres  
Lease # 1-235785-001
- U - HORNER  
TM 7-19-18, 26.77 Acres
- V - HORNER  
TM 7-19-26, 28.34 Acres
- W - CUMPSTON  
TM 7-16-24, 114.32 Acres
- X - DRUSCHEL  
TM 7-19-23, 4.42 Acres
- Y - CUMPSTON  
TM 7-19-20, 14.73 Acres

BRIGGS MSH 8H TH

BRIGGS MSH 8H TP1

BRIGGS MSH 8H BH



Top Hole:  
Geographic NAD27: Lat: 39.7669995°; Long: -80.6160470°  
WV North Zone NAD27: N: 463420.0 ft; E: 1686282.3 ft  
UTM Zone 17 North NAD83: N: 4401976.4 m; E: 532902.0 m

Bottom Hole:  
Geographic NAD27: Lat: 39.7570158°; Long: -80.6000575°  
WV North Zone NAD27: N: 459728.3 ft; E: 1690732.1 ft  
UTM Zone 17 North NAD83: N: 4400874.4 m; E: 534276.5 m

Number	Direction	Distance
L1	N 44°58' E	1416.63'
L2	S 64°58' W	766.55'

Note: Ties are based on State Plane Grid North WV North Zone NAD27

FILE #: BRIGGS WELL 8H.DWG  
DRAWING #: REV. 4-26-12  
SCALE: 1"=2000'  
MINIMUM DEGREE OF ACCURACY: 1/2500  
PROVEN SOURCE OF ELEVATION: GPS-OPUS NAVD88

I, THE UNDERSIGNED, HEREBY CERTIFY THAT THIS PLAT IS CORRECT TO THE BEST OF MY KNOWLEDGE AND BELIEF AND SHOWS ALL THE INFORMATION REQUIRED BY LAW AND THE REGULATIONS ISSUED AND PRESCRIBED BY THE DEPARTMENT OF ENVIRONMENTAL PROTECTION.

Signed: *Michael J. Giver*  
R.P.E.: \_\_\_\_\_ L.L.S.: 896

(+) DENOTES LOCATION OF WELL ON UNITED STATES TOPOGRAPHICAL MAPS WVDEP  
OFFICE OF OIL & GAS  
601 57 TH STREET  
CHARLESTON, WV 25304



DATE: April 26, 2012  
OPERATOR'S WELL #: GLADYS BRIGGS MSH 8H  
API WELL #: 47 51 01586 H6A  
STATE COUNTY PERMIT

Well Type:  Oil  Waste Disposal  Production  Deep  
 Gas  Liquid Injection  Storage  Shallow

WATERSHED: BIG RUN ELEVATION: 1396.4'  
COUNTY /DISTRICT: 051-MARSHALL /4- LIBERTY QUADRANGLE: CAMERON  
SURFACE OWNER: HARRISON J. & GLADYS R. BRIGGS ACREAGE: 121.42  
OIL & GAS ROYALTY OWNER: HARRISON J. & GLADYS R. BRIGGS ACREAGE: 121.42  
DRILL  CONVERT  DRILL DEEPER  REDRILL  FRACTURE OR STIMULATE   
PLUG OFF OLD FORMATION  PERFORATE NEW FORMATION  PLUG & ABANDON   
CLEANOUT & REPLUG  OTHER CHANGE  (SPECIFY): \_\_\_\_\_  
TARGET FORMATION: MARCELLUS ESTIMATED DEPTH: TVD - 7,140', TMD - 12,737'  
WELL OPERATOR CHESAPEAKE APPALACHIA, LLC DESIGNATED AGENT ERIC B. GILLESPIE  
Address: P.O. BOX 18496 Address P.O. BOX 6070  
City OKLAHOMA CITY State OK Zip Code 73154-0496 City CHARLESTON State WV Zip Code 25362

12/14/2012

s:/survey/chesapeake/briggs vic-102/briggs well 8H.dwg

WELL GLADYS BRIGGS MSH 8H  
QUAD CAMERON

