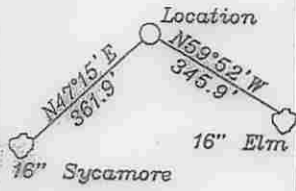


Note: All wells within 500' of the horizontal leg are shown on this plat based upon information taken from DEP mapping, well plats and aerial photos.

Note: No water wells were found within 250' of well location. A dwelling is located S18°21'W 534' from the center of the pad.

References

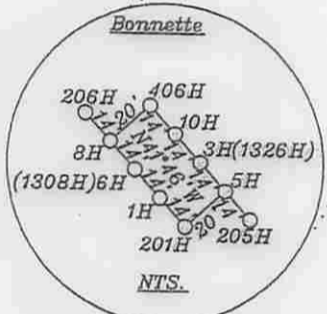
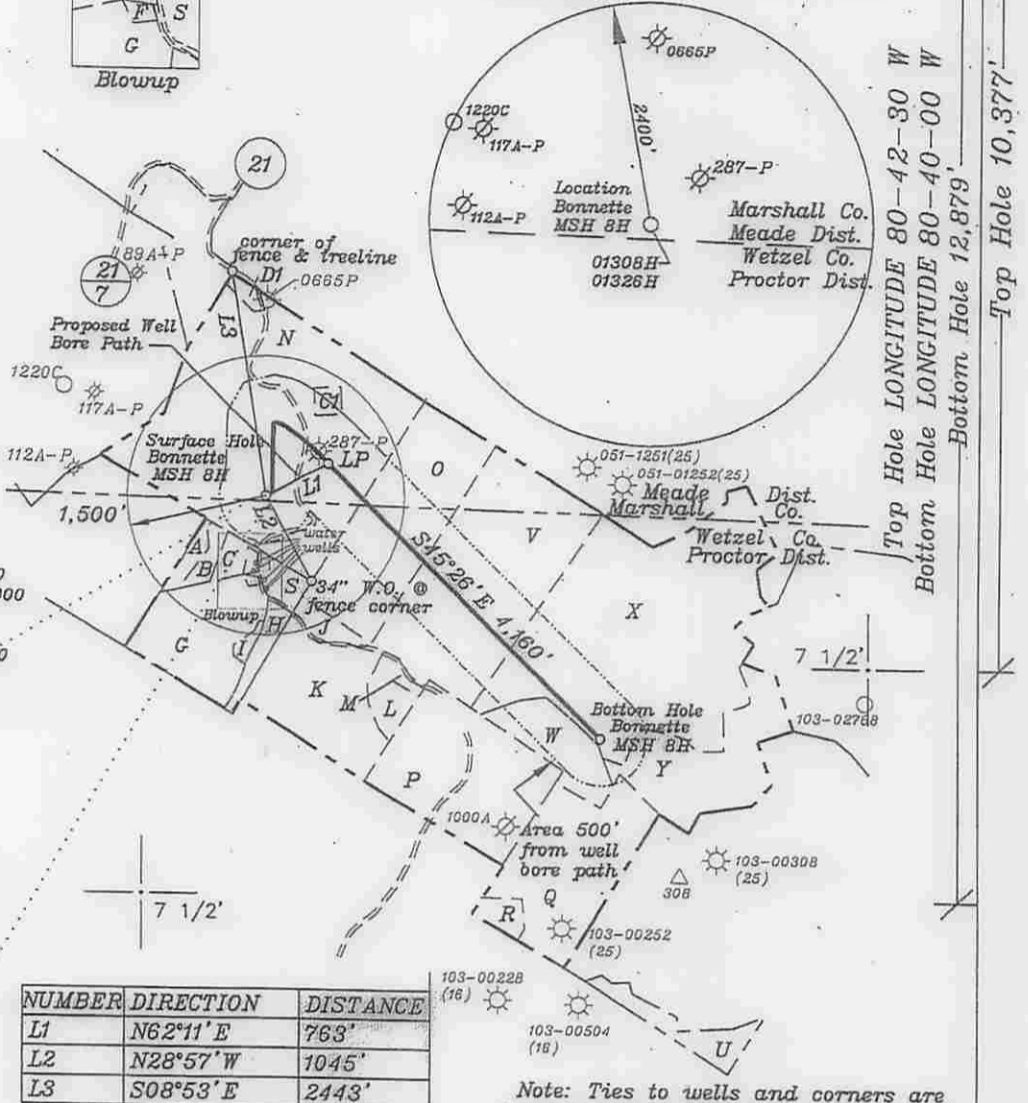


Surface Hole	UTM NAD 83(meters)-4396892.211 N. 524693.981 E
LP	UTM NAD 83(meters)-4397004.116 N. 524897.739 E
Bottom Hole	UTM NAD 83(meters)-4396129.689 N. 525815.540 E



Blowup

- A = Ries 3 Ac. T.M. 3/8
- B = Hohman 4.07 Ac. T.M. 3/8.3
- C = Hohman 4.12 Ac. T.M. 3/8.2&8.1 1-254855-000
- D = B. Ferrell 1 Ac. T.M. 3/9
- E = B. Ferrell 0.54 Ac. T.M. 3/10.1
- F = B. Ferrell 0.33 Ac. T.M. 3/10.5
- G = J. Ferrell 28.97 Ac. T.M. 3/10.3
- H = Miller 5.02 Ac. T.M. 3/10.2
- I = Ferrell 1.29 Ac. T.M. 3/10.4
- J = Zombotti 4.34 Ac. T.M. 3/11.2
- K = R. Yoho et al 38.59 Ac. T.M. 3/11
- L = Blatt 7.42 Ac. T.M. 3/11.3
- M = Herrick 0.65 Ac. T.M. 3/11.1
- N = Bonnette 126.53 Ac. T.M. 22/8 1-254855-000
- O = Fox 56 Ac. T.M. 4/1 1-254904-000
- P = Dulaney 52 Ac. T.M. 4/12
- Q = Klug 48 Ac. T.M. 4/22
- R = Estep 3.45 Ac. T.M. 4/21
- S = Zombotti 4.15 Ac. T.M. 3/10
- U = Scheibelhood 9.8 Ac. T.M. 4/32
- V = Fox 74.7 Ac. T.M. 4/2 1-254904-000
- W = Blatt 22.1 Ac. T.M. 4/13 1-254905-000
- X = Blatt 106.83 Ac. T.M. 4/3&4 1-254905-000
- Y = Blatt 37 Ac. T.M. 4/14 1-254836-000
- Cl = The Co. Comm. of Marshall Co. 3.143 Ac. T.M. 22-8.1 1-254855-000
- D1 = Klug 1 Ac. T.M. 22-7



NTS.

NUMBER	DIRECTION	DISTANCE
L1	N62°11'E	763'
L2	N28°57'W	1045'
L3	S08°53'E	2443'

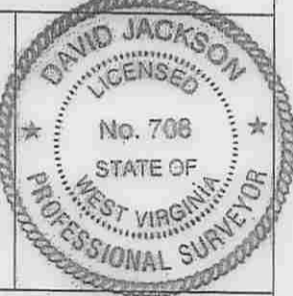
Note: Ties to wells and corners are based on State Plane Grid North-WV North Zone NAD 83

(+) DENOTES LOCATION OF WELL ON UNITED STATES TOPOGRAPHIC MAPS

FILE NO. _____
 DRAWING NO. 1
 SCALE 1" = 2000'
 MINIMUM DEGREE OF ACCURACY 1 in 200
 PROVEN SOURCE OF ELEVATION GPS
submeter unit

I THE UNDERSIGNED, HEREBY CERTIFY THAT THIS PLAT IS CORRECT TO THE BEST OF MY KNOWLEDGE AND BELIEF AND SHOWS ALL THE INFORMATION REQUIRED BY LAW AND THE RULES ISSUED AND PRESCRIBED BY THE DEPARTMENT OF ENVIRONMENTAL PROTECTION.

(SIGNED) David Jackson
 R.P.E. _____ L.L.S. 708



STATE OF WEST VIRGINIA
 Division of Environmental Protection
 OFFICE OF OIL AND GAS

DATE August 28, 2015
 OPERATOR'S WELL NO. Bonnette MSH 8H
 API WELL NO. 47-051-01828H6A Rev. STATE COUNTY PERMIT

WELL TYPE: OIL GAS LIQUID INJECTION WASTE DISPOSAL
 (IF "GAS") PRODUCTION STORAGE DEEP SHALLOW

LOCATION: ELEVATION 1,427.6' WATER SHED Whetstone Creek
 DISTRICT Meade COUNTY Marshall
 QUADRANGLE Wileyville 7 1/2'

SURFACE OWNER Robert and Linda Bonnette ACREAGE 126.53 ac.
 OIL & GAS ROYALTY OWNER Robert and Linda Bonnette, Robert and Barbara Bias, & Larry and Glenda Kress LEASE ACREAGE 426.303 ac.

LEASE NO. _____
 LEASE NO. _____

PROPOSED WORK: DRILL CONVERT DRILL DEEPER REDRILL FRACTURE OR STIMULATE PLUG OFF OLD FORMATION PERFORATE NEW FORMATION OTHER PHYSICAL CHANGE IN WELL (SPECIFY) _____

PLUG AND ABANDON CLEAN OUT AND REPLUG

TARGET FORMATION Marcellus ESTIMATED DEPTH TVD=7,102'; TMD=11,765'
 WELL OPERATOR SWN Production Co. LLC DESIGNATED AGENT Dee Southall
 ADDRESS P.O. Box 1300 Jane Lew, WV 26378 ADDRESS P.O. Box 1300 Jane Lew, WV 26378

09/04/2015