



# Actual Wellpath Report

Hudson S-6HM AWP Proj: 17126'

Page 1 of 10



## REFERENCE WELLPATH IDENTIFICATION

Operator	EQT (TUG HILL OPERATING, LLC)	Well	Hudson S-6HM
Field	Marshall	API	47-051-02377-0000
Facility	Hudson	Wellbore	Hudson S-6HM AWB
Slot	Slot 06		

## REPORT SETUP INFORMATION

Projection System	NAD83 / UTM Zone 17 North, US feet	Software System	WellArchitect® 6.0
North Reference	Grid	User	Edsaryar
Scale	0.999610	Report Generated	2/14/2024 at 2:24:13 PM
Convergence at slot	0.21° East	Database	WA_MPL_EASTERNUS_Defn

## WELLPATH LOCATION

	Local coordinates		Grid coordinates		Geographic coordinates	
	North[ft]	East[ft]	Easting[US ft]	Northing[US ft]	Latitude	Longitude
Slot Location	10.40	21.95	1732325.59	14464559.55	39°49'43.6584"N	80°40'21.4680"W
Facility Reference Pt			1732303.65	14464549.15	39°49'43.5564"N	80°40'21.7498"W
Field Reference Pt			1920470.12	14528304.49	40°00'0.0000"N	80°00'0.0000"W

## WELLPATH DATUM

Calculation method	Minimum curvature	Patterson 294 (RKB) to Facility Vertical Datum	1374.00ft
Horizontal Reference Pt	Slot	Patterson 294 (RKB) to Mean Sea Level	1374.00ft
Vertical Reference Pt	Patterson 294 (RKB)	Patterson 294 (RKB) to Ground Level at Slot (Slot 06)	28.00ft
MD Reference Pt	Patterson 294 (RKB)	Section Origin	N 0.00, E 0.00 ft
Field Vertical Reference	Mean Sea Level	Section Azimuth	146.36°

RECEIVED  
 Office of Oil and Gas  
 DEC 5 3 2024  
 WV Department of  
 Environmental Protection



# Actual Wellpath Report

Hudson S-6HM AWP Proj: 17126'  
Page 2 of 10



## REFERENCE WELLPATH IDENTIFICATION

Operator	EQT (TUG HILL OPERATING, LLC)	Well	Hudson S-6HM
Field	Marshall	API	47-051-02377-0000
Facility	Hudson	Wellbore	Hudson S-6HM AWB
Slot	Slot 06		

WELLPATH DATA (203 stations) † = interpolated, ‡ = extrapolated station												Closure Dist	Closure Dir	DLS	Build Rate	Turn Rate
MD	Inclination	Azimuth	TVD	Vert Sect	North	East	Grid East	Grid North	Latitude	Longitude	[ft]	[°]	[°/100ft]	[°/100ft]	[°/100ft]	
[ft]	[°]	[°]	[ft]	[ft]	[ft]	[ft]	[US ft]	[US ft]								
0.00†	0.000	238.340	0.00	0.00	0.00	0.00	1732325.59	14464559.55	39°49'43.6584"N	80°40'21.4680"W	0.00	0.000	0.00	0.00	0.00	
28.00	0.000	238.340	28.00	0.00	0.00	0.00	1732325.59	14464559.55	39°49'43.6584"N	80°40'21.4680"W	0.00	0.000	0.00	0.00	0.00	
184.00	0.320	238.340	184.00	-0.02	-0.23	-0.37	1732325.22	14464559.32	39°49'43.6561"N	80°40'21.4728"W	0.44	238.340	0.21	0.21	64.11	
202.00	0.280	249.880	202.00	-0.03	-0.27	-0.45	1732325.14	14464559.28	39°49'43.6557"N	80°40'21.4739"W	0.53	239.293	0.40	0.14	134.55	
231.00	0.320	288.900	231.00	-0.11	-0.27	-0.60	1732324.99	14464559.28	39°49'43.6558"N	80°40'21.4757"W	0.66	245.837	0.70	0.48	39.66	
260.00	0.460	300.400	260.00	-0.28	-0.18	-0.78	1732324.82	14464559.37	39°49'43.6566"N	80°40'21.4780"W	0.80	256.703	0.55	-0.07	-139.43	
290.00	0.440	258.570	290.00	-0.43	-0.15	-0.99	1732324.60	14464559.41	39°49'43.6570"N	80°40'21.4807"W	1.00	261.679	1.07	0.65	34.42	
321.00	0.640	269.240	321.00	-0.57	-0.17	-1.28	1732324.31	14464559.38	39°49'43.6568"N	80°40'21.4844"W	1.29	262.403	0.72	0.23	16.40	
351.00	0.710	274.160	350.99	-0.77	-0.16	-1.63	1732323.96	14464559.39	39°49'43.6569"N	80°40'21.4890"W	1.64	264.420	0.30	0.23	16.40	
383.00	0.390	278.480	382.99	-0.97	-0.13	-1.94	1732323.65	14464559.42	39°49'43.6572"N	80°40'21.4929"W	1.94	266.189	1.01	-1.00	13.50	
414.00	0.150	327.390	413.99	-1.08	-0.08	-2.07	1732323.52	14464559.47	39°49'43.6577"N	80°40'21.4945"W	2.07	267.797	1.01	-0.77	157.77	
446.00	0.750	12.380	445.99	-1.27	0.16	-2.04	1732323.55	14464559.71	39°49'43.6601"N	80°40'21.4942"W	2.05	274.486	2.04	1.87	140.59	
478.00	0.600	32.120	477.99	-1.48	0.51	-1.91	1732323.68	14464560.06	39°49'43.6635"N	80°40'21.4925"W	1.98	284.862	0.86	-0.47	61.69	
509.00	0.900	48.480	508.99	-1.58	0.81	-1.64	1732323.95	14464560.36	39°49'43.6664"N	80°40'21.4890"W	1.83	296.145	1.18	0.97	52.77	
541.00	1.030	43.770	540.98	-1.68	1.18	-1.25	1732324.34	14464560.73	39°49'43.6701"N	80°40'21.4840"W	1.72	313.253	0.48	0.41	-14.72	
573.00	0.950	36.270	572.98	-1.83	1.60	-0.90	1732324.69	14464561.15	39°49'43.6743"N	80°40'21.4795"W	1.84	330.712	0.48	-0.25	-23.44	
605.00	0.690	24.660	604.97	-2.02	1.99	-0.66	1732324.93	14464561.54	39°49'43.6781"N	80°40'21.4756"W	2.10	341.631	0.96	-0.81	-36.28	
636.00	0.620	353.000	635.97	-2.27	2.33	-0.60	1732324.99	14464561.88	39°49'43.6814"N	80°40'21.4756"W	2.40	345.458	1.17	-0.23	-102.13	
668.00	0.480	22.120	667.97	-2.50	2.62	-0.57	1732325.02	14464562.17	39°49'43.6843"N	80°40'21.4753"W	2.68	347.652	0.96	-0.44	91.00	
699.00	0.470	14.200	698.97	-2.66	2.87	-0.49	1732325.10	14464562.42	39°49'43.6867"N	80°40'21.4742"W	2.91	350.220	0.21	-0.03	-25.55	
730.00	0.420	299.540	729.97	-2.85	3.05	-0.56	1732325.03	14464562.59	39°49'43.6885"N	80°40'21.4751"W	3.10	349.549	1.75	-0.16	-240.84	
761.00	0.070	286.690	760.97	-2.96	3.11	-0.68	1732324.91	14464562.66	39°49'43.6885"N	80°40'21.4766"W	3.18	347.677	1.14	-1.13	-41.45	
793.00	0.410	259.040	792.97	-3.02	3.09	-0.81	1732324.78	14464562.64	39°49'43.6891"N	80°40'21.4766"W	3.18	345.317	1.09	1.06	-86.41	
825.00	0.420	242.380	824.97	-3.08	3.01	-1.03	1732324.56	14464562.56	39°49'43.6882"N	80°40'21.4810"W	3.20	341.202	0.38	0.03	-52.06	
857.00	0.110	261.150	856.97	-3.10	2.96	-1.16	1732324.43	14464562.50	39°49'43.6876"N	80°40'21.4827"W	3.18	341.202	0.38	0.03	-52.06	
888.00	0.260	235.140	887.97	-3.11	2.91	-1.25	1732324.34	14464562.46	39°49'43.6872"N	80°40'21.4839"W	3.17	338.563	0.99	-0.97	58.66	
903.00	0.230	285.030	902.97	-3.14	2.90	-1.30	1732324.29	14464562.45	39°49'43.6871"N	80°40'21.4846"W	3.18	336.800	0.54	0.48	-83.90	
920.00	0.640	254.740	919.97	-3.19	2.88	-1.43	1732324.16	14464562.43	39°49'43.6869"N	80°40'21.4862"W	3.22	335.773	1.39	-0.20	332.60	
951.00	0.670	261.570	950.96	-3.32	2.81	-1.78	1732323.82	14464562.36	39°49'43.6862"N	80°40'21.4906"W	3.32	333.632	2.68	2.41	-178.18	
983.00	0.700	262.350	982.96	-3.49	2.76	-2.15	1732323.44	14464562.31	39°49'43.6857"N	80°40'21.4955"W	3.50	327.722	0.27	0.10	22.03	
															2.44	

RECEIVED  
 Office of Oil and Gas  
 DEC 23 2024  
 WV Department of  
 Environmental Protection



# Actual Wellpath Report

Hudson S-6HM AWP Proj: 17126'  
Page 3 of 10



## REFERENCE WELLPATH IDENTIFICATION

Operator	EQT (TUG HILL OPERATING, LLC)	Well	Hudson S-6HM
Field	Marshall	API	47-051-02377-0000
Facility	Hudson	Wellbore	Hudson S-6HM AWB
Slot	Slot 06		

## WELLPATH DATA (203 stations)

MD [ft]	Inclination [°]	Azimuth [°]	TVD [ft]	Vert Sect [ft]	North [ft]	East [ft]	Grid East [US ft]	Grid North [US ft]	Latitude	Longitude	Closure Dist [ft]	Closure Dir [°]	DLS ["/100ft]	Build Rate ["/100ft]	Turn Rate ["/100ft]
1014.00	0.810	282.540	1013.96	-3.73	2.78	-2.56	1732323.04	14464562.33	39°49'43.6860"N	80°40'21.5006"W	3.78	317.403	0.92	0.35	65.13
1046.00	0.590	257.720	1045.96	-3.95	2.79	-2.94	1732322.65	14464562.34	39°49'43.6861"N	80°40'21.5055"W	4.05	313.563	1.16	-0.69	-77.56
1078.00	0.940	281.650	1077.95	-4.20	2.81	-3.36	1732322.24	14464562.36	39°49'43.6863"N	80°40'21.5109"W	4.38	309.960	1.46	1.09	74.78
1177.00	1.050	330.580	1176.94	-5.68	3.77	-4.60	1732321.00	14464563.31	39°49'43.6958"N	80°40'21.5268"W	5.94	309.327	0.84	0.11	49.42
1272.00	0.440	268.670	1271.93	-6.74	4.52	-5.39	1732320.20	14464564.06	39°49'43.7032"N	80°40'21.5369"W	7.03	309.962	0.98	-0.64	-65.17
1398.00	0.270	83.800	1397.93	-6.87	4.54	-5.58	1732320.01	14464564.08	39°49'43.7034"N	80°40'21.5393"W	7.19	309.124	0.56	-0.13	138.99
1493.00	0.560	90.290	1492.93	-6.50	4.56	-4.89	1732320.70	14464564.11	39°49'43.7036"N	80°40'21.5305"W	6.69	312.986	0.31	0.31	6.83
1588.00	0.850	111.740	1587.92	-5.67	4.29	-3.77	1732321.82	14464563.84	39°49'43.7010"N	80°40'21.5162"W	5.72	318.710	0.41	0.31	22.58
1683.00	0.840	128.090	1682.91	-4.42	3.60	-2.57	1732323.02	14464563.15	39°49'43.6941"N	80°40'21.5008"W	4.43	324.518	0.25	-0.01	17.21
1777.00	1.070	120.440	1776.90	-2.98	2.73	-1.27	1732324.32	14464562.28	39°49'43.6855"N	80°40'21.4842"W	3.02	335.085	0.28	0.24	-8.14
1872.00	0.820	357.790	1871.89	-2.76	2.96	-0.53	1732325.06	14464562.51	39°49'43.6877"N	80°40'21.4747"W	3.01	349.833	1.75	-0.26	-129.11
1967.00	1.000	342.670	1966.88	-4.14	4.44	-0.80	1732324.79	14464563.98	39°49'43.7023"N	80°40'21.4781"W	4.51	349.715	0.31	0.19	-15.92
2062.00	0.350	3.300	2061.87	-5.17	5.52	-1.04	1732324.56	14464565.06	39°49'43.7129"N	80°40'21.4810"W	5.61	349.373	0.72	-0.68	21.72
2156.00	0.680	107.540	2155.87	-4.96	5.63	-0.49	1732325.10	14464565.18	39°49'43.7141"N	80°40'21.4740"W	5.66	355.064	0.89	0.35	110.89
2251.00	0.840	98.170	2250.86	-4.06	5.37	0.74	1732326.33	14464564.91	39°49'43.7114"N	80°40'21.4583"W	5.42	7.854	0.21	0.17	-9.86
2346.00	0.920	42.450	2345.85	-3.78	5.83	1.94	1732327.53	14464565.38	39°49'43.7159"N	80°40'21.4428"W	6.15	18.444	0.87	0.08	-58.65
2403.00	1.580	9.620	2402.84	-4.46	6.94	2.38	1732327.97	14464566.49	39°49'43.7269"N	80°40'21.4287"W	7.34	18.956	1.66	1.16	-57.60
2454.00	1.540	15.130	2453.82	-5.42	8.30	2.68	1732328.27	14464567.84	39°49'43.7403"N	80°40'21.4333"W	8.72	17.906	0.30	-0.08	10.80
2549.00	1.550	8.610	2548.79	-7.21	10.80	3.21	1732328.80	14464570.35	39°49'43.7650"N	80°40'21.4264"W	11.27	16.536	0.19	0.01	-6.86
2644.00	2.760	21.660	2643.72	-9.47	14.20	4.24	1732329.83	14464573.74	39°49'43.7985"N	80°40'21.4130"W	14.82	16.641	1.37	1.27	13.74
2739.00	4.320	27.440	2738.53	-12.50	19.50	6.74	1732332.32	14464579.04	39°49'43.8508"N	80°40'21.3808"W	20.63	19.060	1.68	1.64	6.08
2834.00	6.120	29.870	2833.14	-16.49	27.06	10.91	1732336.49	14464586.60	39°49'43.9255"N	80°40'21.3269"W	29.18	21.950	1.91	1.89	2.56
2928.00	7.940	35.120	2926.43	-21.08	36.72	17.14	1732342.72	14464596.26	39°49'44.0207"N	80°40'21.2466"W	40.52	25.019	2.05	1.94	5.59
3023.00	8.770	24.100	3020.42	-27.32	48.70	23.87	1732349.45	14464608.23	39°49'44.1388"N	80°40'21.1598"W	54.24	26.112	1.89	0.87	-11.60
3118.00	8.490	20.110	3114.35	-35.33	61.90	29.24	1732354.82	14464621.42	39°49'44.2690"N	80°40'21.0903"W	68.46	25.286	0.70	-0.29	-4.20
3213.00	9.040	22.200	3208.24	-43.67	75.39	34.47	1732360.05	14464634.91	39°49'44.4022"N	80°40'21.0226"W	82.90	24.571	0.67	0.58	2.20
3308.00	9.880	23.650	3301.95	-52.27	89.77	40.56	1732366.13	14464649.28	39°49'44.5441"N	80°40'20.9439"W	98.51	24.315	0.92	0.88	1.53
3403.00	9.230	22.350	3395.63	-60.93	104.28	46.73	1732372.30	14464663.79	39°49'44.6873"N	80°40'20.8642"W	114.27	24.137	0.72	-0.68	-1.37
3497.00	9.210	27.250	3488.42	-68.81	117.94	53.04	1732378.61	14464677.44	39°49'44.8220"N	80°40'20.7827"W	129.32	24.214	0.84	-0.02	5.21
3592.00	8.580	25.000	3582.27	-76.19	131.12	59.51	1732385.08	14464690.62	39°49'44.9521"N	80°40'20.6990"W	144.00	24.412	0.76	-0.66	-2.37

RECEIVED  
Office of Oil and Gas  
DUC 5 3 2014  
NY Department of  
Environmental Protection



# Actual Wellpath Report

Hudson S-6HM AWP Proj: 17126'  
Page 4 of 10



## REFERENCE WELLPATH IDENTIFICATION

Operator	EQT (TUG HILL OPERATING, LLC)	Well	Hudson S-6HM
Field	Marshall	API	47-051-02377-0000
Facility	Hudson	Wellbore	Hudson S-6HM AWB
Slot	Slot 06		

## WELLPATH DATA (203 stations)

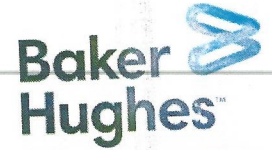
MD [ft]	Inclination [°]	Azimuth [°]	TVD [ft]	Vert Sect [ft]	North [ft]	East [ft]	Grid East [US ft]	Grid North [US ft]	Latitude	Longitude	Closure Dist [ft]	Closure Dir [°]	DLS [°/100ft]	Build Rate [°/100ft]	Turn Rate [°/100ft]
3687.00	8.690	28.120	3676.20	-83.28	143.87	65.89	1732391.46	14464703.37	39°49'45.0779"N	80°40'20.6167"W	158.25	24.607	0.51	0.12	3.28
3782.00	8.860	24.100	3770.09	-90.58	156.88	72.26	1732397.82	14464716.37	39°49'45.2062"N	80°40'20.5344"W	172.72	24.731	0.67	0.18	-4.23
3876.00	9.430	22.400	3862.89	-98.74	170.61	78.15	1732403.71	14464730.09	39°49'45.3416"N	80°40'20.4583"W	187.66	24.611	0.67	0.61	-1.81
3971.00	9.260	23.990	3956.63	-107.18	184.79	84.23	1732409.78	14464744.27	39°49'45.4815"N	80°40'20.3798"W	203.08	24.503	0.33	-0.18	1.67
4065.00	9.300	24.410	4049.40	-115.25	198.61	90.44	1732415.99	14464758.09	39°49'45.6179"N	80°40'20.2995"W	218.24	24.482	0.08	0.04	0.45
4160.00	10.120	21.830	4143.04	-124.05	213.35	96.72	1732422.27	14464772.82	39°49'45.7634"N	80°40'20.2183"W	234.25	24.385	0.98	0.86	-2.72
4254.00	10.160	21.580	4235.57	-133.46	228.73	102.84	1732428.39	14464788.19	39°49'45.9151"N	80°40'20.1392"W	250.78	24.208	0.06	0.04	-0.27
4349.00	9.740	25.100	4329.14	-142.41	243.80	109.33	1732434.87	14464803.25	39°49'46.0638"N	80°40'20.0553"W	267.19	24.153	0.78	-0.44	3.71
4444.00	9.840	22.990	4422.76	-151.04	258.55	115.91	1732441.45	14464818.00	39°49'46.2093"N	80°40'19.9702"W	283.34	24.146	0.39	0.11	-2.22
4539.00	9.800	21.140	4516.37	-160.17	273.56	121.99	1732447.53	14464833.00	39°49'46.3575"N	80°40'19.8915"W	299.53	24.034	0.33	-0.04	-1.95
4634.00	8.430	22.010	4610.16	-168.76	287.56	127.52	1732453.06	14464847.00	39°49'46.4956"N	80°40'19.8200"W	314.56	23.915	1.45	-1.44	0.92
4728.00	7.760	19.450	4703.23	-176.46	299.93	132.21	1732457.75	14464859.36	39°49'46.6177"N	80°40'19.7593"W	327.78	23.788	0.81	-0.71	-2.72
4823.00	8.470	15.380	4797.28	-184.90	312.72	136.20	1732461.74	14464872.15	39°49'46.7440"N	80°40'19.7075"W	341.10	23.535	0.96	0.75	-4.28
4918.00	9.320	22.660	4891.14	-193.76	326.57	141.02	1732466.56	14464885.99	39°49'46.8806"N	80°40'19.6451"W	355.72	23.356	1.48	0.89	7.66
5013.00	9.210	24.070	4984.90	-202.09	340.61	147.09	1732472.62	14464900.03	39°49'47.0192"N	80°40'19.5667"W	371.01	23.356	0.27	-0.12	1.48
5060.00	8.710	23.630	5031.32	-206.02	347.30	150.05	1732475.58	14464906.72	39°49'47.0852"N	80°40'19.5284"W	378.33	23.366	1.07	-1.06	-0.94
5155.00	9.520	23.390	5125.12	-214.19	361.11	156.05	1732481.58	14464920.51	39°49'47.2214"N	80°40'19.4509"W	393.38	23.371	0.85	0.85	-0.25
5251.00	9.480	23.750	5219.81	-222.77	375.63	162.39	1732487.91	14464935.03	39°49'47.3647"N	80°40'19.3690"W	409.23	23.379	0.07	-0.04	0.37
5346.00	9.330	23.480	5313.53	-231.16	389.85	168.61	1732494.13	14464949.25	39°49'47.5050"N	80°40'19.2886"W	424.75	23.388	0.16	-0.16	-0.28
5441.00	9.220	23.720	5407.29	-239.45	403.88	174.74	1732500.26	14464963.27	39°49'47.6435"N	80°40'19.2093"W	440.06	23.395	0.12	-0.12	0.25
5536.00	9.470	23.840	5501.03	-247.75	418.00	180.96	1732506.47	14464977.39	39°49'47.7827"N	80°40'19.1290"W	455.49	23.408	0.26	0.26	0.13
5631.00	9.810	24.010	5594.69	-256.29	432.54	187.41	1732512.92	14464991.92	39°49'47.9262"N	80°40'19.0456"W	471.39	23.426	0.36	0.36	0.18
5726.00	9.670	23.350	5688.32	-264.96	447.26	193.86	1732519.38	14465006.63	39°49'48.0714"N	80°40'18.9621"W	487.47	23.434	0.19	-0.15	-0.69
5821.00	9.710	23.560	5781.96	-273.65	461.93	200.23	1732525.74	14465021.30	39°49'48.2162"N	80°40'18.8799"W	503.46	23.435	0.06	0.04	0.22
5915.00	9.680	24.370	5874.62	-282.13	476.39	206.66	1732532.17	14465035.76	39°49'48.3589"N	80°40'18.7968"W	519.29	23.451	0.15	-0.03	0.86
6010.00	9.820	24.100	5968.25	-290.69	491.06	213.26	1732538.77	14465050.42	39°49'48.5036"N	80°40'18.7114"W	535.37	23.474	0.16	0.15	-0.28
6105.00	9.660	23.560	6061.88	-299.33	505.76	219.75	1732545.26	14465065.12	39°49'48.6487"N	80°40'18.6275"W	551.44	23.485	0.19	-0.17	-0.57
6200.00	9.830	26.210	6155.51	-307.72	520.35	226.52	1732552.02	14465079.69	39°49'48.7925"N	80°40'18.5401"W	567.51	23.525	0.50	0.18	2.79
6294.00	10.730	90.360	6248.27	-306.85	527.51	238.85	1732564.35	14465086.86	39°49'48.8629"N	80°40'18.3817"W	579.07	24.361	11.60	0.96	68.24
6389.00	13.900	118.180	6341.16	-291.83	522.06	257.78	1732583.27	14465081.41	39°49'48.8084"N	80°40'18.1394"W	582.23	26.279	6.99	3.34	29.28

RECEIVED  
 Office of Oil and Gas  
 UIC 63 2024  
 NY State Dept of Environmental Protection



# Actual Wellpath Report

Hudson S-6HM AWP Proj: 17126'  
Page 5 of 10



## REFERENCE WELLPATH IDENTIFICATION

Operator	EQT (TUG HILL OPERATING, LLC)	Well	Hudson S-6HM
Field	Marshall	API	47-051-02377-0000
Facility	Hudson	Wellbore	Hudson S-6HM AWB
Slot	Slot 06		

## WELLPATH DATA (203 stations)

MD [ft]	Inclination [°]	Azimuth [°]	TVD [ft]	Vert Sect [ft]	North [ft]	East [ft]	Grid East [US ft]	Grid North [US ft]	Latitude	Longitude	Closure Dist [ft]	Closure Dir [°]	DLS [°/100ft]	Build Rate [°/100ft]	Turn Rate [°/100ft]
6484.00	21.420	133.190	6431.66	-264.83	504.77	280.53	1732606.01	14465064.12	39°49'48.6366"N	80°40'17.8486"W	577.48	29.063	9.19	7.92	15.80
6579.00	29.940	136.690	6517.20	-224.49	475.59	309.49	1732634.96	14465034.95	39°49'48.3472"N	80°40'17.4787"W	567.42	33.054	9.11	8.97	3.68
6674.00	38.830	137.650	6595.52	-171.58	436.25	345.89	1732671.34	14464995.63	39°49'47.9571"N	80°40'17.0140"W	556.73	38.410	9.38	9.36	1.01
6769.00	47.640	139.380	6664.67	-107.17	387.50	388.89	1732714.33	14464946.90	39°49'47.4738"N	80°40'16.4651"W	548.99	45.103	9.36	9.27	1.82
6865.00	57.530	144.040	6722.95	-31.29	327.63	435.89	1732761.31	14464887.05	39°49'46.8804"N	80°40'15.8655"W	545.29	53.071	11.00	10.30	4.85
6960.00	66.190	143.190	6767.71	52.31	260.27	485.56	1732810.96	14464819.72	39°49'46.2129"N	80°40'15.2320"W	550.92	61.808	9.15	9.12	-0.89
7055.00	73.410	145.120	6800.49	141.33	188.03	537.70	1732863.08	14464747.50	39°49'45.4971"N	80°40'14.5671"W	569.63	70.726	7.84	7.60	2.03
7150.00	82.320	149.980	6820.46	234.07	109.72	587.42	1732912.78	14464669.23	39°49'44.7214"N	80°40'13.9336"W	597.58	79.420	10.63	9.38	5.12
7246.00	88.280	148.400	6828.32	329.58	27.59	636.40	1732961.74	14464587.13	39°49'43.9080"N	80°40'13.3096"W	637.00	87.518	6.42	6.21	-1.65
7341.00	88.130	149.790	6831.29	424.42	-53.88	685.17	1733010.49	14464505.69	39°49'43.1010"N	80°40'12.6883"W	687.29	94.496	1.47	-0.16	1.46
7436.00	88.130	148.820	6834.39	519.25	-135.53	733.64	1733058.94	14464424.08	39°49'42.2924"N	80°40'12.0709"W	746.05	100.466	1.02	0.00	-1.02
7531.00	88.930	150.650	6836.83	614.05	-217.55	781.50	1733106.78	14464342.09	39°49'41.4801"N	80°40'11.4613"W	811.22	105.556	2.10	0.84	1.93
7625.00	88.620	149.320	6838.84	707.83	-298.92	828.51	1733153.78	14464260.75	39°49'40.6742"N	80°40'10.8627"W	880.79	109.839	1.45	-0.33	-1.41
7720.00	88.440	149.500	6841.28	802.67	-380.67	876.84	1733202.08	14464179.03	39°49'39.8645"N	80°40'10.2471"W	955.91	113.468	0.27	-0.19	0.19
7815.00	88.470	148.950	6843.84	897.51	-462.26	925.43	1733250.66	14464097.47	39°49'39.0564"N	80°40'9.6281"W	1034.46	116.543	0.58	0.03	-0.58
7909.00	88.590	149.310	6846.25	991.37	-542.92	973.64	1733298.85	14464016.84	39°49'38.2576"N	80°40'9.0140"W	1114.79	119.145	0.40	0.13	0.38
8004.00	88.310	149.170	6848.82	1086.22	-624.53	1022.21	1733347.40	14463935.27	39°49'37.4493"N	80°40'8.3953"W	1197.90	121.423	0.33	-0.29	-0.15
8099.00	88.340	149.170	6851.60	1181.06	-706.07	1070.88	1733396.05	14463853.76	39°49'36.6417"N	80°40'7.7754"W	1282.70	123.398	0.03	0.03	0.00
8194.00	88.490	149.050	6854.23	1275.92	-787.56	1119.63	1733444.78	14463772.30	39°49'35.8345"N	80°40'7.1544"W	1368.88	125.123	0.20	0.16	-0.13
8289.00	88.090	149.050	6857.06	1370.77	-869.00	1168.47	1733493.60	14463690.89	39°49'35.0280"N	80°40'6.5323"W	1456.19	126.638	0.42	-0.42	0.00
8385.00	88.000	149.200	6860.34	1466.60	-951.35	1217.70	1733542.82	14463608.58	39°49'34.2123"N	80°40'5.9052"W	1545.27	127.999	0.18	-0.09	0.16
8479.00	88.220	149.280	6863.44	1560.43	-1032.08	1265.75	1733590.85	14463527.88	39°49'33.4127"N	80°40'5.2932"W	1633.19	129.193	0.25	0.23	0.09
8574.00	88.430	149.420	6866.21	1655.26	-1113.77	1314.16	1733639.24	14463446.22	39°49'32.6036"N	80°40'4.6766"W	1722.65	130.282	0.27	0.22	0.15
8669.00	88.310	149.450	6868.92	1750.09	-1195.54	1362.45	1733687.51	14463364.48	39°49'31.7938"N	80°40'4.0616"W	1812.62	131.267	0.13	-0.13	0.03
8764.00	88.520	149.060	6871.54	1844.93	-1277.15	1411.00	1733736.04	14463282.90	39°49'30.9854"N	80°40'3.4432"W	1903.17	132.150	0.47	0.22	-0.41
8859.00	88.590	149.540	6873.94	1939.77	-1358.81	1459.49	1733784.50	14463201.27	39°49'30.1767"N	80°40'2.8257"W	1994.11	132.954	0.51	0.07	0.51
8954.00	88.190	149.200	6876.61	2034.61	-1440.53	1507.87	1733832.87	14463119.59	39°49'29.3673"N	80°40'2.2095"W	2085.37	133.692	0.55	-0.42	-0.36
9049.00	88.090	149.050	6879.69	2129.45	-1522.02	1556.59	1733881.57	14463038.13	39°49'28.5602"N	80°40'1.5888"W	2177.05	134.357	0.19	-0.11	-0.16
9143.00	87.910	149.220	6882.97	2223.28	-1602.66	1604.79	1733929.75	14462957.52	39°49'27.7615"N	80°40'0.9750"W	2268.01	134.962	0.26	-0.19	0.18
9238.00	88.150	149.840	6886.24	2318.08	-1684.49	1652.93	1733977.87	14462875.72	39°49'26.9510"N	80°40'0.3618"W	2360.02	135.542	0.70	0.25	0.65

RECEIVED  
Office of Oil and Gas  
DEC 5 3 2014  
WV Department of  
Environmental Protection



# Actual Wellpath Report

Hudson S-6HM AWP Proj: 17126'  
Page 6 of 10



### REFERENCE WELLPATH IDENTIFICATION

Operator	EQT (TUG HILL OPERATING, LLC)	Well	Hudson S-6HM
Field	Marshall	API	47-051-02377-0000
Facility	Hudson	Wellbore	Hudson S-6HM AWB
Slot	Slot 06		

### WELLPATH DATA (203 stations)

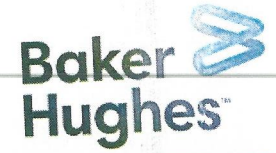
MD [ft]	Inclination [°]	Azimuth [°]	TVD [ft]	Vert Sect [ft]	North [ft]	East [ft]	Grid East [US ft]	Grid North [US ft]	Latitude	Longitude	Closure Dist [ft]	Closure Dir [°]	DLS [°/100ft]	Build Rate [°/100ft]	Turn Rate [°/100ft]
9333.00	87.970	149.440	6889.45	2412.87	-1766.42	1700.92	1734025.84	14462793.83	39°49'26.1396"N	80°39'59.7507"W	2452.21	136.082	0.46	-0.19	-0.42
9428.00	87.850	147.650	6892.92	2507.73	-1847.40	1750.46	1734075.36	14462712.88	39°49'25.3375"N	80°39'59.1196"W	2544.99	136.543	1.89	-0.13	-1.88
9523.00	88.090	149.470	6896.28	2602.60	-1928.40	1799.98	1734124.86	14462631.91	39°49'24.5352"N	80°39'58.4888"W	2637.92	136.973	1.93	0.25	1.92
9618.00	88.180	149.630	6899.38	2697.40	-2010.25	1848.10	1734172.96	14462550.09	39°49'23.7245"N	80°39'57.8760"W	2730.67	137.407	0.19	0.09	0.17
9712.00	88.030	148.700	6902.48	2791.23	-2090.92	1896.25	1734221.10	14462469.45	39°49'22.9255"N	80°39'57.2627"W	2822.71	137.795	1.00	-0.16	-0.99
9807.00	88.550	149.360	6905.32	2886.09	-2172.34	1945.12	1734269.94	14462388.07	39°49'22.1191"N	80°39'56.6404"W	2915.91	138.159	0.88	0.55	0.69
9902.00	88.280	150.480	6907.95	2980.87	-2254.51	1992.71	1734317.52	14462305.92	39°49'21.3052"N	80°39'56.0343"W	3008.94	138.527	1.21	-0.28	1.18
9996.00	87.600	149.880	6911.33	3074.60	-2336.01	2039.42	1734364.21	14462224.46	39°49'20.4981"N	80°39'55.4395"W	3101.00	138.878	0.96	-0.72	-0.64
10092.00	88.030	150.730	6914.99	3170.30	-2419.34	2086.95	1734411.72	14462141.16	39°49'19.6728"N	80°39'54.8344"W	3195.08	139.219	0.99	0.45	0.89
10187.00	87.600	149.560	6918.61	3265.02	-2501.67	2134.20	1734458.95	14462058.86	39°49'18.8574"N	80°39'54.2327"W	3288.34	139.532	1.31	-0.45	-1.23
10281.00	87.910	148.150	6922.29	3358.86	-2582.06	2182.78	1734507.51	14461978.50	39°49'18.0612"N	80°39'53.6140"W	3381.06	139.790	1.53	0.33	-1.50
10376.00	87.320	150.460	6926.24	3453.64	-2663.67	2231.23	1734555.94	14461896.92	39°49'17.2528"N	80°39'52.9970"W	3474.70	140.449	2.51	-0.62	2.43
10471.00	88.250	148.700	6929.92	3548.42	-2745.53	2279.29	1734603.99	14461815.10	39°49'16.4421"N	80°39'52.3849"W	3568.35	140.301	2.09	0.98	-1.85
10566.00	88.800	150.770	6932.36	3643.21	-2827.55	2327.16	1734651.83	14461733.11	39°49'15.6298"N	80°39'51.7755"W	3662.06	140.545	2.25	0.58	2.18
10661.00	88.250	148.450	6934.81	3738.02	-2909.46	2375.19	1734699.85	14461651.23	39°49'14.8185"N	80°39'51.1637"W	3755.87	140.773	2.51	-0.58	-2.44
10756.00	88.120	148.990	6937.82	3832.89	-2990.61	2424.50	1734749.13	14461570.11	39°49'14.0147"N	80°39'50.5358"W	3849.93	140.968	0.58	-0.14	0.57
10852.00	89.110	149.840	6940.14	3928.73	-3073.23	2473.33	1734797.95	14461487.52	39°49'13.1964"N	80°39'49.9139"W	3944.88	141.173	1.36	1.03	0.89
10947.00	89.320	150.390	6941.44	4023.51	-3155.59	2520.66	1734845.26	14461405.20	39°49'12.3807"N	80°39'49.3113"W	4038.75	141.382	0.62	0.22	0.58
11042.00	87.600	146.420	6943.99	4118.40	-3236.46	2570.40	1734894.98	14461324.36	39°49'11.5796"N	80°39'48.6777"W	4132.99	141.543	4.55	-1.81	-4.18
11137.00	88.150	151.500	6947.52	4213.20	-3317.78	2619.33	1734943.89	14461243.08	39°49'10.7742"N	80°39'48.0545"W	4227.12	141.709	5.37	0.58	5.35
11232.00	87.810	150.840	6950.87	4307.81	-3400.95	2665.11	1734989.66	14461159.94	39°49'9.9506"N	80°39'47.4718"W	4320.80	141.916	0.78	-0.36	-0.69
11327.00	88.000	150.460	6954.34	4402.48	-3483.70	2711.65	1735036.17	14461077.22	39°49'9.1311"N	80°39'46.8794"W	4414.66	142.103	0.45	0.20	-0.40
11422.00	87.440	148.620	6958.12	4497.25	-3565.52	2759.76	1735084.27	14460995.43	39°49'8.3207"N	80°39'46.2667"W	4508.79	142.260	2.02	-0.59	-1.94
11517.00	88.430	150.730	6961.54	4592.03	-3647.46	2807.70	1735132.18	14460913.52	39°49'7.5091"N	80°39'45.6564"W	4602.95	142.412	2.45	1.04	2.22
11611.00	88.980	151.200	6963.67	4685.70	-3729.63	2853.31	1735177.78	14460831.39	39°49'6.6954"N	80°39'45.0759"W	4695.90	142.583	0.77	0.59	0.50
11706.00	88.710	150.420	6965.58	4780.39	-3812.54	2899.63	1735224.08	14460748.50	39°49'5.8742"N	80°39'44.4862"W	4789.92	142.745	0.87	-0.28	-0.82
11801.00	88.680	149.710	6967.74	4875.17	-3894.85	2947.02	1735271.46	14460666.23	39°49'5.0591"N	80°39'43.8828"W	4884.14	142.887	0.75	-0.03	-0.75
11896.00	88.240	149.270	6970.30	4969.99	-3976.67	2995.23	1735319.65	14460584.44	39°49'4.2487"N	80°39'43.2689"W	4978.48	143.013	0.65	-0.46	-0.46
11990.00	88.460	149.290	6973.00	5063.83	-4057.44	3043.23	1735367.63	14460503.70	39°49'3.4487"N	80°39'42.6577"W	5071.89	143.129	0.24	0.23	0.02
12085.00	88.710	150.010	6975.35	5158.64	-4139.40	3091.22	1735415.60	14460421.78	39°49'2.6369"N	80°39'42.0467"W	5166.26	143.248	0.80	0.26	0.76

RECEIVED  
Office of Oil and Gas  
JUL 25 2014  
NY Department of  
Environmental Protection



# Actual Wellpath Report

Hudson S-6HM AWP Proj: 17126'  
Page 7 of 10



## REFERENCE WELLPATH IDENTIFICATION

Operator	EQT (TUG HILL OPERATING, LLC)	Well	Hudson S-6HM
Field	Marshall	API	47-051-02377-0000
Facility	Hudson	Wellbore	Hudson S-6HM AWB
Slot	Slot 06		

## WELLPATH DATA (203 stations)

MD [ft]	Inclination [°]	Azimuth [°]	TVD [ft]	Vert Sect [ft]	North [ft]	East [ft]	Grid East [US ft]	Grid North [US ft]	Latitude	Longitude	Closure Dist [ft]	Closure Dir [°]	DLS ["/100ft]	Build Rate ["/100ft]	Turn Rate ["/100ft]
12180.00	88.670	148.370	6977.52	5253.50	-4220.97	3139.86	1735464.22	14460340.24	39°49'1.8290"N	80°39'41.4272"W	5260.73	143.355	1.73	-0.04	-1.73
12275.00	89.690	152.740	6978.88	5348.21	-4303.66	3186.55	1735510.89	14460257.57	39°49'1.0100"N	80°39'40.8330"W	5354.96	143.483	4.72	1.07	4.60
12370.00	88.150	150.410	6980.67	5442.79	-4387.19	3231.76	1735556.08	14460174.08	39°49'0.1829"N	80°39'40.2577"W	5449.01	143.623	2.94	-1.62	-2.45
12465.00	88.430	149.910	6983.51	5537.54	-4469.56	3279.00	1735603.31	14460091.75	39°48'59.3671"N	80°39'39.6562"W	5543.36	143.735	0.60	0.29	-0.53
12560.00	89.100	149.640	6985.56	5632.35	-4551.62	3326.82	1735651.10	14460009.71	39°48'58.5543"N	80°39'39.0474"W	5637.82	143.837	0.76	0.71	-0.28
12654.00	88.060	149.240	6987.89	5726.18	-4632.54	3374.59	1735698.86	14459928.83	39°48'57.7528"N	80°39'37.8233"W	5731.34	143.928	1.19	-1.11	-0.43
12749.00	88.370	149.520	6990.84	5821.00	-4714.25	3422.96	1735747.20	14459847.15	39°48'56.9435"N	80°39'37.2081"W	5825.87	144.017	0.44	0.33	0.29
12844.00	88.800	149.330	6993.19	5915.84	-4796.02	3471.27	1735795.49	14459765.41	39°48'56.1336"N	80°39'37.8233"W	5920.43	144.104	0.49	0.45	-0.20
12939.00	88.980	148.430	6995.03	6010.73	-4877.33	3520.36	1735844.56	14459684.13	39°48'55.3282"N	80°39'36.5830"W	6015.09	144.179	0.97	0.19	-0.95
13033.00	89.690	152.460	6996.12	6104.46	-4959.08	3566.71	1735890.90	14459602.42	39°48'54.5186"N	80°39'35.9930"W	6108.51	144.275	4.35	0.76	4.29
13128.00	89.070	151.270	6997.15	6199.02	-5042.85	3611.50	1735935.68	14459518.68	39°48'53.6891"N	80°39'35.4230"W	6202.68	144.391	1.41	-0.65	-1.25
13223.00	88.060	147.920	6999.53	6293.82	-5124.74	3659.56	1735983.71	14459436.82	39°48'52.8779"N	80°39'34.8112"W	6297.25	144.470	3.68	-1.06	-3.53
13317.00	89.870	149.880	7001.23	6387.71	-5205.21	3708.10	1736032.24	14459356.38	39°48'52.0808"N	80°39'34.1930"W	6390.95	144.535	2.84	1.93	2.09
13412.00	88.670	149.200	7002.44	6482.55	-5287.09	3756.25	1736080.37	14459274.53	39°48'51.2698"N	80°39'33.5799"W	6485.58	144.608	1.45	-1.26	-0.72
13507.00	89.100	149.770	7004.29	6577.39	-5368.92	3804.48	1736128.58	14459192.74	39°48'50.4594"N	80°39'32.9659"W	6580.22	144.678	0.75	0.45	0.60
13602.00	89.130	149.240	7005.75	6672.24	-5450.77	3852.69	1736176.76	14459110.92	39°48'49.6487"N	80°39'32.3522"W	6674.88	144.747	0.56	0.03	-0.56
13697.00	88.890	149.830	7007.40	6767.07	-5532.64	3900.84	1736224.90	14459029.08	39°48'48.8378"N	80°39'31.7390"W	6769.54	144.814	0.67	-0.25	0.62
13792.00	88.520	147.840	7009.54	6861.96	-5613.90	3949.99	1736274.03	14458947.85	39°48'48.0328"N	80°39'31.1132"W	6864.28	144.869	2.13	-0.39	-2.09
13887.00	89.320	150.390	7011.33	6956.82	-5695.41	3998.74	1736322.77	14458866.38	39°48'47.2255"N	80°39'30.4924"W	6959.00	144.927	2.81	0.84	2.68
13982.00	88.390	149.480	7013.23	7051.62	-5777.61	4046.33	1736370.33	14458784.21	39°48'46.4113"N	80°39'29.8867"W	7053.62	144.995	1.37	-0.98	-0.96
14078.00	89.260	150.190	7015.20	7147.42	-5860.59	4094.56	1736418.54	14458701.26	39°48'45.5894"N	80°39'29.2727"W	7149.26	145.060	1.17	0.91	0.74
14173.00	89.040	149.990	7016.61	7242.21	-5942.93	4141.92	1736465.89	14458618.95	39°48'44.7739"N	80°39'28.6698"W	7243.89	145.125	0.31	-0.23	-0.21
14268.00	90.490	149.400	7017.00	7337.04	-6024.94	4189.86	1736513.80	14458536.97	39°48'43.9616"N	80°39'28.0596"W	7338.59	145.185	1.65	1.53	-0.62
14363.00	89.500	149.510	7017.01	7431.90	-6106.76	4238.14	1736562.06	14458455.19	39°48'43.1512"N	80°39'27.4449"W	7433.32	145.239	1.05	-1.04	0.12
14457.00	89.380	148.360	7017.93	7525.80	-6187.27	4286.64	1736610.55	14458374.70	39°48'42.3537"N	80°39'26.8273"W	7527.12	145.285	1.23	-0.13	-1.22
14552.00	88.820	148.710	7019.42	7620.72	-6268.29	4336.22	1736660.11	14458293.72	39°48'41.5512"N	80°39'26.1959"W	7621.96	145.326	0.70	-0.59	0.37
14647.00	90.150	150.020	7020.27	7715.58	-6350.03	4384.62	1736708.49	14458212.01	39°48'40.7416"N	80°39'25.5797"W	7716.72	145.375	1.97	1.40	1.38
14743.00	89.040	148.310	7020.95	7811.46	-6432.45	4433.83	1736757.68	14458129.62	39°48'39.9252"N	80°39'24.9532"W	7812.51	145.422	2.12	-1.16	-1.78
14838.00	89.840	152.210	7021.88	7906.21	-6514.92	4480.94	1736804.77	14458047.19	39°48'39.1084"N	80°39'24.3535"W	7907.15	145.480	4.19	0.84	4.11
14933.00	89.380	151.530	7022.53	8000.77	-6598.69	4525.73	1736849.54	14457963.45	39°48'38.2788"N	80°39'23.7837"W	8001.56	145.556	0.86	-0.48	-0.72

RECEIVED  
 Office of Oil and Gas  
 DEC 23 2014  
 WV Dept. of Environmental Protection



# Actual Wellpath Report

Hudson S-6HM AWP Proj: 17126'  
Page 8 of 10



## REFERENCE WELLPATH IDENTIFICATION

Operator	EQT (TUG HILL OPERATING, LLC)	Well	Hudson S-6HM
Field	Marshall	API	47-051-02377-0000
Facility	Hudson	Wellbore	Hudson S-6HM AWB
Slot	Slot 06		

## WELLPATH DATA (203 stations)

† = interpolated, ‡ = extrapolated station

MD [ft]	Inclination [°]	Azimuth [°]	TVD [ft]	Vert Sect [ft]	North [ft]	East [ft]	Grid East [US ft]	Grid North [US ft]	Latitude	Longitude	Closure Dist [ft]	Closure Dir [°]	DLS ["/100ft]	Build Rate ["/100ft]	Turn Rate ["/100ft]
15028.00	89.220	150.340	7023.69	8095.46	-6681.72	4571.88	1736895.67	14457880.45	39°48'37.4565"N	80°39'23.1965"W	8096.14	145.619	1.26	-0.17	-1.25
15123.00	89.410	149.510	7024.82	8190.27	-6763.93	4619.48	1736943.26	14457798.28	39°48'36.6423"N	80°39'22.5905"W	8190.87	145.669	0.90	0.20	-0.87
15218.00	89.290	150.020	7025.90	8285.10	-6846.00	4667.31	1736991.07	14457716.24	39°48'35.8294"N	80°39'21.9816"W	8285.62	145.715	0.55	-0.13	0.54
15313.00	89.590	149.230	7026.83	8379.94	-6927.95	4715.35	1737039.09	14457634.32	39°48'35.0177"N	80°39'21.3701"W	8380.40	145.760	0.89	0.32	-0.83
15408.00	89.500	149.850	7027.58	8474.79	-7009.84	4763.51	1737087.23	14457552.46	39°48'34.2066"N	80°39'20.7571"W	8475.19	145.802	0.66	-0.09	0.65
15503.00	90.480	150.040	7027.60	8569.60	-7092.06	4811.08	1737134.79	14457470.27	39°48'33.3922"N	80°39'20.1515"W	8569.94	145.848	1.05	1.03	0.20
15598.00	91.010	149.770	7026.37	8664.41	-7174.25	4858.72	1737182.40	14457388.11	39°48'32.5782"N	80°39'19.5452"W	8664.70	145.892	0.63	0.56	-0.28
15693.00	91.440	149.550	7024.33	8759.23	-7256.22	4906.69	1737230.36	14457306.18	39°48'31.7663"N	80°39'18.9344"W	8759.47	145.933	0.51	0.45	-0.23
15788.00	89.500	149.840	7023.56	8854.06	-7338.23	4954.63	1737278.27	14457224.20	39°48'30.9539"N	80°39'18.3243"W	8854.26	145.974	2.06	-2.04	0.31
15883.00	89.190	149.520	7024.64	8948.90	-7420.23	5002.58	1737326.21	14457142.23	39°48'30.1417"N	80°39'17.7138"W	8948.06	146.013	0.47	-0.33	-0.34
15978.00	89.930	150.230	7025.37	9043.71	-7502.40	5050.26	1737373.87	14457060.10	39°48'29.3279"N	80°39'17.1070"W	9043.84	146.053	1.08	0.78	0.75
16073.00	90.020	149.440	7025.41	9138.54	-7584.53	5097.99	1737421.58	14456977.99	39°48'28.5144"N	80°39'16.4994"W	9138.64	146.093	0.84	0.09	-0.83
16168.00	89.750	148.570	7025.60	9233.43	-7665.97	5146.92	1737470.49	14456896.59	39°48'27.7078"N	80°39'15.8765"W	9233.51	146.123	0.96	-0.28	-0.92
16263.00	91.440	149.190	7024.62	9328.33	-7747.29	5196.01	1737519.56	14456815.30	39°48'26.9022"N	80°39'15.2515"W	9328.40	146.151	1.89	1.78	0.65
16453.00	89.870	148.560	7022.44	9518.13	-7909.92	5294.21	1737617.73	14456652.74	39°48'25.2913"N	80°39'14.0012"W	9518.17	146.205	0.89	-0.83	-0.33
16548.00	89.220	148.130	7023.20	9613.07	-7990.78	5344.07	1737667.56	14456571.90	39°48'24.4902"N	80°39'13.3664"W	9613.10	146.226	0.82	-0.68	-0.45
16643.00	89.740	149.070	7024.06	9707.99	-8071.86	5393.56	1737717.03	14456490.85	39°48'23.6870"N	80°39'12.7363"W	9708.01	146.249	1.13	0.55	0.99
16738.00	88.020	148.910	7025.92	9802.87	-8153.27	5442.49	1737765.95	14456409.48	39°48'22.8807"N	80°39'12.1133"W	9802.88	146.276	1.82	-1.81	-0.17
16833.00	88.540	148.700	7028.77	9897.74	-8234.49	5491.67	1737815.11	14456328.29	39°48'22.0761"N	80°39'11.4871"W	9897.75	146.300	0.59	0.55	-0.22
16928.00	89.130	148.770	7030.70	9992.64	-8315.68	5540.97	1737864.39	14456247.13	39°48'21.2718"N	80°39'10.8595"W	9992.64	146.323	0.63	0.62	0.07
17023.00	88.790	148.890	7032.43	10087.54	-8396.95	5590.13	1737913.53	14456165.89	39°48'20.4668"N	80°39'10.2337"W	10087.54	146.347	0.38	-0.36	0.13
17101.00	89.160	149.440	7033.82	10165.43	-8463.92	5630.10	1737953.49	14456098.95	39°48'19.8035"N	80°39'9.7248"W	10165.43	146.369	0.85	0.47	0.71
17126.00†	89.160	149.440	7034.19	10190.39	-8485.44	5642.81	1737966.19	14456077.44	39°48'19.5903"N	80°39'9.5630"W	10190.39	146.376	0.00	0.00	0.00

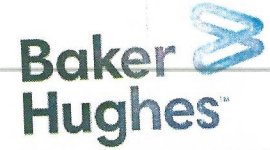
RECEIVED  
Office of Oil and Gas  
JUL 23 2014  
WV Department of  
Environmental Protection





# Actual Wellpath Report

Hudson S-6HM AWP Proj: 17126'  
Page 9 of 10



## REFERENCE WELLPATH IDENTIFICATION

Operator	EQT (TUG HILL OPERATING, LLC)	Well	Hudson S-6HM
Field	Marshall	API	47-051-02377-0000
Facility	Hudson	Wellbore	Hudson S-6HM AWB
Slot	Slot 06		

HOLE & CASING SECTIONS - Ref Wellbore: Hudson S-6HM AWB Ref Wellpath: Hudson S-6HM AWP Proj: 17126'										
String/Diameter	Start MD [ft]	End MD [ft]	Interval [ft]	Start TVD [ft]	End TVD [ft]	Start N/S [ft]	Start E/W [ft]	End N/S [ft]	End E/W [ft]	
30in Conductor	28.00	148.00	120.00	28.00	148.00	0.00	0.00	-0.14	-0.22	
17.5in Open Hole	148.00	1127.00	979.00	148.00	1126.95	-0.14	-0.22	3.13	-4.06	
13.375in Casing Surface	28.00	1127.00	1099.00	28.00	1126.95	0.00	0.00	3.13	-4.06	
12.25in Open Hole	1127.00	2427.00	1300.00	1126.95	2426.83	3.13	-4.06	7.59	2.51	
9.625in Casing Intermediate	28.00	2427.00	2399.00	28.00	2426.83	0.00	0.00	7.59	2.51	
8.75in Open Hole	2427.00	5092.00	2665.00	2426.83	5062.94	7.59	2.51	351.81	152.02	
8.5in Open Hole	5092.00	17126.00	12034.00	5062.94	7034.19	351.81	152.02	-8485.44	5642.81	
5.5in Casing Production	28.00	17126.00	17098.00	28.00	7034.19	0.00	0.00	-8485.44	5642.81	

TARGETS								
Name	TVD [ft]	North [ft]	East [ft]	Grid East [US ft]	Grid North [US ft]	Latitude	Longitude	Shape
Hudson S-6HM LP Rev-1	6820.00	66.60	605.08	1732930.43	14464626.12	39°49'44.2946"N	80°40'13.7092"W	point
Hudson S-6HM BHL Rev-1	7079.80	-8484.63	5646.10	1737969.47	14456078.25	39°48'19.5982"N	80°39'9.5209"W	point

WELLPATH COMPOSITION - Ref Wellbore: Hudson S-6HM AWB Ref Wellpath: Hudson S-6HM AWP Proj: 17126'					Wellbore	Survey Date
Start MD [ft]	End MD [ft]	Positional Uncertainty Model	Log Name/Comment			
28.00	1078.00	OWSG MWD rev2 + HRGM	01 MWD <17-1/2"> (184'-1078')		Hudson S-6HM AWB	12/9/2023
1078.00	2403.00	OWSG MWD rev2 + HRGM	02 SDI MWD <12-1/4"> (1078')(1177'-2403')		Hudson S-6HM AWB	2/9/2024
2403.00	5013.00	OWSG MWD rev2 + HRGM	03 SDI MWD <8-3/4"> (2403')(2454'-5013')		Hudson S-6HM AWB	2/9/2024
5013.00	17126.00	OWSG MWD rev2 + IFR1 + Sag + Multi-Station Correction	04 BH AT Curve+SuperiorQC IFR1+Sag+FDIR <8-1/2"> (5013')(5060'-17101')		Hudson S-6HM AWB	2/9/2024

RECEIVED  
 Office of Oil and Gas  
 DEC 23 2024  
 WV Department of  
 Environmental Protection



# Actual Wellpath Report

Hudson S-6HM AWP Proj: 17126'  
Page 10 of 10



REFERENCE WELLPATH IDENTIFICATION			
Operator	EQT (TUG HILL OPERATING, LLC)	Well	Hudson S-6HM
Field	Marshall	API	47-051-02377-0000
Facility	Hudson	Wellbore	Hudson S-6HM AWB
Slot	Slot 06		

## COMMENTS

### Wellpath general comments

API: 47-051-02377-0000

BH Job #: 112078149

Rig: Patterson 294

Duration: 2/9/2024-2/12/2024

MWD <17-1/2"> (184'-1078')

SDI MWD <12-1/4"> (1078')(1177'-2403')

SDI MWD <8-3/4"> (2403')(2454'-5013')

BH AT Curve+SuperiorQC IFR1+Sag+FDIR <8-1/2"> (5013')(5060'-17101')

Projected MD at TD: 17126'

RECEIVED  
Office of Oil and Gas  
DEC 23 2024  
WV Department of  
Environmental Protection

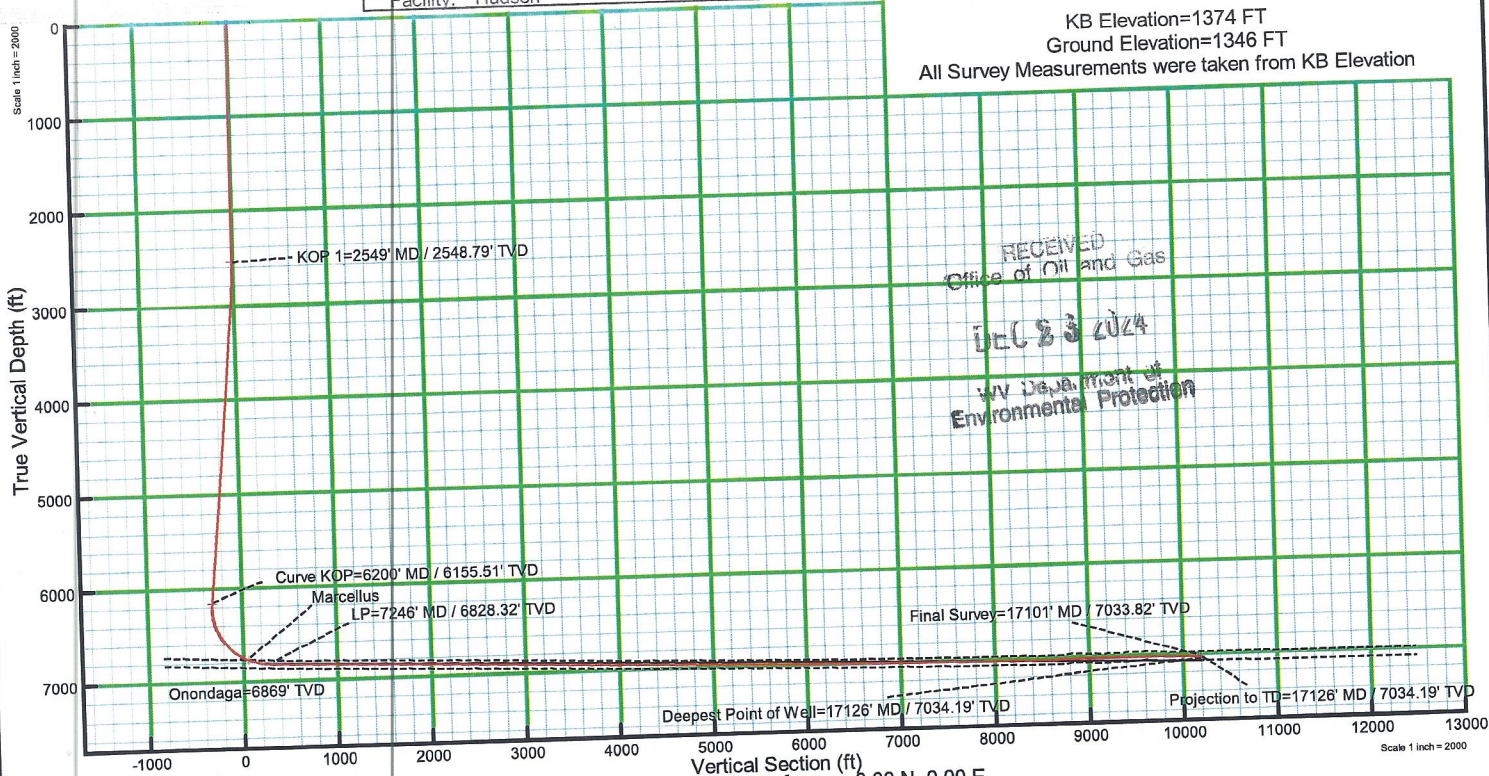


# EQT (TUG HILL OPERATING, LLC)

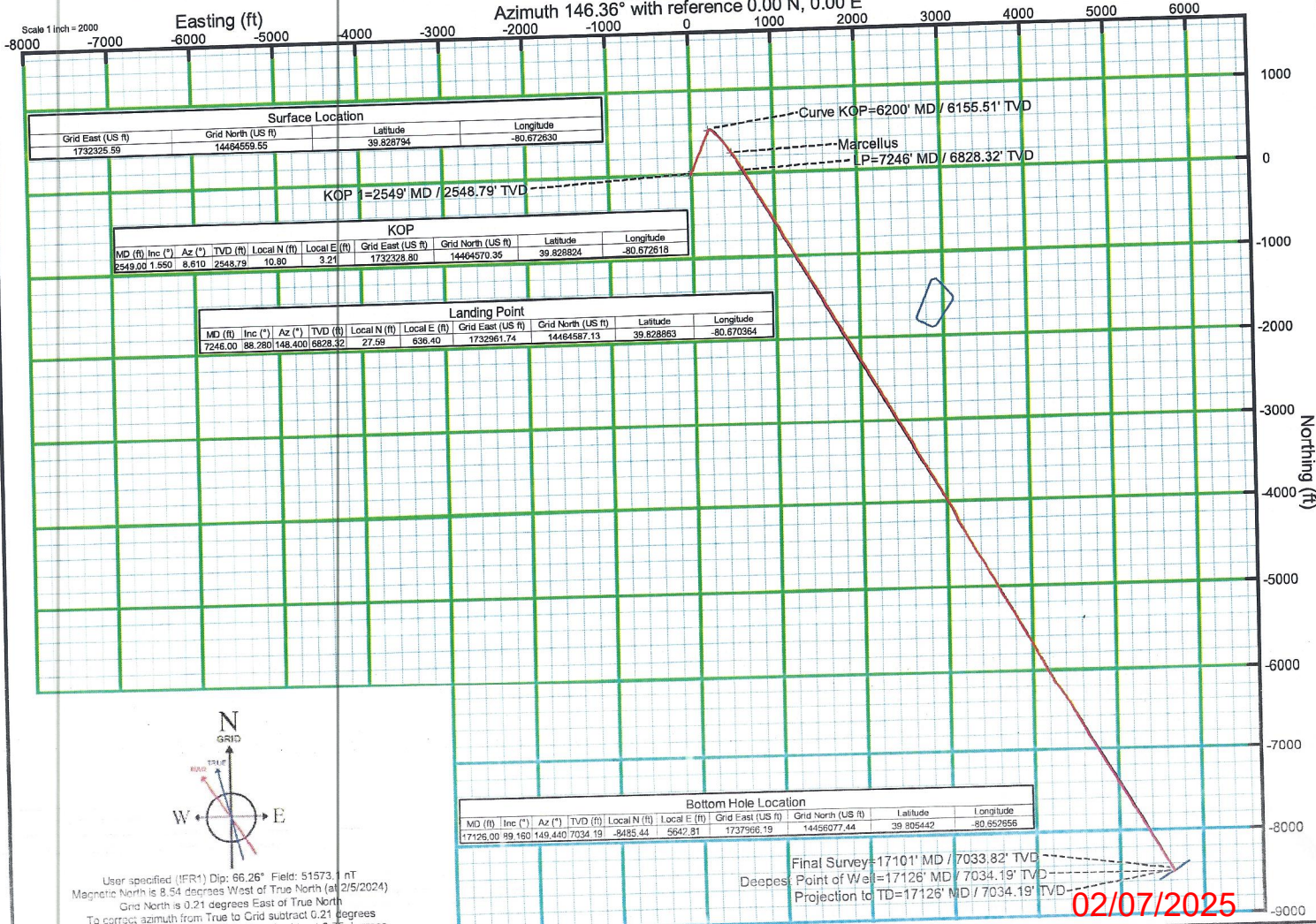
Location: Marshall County, WV Slot: Slot 06  
 Field: Marshall Well: Hudson S-6HM  
 Facility: Hudson Wellbore: Hudson S-6HM AWB



KB Elevation=1374 FT  
 Ground Elevation=1346 FT  
 All Survey Measurements were taken from KB Elevation



RECEIVED  
 Office of Oil and Gas  
 DEC 23 2024  
 WV Department of  
 Environmental Protection



Surface Location			
Grid East (US ft)	Grid North (US ft)	Latitude	Longitude
1732325.59	14464559.55	39.828794	-80.572630

KOP									
MD (ft)	Inc (°)	Az (°)	TVD (ft)	Local N (ft)	Local E (ft)	Grid East (US ft)	Grid North (US ft)	Latitude	Longitude
2549.00	1.550	8.610	2548.79	10.80	3.21	1732328.80	14464570.36	39.828804	-80.572618

Landing Point									
MD (ft)	Inc (°)	Az (°)	TVD (ft)	Local N (ft)	Local E (ft)	Grid East (US ft)	Grid North (US ft)	Latitude	Longitude
7246.00	88.280	148.400	6828.32	27.59	636.40	1732361.74	14464587.13	39.828863	-80.570364

Bottom Hole Location									
MD (ft)	Inc (°)	Az (°)	TVD (ft)	Local N (ft)	Local E (ft)	Grid East (US ft)	Grid North (US ft)	Latitude	Longitude
17126.00	99.160	149.440	7034.19	-8485.44	5642.81	1737966.19	14456077.44	39.805442	-80.652956

User specified (IFR<sup>1</sup>) Dip: 86.26° Field: 51573.1 nT  
 Magnetic North is 8.54 degrees West of True North (as of 2/5/2024)  
 Grid North is 0.21 degrees East of True North  
 To correct azimuth from True to Grid subtract 0.21 degrees  
 To correct azimuth from Magnetic to Grid subtract 8.75 degrees

Final Survey=17101' MD / 7033.82' TVD  
 Deepest Point of Well=17126' MD / 7034.19' TVD  
 Projection to TD=17126' MD / 7034.19' TVD

02107/2025