



Actual Wellpath Report

Hudson S-8HM AWP Proj: 18533'

Page 1 of 10



REFERENCE WELLPATH IDENTIFICATION

Operator	EQT (TUG HILL OPERATING, LLC)	Well	Hudson S-8HM
Field	Marshall	API	47-051-02379-0000
Facility	Hudson	Wellbore	Hudson S-8HM AWB
Slot	Slot 08		

REPORT SETUP INFORMATION

Projection System	NAD83 / UTM Zone 17 North, US feet	Software System	WellArchitect® 6.0
North Reference	Grid	User	Edsaryar
Scale	0.999610	Report Generated	2/5/2024 at 11:23:34 AM
Convergence at slot	0.21° East	Database	WA_MPL_EASTERNUS_Defn

WELLPATH LOCATION

	Local coordinates		Grid coordinates		Geographic coordinates	
	North[ft]	East[ft]	Easting[US ft]	Northing[US ft]	Latitude	Longitude
Slot Location	22.32	22.75	1732326.39	14464571.46	39°49'43.7761"N	80°40'21.4572"W
Facility Reference Pt			1732303.65	14464549.15	39°49'43.5564"N	80°40'21.7498"W
Field Reference Pt			1920470.12	14528304.49	40°00'0.0000"N	80°00'0.0000"W

WELLPATH DATUM

Calculation method	Minimum curvature	Patterson 294 (RKB) to Facility Vertical Datum	1374.00ft
Horizontal Reference Pt	Slot	Patterson 294 (RKB) to Mean Sea Level	1374.00ft
Vertical Reference Pt	Patterson 294 (RKB)	Patterson 294 (RKB) to Ground Level at Slot (Slot 08)	28.00ft
MD Reference Pt	Patterson 294 (RKB)	Section Origin	N 0.00, E 0.00 ft
Field Vertical Reference	Mean Sea Level	Section Azimuth	134.81°

RECEIVED
 Office of Oil and Gas
 DEC 28 2024
 WV Department of
 Environmental Protection



Actual Wellpath Report

Hudson S-8HM AWP Proj: 18533'
Page 2 of 10



REFERENCE WELLPATH IDENTIFICATION

Operator	EQT (TUG HILL OPERATING, LLC)	Well	Hudson S-8HM
Field	Marshall	API	47-051-02379-0000
Facility	Hudson	Wellbore	Hudson S-8HM AWB
Slot	Slot 08		

WELLPATH DATA (200 stations) † = interpolated, ‡ = extrapolated station

MD [ft]	Inclination [°]	Azimuth [°]	TVD [ft]	Vert Sect [ft]	North [ft]	East [ft]	Grid East [US ft]	Grid North [US ft]	Latitude	Longitude	Closure Dist [ft]	Closure Dir [°]	DLS [°/100ft]	Build Rate [°/100ft]	Turn Rate [°/100ft]
0.00†	0.000	19.730	0.00	0.00	0.00	0.00	1732326.39	14464571.46	39°49'43.7761"N	80°40'21.4572"W	0.00	0.000	0.00	0.00	0.00
28.00	0.000	19.730	28.00	0.00	0.00	0.00	1732326.39	14464571.46	39°49'43.7761"N	80°40'21.4572"W	0.00	0.000	0.00	0.00	0.00
224.00	0.140	19.730	224.00	-0.10	0.23	0.08	1732326.47	14464571.69	39°49'43.7783"N	80°40'21.4562"W	0.24	19.730	0.07	0.07	0.00
315.00	0.070	194.430	315.00	-0.12	0.28	0.10	1732326.49	14464571.74	39°49'43.7788"N	80°40'21.4558"W	0.30	20.726	0.23	-0.08	191.98
400.00	0.290	10.410	400.00	-0.22	0.44	0.13	1732326.52	14464571.90	39°49'43.7804"N	80°40'21.4555"W	0.46	16.603	0.42	0.26	207.04
487.00	0.470	55.550	487.00	-0.27	0.86	0.46	1732326.85	14464572.32	39°49'43.7846"N	80°40'21.4512"W	0.97	28.488	0.39	0.21	51.89
595.00	0.240	26.250	595.00	-0.26	1.31	0.93	1732327.32	14464572.77	39°49'43.7890"N	80°40'21.4452"W	1.61	35.379	0.26	-0.21	-27.13
682.00	0.450	11.520	681.99	-0.51	1.81	1.08	1732327.47	14464573.27	39°49'43.7939"N	80°40'21.4433"W	2.10	30.826	0.26	0.24	-16.93
768.00	0.230	46.610	767.99	-0.69	2.26	1.27	1732327.66	14464573.72	39°49'43.7984"N	80°40'21.4408"W	2.59	29.395	0.34	-0.26	40.80
855.00	0.370	26.050	854.99	-0.77	2.63	1.52	1732327.91	14464574.09	39°49'43.8020"N	80°40'21.4376"W	3.04	30.060	0.20	0.16	-23.63
921.00	0.280	359.030	920.99	-0.96	2.98	1.61	1732328.00	14464574.44	39°49'43.8055"N	80°40'21.4364"W	3.39	28.403	0.27	-0.14	-40.94
1026.00	0.200	319.960	1025.99	-1.32	3.38	1.49	1732327.88	14464574.84	39°49'43.8094"N	80°40'21.4379"W	3.69	23.802	0.17	-0.08	-37.21
1112.00	0.260	9.580	1111.99	-1.59	3.69	1.43	1732327.82	14464575.14	39°49'43.8125"N	80°40'21.4387"W	3.95	21.153	0.23	0.07	57.70
1198.00	0.440	318.270	1197.99	-2.03	4.13	1.24	1732327.63	14464575.58	39°49'43.8168"N	80°40'21.4411"W	4.31	16.718	0.40	0.21	-59.66
1285.00	0.680	290.710	1284.98	-2.83	4.56	0.53	1732326.92	14464576.02	39°49'43.8211"N	80°40'21.4501"W	4.59	6.680	0.41	0.28	-31.68
1345.00	0.530	305.100	1344.98	-3.43	4.84	-0.03	1732326.36	14464576.30	39°49'43.8240"N	80°40'21.4573"W	4.84	359.688	0.35	-0.25	23.98
1399.00	1.520	320.700	1398.97	-4.39	5.54	-0.68	1732325.71	14464577.00	39°49'43.8309"N	80°40'21.4657"W	5.58	352.958	1.89	1.83	28.89
1494.00	0.880	217.360	1493.96	-5.55	5.94	-1.93	1732324.47	14464577.39	39°49'43.8348"N	80°40'21.4816"W	6.24	342.029	2.03	-0.67	-108.78
1589.00	2.350	153.130	1588.92	-3.61	3.62	-1.49	1732324.90	14464575.08	39°49'43.8119"N	80°40'21.4761"W	3.91	337.650	2.23	1.55	-67.61
1683.00	4.210	119.780	1682.77	1.56	0.18	2.38	1732328.77	14464571.64	39°49'43.7778"N	80°40'21.4267"W	2.39	85.564	2.76	1.98	-35.48
1778.00	4.940	91.220	1777.48	7.89	-1.63	9.50	1732335.88	14464569.83	39°49'43.7596"N	80°40'21.3356"W	9.64	99.768	2.49	0.77	-30.06
1873.00	6.760	70.420	1871.99	13.27	0.15	18.86	1732345.24	14464571.61	39°49'43.7769"N	80°40'21.2155"W	18.86	89.537	2.91	1.92	-21.89
1967.00	7.330	58.230	1965.29	17.05	5.16	29.17	1732355.54	14464576.62	39°49'43.8261"N	80°40'21.0831"W	29.62	79.960	1.70	0.61	-12.97
2062.00	7.740	42.850	2059.48	18.24	13.05	38.67	1732365.04	14464584.50	39°49'43.9036"N	80°40'20.9609"W	40.81	71.358	2.16	0.43	-16.19
2157.00	8.170	29.320	2153.57	16.22	23.62	46.33	1732372.70	14464595.07	39°49'44.0079"N	80°40'20.8623"W	52.00	62.983	2.02	0.45	-14.24
2251.00	8.650	23.600	2246.56	11.88	35.92	52.43	1732378.80	14464607.37	39°49'44.1292"N	80°40'20.7835"W	63.55	55.581	1.03	0.51	-6.09
2347.00	8.920	24.240	2341.44	6.65	49.33	58.37	1732384.74	14464620.77	39°49'44.2615"N	80°40'20.7067"W	76.42	49.802	0.30	0.28	0.67
2413.00	8.560	22.030	2406.67	2.95	58.54	62.32	1732388.68	14464629.98	39°49'44.3524"N	80°40'20.6557"W	85.50	46.788	0.75	-0.55	-3.35
2454.00	7.910	20.140	2447.25	0.59	64.02	64.43	1732390.80	14464635.46	39°49'44.4063"N	80°40'20.6283"W	90.83	45.183	1.72	-1.59	-4.61
2549.00	9.120	29.020	2541.20	-4.19	76.74	70.34	1732396.70	14464648.17	39°49'44.5320"N	80°40'20.5521"W	104.10	42.506	1.88	1.27	9.35

RECEIVED
 Office of Oil and Gas
 DEC 29 2024
 WV Department of Environmental Protection



Actual Wellpath Report

Hudson S-8HM AWP Proj: 18533'

Page 3 of 10



REFERENCE WELLPATH IDENTIFICATION

Operator	EQT (TUG HILL OPERATING, LLC)	Well	Hudson S-8HM
Field	Marshall	API	47-051-02379-0000
Facility	Hudson	Wellbore	Hudson S-8HM AWB
Slot	Slot 08		

WELLPATH DATA (200 stations)

MD [ft]	Inclination [°]	Azimuth [°]	TVD [ft]	Vert Sect [ft]	North [ft]	East [ft]	Grid East [US ft]	Grid North [US ft]	Latitude	Longitude	Closure Dist [ft]	Closure Dir [°]	DLS [°/100ft]	Build Rate [°/100ft]	Turn Rate [°/100ft]
2644.00	11.200	29.220	2634.71	-8.71	91.38	78.49	1732404.85	14464662.80	39°49'44.6763"N	80°40'20.4468"W	120.46	40.662	2.19	2.19	0.21
2739.00	10.480	25.920	2728.01	-13.99	107.20	86.77	1732413.13	14464678.62	39°49'44.8324"N	80°40'20.3399"W	137.92	38.988	1.00	-0.76	-3.47
2834.00	10.870	27.780	2821.37	-19.41	122.90	94.73	1732421.08	14464694.31	39°49'44.9872"N	80°40'20.2373"W	155.17	37.623	0.55	0.41	1.96
2928.00	11.740	27.910	2913.54	-24.79	139.19	103.33	1732429.68	14464710.60	39°49'45.1480"N	80°40'20.1262"W	173.36	36.589	0.93	0.93	0.14
3023.00	10.860	24.520	3006.70	-30.70	155.88	111.57	1732437.92	14464727.28	39°49'45.3125"N	80°40'20.0198"W	191.69	35.594	1.16	-0.93	-3.57
3118.00	10.560	24.030	3100.05	-36.89	171.97	118.83	1732445.17	14464743.36	39°49'45.4713"N	80°40'19.9260"W	209.03	34.644	0.33	-0.32	-0.52
3213.00	10.890	23.840	3193.39	-43.19	188.13	126.00	1732452.34	14464759.51	39°49'45.6307"N	80°40'19.8333"W	226.43	33.813	0.35	0.35	-0.20
3308.00	13.270	27.250	3286.28	-49.69	206.03	134.62	1732460.96	14464777.41	39°49'45.8074"N	80°40'19.7220"W	246.12	33.161	2.61	2.51	3.59
3403.00	14.840	29.160	3378.43	-56.27	226.35	145.54	1732471.88	14464797.72	39°49'46.0078"N	80°40'19.5810"W	269.11	32.741	1.72	1.65	2.01
3497.00	16.610	30.820	3468.91	-62.76	248.40	158.29	1732484.62	14464819.77	39°49'46.2252"N	80°40'19.4166"W	294.55	32.507	1.94	1.88	1.77
3592.00	20.040	30.160	3559.08	-70.16	274.14	173.43	1732499.75	14464845.50	39°49'46.4791"N	80°40'19.2213"W	324.40	32.319	3.62	3.61	-0.69
3687.00	24.510	30.660	3646.97	-79.10	305.18	191.67	1732517.98	14464876.53	39°49'46.7852"N	80°40'18.9861"W	360.38	32.131	4.71	4.71	0.53
3781.00	27.740	31.010	3731.35	-89.09	340.72	212.89	1732539.19	14464912.04	39°49'47.1356"N	80°40'18.7125"W	401.76	31.998	3.44	3.44	0.37
3876.00	30.850	30.120	3814.19	-100.54	380.74	236.51	1732562.80	14464952.06	39°49'47.5303"N	80°40'18.4078"W	448.22	31.847	3.31	3.27	-0.94
3971.00	33.120	28.580	3894.77	-113.98	424.61	261.15	1732587.44	14464995.90	39°49'47.9629"N	80°40'18.0899"W	498.49	31.593	2.54	2.39	-1.62
4065.00	35.570	27.390	3972.37	-129.34	471.45	286.02	1732612.29	14465042.72	39°49'48.4248"N	80°40'17.7690"W	551.42	31.244	2.70	2.61	-1.27
4160.00	37.320	26.710	4048.79	-146.56	521.71	311.67	1732637.94	14465092.96	39°49'48.9206"N	80°40'17.4377"W	607.72	30.855	1.89	1.84	-0.72
4254.00	40.320	26.580	4122.02	-164.93	574.37	338.09	1732664.35	14465145.61	39°49'49.4401"N	80°40'17.0966"W	666.49	30.483	3.19	3.19	-0.14
4349.00	43.250	27.690	4192.85	-184.13	630.69	366.98	1732693.22	14465201.90	39°49'49.9956"N	80°40'16.7237"W	729.69	30.194	3.18	3.08	1.17
4444.00	43.000	28.800	4262.19	-202.65	687.90	397.71	1732723.94	14465259.09	39°49'50.5599"N	80°40'16.3271"W	794.59	30.034	0.84	-0.26	1.17
4539.00	40.800	26.510	4332.90	-221.33	744.07	427.17	1732753.40	14465315.24	39°49'51.1139"N	80°40'15.9468"W	857.97	29.860	2.82	-2.32	-2.41
4633.00	39.170	26.560	4404.92	-240.27	798.11	454.16	1732780.37	14465369.25	39°49'51.6470"N	80°40'15.5984"W	918.28	29.642	1.73	-1.73	0.05
4728.00	38.430	30.460	4478.97	-256.99	850.40	482.54	1732808.74	14465421.53	39°49'52.1627"N	80°40'15.2320"W	977.77	29.572	2.69	-0.78	4.11
4823.00	38.380	28.990	4553.42	-272.35	901.65	511.80	1732837.99	14465472.75	39°49'52.6681"N	80°40'14.8546"W	1036.78	29.581	0.96	-0.05	-1.55
4918.00	40.630	27.600	4626.71	-289.54	954.86	540.43	1732866.61	14465525.95	39°49'53.1930"N	80°40'14.4851"W	1097.19	29.509	2.54	2.37	-1.46
5013.00	43.440	28.190	4697.26	-308.04	1011.07	570.20	1732896.36	14465582.14	39°49'53.7474"N	80°40'14.1009"W	1160.77	29.421	2.99	2.96	0.62
5108.00	44.120	27.830	4765.85	-327.04	1069.10	601.06	1732927.22	14465640.14	39°49'54.3198"N	80°40'13.7025"W	1226.48	29.345	0.76	0.72	-0.38
5203.00	42.880	26.010	4834.77	-347.11	1127.40	630.68	1732956.82	14465698.42	39°49'54.8948"N	80°40'13.3202"W	1291.81	29.223	1.86	-1.31	-1.92
5298.00	41.110	23.600	4905.37	-368.83	1185.08	657.36	1732983.49	14465756.07	39°49'55.4638"N	80°40'12.9754"W	1355.18	29.017	2.52	-1.86	-2.54
5393.00	39.570	25.350	4977.78	-390.21	1241.04	682.82	1733008.94	14465812.02	39°49'56.0160"N	80°40'12.6464"W	1416.49	28.820	2.01	-1.62	1.84

WV Department of
 Environmental Protection
 DEC 23 2024
 Office of Oil and Gas



Actual Wellpath Report

Hudson S-8HM AWP Proj: 18533'
Page 4 of 10



REFERENCE WELLPATH IDENTIFICATION

Operator	EQT (TUG HILL OPERATING, LLC)	Well	Hudson S-8HM
Field	Marshall	API	47-051-02379-0000
Facility	Hudson	Wellbore	Hudson S-8HM AWB
Slot	Slot 08		

WELLPATH DATA (200 stations)

MD [ft]	Inclination [°]	Azimuth [°]	TVD [ft]	Vert Sect [ft]	North [ft]	East [ft]	Grid East [US ft]	Grid North [US ft]	Latitude	Longitude	Closure Dist [ft]	Closure Dir [°]	DLS [°/100ft]	Build Rate [°/100ft]	Turn Rate [°/100ft]
5488.00	39.860	29.950	5050.88	-408.10	1294.78	710.98	1733037.09	14465865.73	39°49'56.5460"N	80°40'12.2829"W	1477.14	28.772	3.11	0.31	4.84
5583.00	40.050	31.210	5123.70	-423.10	1347.30	742.02	1733068.12	14465918.23	39°49'57.0639"N	80°40'11.8826"W	1538.12	28.844	0.87	0.20	1.33
5678.00	41.600	30.290	5195.59	-438.19	1400.68	773.76	1733099.85	14465971.59	39°49'57.5902"N	80°40'11.4731"W	1600.19	28.917	1.75	1.63	-0.97
5773.00	42.810	29.940	5265.95	-454.38	1455.88	805.78	1733131.86	14466026.77	39°49'58.1346"N	80°40'11.0601"W	1663.99	28.963	1.30	1.27	-0.37
5868.00	42.950	30.080	5335.57	-470.90	1511.86	838.11	1733164.17	14466082.72	39°49'59.2354"N	80°40'10.2457"W	1728.63	29.002	0.18	0.15	0.15
5963.00	41.110	27.790	5406.14	-488.27	1567.50	868.90	1733194.95	14466138.35	39°49'59.7685"N	80°40'9.8914"W	1792.22	29.001	2.52	-1.94	-2.41
6057.00	39.200	26.030	5477.98	-506.88	1621.54	896.35	1733222.39	14466192.36	39°50'0.3013"N	80°40'9.5387"W	1852.79	28.933	2.36	-2.03	-1.87
6152.00	39.960	27.600	5551.20	-525.57	1675.55	923.66	1733249.69	14466246.36	39°50'0.8301"N	80°40'9.1572"W	1913.27	28.866	1.32	0.80	1.65
6247.00	40.320	30.130	5623.83	-542.39	1729.17	953.22	1733279.24	14466299.96	39°50'1.3494"N	80°40'8.7623"W	1974.51	28.866	1.76	0.38	2.66
6342.00	39.440	30.220	5696.73	-557.78	1781.83	983.84	1733309.84	14466352.59	39°50'1.8556"N	80°40'8.3733"W	2035.40	28.905	0.93	-0.93	0.09
6437.00	38.180	30.640	5770.76	-572.57	1833.17	1013.99	1733339.98	14466403.91	39°50'2.3730"N	80°40'8.0002"W	2094.92	28.949	1.35	-1.33	0.44
6532.00	40.030	27.160	5844.48	-589.02	1885.63	1042.91	1733368.89	14466456.35	39°50'2.9189"N	80°40'7.6443"W	2154.82	28.946	3.02	1.95	-3.66
6627.00	41.180	25.790	5916.61	-608.48	1940.97	1070.46	1733396.43	14466511.67	39°50'3.4696"N	80°40'7.2827"W	2216.59	28.877	1.53	1.21	-1.44
6722.00	41.040	27.490	5988.19	-627.96	1996.80	1098.47	1733424.42	14466567.48	39°50'4.0199"N	80°40'6.9098"W	2279.00	28.816	1.19	-0.15	1.79
6817.00	41.760	27.250	6059.45	-646.79	2052.59	1127.35	1733453.29	14466623.25	39°50'4.3858"N	80°40'6.6579"W	2341.80	28.777	0.78	0.76	-0.25
6879.00	43.320	28.240	6105.13	-659.08	2089.69	1146.86	1733472.81	14466660.33	39°50'4.8723"N	80°40'6.3264"W	2383.71	28.759	2.74	2.52	1.60
6962.00	40.820	26.730	6166.74	-675.63	2139.01	1172.54	1733498.47	14466709.63	39°50'5.3808"N	80°40'5.9163"W	2439.31	28.730	3.25	-3.01	-1.82
7057.00	38.710	36.810	6239.83	-689.41	2190.58	1204.34	1733530.26	14466761.18	39°50'5.7877"N	80°40'5.3776"W	2499.82	28.801	7.13	-2.22	10.61
7152.00	38.580	53.960	6314.25	-688.83	2231.91	1246.22	1733572.12	14466802.50	39°50'6.0552"N	80°40'4.6992"W	2556.27	29.177	11.25	-0.14	18.05
7248.00	38.720	71.410	6389.45	-670.58	2259.18	1299.04	1733624.92	14466829.75	39°50'6.1642"N	80°40'3.9510"W	2606.03	29.899	11.33	0.15	18.18
7343.00	39.290	86.670	6463.44	-637.12	2270.42	1357.36	1733683.22	14466840.99	39°50'6.1218"N	80°40'3.1640"W	2645.23	30.873	10.11	0.60	16.06
7438.00	41.980	100.530	6535.68	-590.69	2266.36	1418.77	1733744.60	14466836.93	39°50'5.9303"N	80°40'2.3454"W	2673.81	32.047	9.90	2.83	14.59
7532.00	48.950	112.100	6601.68	-531.85	2247.22	1482.70	1733808.51	14466817.80	39°50'5.5822"N	80°40'1.4891"W	2692.29	33.417	11.47	7.41	12.31
7627.00	56.820	122.530	6659.06	-459.72	2212.25	1549.63	1733875.42	14466782.84	39°50'5.1209"N	80°40'0.6480"W	2701.00	35.010	12.04	8.28	10.98
7721.00	61.200	127.780	6707.47	-380.32	2165.82	1615.42	1733941.17	14466736.43	39°50'4.5721"N	80°39'59.8127"W	2701.91	36.718	6.68	4.66	5.59
7817.00	65.160	132.590	6750.80	-294.98	2110.52	1680.79	1734006.52	14466681.15	39°50'3.9529"N	80°39'59.0315"W	2698.03	38.533	6.08	4.12	5.01
7911.00	71.980	138.430	6785.15	-207.58	2048.10	1741.96	1734067.67	14466618.75	39°50'3.2335"N	80°39'58.3104"W	2688.71	40.382	9.27	7.26	6.21
8006.00	79.850	145.630	6808.28	-116.32	1975.51	1798.49	1734124.17	14466546.19	39°50'2.4461"N	80°39'57.6684"W	2671.55	42.315	11.07	8.28	7.58
8101.00	84.890	149.610	6820.89	-24.56	1896.02	1848.87	1734174.54	14466466.74	39°50'1.6387"N	80°39'57.0563"W	2648.25	44.279	6.74	5.31	4.19
8196.00	84.980	149.350	6829.28	66.99	1814.50	1896.93	1734222.57	14466385.25			2625.02	46.272	0.29	0.09	-0.27

PREPARED BY
 Office of Oil and Gas
 DEC 23 2024
 WV Department of Environmental Protection



Actual Wellpath Report

Hudson S-8HM AWP Proj: 18533'

Page 5 of 10



REFERENCE WELLPATH IDENTIFICATION

Operator	EQT (TUG HILL OPERATING, LLC)	Well	Hudson S-8HM
Field	Marshall	API	47-051-02379-0000
Facility	Hudson	Wellbore	Hudson S-8HM AWB
Slot	Slot 08		

WELLPATH DATA (200 stations)

MD [ft]	Inclination [°]	Azimuth [°]	TVD [ft]	Vert Sect [ft]	North [ft]	East [ft]	Grid East [US ft]	Grid North [US ft]	Latitude	Longitude	Closure Dist [ft]	Closure Dir [°]	DLS [°/100ft]	Build Rate [°/100ft]	Turn Rate [°/100ft]
8291.00	88.620	149.610	6834.58	158.73	1732.81	1945.09	1734270.72	14466303.59	39°50'0.8295"N	80°39'56.4428"W	2604.99	48.303	3.84	3.83	0.27
8386.00	88.500	149.090	6836.97	250.66	1651.10	1993.50	1734319.11	14466221.92	39°50'0.0203"N	80°39'55.8261"W	2588.47	50.367	0.56	-0.13	-0.55
8481.00	88.410	149.270	6839.53	342.65	1569.55	2042.16	1734367.75	14466140.39	39°49'59.2126"N	80°39'55.2064"W	2575.63	52.455	0.21	-0.09	0.19
8576.00	88.410	149.130	6842.17	434.64	1487.98	2090.78	1734416.35	14466058.86	39°49'58.4046"N	80°39'54.5870"W	2566.21	54.561	0.15	0.00	-0.15
8671.00	88.590	149.090	6844.65	526.66	1406.48	2139.54	1734465.09	14465977.39	39°49'57.5974"N	80°39'53.9659"W	2560.43	56.680	0.19	0.19	-0.04
8765.00	88.590	149.080	6846.97	617.73	1325.86	2187.82	1734513.35	14465896.80	39°49'56.7989"N	80°39'53.3509"W	2558.21	58.783	0.01	0.00	-0.01
8861.00	88.590	148.950	6849.33	710.77	1243.59	2237.23	1734562.74	14465814.56	39°49'55.9840"N	80°39'52.7216"W	2559.63	60.932	0.14	0.00	-0.14
8955.00	88.590	149.230	6851.64	801.84	1162.96	2285.50	1734610.99	14465733.96	39°49'55.1854"N	80°39'52.1067"W	2564.37	63.031	0.30	0.00	0.30
9050.00	88.740	149.190	6853.85	893.83	1081.37	2334.11	1734659.59	14465652.41	39°49'54.3773"N	80°39'51.4874"W	2572.44	65.142	0.16	0.16	-0.04
9145.00	88.590	148.850	6856.07	985.89	999.95	2383.00	1734708.46	14465571.01	39°49'53.5708"N	80°39'50.8647"W	2584.30	67.236	0.39	-0.16	-0.36
9240.00	88.900	149.170	6858.15	1077.97	918.53	2431.90	1734757.34	14465489.63	39°49'52.7644"N	80°39'50.2418"W	2599.59	69.309	0.47	0.33	0.34
9335.00	88.560	149.170	6860.25	1169.98	836.97	2480.58	1734806.00	14465408.10	39°49'51.9566"N	80°39'49.6218"W	2617.98	71.355	0.36	-0.36	0.00
9430.00	88.960	150.580	6862.31	1261.69	754.82	2528.25	1734853.64	14465325.99	39°49'51.1430"N	80°39'49.0148"W	2638.52	73.377	1.54	0.42	1.48
9525.00	88.530	149.850	6864.39	1353.25	672.39	2575.42	1734900.80	14465243.59	39°49'50.3266"N	80°39'48.4140"W	2661.75	75.368	0.89	-0.45	-0.77
9619.00	89.420	151.760	6866.07	1443.59	590.35	2621.27	1734946.63	14465161.58	39°49'49.5142"N	80°39'47.8304"W	2686.92	77.308	2.24	0.95	2.03
9714.00	88.470	150.100	6867.82	1534.84	507.34	2667.41	1734992.76	14465078.60	39°49'48.6920"N	80°39'47.2429"W	2715.23	79.231	2.01	-1.00	-1.75
9809.00	88.650	150.080	6870.21	1626.45	425.02	2714.77	1735040.10	14464996.31	39°49'47.8767"N	80°39'46.6398"W	2747.84	81.102	0.19	0.19	-0.02
9903.00	88.530	149.840	6872.52	1717.16	343.67	2761.81	1735087.12	14464914.99	39°49'47.0711"N	80°39'46.0408"W	2783.11	82.907	0.29	-0.13	-0.26
9998.00	88.160	149.950	6875.27	1808.85	261.52	2809.44	1735134.73	14464832.88	39°49'46.2574"N	80°39'45.4342"W	2821.59	84.682	0.41	-0.39	0.12
10093.00	88.340	150.320	6878.17	1900.43	179.17	2856.73	1735182.00	14464750.56	39°49'45.4419"N	80°39'44.8322"W	2862.34	86.411	0.43	0.19	0.39
10189.00	88.160	149.760	6881.10	1993.01	96.04	2904.65	1735229.90	14464667.46	39°49'44.6185"N	80°39'44.2220"W	2906.23	88.106	0.61	-0.19	-0.58
10283.00	88.130	150.390	6884.14	2083.65	14.62	2951.52	1735276.75	14464586.07	39°49'43.8121"N	80°39'43.6252"W	2951.55	89.716	0.67	-0.03	0.67
10378.00	88.000	150.130	6887.35	2175.16	-67.82	2998.61	1735323.83	14464503.66	39°49'42.9956"N	80°39'43.0255"W	2999.38	91.296	0.31	-0.14	-0.27
10473.00	88.030	150.070	6890.64	2266.74	-150.13	3045.94	1735371.14	14464421.39	39°49'42.1805"N	80°39'42.4228"W	3049.64	92.822	0.07	0.03	-0.06
10568.00	88.340	150.380	6893.65	2358.28	-232.55	3093.10	1735418.27	14464339.00	39°49'41.3642"N	80°39'41.8224"W	3101.82	94.300	0.46	0.33	0.33
10663.00	88.770	149.740	6896.04	2449.90	-314.84	3140.49	1735465.65	14464256.74	39°49'40.5492"N	80°39'41.2189"W	3156.24	95.725	0.81	0.45	-0.67
10758.00	88.680	150.110	6898.16	2541.59	-397.03	3188.09	1735513.23	14464174.58	39°49'39.7351"N	80°39'40.6128"W	3212.72	97.099	0.40	-0.09	0.39
10853.00	88.590	149.910	6900.42	2633.24	-479.29	3235.56	1735560.68	14464092.36	39°49'38.9204"N	80°39'40.0084"W	3270.87	98.426	0.23	-0.09	-0.21
10949.00	88.620	150.240	6902.76	2725.83	-562.47	3283.44	1735608.54	14464009.22	39°49'38.0967"N	80°39'39.3987"W	3331.27	99.721	0.35	0.03	0.34
11044.00	88.710	150.850	6904.97	2817.24	-645.16	3330.14	1735655.22	14463926.55	39°49'37.2776"N	80°39'38.8042"W	3392.06	100.964	0.65	0.09	0.64

PREPARED
 Office of Oil and Gas
 Environmental Protection
 WV Department of
 Environmental Protection
 DEC 23 2024



Actual Wellpath Report

Hudson S-8HM AWP Proj: 18533'

Page 6 of 10



REFERENCE WELLPATH IDENTIFICATION

Operator	EQT (TUG HILL OPERATING, LLC)	Well	Hudson S-8HM
Field	Marshall	API	47-051-02379-0000
Facility	Hudson	Wellbore	Hudson S-8HM AWB
Slot	Slot 08		

WELLPATH DATA (200 stations)

MD [ft]	Inclination [°]	Azimuth [°]	TVD [ft]	Vert Sect [ft]	North [ft]	East [ft]	Grid East [US ft]	Grid North [US ft]	Latitude	Longitude	Closure Dist [ft]	Closure Dir [°]	DLS [°/100ft]	Build Rate [°/100ft]	Turn Rate [°/100ft]
11139.00	88.120	148.710	6907.60	2908.98	-727.22	3377.93	1735703.00	14463844.53	39°49'36.4650"N	80°39'38.1956"W	3455.33	102.149	2.34	-0.62	-2.25
11234.00	88.740	149.970	6910.20	3000.90	-808.90	3426.36	1735751.41	14463762.87	39°49'35.6559"N	80°39'37.5789"W	3520.55	103.283	1.48	0.65	1.33
11328.00	88.400	149.910	6912.55	3091.62	-890.24	3473.43	1735798.46	14463681.57	39°49'34.8503"N	80°39'36.9795"W	3585.70	104.375	0.37	-0.36	-0.06
11424.00	88.530	149.650	6915.12	3184.33	-973.16	3521.73	1735846.74	14463598.68	39°49'34.0290"N	80°39'36.3645"W	3653.72	105.447	0.30	0.14	-0.27
11518.00	88.490	150.190	6917.56	3275.05	-1054.47	3568.83	1735893.82	14463517.40	39°49'33.2237"N	80°39'35.7648"W	3721.35	106.461	0.58	-0.04	0.57
11613.00	88.490	150.050	6920.07	3366.64	-1136.81	3616.14	1735941.11	14463435.09	39°49'32.4081"N	80°39'35.1624"W	3790.62	107.452	0.15	0.00	-0.15
11708.00	88.430	150.090	6922.62	3458.26	-1219.12	3663.52	1735988.48	14463352.82	39°49'31.5930"N	80°39'34.5591"W	3861.04	108.406	0.08	-0.06	0.04
11803.00	88.430	149.620	6925.22	3549.97	-1301.24	3711.21	1736036.15	14463270.73	39°49'30.7797"N	80°39'33.9519"W	3932.72	109.322	0.49	0.00	-0.49
11898.00	88.220	149.740	6928.00	3641.75	-1383.21	3759.15	1736084.07	14463188.80	39°49'29.9678"N	80°39'33.3415"W	4005.56	110.201	0.25	-0.22	0.13
11993.00	88.520	150.340	6930.70	3733.37	-1465.48	3806.57	1736131.47	14463106.56	39°49'29.1529"N	80°39'32.7377"W	4078.93	111.056	0.71	0.32	0.63
12087.00	88.560	150.130	6933.10	3823.96	-1547.05	3853.22	1736178.10	14463025.02	39°49'28.3450"N	80°39'32.1437"W	4152.19	111.875	0.23	0.04	-0.22
12182.00	88.430	150.280	6935.59	3915.52	-1629.46	3900.41	1736225.27	14462942.64	39°49'27.5288"N	80°39'31.5430"W	4227.10	112.674	0.21	-0.14	0.16
12277.00	88.220	149.880	6938.37	4007.12	-1711.77	3947.78	1736272.62	14462860.36	39°49'26.7137"N	80°39'30.9399"W	4302.92	113.442	0.48	-0.22	-0.42
12372.00	88.590	149.970	6941.01	4098.80	-1793.95	3995.37	1736320.19	14462778.22	39°49'25.8997"N	80°39'30.3340"W	4379.64	114.180	0.40	0.39	0.09
12467.00	88.620	149.900	6943.33	4190.48	-1876.14	4042.95	1736367.75	14462696.06	39°49'25.0857"N	80°39'29.7282"W	4457.05	114.894	0.08	0.03	-0.07
12562.00	88.490	148.940	6945.72	4282.38	-1957.90	4091.26	1736416.05	14462614.33	39°49'24.2758"N	80°39'29.1130"W	4535.61	115.574	1.02	-0.14	-1.01
12656.00	88.430	148.630	6948.25	4373.57	-2038.26	4139.96	1736464.72	14462534.00	39°49'23.4798"N	80°39'28.4928"W	4614.52	116.213	0.34	-0.06	-0.33
12751.00	88.650	149.210	6950.67	4465.67	-2119.60	4188.99	1736513.73	14462452.69	39°49'22.6741"N	80°39'27.8684"W	4694.71	116.839	0.65	0.23	0.61
12846.00	88.710	149.650	6952.86	4557.57	-2201.37	4237.29	1736562.02	14462370.95	39°49'21.8642"N	80°39'27.2534"W	4775.00	117.453	0.47	0.06	0.46
12941.00	88.460	149.860	6955.20	4649.33	-2283.42	4285.13	1736609.83	14462288.94	39°49'21.0516"N	80°39'26.6443"W	4855.54	118.052	0.34	-0.26	0.22
13035.00	88.190	149.080	6957.95	4740.23	-2364.35	4332.86	1736657.55	14462208.04	39°49'20.2500"N	80°39'26.0366"W	4935.97	118.620	0.88	-0.29	-0.83
13130.00	88.490	149.800	6960.70	4832.11	-2446.12	4381.14	1736705.81	14462126.30	39°49'19.4400"N	80°39'25.4218"W	5017.75	119.176	0.82	0.32	0.76
13225.00	88.590	148.870	6963.12	4924.04	-2527.81	4429.57	1736754.22	14462044.65	39°49'18.6309"N	80°39'24.8050"W	5100.09	119.712	0.98	0.11	-0.98
13320.00	88.460	149.470	6965.57	5016.04	-2609.35	4478.24	1736802.88	14461963.13	39°49'17.8232"N	80°39'24.1853"W	5182.99	120.228	0.65	-0.14	0.63
13414.00	88.250	148.750	6968.27	5107.09	-2689.99	4526.48	1736851.09	14461882.53	39°49'17.0245"N	80°39'23.5710"W	5265.46	120.722	0.80	-0.22	-0.77
13509.00	88.490	149.420	6970.97	5199.12	-2771.46	4575.27	1736899.86	14461801.09	39°49'16.2175"N	80°39'22.9497"W	5349.21	121.205	0.75	0.25	0.71
13604.00	88.770	149.280	6973.24	5291.05	-2853.16	4623.68	1736948.26	14461719.42	39°49'15.4082"N	80°39'22.3333"W	5433.14	121.678	0.33	0.29	-0.15
13699.00	88.370	148.630	6975.61	5383.14	-2934.53	4672.66	1736997.22	14461638.08	39°49'14.6022"N	80°39'21.7096"W	5517.72	122.130	0.80	-0.42	-0.68
13794.00	88.520	148.860	6978.19	5475.31	-3015.71	4721.93	1737046.47	14461556.93	39°49'13.7981"N	80°39'21.0821"W	5602.78	122.565	0.29	0.16	0.24
13890.00	88.460	148.300	6980.72	5568.52	-3097.60	4771.96	1737096.48	14461475.07	39°49'12.9868"N	80°39'20.4450"W	5689.18	122.989	0.59	-0.06	-0.58

RECEIVED
 Office of Oil and Gas
 DECEMBER 23 2024
 WV Department of Environmental Protection



Actual Wellpath Report

Hudson S-8HM AWP Proj: 18533'
Page 7 of 10



REFERENCE WELLPATH IDENTIFICATION

Operator	EQT (TUG HILL OPERATING, LLC)	Well	Hudson S-8HM
Field	Marshall	API	47-051-02379-0000
Facility	Hudson	Wellbore	Hudson S-8HM AWB
Slot	Slot 08		

WELLPATH DATA (200 stations)

MD (ft)	Inclination [°]	Azimuth [°]	TVD (ft)	Vert Sect (ft)	North (ft)	East (ft)	Grid East [US ft]	Grid North [US ft]	Latitude	Longitude	Closure Dist (ft)	Closure Dir [°]	DLS [°/100ft]	Build Rate [°/100ft]	Turn Rate [°/100ft]
13985.00	88.370	146.070	6983.35	5661.27	-3177.41	4823.42	1737147.92	14461395.30	39°49'12.1962"N	80°39'19.7894"W	5775.93	123.375	2.35	-0.09	-2.35
14080.00	88.180	145.810	6986.21	5754.44	-3256.08	4876.60	1737201.08	14461316.66	39°49'11.4168"N	80°39'19.1117"W	5863.73	123.731	0.34	-0.20	-0.27
14175.00	88.180	148.880	6989.22	5847.12	-3336.01	4927.83	1737252.29	14461236.76	39°49'10.6249"N	80°39'18.4591"W	5950.84	124.097	3.23	0.00	3.23
14270.00	88.370	150.320	6992.08	5938.93	-3417.91	4975.88	1737300.32	14461154.89	39°49'9.8137"N	80°39'17.8474"W	6036.68	124.485	1.53	0.20	1.52
14365.00	88.460	150.660	6994.71	6030.36	-3500.55	5022.66	1737347.08	14461072.28	39°49'8.9951"N	80°39'17.2520"W	6122.17	124.875	0.37	0.09	0.36
14459.00	88.370	150.110	6997.31	6120.87	-3582.24	5069.09	1737393.49	14460990.62	39°49'8.1861"N	80°39'16.6609"W	6207.11	125.248	0.59	-0.10	-0.59
14554.00	88.490	149.240	6999.92	6212.66	-3664.21	5117.04	1737441.42	14460908.68	39°49'7.3742"N	80°39'16.0505"W	6293.69	125.606	0.92	0.10	-0.92
14649.00	88.680	149.210	7002.26	6304.64	-3745.81	5165.63	1737490.00	14460827.12	39°49'6.5659"N	80°39'15.4318"W	6380.82	125.947	0.20	0.20	-0.03
14745.00	89.080	149.480	7004.14	6397.55	-3828.38	5214.57	1737538.92	14460744.58	39°49'5.7481"N	80°39'14.8087"W	6469.02	126.285	0.50	0.42	0.28
14840.00	89.080	149.190	7005.66	6489.50	-3910.08	5263.02	1737587.34	14460662.91	39°49'4.9388"N	80°39'14.1919"W	6556.53	126.610	0.31	0.00	-0.31
14935.00	88.770	148.860	7007.45	6581.57	-3991.52	5311.90	1737636.21	14460581.50	39°49'4.1321"N	80°39'13.5694"W	6644.44	126.922	0.48	-0.33	-0.35
15030.00	88.860	149.240	7009.41	6673.63	-4072.98	5360.75	1737685.03	14460500.08	39°49'3.3252"N	80°39'12.9475"W	6732.52	127.227	0.41	0.09	0.40
15125.00	88.920	148.900	7011.25	6765.69	-4154.45	5409.57	1737733.84	14460418.64	39°49'2.5182"N	80°39'12.3259"W	6820.77	127.524	0.36	0.06	-0.36
15220.00	88.920	149.000	7013.04	6857.79	-4235.83	5458.56	1737782.81	14460337.30	39°49'1.7121"N	80°39'11.7021"W	6909.28	127.811	0.11	0.00	0.11
15315.00	88.830	148.550	7014.91	6949.97	-4317.05	5507.80	1737832.03	14460256.11	39°49'0.9075"N	80°39'11.0751"W	6998.05	128.090	0.48	-0.09	-0.47
15410.00	88.830	148.550	7016.85	7042.23	-4398.08	5557.35	1737881.56	14460175.11	39°49'0.1049"N	80°39'10.4441"W	7087.12	128.358	0.00	0.00	0.00
15505.00	88.890	146.650	7018.74	7134.85	-4478.27	5608.24	1737932.43	14460094.95	39°48'59.3104"N	80°39'9.7959"W	7176.86	128.608	2.00	0.06	-2.00
15600.00	88.920	149.370	7020.55	7227.32	-4558.82	5658.56	1737982.73	14460014.43	39°48'58.5125"N	80°39'9.1551"W	7266.51	128.857	2.86	0.03	2.86
15695.00	88.620	147.090	7022.59	7319.69	-4639.56	5708.56	1738032.71	14459933.72	39°48'57.7126"N	80°39'8.5183"W	7356.17	129.102	2.42	-0.32	-2.40
15790.00	88.920	146.820	7024.63	7412.55	-4719.17	5760.35	1738084.48	14459854.14	39°48'56.9238"N	80°39'7.8585"W	7446.63	129.326	0.42	0.32	-0.28
15885.00	88.890	150.840	7026.45	7504.68	-4800.43	5809.50	1738133.62	14459772.91	39°48'56.1189"N	80°39'7.2327"W	7536.21	129.567	4.23	-0.03	4.23
15980.00	88.770	149.930	7028.39	7596.17	-4883.00	5856.44	1738180.53	14459690.38	39°48'55.3011"N	80°39'6.6353"W	7625.06	129.821	0.97	-0.13	-0.96
16075.00	88.950	150.620	7030.28	7687.71	-4965.48	5903.54	1738227.61	14459607.93	39°48'54.4842"N	80°39'6.0359"W	7714.13	130.067	0.75	0.19	0.73
16170.00	89.750	150.420	7031.35	7779.16	-5048.18	5950.28	1738274.34	14459525.26	39°48'53.6651"N	80°39'5.4410"W	7803.20	130.311	0.87	0.84	-0.21
16265.00	88.830	150.040	7032.53	7870.73	-5130.63	5997.45	1738321.49	14459442.84	39°48'52.8485"N	80°39'4.8407"W	7892.58	130.546	1.05	-0.97	-0.40
16360.00	89.110	150.220	7034.24	7962.34	-5213.00	6044.75	1738368.77	14459360.51	39°48'52.0326"N	80°39'4.2386"W	7982.13	130.774	0.35	0.29	0.19
16455.00	89.020	150.760	7035.79	8053.79	-5295.66	6091.54	1738415.54	14459277.87	39°48'51.2139"N	80°39'3.6431"W	8071.61	131.002	0.58	-0.09	0.57
16550.00	88.280	150.280	7038.03	8145.22	-5378.34	6138.28	1738462.26	14459195.23	39°48'50.3951"N	80°39'3.0483"W	8161.19	131.225	0.93	-0.78	-0.51
16645.00	89.940	150.110	7039.50	8236.80	-5460.76	6185.49	1738509.46	14459112.84	39°48'49.5787"N	80°39'2.4474"W	8251.07	131.439	1.76	1.75	-0.18
16740.00	89.630	150.500	7039.86	8328.34	-5543.28	6232.55	1738556.50	14459030.35	39°48'48.7613"N	80°39'1.8485"W	8341.03	131.650	0.52	-0.33	0.41

WV Department of
 Environmental Protection
 Office of Oil and Gas
 PERMITS
 DEC 23 2024



Actual Wellpath Report

Hudson S-8HM AWP Proj: 18533'
Page 8 of 10



REFERENCE WELLPATH IDENTIFICATION			
Operator	EQT (TUG HILL OPERATING, LLC)	Well	Hudson S-8HM
Field	Marshall	API	47-051-02379-0000
Facility	Hudson	Wellbore	Hudson S-8HM AWB
Slot	Slot 08		

WELLPATH DATA (200 stations) † = interpolated, ‡ = extrapolated station															
MD [ft]	Inclination [°]	Azimuth [°]	TVD [ft]	Vert Sect [ft]	North [ft]	East [ft]	Grid East [US ft]	Grid North [US ft]	Latitude	Longitude	Closure Dist [ft]	Closure Dir [°]	DLS ["/100ft]	Build Rate ["/100ft]	Turn Rate ["/100ft]
16835.00	90.090	148.400	7040.09	8420.25	-5625.09	6280.84	1738604.76	14458948.58	39°48'47.9510"N	80°39'1.2338"W	8431.52	131.847	2.26	0.48	-2.21
16930.00	90.280	144.190	7039.79	8513.33	-5704.10	6333.54	1738657.45	14458869.59	39°48'47.1681"N	80°39'0.5624"W	8523.53	132.007	4.44	0.20	-4.43
17025.00	90.710	145.220	7038.96	8606.91	-5781.64	6388.43	1738712.31	14458792.09	39°48'46.3998"N	80°38'59.8629"W	8616.23	132.146	1.17	0.45	1.08
17122.00	90.860	145.360	7037.64	8702.29	-5861.37	6443.66	1738767.52	14458712.39	39°48'45.6097"N	80°38'59.1592"W	8710.70	132.291	0.21	0.15	0.14
17215.00	90.800	150.340	7036.29	8792.85	-5940.07	6493.13	1738816.97	14458633.72	39°48'44.8300"N	80°38'58.5292"W	8800.29	132.453	5.35	-0.06	5.35
17310.00	90.520	150.860	7035.19	8884.26	-6022.83	6539.76	1738863.58	14458550.99	39°48'44.0103"N	80°38'57.9358"W	8890.61	132.644	0.62	-0.29	0.55
17406.00	90.490	150.740	7034.35	8976.54	-6106.63	6586.59	1738910.40	14458467.22	39°48'43.1803"N	80°38'57.3399"W	8981.88	132.835	0.13	-0.03	-0.13
17501.00	90.430	150.990	7033.58	9067.83	-6189.61	6632.84	1738956.63	14458384.28	39°48'42.3585"N	80°38'56.7514"W	9072.26	133.020	0.27	-0.06	0.26
17596.00	90.610	151.210	7032.72	9159.01	-6272.77	6678.75	1739002.52	14458301.15	39°48'41.5349"N	80°38'56.1672"W	9162.61	133.205	0.30	0.19	0.23
17691.00	90.490	151.130	7031.81	9250.16	-6356.00	6724.56	1739048.31	14458217.96	39°48'40.7106"N	80°38'55.5844"W	9253.02	133.386	0.15	-0.13	-0.08
17785.00	89.880	151.300	7031.51	9340.34	-6438.38	6769.82	1739093.56	14458135.61	39°48'39.8947"N	80°38'55.0085"W	9342.55	133.563	0.67	-0.65	0.18
17880.00	89.720	151.200	7031.84	9431.45	-6521.67	6815.52	1739139.23	14458052.35	39°48'39.0698"N	80°38'54.4272"W	9433.10	133.738	0.20	-0.17	-0.11
17975.00	89.840	151.470	7032.20	9522.53	-6605.02	6861.09	1739184.79	14457969.03	39°48'38.2443"N	80°38'53.8475"W	9523.70	133.911	0.31	0.13	0.28
18069.00	87.870	149.950	7034.08	9612.90	-6686.98	6907.06	1739230.74	14457887.10	39°48'37.4325"N	80°38'53.2625"W	9613.70	134.073	2.65	-2.10	-1.62
18164.00	88.030	150.550	7037.48	9704.42	-6769.41	6954.17	1739277.83	14457804.71	39°48'36.6161"N	80°38'52.6629"W	9704.92	134.229	0.65	0.17	0.63
18259.00	87.470	150.210	7041.21	9795.86	-6851.93	7001.09	1739324.73	14457722.22	39°48'35.7988"N	80°38'52.0659"W	9796.13	134.383	0.69	-0.59	-0.36
18354.00	87.410	150.380	7045.45	9887.32	-6934.36	7048.12	1739371.74	14457639.82	39°48'34.9823"N	80°38'51.4674"W	9887.43	134.534	0.19	-0.06	0.18
18449.00	87.170	150.130	7049.94	9978.79	-7016.75	7095.20	1739418.80	14457557.46	39°48'34.1662"N	80°38'50.8683"W	9978.81	134.682	0.36	-0.25	-0.26
18508.00	89.810	150.540	7051.50	10035.61	-7068.00	7124.39	1739447.98	14457506.23	39°48'33.6587"N	80°38'50.4969"W	10035.61	134.772	4.53	4.47	0.69
18533.00‡	89.810	150.540	7051.58	10059.67	-7089.77	7136.68	1739460.27	14457484.47	39°48'33.4431"N	80°38'50.3404"W	10059.67	134.811	0.00	0.00	0.00

WV Department of
 Environmental Protection
 Office of Oil and Gas
 DEC 23 2024



Actual Wellpath Report

Hudson S-8HM AWP Proj: 18533'
Page 9 of 10



REFERENCE WELLPATH IDENTIFICATION

Operator	EQT (TUG HILL OPERATING, LLC)	Well	Hudson S-8HM
Field	Marshall	API	47-051-02379-0000
Facility	Hudson	Wellbore	Hudson S-8HM AWB
Slot	Slot 08		

HOLE & CASING SECTIONS - Ref Wellbore: Hudson S-8HM AWB Ref Wellpath: Hudson S-8HM AWP Proj: 18533'

String/Diameter	Start MD [ft]	End MD [ft]	Interval [ft]	Start TVD [ft]	End TVD [ft]	Start N/S [ft]	Start E/W [ft]	End N/S [ft]	End E/W [ft]
30in Conductor	28.00	148.00	120.00	28.00	148.00	0.00	0.00	0.08	0.03
17.5in Open Hole	148.00	1352.00	1204.00	148.00	1351.98	0.08	0.03	4.89	-0.08
13.375in Casing Surface	28.00	1352.00	1324.00	28.00	1351.98	0.00	0.00	4.89	-0.08
12.25in Open Hole	1352.00	2428.00	1076.00	1351.98	2421.51	4.89	-0.08	60.59	63.13
9.625in Casing Intermediate	28.00	2428.00	2400.00	28.00	2421.51	0.00	0.00	60.59	63.13
8.75in Open Hole	2428.00	6958.00	4530.00	2421.51	6163.71	60.59	63.13	2136.67	1171.36
8.5in Open Hole	6958.00	18533.00	11575.00	6163.71	7051.58	2136.67	1171.36	-7089.77	7136.68
5.5in Casing Production	28.00	18533.00	18505.00	28.00	7051.58	0.00	0.00	-7089.77	7136.68

TARGETS

Name	TVD [ft]	North [ft]	East [ft]	Grid East [US ft]	Grid North [US ft]	Latitude	Longitude	Shape
Hudson S-8HM LP Rev-1	6813.00	1908.16	1833.42	1734159.09	14466478.87	39°50'2.5666"N	80°39'57.8659"W	point
Hudson S-8HM BHL Rev-1	7063.60	-7090.68	7138.32	1739461.91	14457483.57	39°48'33.4340"N	80°38'50.3195"W	point

WELLPATH COMPOSITION - Ref Wellbore: Hudson S-8HM AWB Ref Wellpath: Hudson S-8HM AWP Proj: 18533'

Start MD [ft]	End MD [ft]	Positional Uncertainty Model	Log Name/Comment	Wellbore	Survey Date
28.00	1345.00	OWSG MWD rev2 + HRGM	01 SDI MWD<17-1/2">(224'-1345')		
1345.00	2454.00	OWSG MWD rev2 + HRGM	02 SDI MWD<12-1/4">(1345')(1399'-2454')	Hudson S-8HM AWB	12/9/2023
2454.00	6879.00	OWSG MWD rev2 + HRGM	03 SDI MWD<8-3/4">(2454')(2549'-6879')	Hudson S-8HM AWB	1/30/2024
6879.00	18533.00	OWSG MWD rev2 + IFR1 + Sag + Multi-Station Correction	04 BH Lucida +SQC IFR1+SAG+FDIR <8-1/2"> (6879')(6962'-18508')	Hudson S-8HM AWB	1/30/2024

WV Department of Environmental Protection
 DEC 23 2024
 Office of Oil and Gas



Actual Wellpath Report

Hudson S-8HM AWP Proj: 18533'

Page 10 of 10



REFERENCE WELLPATH IDENTIFICATION

Operator	EQT (TUG HILL OPERATING, LLC)	Well	Hudson S-8HM
Field	Marshall	API	47-051-02379-0000
Facility	Hudson	Wellbore	Hudson S-8HM AWB
Slot	Slot 08		

COMMENTS

Wellpath general comments

API: 47-051-02379-0000

BH Job #: 112078146

Rig: Patterson 294

Duration: 1/30/2024-2/1/2024

SDI MWD <17-1/2"> (224'-1345')

SDI MWD <12-1/4"> (1345')(1399'-2454')

SDI MWD <8-3/4"> (2454')(2549'-6879')

BH Lucida+SuperiorQC+SAG+FDIR <8-1/2"> (6879')(6962'-18508')

Projected MD at TD: 18533'

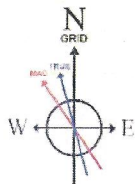
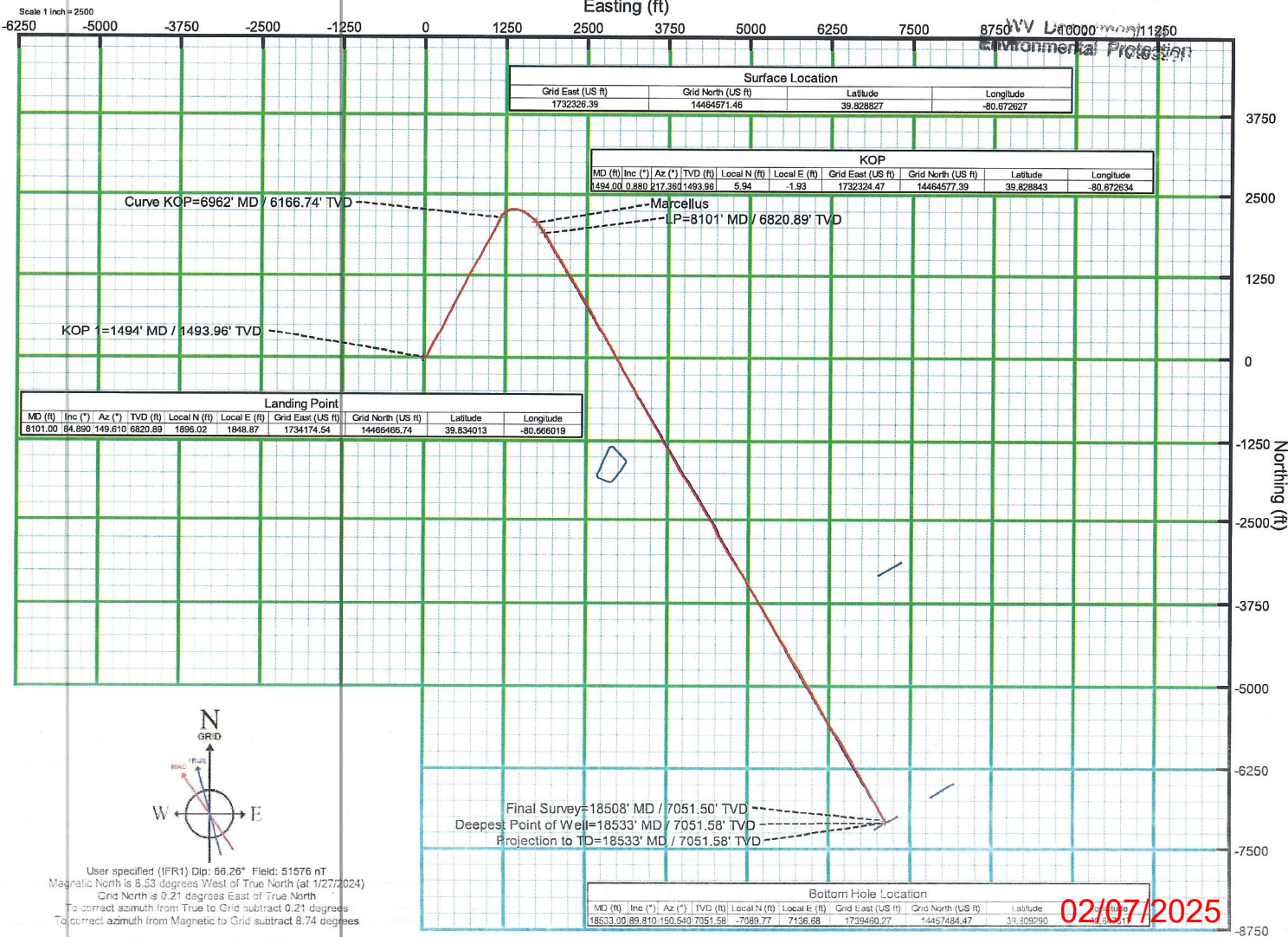
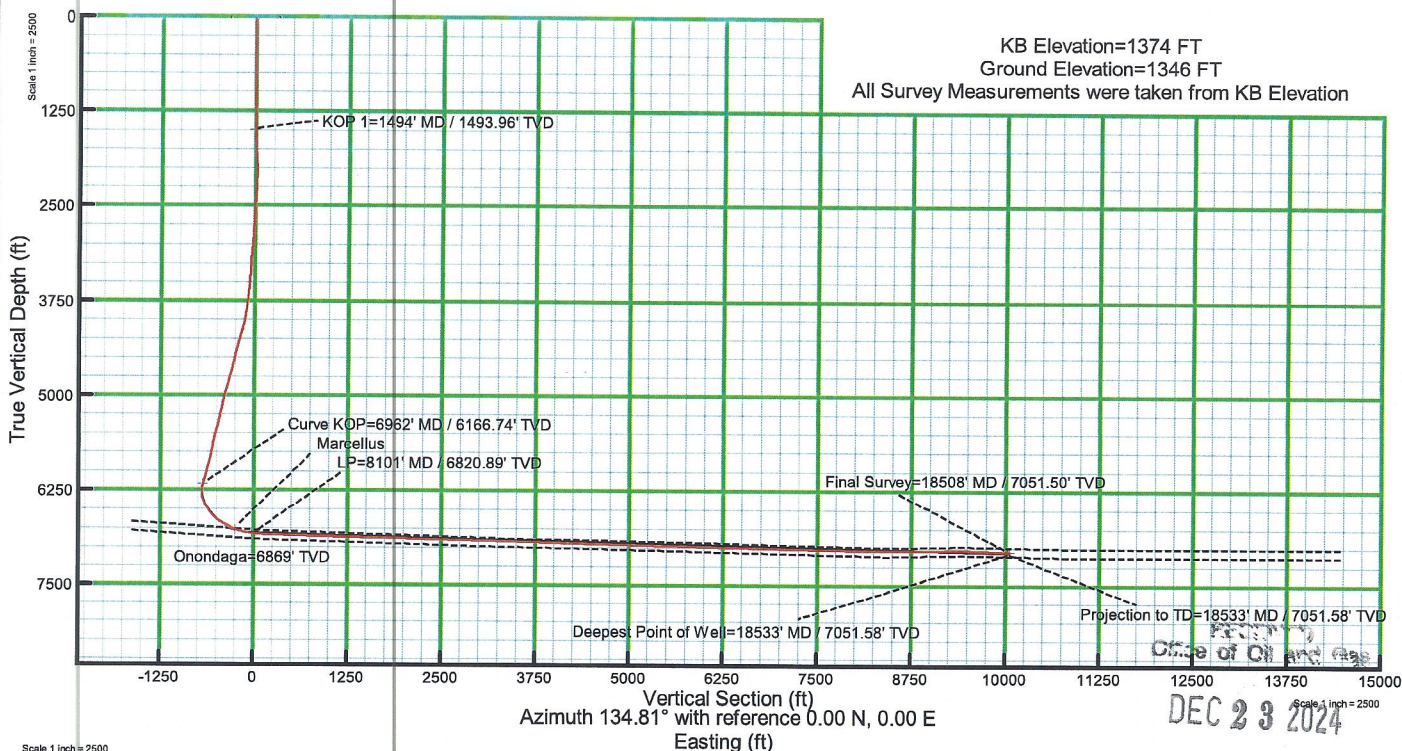
DEC 23 2024
Office of Oil and Gas
WV Department of
Environmental Protection



EQT (TUG HILL OPERATING, LLC)

Location: Marshall County, WV
Field: Marshall
Facility: Hudson

Slot: Slot 08
Well: Hudson S-8HM
Wellbore: Hudson S-8HM AWB



User specified (IFR1) Dip: 66.26° Field: 51876 nT
Magnetic North is 9.53 degrees West of True North (at 1/27/2024)
Grid North is 0.21 degrees East of True North
To correct azimuth from True to Grid subtract 0.21 degrees
To correct azimuth from Magnetic to Grid subtract 8.74 degrees