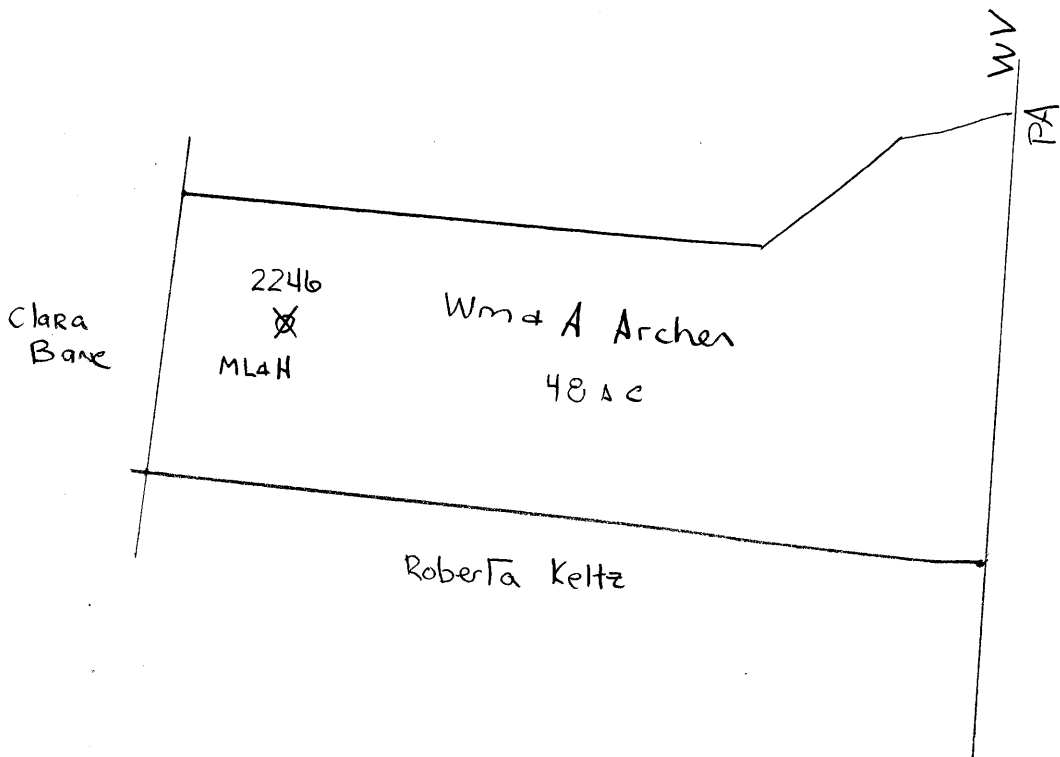


Cameron dist

Plugging Affidavit

June 5, 1931



Marsh 7A

Cameron District, Marshall County, W. Va.
 Manufacturers Light & Heat Co., 800 Union Tr. Bldg., Pittsburgh, Pa.
 On 1/8 acres, surface owned by Wm. and Alice Archer, RD 3, Cameron,
 W. Va., and mineral rights by MIAH Co., Pittsburgh, Pa.
 Drilled prior to June 1, 1929.

Elevation, 1520'.

16' conductor; 8 1/2" casing, 833'; 6-5/8", 2163'.

Coal was encountered at 715-720, 900-906, and 985-992'.

Abandonment reported to Dept. of Mines April 13, 1931.

MARS-7-A

	Top.	Bottom.
Bluff Sand (2 bailers water)	680	- 700
Waynesburg Coal	715	- 720
Mapletown Coal	900	- 906
Pittsburgh Coal (2 bailers water)	985	- 992
Murphy Sand	1115	- 1135
Little Dunkard Sand	1410	- 1430
Big Dunkard Sand	1490	- 1525
Salt Sand	1800	- 1975
Marion Sand	1975	- 2039
Big Lime	2098	- 2128
Big Injun Sand	2188	- 2390
30-Ft. Sand	2690	- 2720
50-Ft. Sand (gas at 2916')	2909	- 2930
Stray Sand	2965	- 2972
Gordon Sand	2976	- 3000
4th Sand	3075	- 3079
Total depth		3203