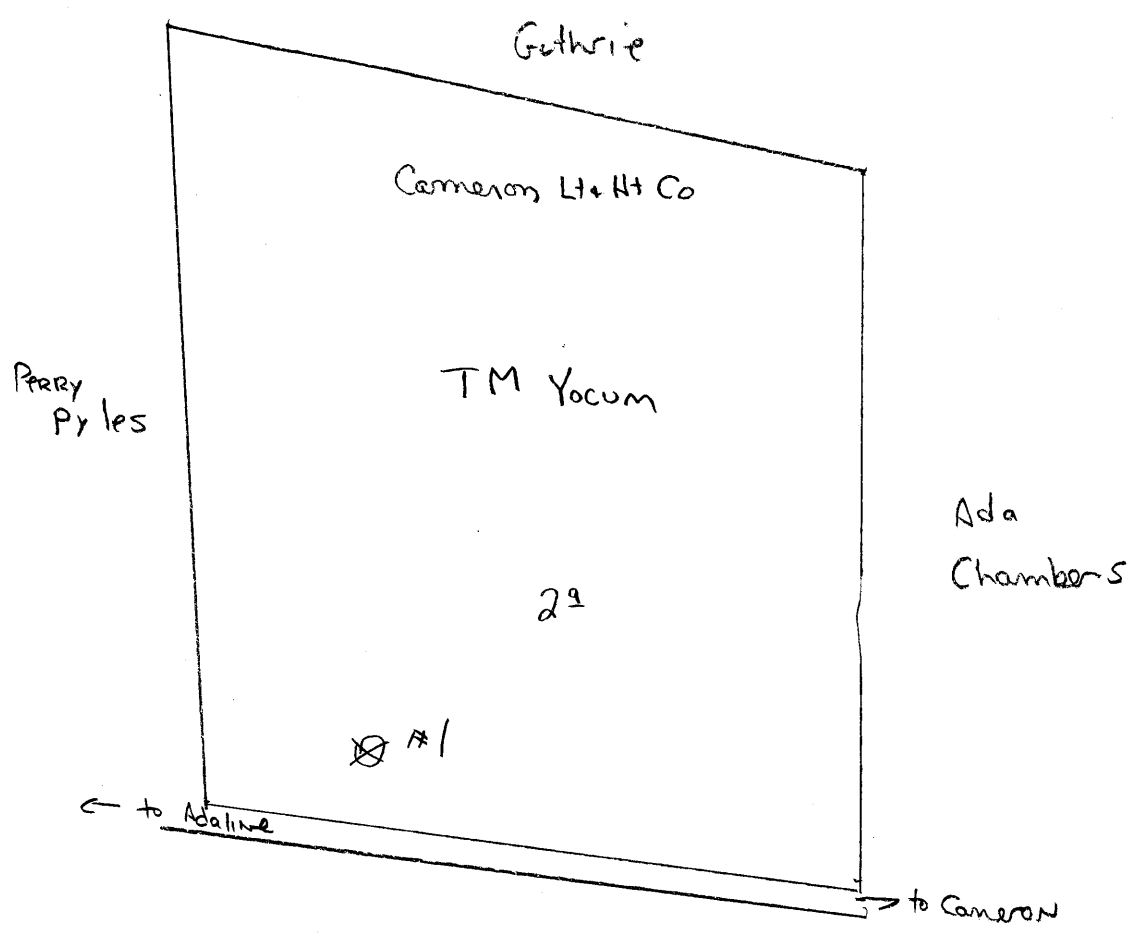


Cameron dist



DIXON NO. 1 WELL.

Marshall 48-A

Liberty

.....District, Marshall County, W. Va.

By Cameron Heat & Light Co., Cameron, W. Va.

Elevation, 1140'. 1115 + 18 ±

Plugged.

Well was shot at 2786 to 2800'.

Producing from year 1920 to 1934.

Abandonment reported to Dept. of Mines Feb. 22, 1935.

Record from Mr. Straub 9-11-39.

	Top.	Bottom.
Pittsburgh Coal	774	- 782
Gas Sand	1385	- 1465
Salt Sand	1760	- 1810
Maxton Sand	1840	- 1865
Big Lime	1887	- 1937
Big Injun Sand (break, 1980-1990')	1937	- 1980
Squaw Sand	1990	- 2190
30-Ft. ? Sand	2530	- 2545
Gordon Stray Sand (gas at 2786-2797')	2781	- 2800
Total depth		2805