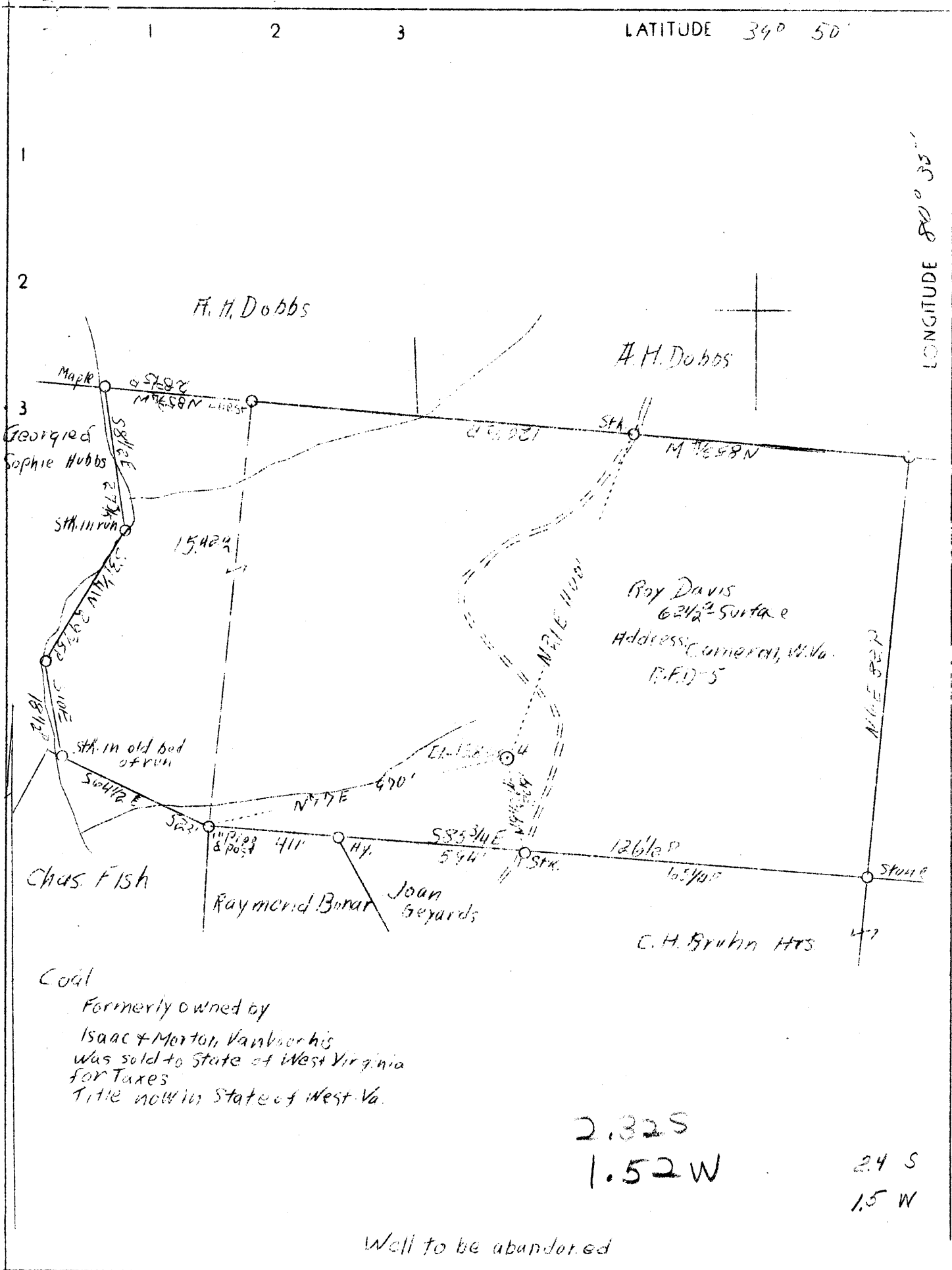


LATITUDE 39° 50'

LONGITUDE 80° 35'



Well to be abandoned

Company	South Penn Oil Co.
Address	411 Seventh Ave., Pittsburgh, Pa.
Farm	R.A. Chambers
Tract	Acres 100 Lease No. 32,319
Well (Farm) No.	4 Serial No.
Quadrangle	Cameron 5C
County	Marshall
District	Liberty
Engineer	E.C. Tablor
Engineer's Registration No.	
File No.	Drawing No.
Date	May 2, 1938 Scale 1"=400'

STATE OF WEST VIRGINIA
 Department of Mines
 OIL AND GAS DIVISION
 CHARLESTON

WELL LOCATION MAP
 File No. MARS-84-A

Denotes location of well on United States Topographic Maps, scale 1 to 62,500, latitude and longitude lines being represented by border lines as shown.

Denotes one inch spaces on border line of original tracing.

WEST VIRGINIA DEPARTMENT OF MINES
OIL AND GAS DIVISION

147

MARS-84-A

WELL RECORD

Permit No. 84-a

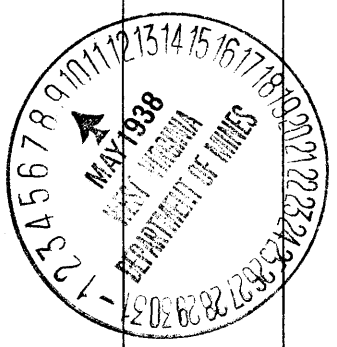
Oil or Gas Well **OIL**
(Kind)

Company **SOUTH PENN OIL COMPANY**
Address **411 Seventh Ave., Pittsburgh, Pa.**
Farm **R. A. Chambers** Acres **100**
Location (waters) **Magginty**
Well No. **4** Elev. **1283.13**
District **Liberty** County **Marshall**
The surface of tract is owned in fee by **Roy Davis**
R.F.D. 5, Address **Cameron, W.Va.**
Mineral rights are owned by **Frank Hubbs**
Moundsville, Address **W. Va.**
Drilling commenced **May 6, 1902**
Drilling completed **July 12, 1902**
Date shot **July 14, 1902** Depth of shot **-**
Open Flow /10ths Water in **-** Inch
/10ths Merc. in **-** Inch
Volume **-** Cu. Ft.
Rock Pressure **-** lbs. **-** hrs.
Oil **20** bbls., 1st 24 hrs.
Fresh water **-** feet **-** feet
Salt water **-** feet **-** feet

Casing and Tubing	Used in Drilling	Left in Well	Packers
Size			Kind of Packer
16			-
13			-
10	1381 (Pulled)		Size of
8 1/4	2001 1/8"		-
6 5/8	2382 1/8"		Depth set
5 3/16			-
3			Perf. top
2			Perf. bottom
Liners Used			Perf. top
Cond.	16		Perf. bottom

CASING CEMENTED **-** SIZE **-** No. FT. **-** Date **-**
COAL WAS ENCOUNTERED AT **735** FEET **48** INCHES
940 FEET **72** INCHES **1023** FEET **120** INCHES
- FEET **-** INCHES **-** FEET **-** INCHES

Formation	Color	Hard or Soft	Top	Bottom	Oil Gas or Water	Depth Found	Remarks
Native Coal			735	739			
Mapletown Coal			940	946			
Pittsburgh Coal			1023	1033			
Little Dunkard			1373	1390			
Big Dunkard			1500	1515			
Salt Sand			(None) ?				
Big Lime			2100	2140			
Big Injun			2140	2420			
Gordon			3011	3041			
					1st Pay	3013	
Total Depth				3044			



Liberty District, Marshall County, W. Va.

By South Penn Oil Co., 411 Seventh Ave., Pittsburgh, Pa.

On 100 acres, on Magginty Run.

Elevation, 1263.13' L.

Surface owned by Roy Davis, R. F. D. No. 5, Cameron, W. Va., and
minerals by Frank Hubbs, Moundsville, W. Va.

Drilling commenced May 6, 1902; completed, July 12, 1902.

Shot July 14, 1902.

Oil, 20 bbls., 1st 24 hrs.

10" casing, 1381' (pulled); 8 $\frac{1}{2}$ ", 2001' 6"; 6 $\frac{3}{8}$ ", 2382' 6"; conductor, 16'.

Coal was encountered at 735-739, 940-946, and 1023-1033'.

Oil well. Abandonment reported to Dept. of Mines May 5, 1938.

Record to RCT from Mrs. Griffith May 27, 1938.

	Top.	Bottom.
Native coal	735	739
Mapletown (Sewickley) Coal	940	946
Pittsburgh Coal	1023	1033
Little Dunkard Sand	1373	1390
Big Dunkard Sand	1500	1515
Salt Sand	None?	
Big Lime	2100	2140
Big Injun Sand	2140	2420
Gordon Sand (1st pay, 3013')	3011	3041
Total depth		3044