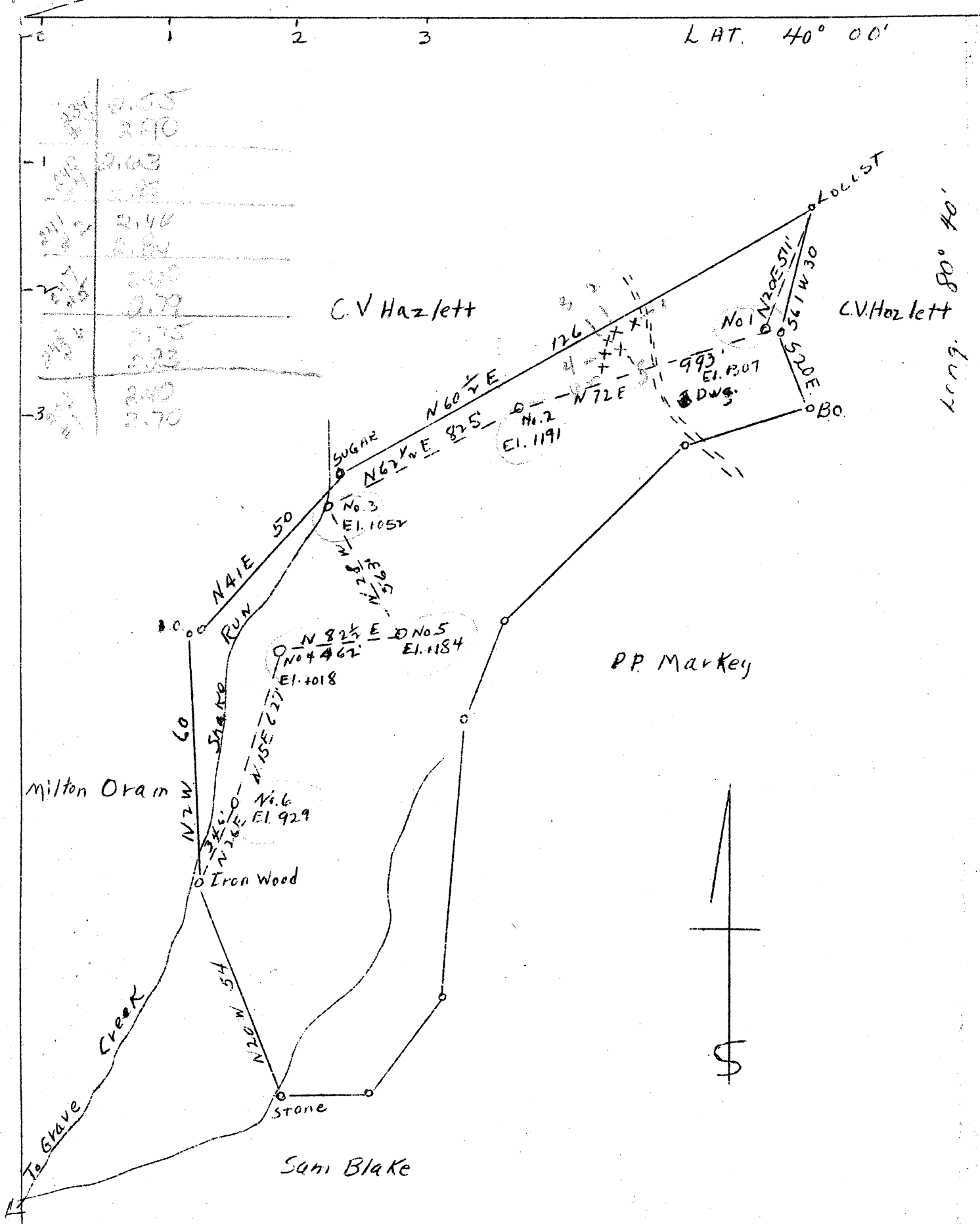


L AT. 40° 00'



2.55
2.90
2.63
2.35
2.46
2.84
2.79
2.75
2.33
2.40
2.70

ABANDONMENT X

COMPANY W. M. MOSES

ADDRESS SALEM, W. VA.

FARM PHILIP L. MARKEY HRS.

TRACT ACRES 86 1/4 LEASE NO. \_\_\_\_\_

WELL (FARM) NO. 1-2-3-4-5-6 SERIAL NO. \_\_\_\_\_

1307-1191-1052-1018

ELEVATION (SPIRIT) LEVEL 1184-929

QUADRANGLE CAMERON

COUNTY MARSHALL DIST. UNION

ENGINEER A. K. WESTFALL

ENGINEER REG. NO. \_\_\_\_\_

FILE NO. \_\_\_\_\_ DRAWING NO. \_\_\_\_\_

DATE 7/20/45 SCALE 1" - 30 POLES

STATE OF WEST VIRGINIA  
 DEPARTMENT OF MINES  
 OIL AND GAS DIVISION  
 CHARLESTON  
 WELL LOCATION MAP

FILE NO. ~~MARS-239A-NO. 3; 240A-NO. 4;~~  
~~241A-NO. 2; 247A-NO. 5; 248A-NO. 6;~~  
 253A-NO. 1

+ DENOTES LOCATION OF WELL ON U.S. TOPOGRAPHIC MAPS, SCALE 1 TO 62,500 LATITUDE AND LONGITUDE LINES BEING REPRESENTED BY BORDER LINES AS SHOWN.

- DENOTES ONE INCH SPACES ON BORDER LINE OF ORIGINAL TRACING.



STATE OF WEST VIRGINIA  
DEPARTMENT OF MINES  
OIL AND GAS DIVISION

294

WELL RECORD

Permit No. **MARS-248**

Oil or Gas Well **Oil**

Company **George P. Wasmith**  
Address **Glen Dale, W. Va.**  
Farm **Phillip L. Markey Heirs** Acres **86 1/4**  
Location (waters) **Little Bear Creek**  
Well No. **6** Elev. \_\_\_\_\_  
District **Union** County **Marshall**  
The surface of tract is owned in fee by **P. L. Markey Heirs**  
Address **Wheeling, W. Va.**  
Mineral rights are owned by **Same**  
Address \_\_\_\_\_  
Drilling commenced **1925**  
Drilling completed **1925**  
Date Shot \_\_\_\_\_ From \_\_\_\_\_ To \_\_\_\_\_  
With \_\_\_\_\_

Casing and Tubing	Used in Drilling	Left in Well	Packers
Size			Kind of Packer
16			
13			
10	60	60	Size of
8 1/4	390	Pulled	
6 1/2	1140	"	Depth set
5 3/16	1648	1648	
3			Perf. top
2	1745	1745	Perf. bottom
Liners Used			Perf. top
			Perf. bottom

Open Flow \_\_\_\_\_ /10ths Water in \_\_\_\_\_ Inch  
\_\_\_\_\_ /10ths Merc. in \_\_\_\_\_ Inch  
Volume \_\_\_\_\_ Cu. Ft.  
Rock Pressure \_\_\_\_\_ lbs. \_\_\_\_\_ hrs.  
Oil \_\_\_\_\_ bbls., 1st 24 hrs.  
Fresh water \_\_\_\_\_ feet \_\_\_\_\_ feet  
Salt water \_\_\_\_\_ feet \_\_\_\_\_ feet

CASING CEMENTED \_\_\_\_\_ SIZE \_\_\_\_\_ No. Ft. \_\_\_\_\_ Date \_\_\_\_\_  
COAL WAS ENCOUNTERED AT **628** FEET \_\_\_\_\_ INCHES  
\_\_\_\_\_ FEET \_\_\_\_\_ INCHES \_\_\_\_\_ FEET \_\_\_\_\_ INCHES  
\_\_\_\_\_ FEET \_\_\_\_\_ INCHES \_\_\_\_\_ FEET \_\_\_\_\_ INCHES

Formation	Color	Hard or Soft	Top	Bottom	Oil, Gas or Water	Depth Found	Remarks
Big Injun	White	Hard	1648	1745	Oil	1739	