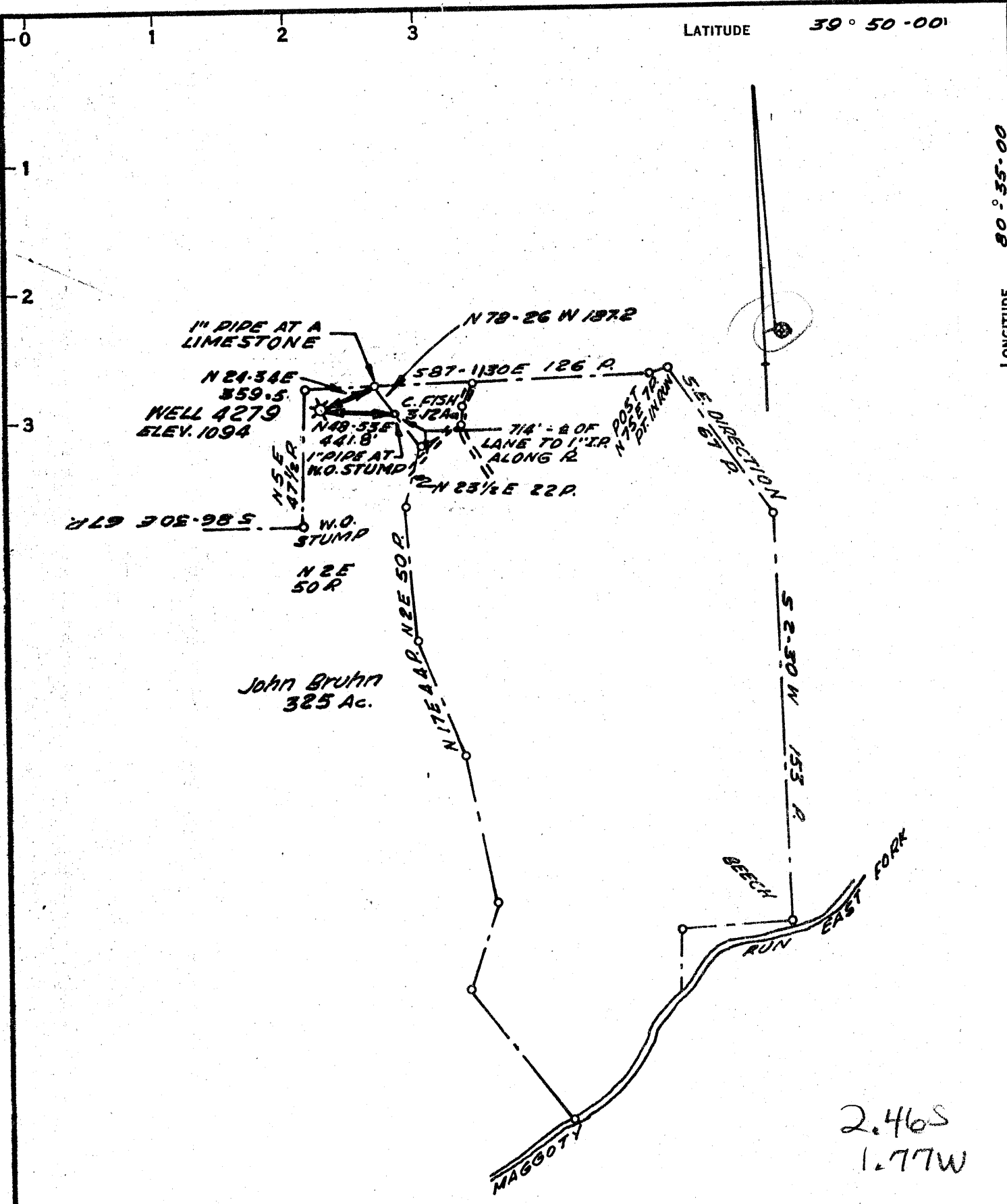


11/24/69 CEN



John Bruhn  
325 Ac.

2.46S  
1.77W

NOTE: Well ties are 1969 Magnetic.

COAL OWNED BY CONSOLIDATION COAL CO.

- NEW LOCATION
- RECONDITION
- DRILL DEEPER
- ABANDONMENT

"I, the undersigned, hereby certify that this map is correct to the best of my knowledge and belief and shows all the information required by paragraph 6 of the rules and regulations of the oil and gas section of the mining laws of West Virginia."  
Minimum degree of accuracy is one part in 200

Signed Jacob Snyder Pa. 7842-E  
J.D.C.

Wired 11-28-69 FB 1158-44

COMPANY THE MANUFACTURERS LIGHT & HEAT CO.  
 ADDRESS 800 UNION TRUST BLDG. PGH. PA.  
 FARM JOHN BRUHN  
 MAP 0-25-23 ACRES 325 LEASE NO. 27743  
 WELL (FARM) NO. 1 SERIAL NO. 4279  
 ELEVATION (SPIRIT LEVEL) 1094  
 QUADRANGLE CAMERON 15' 3C  
 COUNTY MARSHALL DISTRICT LIBERTY  
 POINT OF PROVEN ELEVATION U.S.G.S. ROAD ELEVATION  
1340  
 FILE NO. \_\_\_\_\_ DRAWING NO. Y-28-720  
 DATE NOV. 6, 69 SCALE 1" = 800'

STATE OF WEST VIRGINIA  
 DEPARTMENT OF MINES  
 OIL AND GAS DIVISION  
 CHARLESTON  
 WELL LOCATION MAP

FILE NO. Mars-798(A)

+ DENOTES LOCATION OF WELL ON UNITED STATES TOPOGRAPHIC MAPS. SCALE 1 TO 82,500. LATITUDE AND LONGITUDE LINES BEING REPRESENTED BY BORDER LINES AS SHOWN.  
 - DENOTES ONE INCH SPACES ON BORDER LINE OF ORIGINAL TRACING.