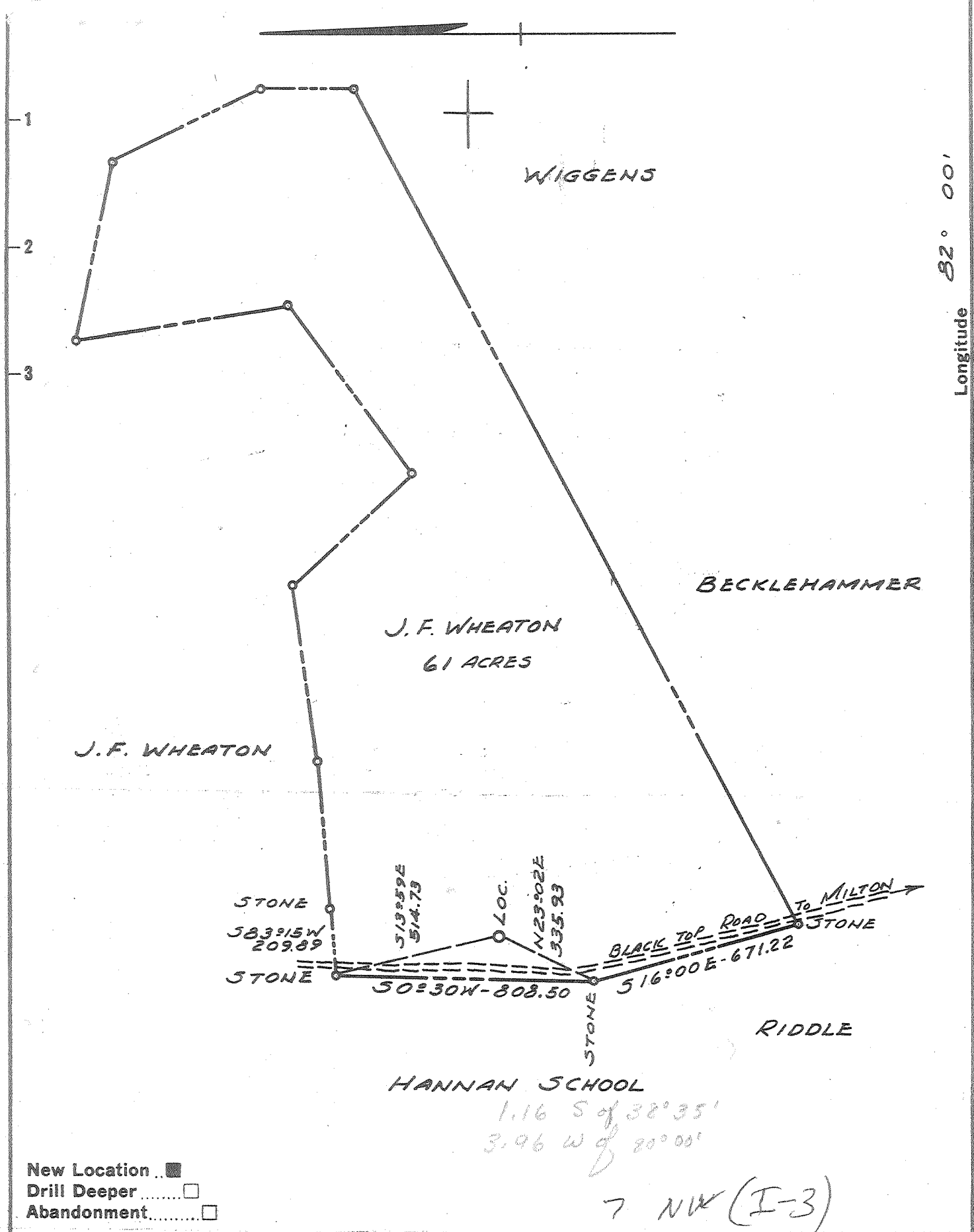


M

Latitude 38° 35'

Longitude 82° 00'



- New Location
- Drill Deeper
- Abandonment

Company PEAKE PETROLEUM CO.

Address CLEVELAND 14, OHIO

Farm J. F. WHEATON

Tract 1 Acres 61.00 Lease No. \_\_\_\_\_

Well (Farm) No. 1 Serial No. 129

Elevation (Spirit Level) 738.0

Quadrangle GLENWOOD-SE

County MASON District HANNAN

Engineer John W. Rudwick

Engineer's Registration No. 2544

File No. \_\_\_\_\_ Drawing No. \_\_\_\_\_

Date 6-25-62 Scale 1" = 400'

STATE OF WEST VIRGINIA  
DEPARTMENT OF MINES  
OIL AND GAS DIVISION  
CHARLESTON

WELL LOCATION MAP  
FILE NO. MAS-73

+ Denotes location of well on United States Topographic Maps, scale 1 to \_\_\_\_\_ latitude and longitude lines being represented by border lines as shown.

- Denotes one inch spaces on border line of original tracing.

No Samples 6-6-0 Deep Well



STATE OF WEST VIRGINIA  
DEPARTMENT OF MINES  
OIL AND GAS DIVISION 21

Quadrangle GLENWOOD

Permit No. MAS-73

WELL RECORD

Oil or Gas Well Gas  
(KIND)

Company Peake Petroleum Company  
Address 1310 Williamson Bldg., Cleve. 14, Ohio  
Farm J. F. Wheaton Acres 61.00  
Location (waters) R. Fork of Eighteen Mile Cr.  
Well No. 129 Elev. 738.0  
District Hanna County Mason  
The surface of tract is owned in fee by J. F. Wheaton  
Address \_\_\_\_\_  
Mineral rights are owned by J. F. Wheaton  
Address \_\_\_\_\_  
Drilling commenced August 31, 1962  
Drilling completed December 7, 1962  
Date Shot \_\_\_\_\_ From \_\_\_\_\_ To \_\_\_\_\_  
With \_\_\_\_\_  
Open Flow 8 /10ths Water in 2 Inch  
\_\_\_\_\_ /10ths Merc. in \_\_\_\_\_ Inch  
Volume 119 M Cu. Ft.  
Rock Pressure \_\_\_\_\_ lbs. \_\_\_\_\_ hrs.  
Oil \_\_\_\_\_ bbls., 1st 24 hrs.  
WELL ACIDIZED See Reverse Side  
WELL FRACTURED See Reverse Side

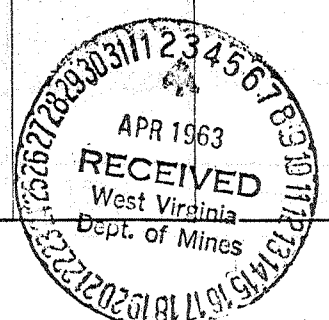
Casing and Tubing	Used in Drilling	Left in Well	Packers
16			Kind of Packer <u>Parmaco Gas Anchor</u> Size of <u>3 1/2" x 5 1/2"</u>
13	24'	24'	
10	380'	380'	Depth set <u>4092</u>
8 3/4	898'	898'	
6 7/8	1855'	Pulled	Perf. top <u>4109</u> Perf. bottom <u>4117</u>
5 3/16	2086'	2086'	
3	4124'	4124'	Perf. top _____ Perf. bottom _____
2			
Liners Used _____			

CASING CEMENTED 3" SIZE \_\_\_\_\_ No. Ft. \_\_\_\_\_ Date \_\_\_\_\_  
COAL WAS ENCOUNTERED AT 348 FEET 12 INCHES  
\_\_\_\_\_ FEET \_\_\_\_\_ INCHES FEET \_\_\_\_\_ INCHES  
\_\_\_\_\_ FEET \_\_\_\_\_ INCHES FEET \_\_\_\_\_ INCHES

RESULT AFTER TREATMENT 59 MCF  
ROCK PRESSURE AFTER TREATMENT 950# in 13 hrs.  
Fresh Water \_\_\_\_\_ Feet Salt Water \_\_\_\_\_ Feet

Formation	Color	Hard or Soft	Top	Bottom	Oil, Gas or Water	Depth	Remarks
Red Clay			0	20			
Sand			20	24			
Red Clay			24	30	Water	30'	1 BPH
Red & White Clay			30	85			
Sand			85	102	Water	95'	Hole Full of Fresh Water
Red Rock			102	310			
Slate (dark)			310	330			
Slate & Shells			330	348			
Coal			348	349			
Slate			349	410			
Red Rock			410	430			
Slate & Shells			430	610			
Red Rock			610	625			
Slate & Shells			625	751			
Sand			751	820			
Settling Sand			820	850	Water	825'	Hole Full of Salt Water
Slate & Shells			850	930			
Sand			930	947	Water	947'	Hole Full
Settled Sand			947	985			
Slate & Shells			985	1015			
Sand			1015	1030			
Slate & Shells			1030	1072			
Sand			1072	1150			
Slate & Shells			1150	1240			
Broken Sand			1240	1268			
Slate & Shells			1268	1311			
Salt Sand			1311	1350			
Slate & Shells			1350	1386			
Black Lime			1386	1410			
Slate & Shells			1410	1538			

(over)



Formation	Color	Hard or Soft	Top <i>21</i>	Bottom	Oil, Gas or Water	Depth Found	Remarks
Sand			1538	1638			
BIG LIME			1638	1753			
INJUN SAND			1753	1838	Water	1777-1790	Hole Full
Black Lime			1838	1844			
Sandy Lime			1844	1880			
Sand			1880	1892	Water	1889-1891	7 bailers every 2 hrs.
Slate			1892	1894			
Sand			1894	1969			
WEIR SAND			1969	2011			
Sand Shells			2011	2044			
Slate & Shells			2044	2268			
Coffee Shale			2268	2279			
BEREA			2279	2306	Oil, Water	2283-2288	4 bailers of oil & water every 72hrs.
Slate & Shells			2306	3230			
Brown Shale			3230	3270			
White Slate			3270	3315			
Brown Shale			3315	3390			
White Slate			3390	3505			
Brown Shale			3505	3636	Oil	3600	Rainbow
Grey Shale			3636	3919	Gas	3648-3654	NEG
Brown Shale			3919	4057			
CORNIFEROUS			4057	4130	Gas	4130	1/10 W-2"
ORISKANY SAND			4130	4147	Gas	4130-4136	NEG
CORNIFEROUS			4147		Gas	4141-4147	8/10 W-2"
TOTAL DEPTH -				4156			
							4057 736 3319
3-1-63 Acidized with 8000 gals. of Dowell intensified acid.							
3-7-63 Fractured with 415 bbls. of water with J-100, 3000# 20/40 Sand							
3" tubing cemented above packer Wheat Grain broke off on 1st. collar down the hole							
Well Logged by Schlumberger:							
Gamma-Ray Neutron - 1800-4136							
Formation Density - 3900-4136							
Temperature - 2000-4138							
Induction - 3900-4136							
REFER TO WELL FILE FOR DETAILED TREATMENT INFORMATION							

Date April 1, 19 63

APPROVED Peake Petroleum Company, Owner

By \_\_\_\_\_  
(Title)  
J. W. F. Rudnicki, Chief Engineer