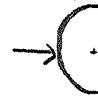


LATITUDE 37° 27' 30"

8° 35' 00"

LONGITUDE

WITHIN CIRCLE



7'5 OGIS topo location

7.5' loc 1.80 S  
0.09 W

15' loc 4.16 S  
(calc.) 0.09 W

Company \_\_\_\_\_

Farm \_\_\_\_\_

Quad WELCH 7 1/2' + 15' N

County Mc DOWELL

District BROWNS CREEK

WELL LOCATION MAP

File No. 047-1716

Scale 1:200  
1/5" = 1' 0"

Bob 4/15 Bros

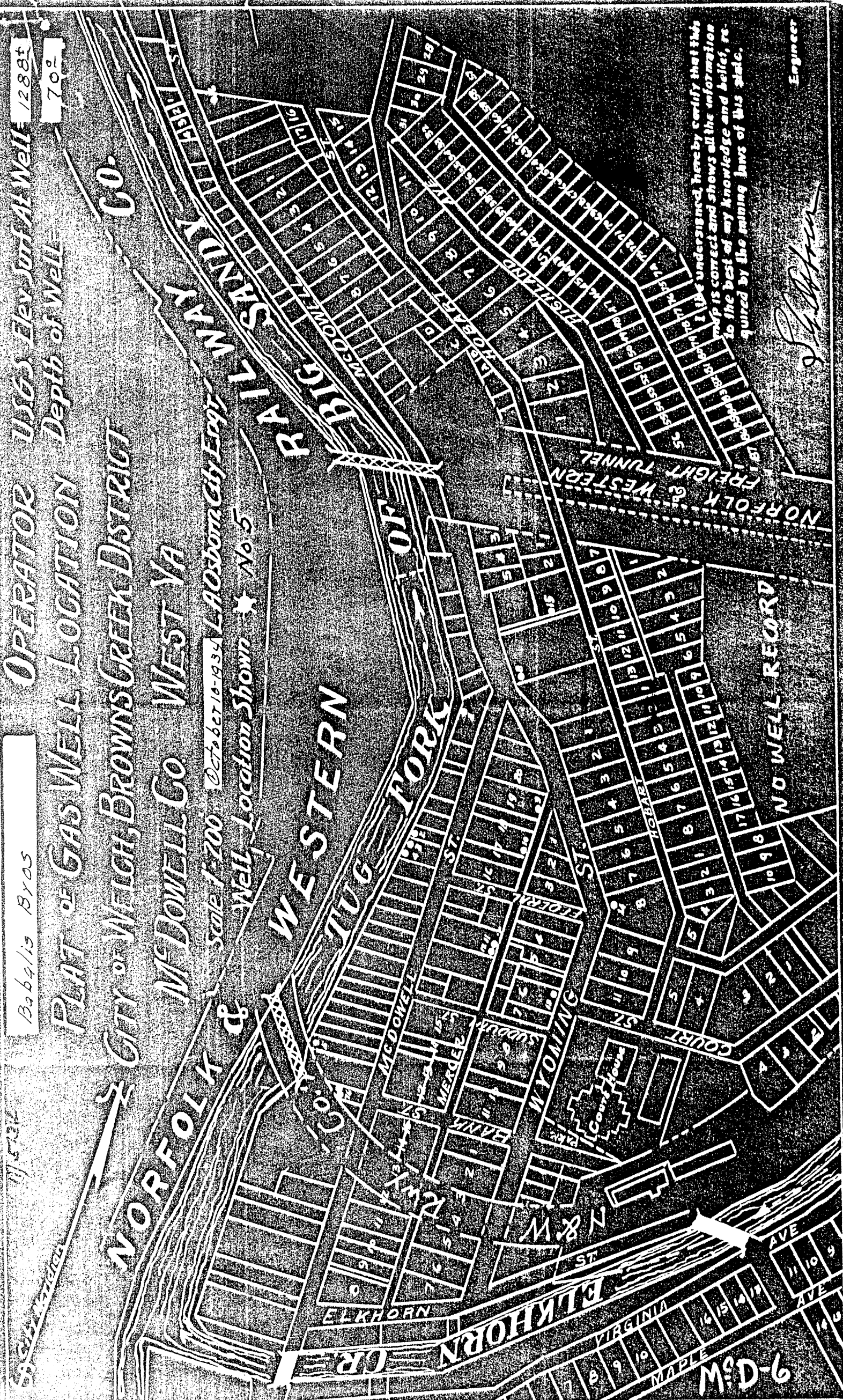
OPERATOR  
USGS ELEV SUM AT WELL 1288 ft

PLAT OF GAS WELL LOCATION  
DEPTH OF WELL 70 ft

1288 ft  
70 ft

CITY OF WELCH, BROWNS CREEK DISTRICT  
MCDOWELL CO WEST VA

Scale 1:200  
Well Location Shown No 5



I, the undersigned, hereby certify that this map is correct and shows all the information required by the mining laws of this state.

*[Signature]*  
Engineer

NO WELL RECORD

9-D-11

CITY OF WELCH NO. 5.

McD-6.

By Babalis Brothers.

Browns Creek Dist.

(NO PERMIT)