

**Pocahontas Land Corporation - Surface and Mineral
Penn Virginia Oil and Gas Corporation - Oil and Gas
Appalachian Forest A, LLC - Timber**

Notes:
 No Dwellings exist within 200 feet of Pocahontas Land 60
 No Domestic Wells within 1000' of Gas Well Pocahontas Land 60
 (+) Denotes location of well on USGS map.
 Property Information taken from McDowell Co. Tax Records
 Pocahontas Land Corporation Tract Lines - - - - -

FILE #: \\filestation1\station4d\work\
 DRAWING #: Cabot2014\WW-6_Poca60.pdf
 SCALE: see bar scale above
 MINIMUM DEGREE OF ACCURACY: 1 part in 2500
 PROVEN SOURCE OF ELEVATION: sub meter GPS location

I, THE UNDERSIGNED, HEREBY CERTIFY THAT THIS PLAT IS CORRECT TO THE BEST OF MY KNOWLEDGE AND BELIEF AND SHOWS ALL THE INFORMATION REQUIRED BY LAW AND THE REGULATIONS ISSUED AND PRESCRIBED BY THE DEPARTMENT OF ENVIRONMENTAL PROTECTION.

Signed: *[Signature]*
 R.P.E.: _____ L.L.S.: 1065



(+) DENOTES LOCATION OF WELL ON UNITED STATES TOPOGRAPHIC MAPS
WVDEP
OFFICE OF OIL & GAS
 601 57TH STREET
 CHARLESTON, WV 25304



DATE: August 6, 2014
 OPERATOR'S WELL #: Pocahontas Land 60
 API WELL #: 47 047 00105 P
 STATE COUNTY PERMIT

Well Type: Oil Waste Disposal Production Deep
 Gas Liquid Injection Storage Shallow

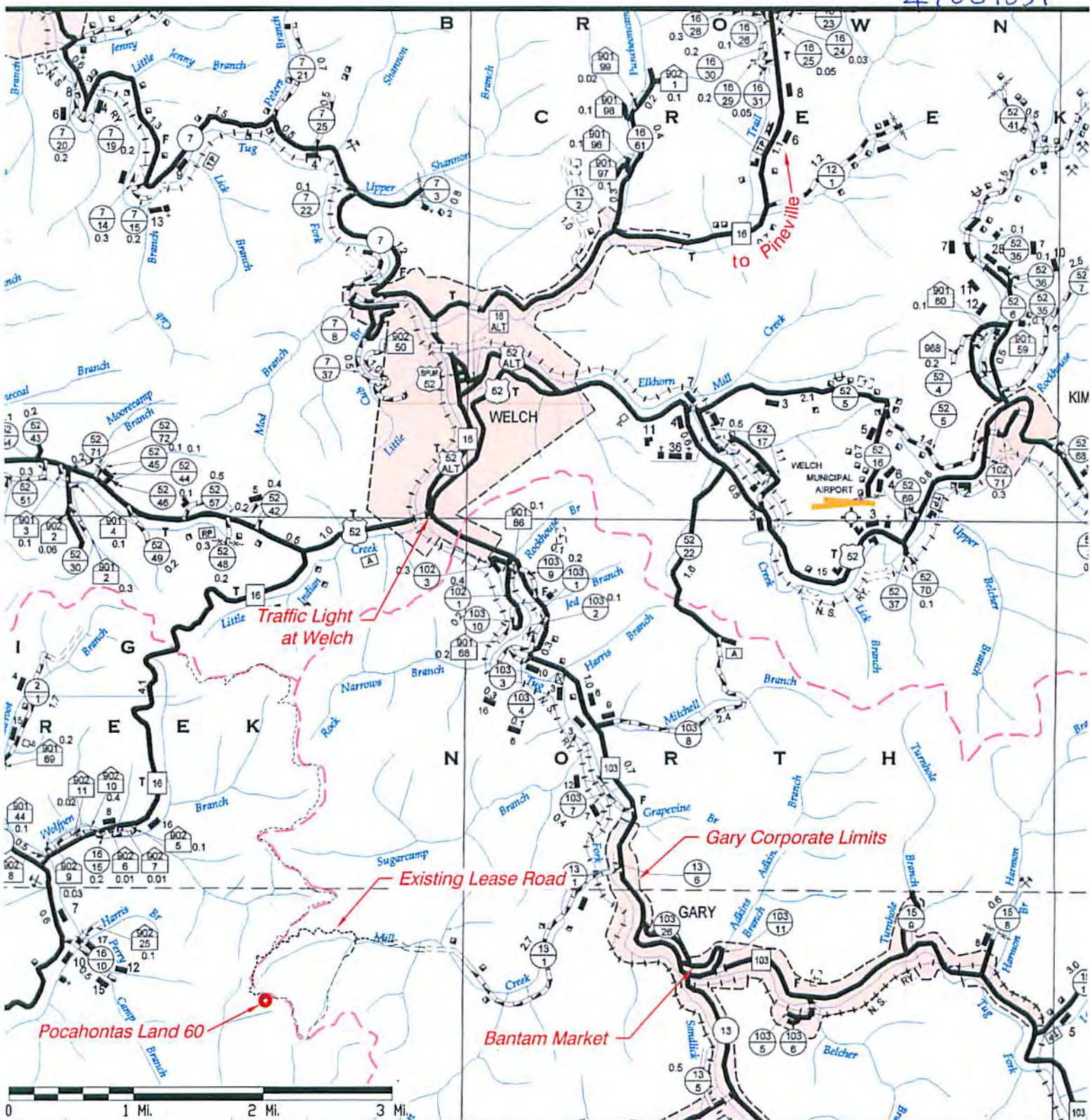
WATERSHED: Mountain Fk of Big Creek of Dry Fork of Tug Fork ELEVATION: 2419.98
 COUNTY/DISTRICT: 047-McDowell / 2-Big Creek QUADRANGLE: 359 - GARY

SURFACE OWNER: Pocahontas Land Corporation ACREAGE: 20184.29
 OIL & GAS ROYALTY OWNER: Penn Virginia Oil & Gas Corporation ACREAGE: 47,520

DRILL CONVERT DRILL DEEPER REDRILL FRACTURE OR STIMULATE
 PLUG OFF OLD FORMATION PERFORATE NEW FORMATION PLUG & ABANDON
 CLEAN OUT & REPLUG OTHER CHANGE (SPECIFY): _____

TARGET FORMATION: Berea Sandstone ESTIMATED DEPTH: 5166
 WELL OPERATOR Cabot Oil & Gas Corporation DESIGNATED AGENT Whitney Johnson
 Address Five Penn Center West, Suite 401 Address P.O. Box 450
 City Pittsburgh State PA Zip Code 15276 City Glasgow State WV Zip Code 25086

07/31/2015



Driving Directions:

1. From Cabot's Pineville, WV office, take WV Rt.10 South 0.2 miles to junction with WV Rt.16 South at the bridge over the Guyandotte River.
2. Turn right at the bridge onto Rt.16 South (Welch-Pineville Road) for ±19 miles to the junction of US Rt.52 in Welch, WV at the traffic light. At the intersection with the traffic light, proceed straight ahead on West Virginia Rt.103.
3. Follow West Virginia Rt.103 for ±3.9 miles to the community of Gary; observe a newly refurbished bridge at the first right turn in Gary.
4. Turn right across the new bridge onto McDowell County Rt.13/1 and proceed 2.8± miles up Mill Creek to a fork. County maintenance ends @ 2.7 miles. Take the right hand fork and proceed 0.9 miles more or less up the Right Fork of Mill Creek to the top of the ridge and an intersection.
5. Turn left at the intersection at the top of the ridge and proceed ±½ mile to the existing Pocahontas Land 60 well site.