

WW-7
8-30-06



West Virginia Department of Environmental Protection
Office of Oil and Gas
WELL LOCATION FORM: GPS

API: 47-047-00178 WELL NO.: 10144

FARM NAME: Olga Coal Company

RESPONSIBLE PARTY NAME: CNX Gas Company LLC

COUNTY: McDowell DISTRICT: Big Creek

QUADRANGLE: Davy, WV

SURFACE OWNER: Alawest, Inc.

ROYALTY OWNER: Alawest, Inc.

UTM GPS NORTHING: 4,136,807 m

UTM GPS EASTING: 441,572 m GPS ELEVATION: 570 m *1826 FT*

The Responsible Party named above has chosen to submit GPS coordinates in lieu of preparing a new well location plat for a plugging permit or assigned API number on the above well. The Office of Oil and Gas will not accept GPS coordinates that do not meet the following requirements:

- Datum: NAD 1983, Zone: 17 North, Coordinate Units: meters, Altitude: height above mean sea level (MSL) – meters.
- Accuracy to Datum – 3.05 meters
- Data Collection Method:

Survey grade GPS : Post Processed Differential

Real-Time Differential

Mapping Grade GPS : Post Processed Differential

Real-Time Differential

- Letter size copy of the topography map showing the well location.**

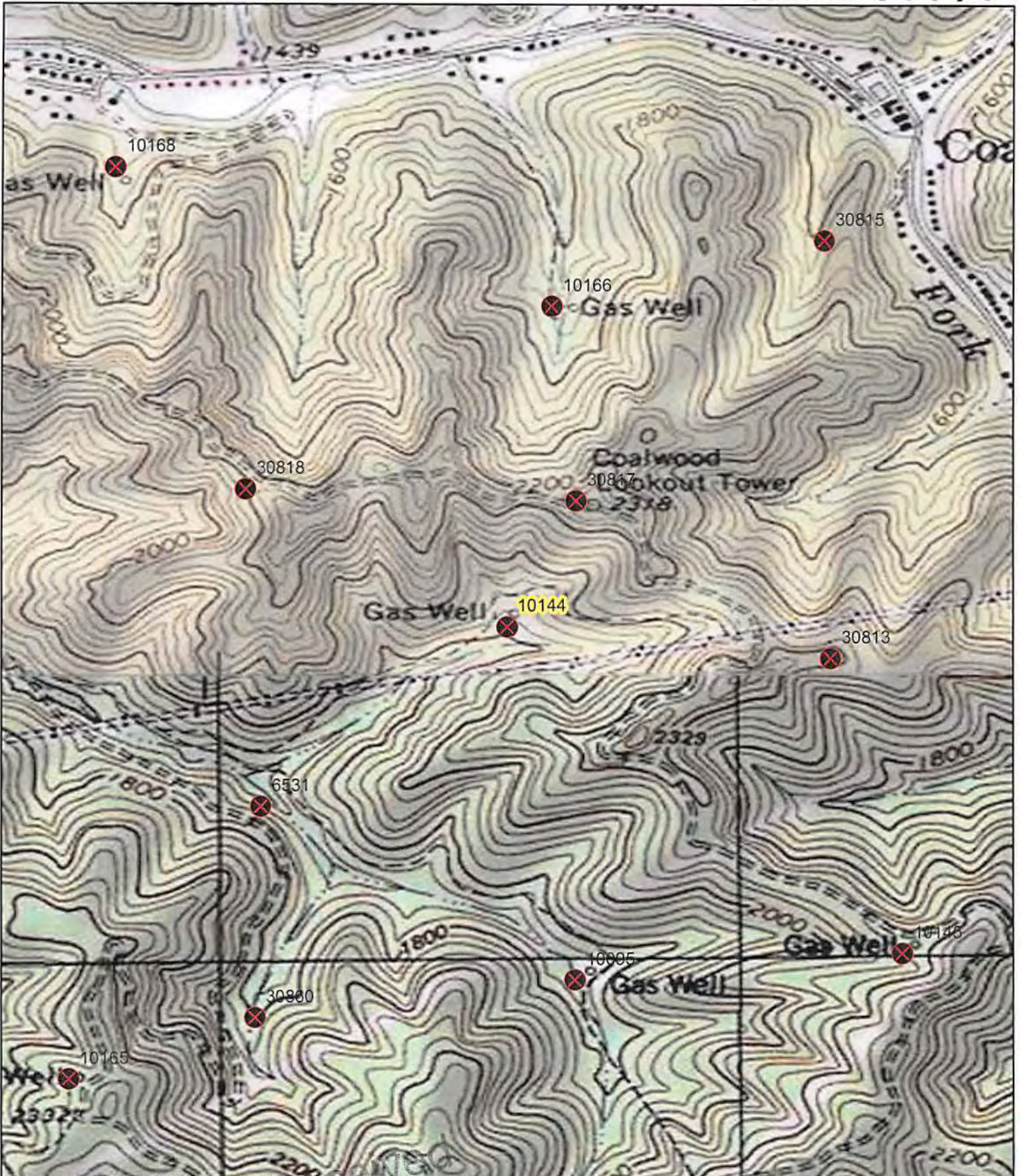
I the undersigned, hereby certify this data is correct to the best of my knowledge and belief and shows all the information required by law and the regulations issued and prescribed by the Office of Oil and Gas.

J. M. [Signature] Production Coord. 3-28-14
Signature Title Date

Received

APR - 1 2014

Office of Oil and Gas
WV Dept. of Environmental Protection



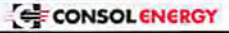
subsidaries and affiliates, collectively "CEI", make no representations or warranties of any kind or character concerning the completeness or accuracy of this information and assumes no responsibility or liability of any kind for such information. The Recipient of this information acknowledges and agrees that the use of such information, in consideration of CEI providing this information, the Recipient forever waives and releases any and all claims or causes of action the Recipient may ever have against CEI, its officers, directors, employees or agents relating to or resulting or arising from its use of the information. Acceptance of this information by the recipient constitutes agreement with all the terms and conditions in the notice.

Copyright © 2013 National Geographic Society. Reprinted.

APR - 7 2014
 Office of Oil and Gas
 Office of Oil and Gas
 U.S. Dept. of Environmental Protection



0 500 1,000 Feet



Date: 1/24/2014 Prepared By: KK
 Revisions: Approved By: BS

PROPOSED PLUGGING
 WELL NUMBER 10144
 API# 47-047-00178
 GENERAL LOCATION MAP

This map is property of CONSOL Energy Inc. and contains information that is proprietary and confidential in nature and may not be copied or reproduced without prior written consent.