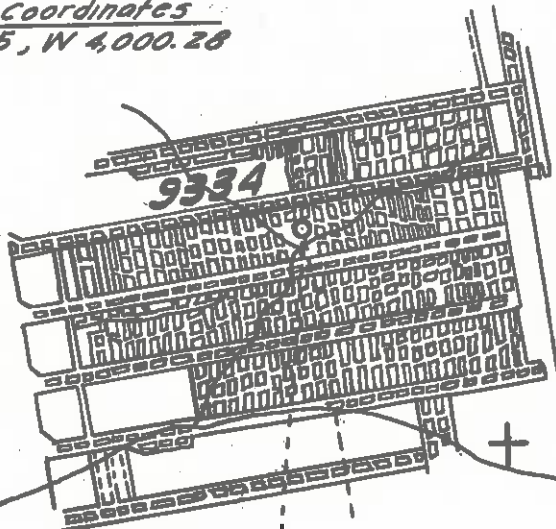


Latitude 37° 30' 35.15"

N. R. & P. Coordinates
N 35349.55, W 4,000.28



TOP LOC. ??

2.61 S
3.49 W

PUNcheon CAMP BRANCH

Longitude 81° 30' 15.15"

NEW RIVER & POCAHONTAS CONSOLIDATED COAL CO.

BENCH MARK DESCRIPTION

U.S. C. & G. S. Disk Located About 2.5 Miles Northeast Along State Highway 16 From the Court House At Welch, About 0.15 Mile East Of The Welch Elementary School, Set Vertically In The South Face Of A Large Rock Cut, 21' North Of Center Line Of Highway, 445' East Of The West End Of The Rock Cut, In Line With The Extended East Face Of The Fourth Brick House East Of The School & About 2' Above Level Of Highway. Elev. 1452.67

DEGREE OF ACCURACY
One Part In 2,500

calc 15' loc
2.50 S
3.54 W

2443 T-Rail, 2 White Oak Pointers

512° 58' 28" W
1380.42'

54° 10' 46" E
1217.54'

2353-D. Plug In Set Stone, Black Oak & Hickory Pointers.

2437-T-Rail, 2 Chestnut Oak & Chestnut Oak Stump Pointers.

2446, T-Rail, Hickory Pointer

2452-F, Set Stone

NOTE

No 3 Pocahontas Seam Operated Mine is Shut Down. Location is In Worked Out Area.

S- 2.66
W- 3.55

POCAHONTAS LAND CORP.

I, the undersigned, hereby certify that this map is correct to the best of my knowledge and belief and shows all the information required by Paragraph 6 of the rules and regulations of the oil and gas section of the mining laws of West Virginia.

Sybert R. Howell

New Location ..
Drill Deeper
Abandonment

Company	UNITED FUEL GAS CO.
Address	CHARLESTON, W. VA.
Farm	NEW RIVER & POCAHONTAS CONSOLIDATED COAL CO.
Tract	Acres 6891⁹⁴ Lease No. 59717
Well (Farm) No.	Serial No. 9334
Elevation (Spirit Level)	1668.47'
Quadrangle	WELCH N 5
County	MCDOWELL District BROWNS CRK.
Engineer	<i>Sybert R. Howell</i>
Engineer's Registration No.	2529
File No.	66-407 Drawing No.
Date	MAY 8, 1964 Scale 1" = 1000'

STATE OF WEST VIRGINIA
DEPARTMENT OF MINES
OIL AND GAS DIVISION
CHARLESTON

WELL LOCATION MAP
FILE NO. **MCD-281**

+ Denotes location of well on United States Topographic Maps, scale 1 to 62,500, latitude and longitude lines being represented by border lines as shown.
- Denotes one inch spaces on border line of original tracing.

Sampler 2400'-3600' 3855'-4020' 6-6-60



STATE OF WEST VIRGINIA
DEPARTMENT OF MINES
OIL AND GAS DIVISION 25

Quadrangle Welch

WELL RECORD

Permit No. MCD-281

Oil or Gas Well Gas
(KIND)

Company United Fuel Gas Company
Address P. O. Box 1273 Charleston, W. Va. 25325
New River & Pocahontas Consolidated Coal Co.
Farm Acres 6891.94
Location (waters) Puncheon Camp Branch
Well No. 9334 Elev. 1668.47'
District Browns Creek County McDowell
The surface of tract is owned in fee by _____
Address _____

Casing and Tubing	Used in Drilling	Left in Well	Packers
Size			Kind of Packer
16			
13 3/8	24'	Cemented to surf.	
10			Size of
8 9-5/8"	65'	Cemented to surf.	
			Depth set
			Perf. top
			Perf. bottom
			Perf. top
			Perf. bottom

Mineral rights are owned by New River & Pocahontas Consolidated Coal Co.
Suite 600 Two Penn Center Plaza Philadelphia 2, Penna.
Drilling commenced 10-3-64
Drilling completed 10-14-64
Date Shot _____ From _____ To _____
With _____
Open Flow 72 /10ths Water in 2 Inch
/10ths Merc. in _____ Inch
Volume 358,000 - Berea Cu. Ft.
Rock Pressure 970 lbs. 72 hrs.
Oil _____ bbls., 1st 24 hrs.
WELL ACIDIZED _____
WELL FRACTURED _____

CASING CEMENTED	SIZE	No. Ft.	Date
COAL WAS ENCOUNTERED AT	<u>500</u> FEET	<u>70</u> INCHES	
	<u>650</u> FEET	<u>70</u> INCHES	

RESULT AFTER TREATMENT _____
ROCK PRESSURE AFTER TREATMENT _____
Fresh Water _____ Feet Salt Water _____ Feet

Formation	Color	Hard or Soft	Top	Bottom	Oil, Gas or Water	Depth	Remarks
Sand			0	30	Test before fracture - show		
Sand & Shale			30	125	Fractured Berea 10-20-64 with 710 bbls.		
Sand & Shale			125	240	water, 600 bbls. sand laden fluid,		
White Sand			240	254	60,000# 20-40 sand and 500 gallons		
Sand and Shale			254	500	mud acid.		
Coal			500	505	Final open flow after fracture - 72/10		
White Sand			505	515	W 2" 358 M		
Sand & Shale			515	650			
Coal			650	655	Perforated at 3957' and 3979'		
Gray Shale			655	665			
Sand and Lime			665	698			
White Sand			698	755	Shut in 11-3-64 in 4 1/2" casing.		
Gray Shale			755	825			
White Sand			825	865	LOGS RUN:		
Sand, Shale & Red Rock			865	1060	Gamma Ray		
Gray Shale			1060	1375	Density		
Ravencliff			1375	1440	Induction		
Sand, Lime, Shale & Red Rock			1440	2020	Temperature		
Upper Maxon			2020	2085			
Sand, Lime, Shale & Red Rock			2085	2423			
Maxon			2423	2431			
Gray Shale			2431	2540			
Little Lime			2540	2620			
Pencil Sand Shale			2620	2700			
Big Lime			2700	3287			
Red Injun Sand			3287	3302			
Weir Sand			3302	3525			
Gray Shale			3525	3928			
Coffee Shale			3928	3948			
Berea Sand			3948	3962			



Formation	Color	Hard or Soft	Top ²⁵	Bottom	Oil, Gas or Water	Depth Found	Remarks
Coffee	Shale		3962	3972			
Berea	Sand		3972	3981			
Broken	Shale		3981	4038			
Total	Depth		4038'				

Date January 15, 1965

APPROVED UNITED FUEL GAS COMPANY, Owner

By S. K. Terrell
 (Title)
 Supt., Civil Engineering Dept.