

WW-7
8-30-06



West Virginia Department of Environmental Protection
Office of Oil and Gas
WELL LOCATION FORM: GPS

API: 47-047-00394 WELL NO.: 10955

FARM NAME: Olga Coal Mining Corp.

RESPONSIBLE PARTY NAME: CNX Gas Company LLC

COUNTY: McDowell DISTRICT: Sandy River

QUADRANGLE: Davy, WV

SURFACE OWNER: Alawest, Inc.

ROYALTY OWNER: Alawest, Inc.

UTM GPS NORTHING: 4,139,330 m

UTM GPS EASTING: 435,521 m GPS ELEVATION: 689 m *2205 FT.*

The Responsible Party named above has chosen to submit GPS coordinates in lieu of preparing a new well location plat for a plugging permit or assigned API number on the above well. The Office of Oil and Gas will not accept GPS coordinates that do not meet the following requirements:

1. Datum: NAD 1983, Zone: 17 North, Coordinate Units: meters, Altitude: height above mean sea level (MSL) – meters.
2. Accuracy to Datum – 3.05 meters
3. Data Collection Method:
Survey grade GPS : Post Processed Differential

Real-Time Differential

Mapping Grade GPS : Post Processed Differential

Real-Time Differential

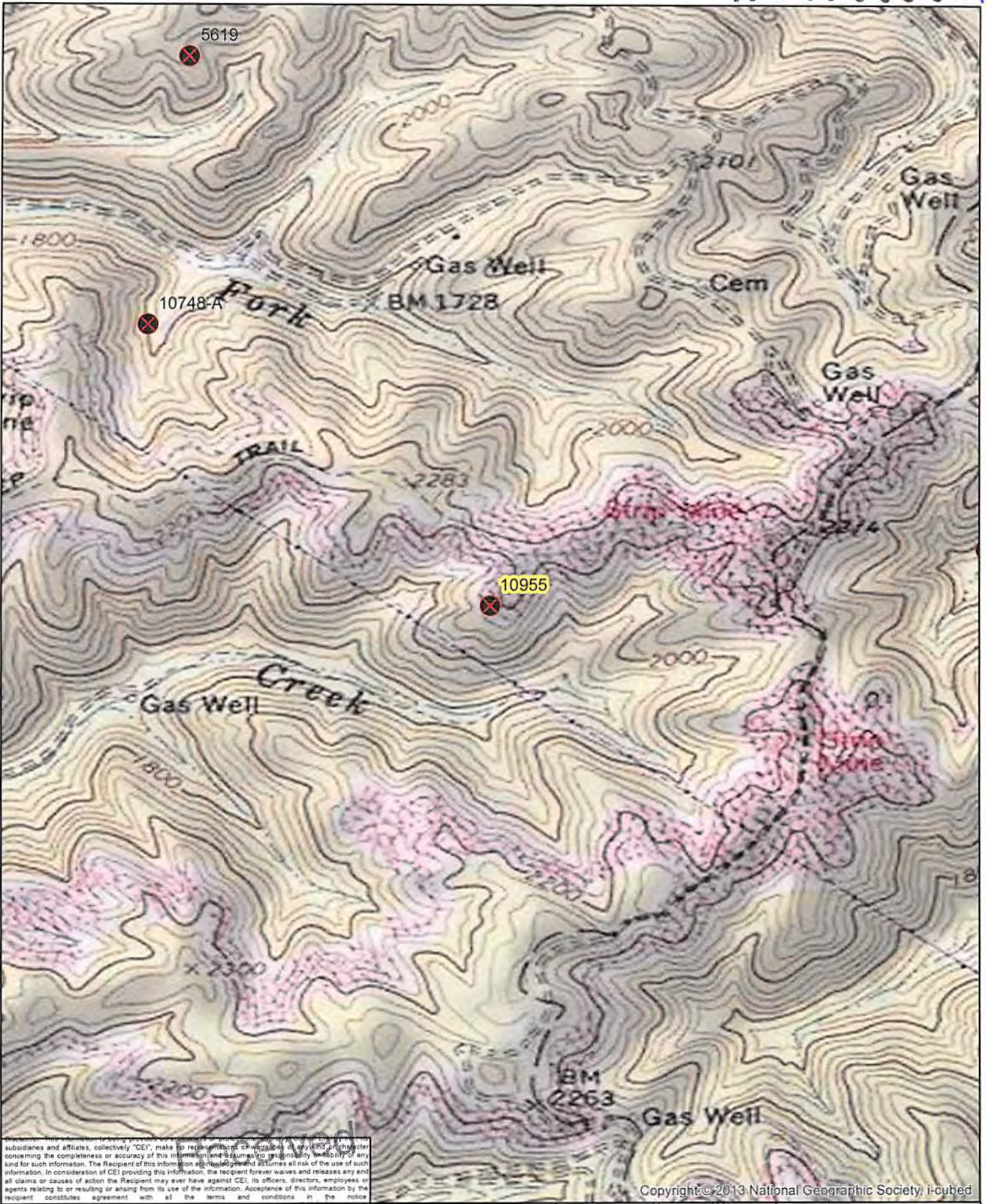
4. **Letter size copy of the topography map showing the well location.**

I the undersigned, hereby certify this data is correct to the best of my knowledge and belief and shows all the information required by law and the regulations issued and prescribed by the Office of Oil and Gas.

[Signature]
Signature

Prod. Coord.
Title

4/21/14
Date



subsidaries and affiliates, collectively "CEI", make no representations or warranties of any kind or character concerning the completeness or accuracy of this information and assumes no responsibility or liability of any kind for such information. The Recipient of this information agrees to hold CEI and its subsidiaries and affiliates harmless from and assumes all risk of the use of such information. In consideration of CEI providing this information, the recipient forever waives and releases any and all claims or causes of action the Recipient may ever have against CEI, its officers, directors, employees or agents relating to or resulting or arising from its use of the information. Acceptance of this information by the recipient constitutes agreement with all the terms and conditions in the notice

Copyright © 2013 National Geographic Society, i-cubed

APR - 7 2014
 Office of Oil and Gas
 WV Dept. of Environmental Protection

Date: 1/24/2014		Prepared By: KK	
Revisions:		Approved By: BS	
This map is property of CONSOL Energy Inc. and contains information that is proprietary and confidential in nature and may not be copied or reproduced without prior written consent.			

CONSOL ENERGY

PROPOSED PLUGGING
 WELL NUMBER 10955
 API# 47-047-00394
 GENERAL LOCATION MAP