

STATE PLANE COORDINATES

(NAD 27 Datum)

N 113451.8426

E 1767796.2807

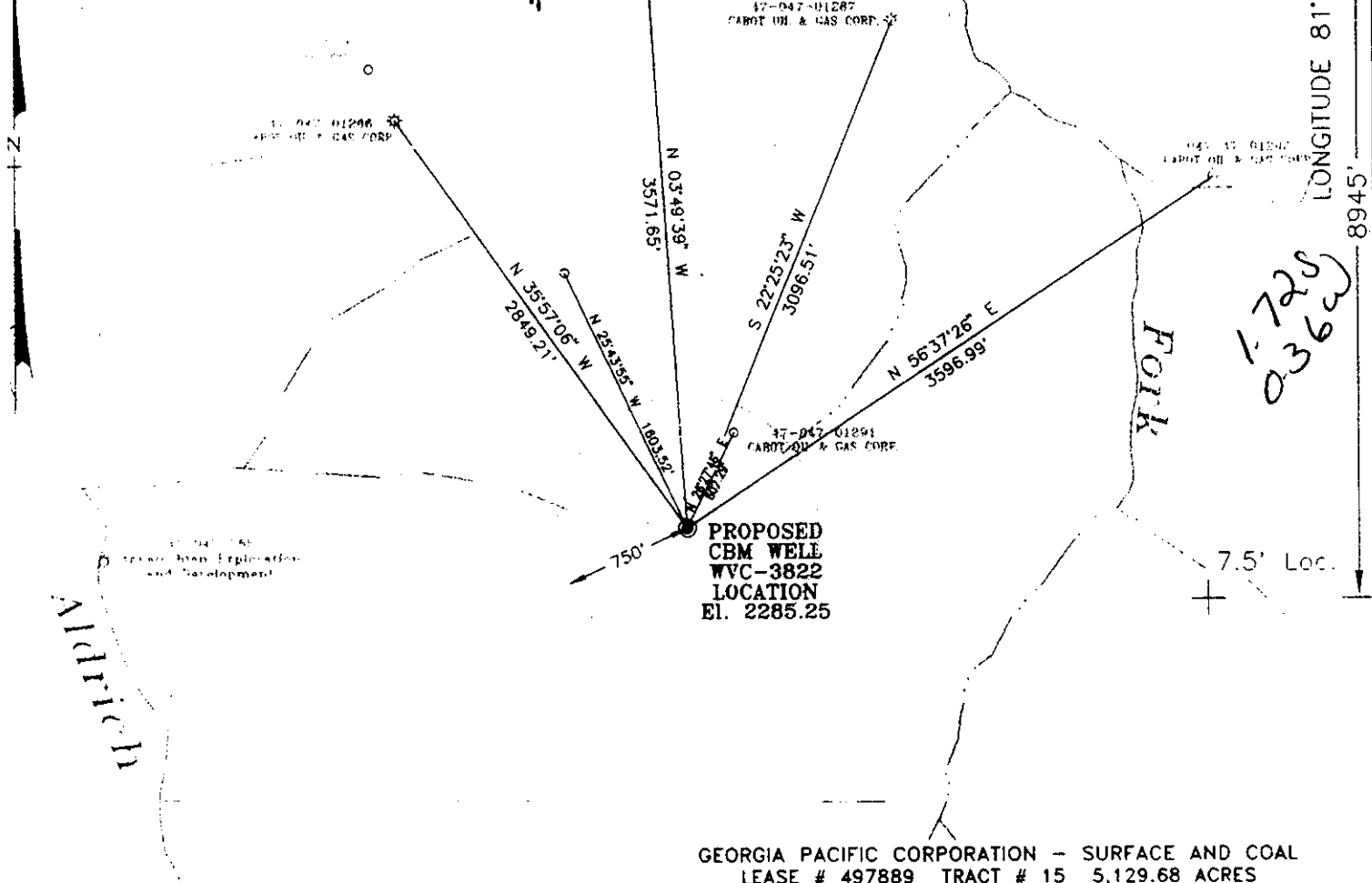
Latitude 37 18 31.7576

Longitude 81 47 53.9785

LATITUDE 37° 20' 00"

LONGITUDE 81° 47' 30"

*Amie
4/29/98*

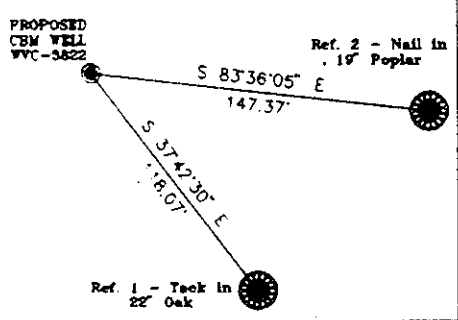


*1.72
0.36*

**PROPOSED
CBM WELL
WVC-3822
LOCATION
El. 2285.25**

GEORGIA PACIFIC CORPORATION - SURFACE AND COAL
LEASE # 497889 TRACT # 15 5,129.68 ACRES
POCAHONTAS LAND CORPORATION - OIL & GAS ONLY
CABOT OIL AND GAS CORPORATION - OIL & GAS LESSEE
NATIONAL MINES CORPORATION - COAL LESSEE

REFERENCES

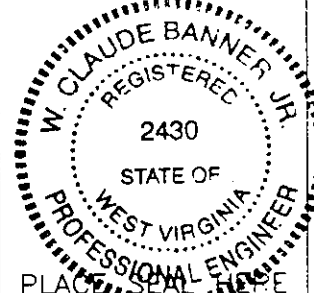


Note: No water users are known within 1000' of location
(+) Denotes location of well on USGS map.

FILE No. ERE-980203/SF
DRAWING NAME WVC-3822\GW-PLAT.DWG
SCALE 1" = 1000'
MINIMUM DEGREE OF ACCURACY 1 : 2500
PROVEN SOURCE OF ELEVATION USGS B.M.
W-191-1958

I THE UNDERSIGNED, HEREBY CERTIFY THAT THIS PLAT IS CORRECT TO THE BEST OF MY KNOWLEDGE AND BELIEF AND SHOWS ALL THE INFORMATION REQUIRED BY LAW AND THE REGULATIONS ISSUED AND PRESCRIBED BY THE DEPARTMENT OF MINES.

(SIGNED) *W. Claude Banner Jr.*
R.P.E. _____ R.P.S. _____



STATE OF WEST VIRGINIA
DIVISION OF ENVIRONMENTAL PROTECTION
OFFICE OF OIL AND GAS
NITRO, WV

DATE FEBRUARY 5, 19 98
OPERATOR'S WELL No. WVC-3822
API WELL No. 47 - 047 01338-C
STATE COUNTY PERMIT

WELL TYPE: OIL GAS CBM LIQUID INJECTION WASTE DISPOSAL
(IF "GAS") PRODUCTION X STORAGE DEEP SHALLOW
LOCATION: ELEVATION 2285.25 WATER SHED ALDRICH FORK OF BRADSHAW CREEK
DISTRICT SANDY RIVER COUNTY McDOWELL
QUADRANGLE BRADSHAW, WV - VA

SURFACE OWNER GEORGIA PACIFIC CORPORATION TRACT # 15 ACREAGE 5,129.68
CBM ROYALTY OWNER POCAHONTAS LAND CORPORATION/GEORGIA PACIFIC CORPORATION LEASE ACREAGE 5879.29
LEASE No. 497889

PROPOSED WORK: DRILL X CONVERT DRILL DEEPER REDRILL FRACTURE OR
STIMULATE X PLUG OFF OLD FORMATION PERFORATE NEW
FORMATION OTHER PHYSICAL CHANGE IN WELL (SPECIFY) 6-6 383

PLUG AND ABANDON CLEAN OUT AND REPLUG
TARGET FORMATION PENNSYLVANIAN COALS ESTIMATED DEPTH 2145'
WELL OPERATOR EQUITABLE RESOURCES ENERGY COMPANY DESIGNATED AGENT DAVID DEAN
ADDRESS 1989 EAST STONE DRIVE ADDRESS P.O. DRAWER 40
KINGSPORT, TN 37660 BUCKHANNON, WV 26201

MCDOWELL 1338-C

WR-35

24-Apr-98
API # 47- 47-01338 C

State of West Virginia
Division of Environmental Protection
Section of Oil and Gas

Well Operator's Report of Well Work

Farm name: GEORGIA-PACIFIC-CORP. Operator Well No.: 3822

LOCATION: Elevation: 2,285.00 Quadrangle: BRADSHAW

District: SANDY RIVER County: MCDOWELL
Latitude: 8945 Feet South of 37 Deg. 20Min. 0 Sec.
Longitude 1906 Feet West of 81 Deg. 47 Min. 30 Sec.

Company: EQUITABLE RESOURCES EXP.
1989 E. STONE DR., P.O. BOX 1983
KINGSPORT, TN 37662-1983

Agent: DAVID A. DEAN

Inspector: OFIE HELMICK
Permit Issued: 04/27/98
Well work Commenced: 9/22/98
Well work Completed: 9/30/98
Verbal Plugging
Permission granted on: N/A
Rotary X Cable _____ Rig
Total Depth (feet) LTD - 2116 DTD - 2132
Fresh water depths (ft) 287
Salt water depths (ft) 1296

Size	Casing & Tubing	Used in Drilling	Left in Well	Cement Fill Up Cu. Ft.
11 3/4		38	38	GROUTED
8 5/8		309	309	94
4 1/2		2078	2078	584
2 3/8		1808	1808	N/A

Is coal being mined in area (Y/N)? N
Coal Depths (ft): 967/997/1119/1315/1385
1434/1589/1633/1675

OPEN FLOW DATA

Producing formation POCO 6 RIDER, POCO 6, POCO 5 Pay zone depth (ft) 1589
 Gas: Initial open flow N/A MCF/d Oil: Initial open flow _____ Bbl/d
 Final open flow N/A MCF/d Final open flow _____ Bbl/d
 Time of open flow between initial and final tests _____ Hours
 Static rock Pressure 245 psig (surface pressure) after 48 Hours
 COMMINGLED

Second producing formation FIRECREEK, POCO 9, POCO 8 Pay zone depth (ft) 1315
 Gas: Initial open flow _____ MCF/d Oil: Initial open flow _____ Bbl/d
 Final open flow _____ MCF/d Final open flow _____ Bbl/d
 Time of open flow between initial and final tests _____ Hours
 Static rock Pressure _____ psig (surface pressure) after _____ Hours

NOTE: ON BACK OF THIS FORM PUT THE FOLLOWING: 1). DETAILS OF PERFORATED INTERVALS, FRACTURING OR STIMULATING, PHYSICAL CHANGE, ETC. 2). THE WELL LOG WHICH IS A SYSTEMATIC DETAILED GEOLOGICAL RECORD OF ALL FORMATIONS, INCLUDING COALS ENTERED BY THE WELLBORE.

RECEIVED
Office of Oil & Gas
Permitting
FEB 05 1999
WV Division of
Environmental Protection

For: Michael P Jaskoski
EQUITABLE RESOURCES EXP. INC.
By: MICHAEL P JASKOSKI
Date: 1/27/99

FEB 19 1999

MCDOW 1338C

API #: 47-047-01338 C
OPERATOR WELL #: WVC3822
FARM NAME: GEORGIA PACIFIC CORP

1) DETAILS OF PERFORATED INTERVALS, FRACTURING OR STIMULATING, PHYSICAL CHANGE, ETC.

1ST STAGE - PERFORATED POCO SEAMS # 6 RIDER, 6 & 5 RIDER FROM 1589 - 1677 WITH 11 PERFORATIONS. FRACTURED ON 9/15/98 BY DOWELL WITH 70Q LE FOAM; 29988# 12/20 SAND, 953498 SCF N2, 462 TOTAL BBLs FLUID. BREAKDOWN PRESSURE 2166 PSI, MAX PRESSURE 4040 PSI, AVERAGE PRESSURE 3626 PSI, ISIP 1374 PSI, 1 MIN SIP 1350 PSI, 5 MIN SIP 1104 PSI. AVERAGE INJECTION RATE 20 BPM.

2ND STAGE - PERFORATED FIRECREEK, POCO SEAMS # 9 & 8 FROM 1315 - 1435.5 WITH 13 PERFORATIONS. FRACTURED ON 9/14/98 BY DOWELL WITH 70Q LE FOAM; 26186# 12/20 SAND, 893805 SCF N2. BREAKDOWN PRESSURE 2243, MAX PRESSURE 3942 PSI, AVERAGE PRESSURE 3595 PSI, ISIP 1799, 1-MIN SIP 1584, 5-MIN SIP 1195. AVERAGE INJECTION RATE 30 BPM

2) THE WELL LOG WHICH IS A SYSTEMATIC DETAILED GEOLOGICAL RECORD OF ALL FORMATIONS, INCLUDING COAL ENCOUNTERED BY THE WELLBORE.

SAND, SHALE & THIN COALS	0	1315
FIRECREEK	1315	1317
SAND, SHALE & THIN COALS	1317	1385
POCO #9	1385	1387
SAND, SHALE & THIN COALS	1387	1434
POCO #8	1434	1436
SAND, SHALE & THIN COALS	1436	1589
POCO #6 RIDER	1589	1591
SAND, SHALE & THIN COALS	1591	1633
POCO #6	1633	1635
SAND, SHALE & THIN COALS	1635	1675
POCO #5 RIDER	1675	1677
SAND, SHALE & THIN COALS	1677	2116
LOGGER'S TOTAL DEPTH		2116
DRILLER'S TOTAL DEPTH		2132

RECEIVED
Office of Oil & Gas
Permitting

FEB 05 1999

WV Division of
Environmental Protection