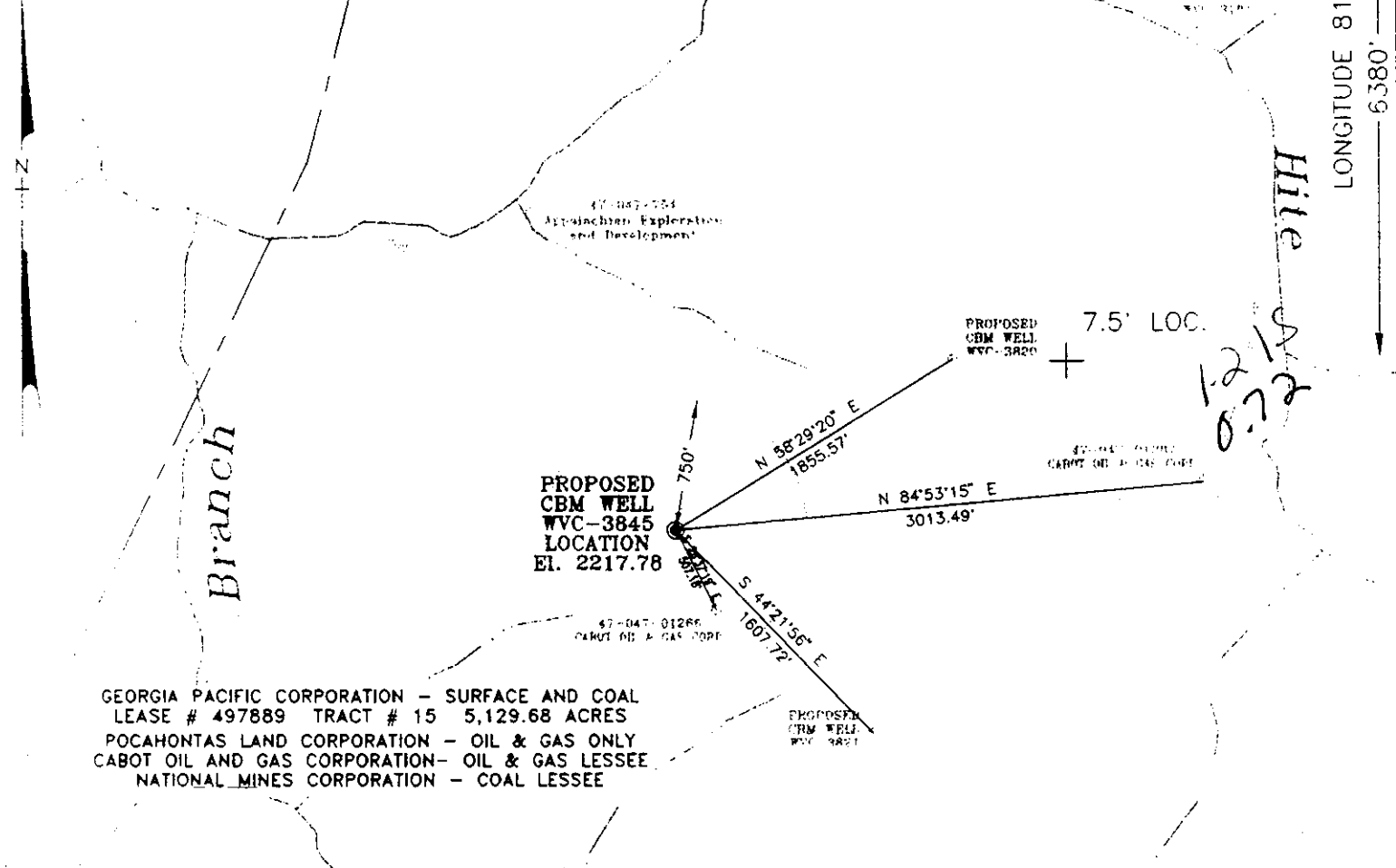


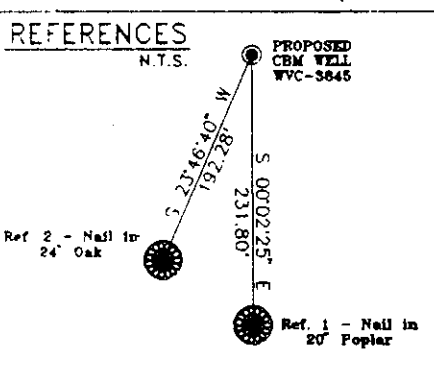
STATE PLANE COORDINATES
 (NAD 27 Datum)
 N 116032.4292
 E 1765968.6322
 Latitude 37 18 57.1139
 Longitude 81 48 16.8754

Janie
 4/29/98

3766'
 LATITUDE 37° 20' 00"
 LONGITUDE 81° 47' 30"
 6380'



GEORGIA PACIFIC CORPORATION - SURFACE AND COAL LEASE # 497889 TRACT # 15 5,129.68 ACRES
 POCAHONTAS LAND CORPORATION - OIL & GAS ONLY
 CABOT OIL AND GAS CORPORATION - OIL & GAS LESSEE
 NATIONAL MINES CORPORATION - COAL LESSEE

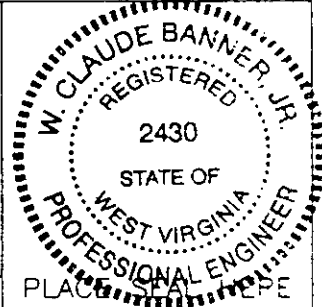


Note: No water users are known within 1000' of location
 (+) Denotes location of well on USGS map

FILE No. ECE-980205/SF
 DRAWING NAME \WVC-3845\GW-PLAT.DWG
 SCALE 1" = 1000'
 MINIMUM DEGREE OF ACCURACY 1 : 2500
 PROVEN SOURCE OF ELEVATION USGS B.M.
W-191-1958

I THE UNDERSIGNED, HEREBY CERTIFY THAT THIS PLAT IS CORRECT TO THE BEST OF MY KNOWLEDGE AND BELIEF AND SHOWS ALL THE INFORMATION REQUIRED BY LAW AND THE REGULATIONS ISSUED AND PRESCRIBED BY THE DEPARTMENT OF MINES.

(SIGNED) *W. Claude Banner, Jr.*
 R.P.E. _____ R.P.S. _____



STATE OF WEST VIRGINIA
 DIVISION OF ENVIRONMENTAL PROTECTION
 OFFICE OF OIL AND GAS
 NITRO, WV

DATE February 5, 19 98
 OPERATOR'S WELL No. WVC-3845
 API WELL No. 47 - 047 01339-C

WELL TYPE: OIL GAS CBM LIQUID INJECTION WASTE DISPOSAL
 (IF "GAS") PRODUCTION STORAGE DEEP SHALLOW

LOCATION: ELEVATION 2217.78 WATER SHED HITE FORK OF BRADSHAW CREEK
 DISTRICT SANDY RIVER COUNTY McDOWELL
 QUADRANGLE BRADSHAW, WV - VA

SURFACE OWNER GEORGIA PACIFIC CORPORATION TRACT # 15 ACREAGE 5,129.68
 CBM ROYALTY OWNER POCAHONTAS LAND CORPORATION/GEORGIA PACIFIC CORPORATION LEASE ACREAGE 5879.29
 LEASE No. 497889

PROPOSED WORK: DRILL CONVERT DRILL DEEPER REDRILL FRACTURE OR
 STIMULATE PLUG OFF OLD FORMATION PERFORATE NEW
 FORMATION OTHER PHYSICAL CHANGE IN WELL (SPECIFY) 6-6 383

PLUG AND ABANDON CLEAN OUT AND REPLUG

TARGET FORMATION PENNSYLVANIAN COALS ESTIMATED DEPTH 2120' MAY 14 1998

WELL OPERATOR EQUITABLE RESOURCES ENERGY COMPANY DESIGNATED AGENT DAVID DEAN
 ADDRESS 1989 EAST STONE DRIVE ADDRESS P.O. DRAWER 40
KINGSPORT, TN 37660 BUCKHANNON, WV 26201

McDow 1339-C

WR-35

24-Apr-98
API # 47- 47-01339 C

State of West Virginia
Division of Environmental Protection
Section of Oil and Gas

Well Operator's Report of Well Work

Farm name: GEORGIA-PACIFIC-CORP. Operator Well No.: 3845

LOCATION: Elevation: 2,217.00 Quadrangle: BRADSHAW

District: SANDY RIVER County: MCDOWELL
Latitude: 6380 Feet South of 37 Deg. 20Min. 0 Sec.
Longitude 3766 Feet West of 81 Deg. 47 Min. 30 Sec.

Company: EQUITABLE RESOURCES EXP.
1989 E. STONE DR., P.O. BOX 1983
KINGSPORT, TN 37662-1983

Agent: DAVID A. DEAN

Inspector: OFIE HELMICK
Permit Issued: 04/27/98
Well work Commenced: 8/18/98
Well work Completed: 9/29/98
Verbal Plugging
Permission granted on: N/A
Rotary X Cable _____ Rig
Total Depth (feet) LTD-2104 DTD-2113
Fresh water depths (ft) 150

Salt water depths (ft) 1450/1479

Is coal being mined in area (Y/N)? N
Coal Depths (ft): 148/408/673/803/908/978
1301/1371/1416/1573/1617/1655/1675/1749

Casing & Tubing Size	Used in Drilling	Left in Well	Cement Fill Up Cu. Ft.
11 3/4	35	35	GROUTED
8 5/8	309	309	94
4 1/2	2078	2078	584
2 3/8	1925	1925	N/A

OPEN FLOW DATA

POCO 6 RIDER, POCO 6, POCO 5 RIDER 1573
 Producing formation POCO 5, POCO 4 Pay zone depth (ft) - 1677
 Gas: Initial open flow N/A MCF/d Oil: Initial open flow _____ Bbl/d
 Final open flow N/A MCF/d Final open flow _____ Bbl/d
 Time of open flow between initial and final tests N/A Hours
 Static rock Pressure 260 psig (surface pressure) after 48 Hours
 COMMINGLED POCO 8 1301.5
 Second producing formation FIRECREEK, POCO 9, Pay zone depth (ft) - 1417
 Gas: Initial open flow _____ MCF/d Oil: Initial open flow _____ Bbl/d
 Final open flow _____ MCF/d Final open flow _____ Bbl/d
 Time of open flow between initial and final tests _____ Hours
 Static rock Pressure _____ psig (surface pressure) after _____ Hours

NOTE: ON BACK OF THIS FORM PUT THE FOLLOWING: 1). DETAILS OF PERFORATED INTERVALS, FRACTURING OR STIMULATING, PHYSICAL CHANGE, ETC. 2). THE WELL LOG WHICH IS A SYSTEMATIC DETAILED GEOLOGICAL RECORD OF ALL FORMATIONS, INCLUDING COAL ENCOUNTERED BY THE WELLBORE.

RECEIVED
Office of Oil & Gas
Permitting

For: Michael P Jaskoski
EQUITABLE RESOURCES EXP. INC.

FEB 05 1999

WV Division of
Environmental Protection

By: MICHAEL P JASKOSKI
Date: 1/25/99

FEB 19 1999

MCDOWELL 1339 C

API #: 47-047-01339 C
OPERATOR WELL #: WVC3845
FARM NAME: GEORGIA PACIFIC CORP

1) DETAILS OF PERFORATED INTERVALS, FRACTURING OR STIMULATING, PHYSICAL CHANGE, ETC.

1ST STAGE - PERFORATED POCO SEAMS # 6 RIDER, 6, 5 RIDER, 5, & 4 FROM 1573 - 1749.5 WITH 14 PERFORATIONS. FRACTURED ON 9/14/98 BY DOWELL WITH 70Q LE FOAM; 29541# 10/20 SAND, 875490 SCF N2, 463 TOTAL BBLs FLUID. BREAKDOWN PRESSURE 2581 PSI, MAX PRESSURE 3918 PSI, AVERAGE PRESSURE 3644 PSI, ISIP 1282 PSI, 1 MIN SIP 1240 PSI, 5 MIN SIP 1194 PSI. AVERAGE INJECTION RATE 25 BPM..

2ND STAGE - PERFORATED FIRECREEK, POCO SEAMS # 9 & 8 FROM 1301.5 - 1417 WITH 12 PERFORATIONS. FRACTURED ON 9/14/98 BY DOWELL WITH 70Q LE FOAM; 30111# 10/20 SAND, 961599 SCF N2. BREAKDOWN PRESSURE 2403, MAX PRESSURE 4040 PSI, AVERAGE PRESSURE 3621 PSI, ISIP 1416, 1-MIN SIP 1272, 5-MIN SIP 1121. AVERAGE INJECTION RATE 30 BPM

2) THE WELL LOG WHICH IS A SYSTEMATIC DETAILED GEOLOGICAL RECORD OF ALL FORMATIONS, INCLUDING COAL ENCOUNTERED BY THE WELLBORE.

SAND, SHALE & THIN COALS	0	1301
FIRECREEK	1301	1304
SAND, SHALE & THIN COALS	1304	1371
POCO #9	1371	1373
SAND, SHALE & THIN COALS	1373	1416
POCO #8	1416	1418
SAND, SHALE & THIN COALS	1418	1573
POCO #6 RIDER	1573	1574
SAND, SHALE & THIN COALS	1574	1617
POCO #6	1617	1618
SAND, SHALE & THIN COALS	1618	1655
POCO #5 RIDER	1655	1656
SAND, SHALE & THIN COALS	1656	1675
POCO #5	1675	1677
SAND, SHALE & THIN COALS	1677	1749
POCO #4	1749	1750
SAND, SHALE & THIN COALS	1750	2104
LOGGER'S TOTAL DEPTH		2104
DRILLER'S TOTAL DEPTH		2113

RECEIVED
Office of Oil & Gas
Permitting

FEB 05 1999

WV Division of
Environmental Protection