

STATE PLANE COORDINATES
 (NAD 27 Datum)
 N 133810.7950
 E 1745848.6446
 Latitude 37.36418748
 Longitude 81.87444046

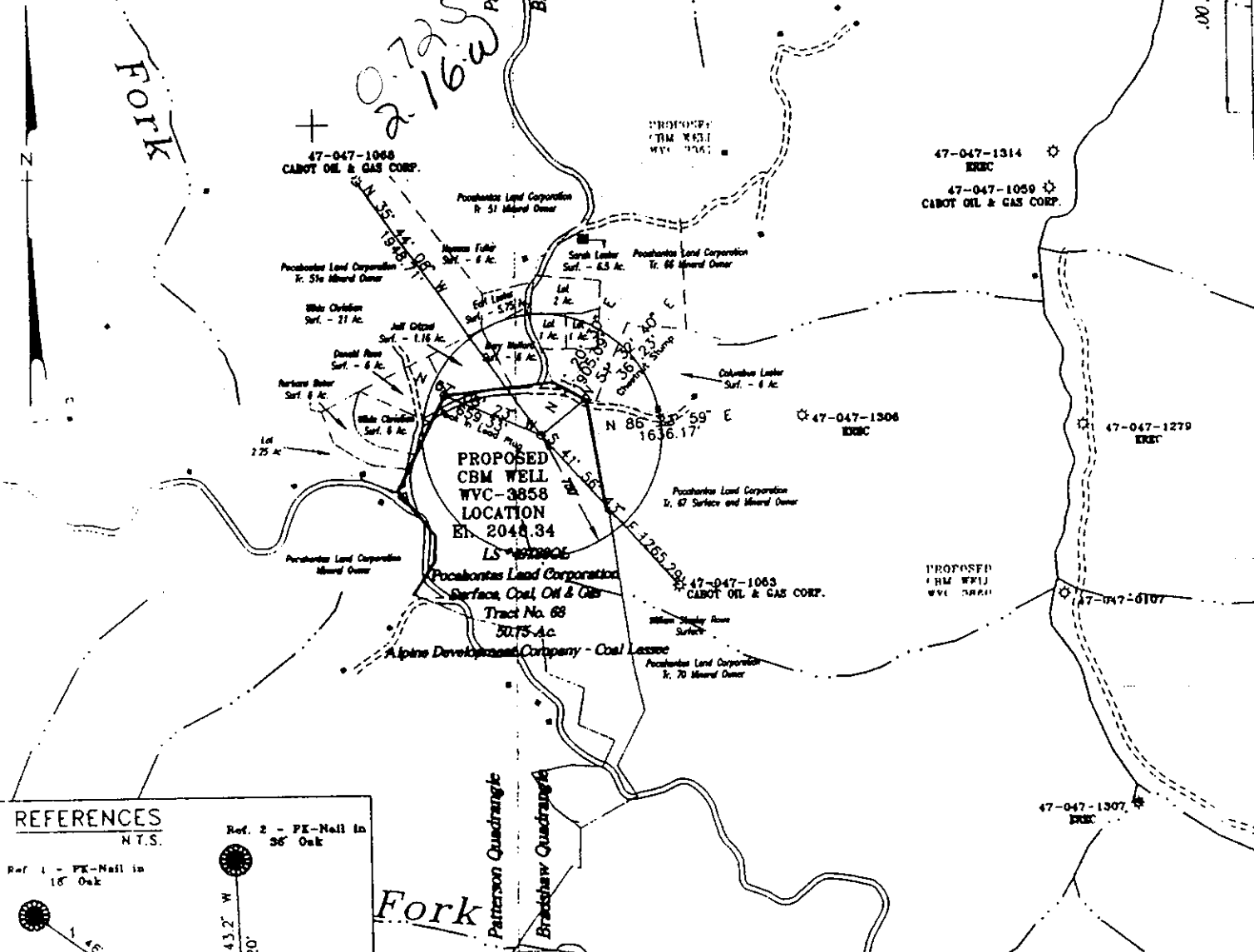
11,951.1713

LATITUDE 37 22 30

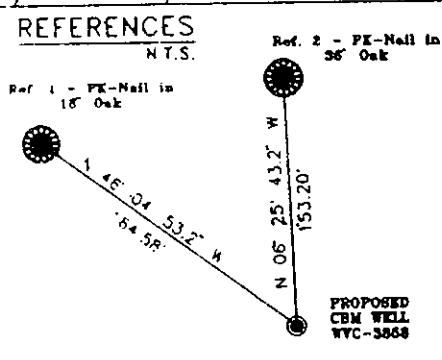
LONGITUDE 81 50 00

Fork

02725
 16.0



PROPOSED
 CBM WELL
 WVC-3858
 LOCATION
 El. 2048.34
 LS 497880L

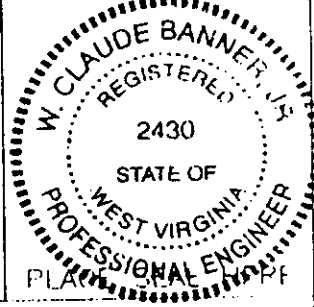


Pocahontas Land Corporation - Surface Tract
 Lease # 497880L Tract # 68 (William Robinson) 50.75 Ac
 Pocahontas Land Corporation - Mineral
 Cabot Oil and Gas Corporation - Oil and Gas Lessee
 Alpine Development Company - Coal Lessee
 Note: (+) Denotes location of well on USGS map.

FILE No. ERE-9803198/SP
 DRAWING NAME WVC-3858\GW-PLAT
 SCALE 1" = 1000'
 MINIMUM DEGREE OF
 ACCURACY 1/2500
 PROVEN SOURCE OF
 ELEVATION USGS B.M.
ESTEP

I THE UNDERSIGNED, HEREBY CERTIFY THAT
 THIS PLAT IS CORRECT TO THE BEST OF MY
 KNOWLEDGE AND BELIEF AND SHOWS ALL THE
 INFORMATION REQUIRED BY LAW AND THE REGU-
 LATIONS ISSUED AND PRESCRIBED BY THE
 DEPARTMENT OF MINES.

(SIGNED) W. Claude Banner
 R.P.E. R.P.S.



STATE OF WEST VIRGINIA
 DIVISION OF ENVIRONMENTAL PROTECTION
 OFFICE OF OIL AND GAS
 NITRO, WV

DATE MARCH 30 19 98
 OPERATOR'S WELL No WVC 3858
 API WELL No. 47 - 047 - 013420
 STATE COUNTY PERMIT

WELL TYPE: OIL GAS CBM LIQUID INJECTION WASTE DISPOSAL
 (IF "GAS") PRODUCTION X STORAGE DEEP SHALLOW
 LOCATION: ELEVATION 2048.34 WATER SHED WHITE OAK BRANCH OF MEATHOUSE FORK
 DISTRICT SANDY RIVER COUNTY McDOWELL
 QUADRANGLE BRADSHAW, WV - VA
 SURFACE OWNER POCAHONTAS LAND CORPORATION ACREAGE 50.75
 MINERAL ROYALTY OWNER POCAHONTAS LAND CORPORATION LEASE ACREAGE 15,379.43
 LEASE No. 497880L
 PROPOSED WORK: DRILL X CONVERT DRILL DEEPER REDRILL FRACTURE OR
 STIMULATE X PLUG OFF OLD FORMATION PERFORATE NEW
 FORMATION OTHER PHYSICAL CHANGE IN WELL (SPECIFY) 6-6 383

PLUG AND ABANDON CLEAN OUT AND REPLUG
 TARGET FORMATION PENNSYLVANIAN COALS ESTIMATED DEPTH 167 04 1998
 WELL OPERATOR EQUITABLE RESOURCES ENERGY COMPANY DESIGNATED AGENT DAVID DEAN
 ADDRESS 1989 EAST STONE DRIVE ADDRESS P.O. DRAWER 40
ELLSWORTH TN 37660 BUCKHANNON, WV 26201

WR-35

29-Apr-98
API # 47- 47-01342 C

State of West Virginia
Division of Environmental Protection
Section of Oil and Gas

Well Operator's Report of Well Work

Farm name: Poca Land, Wm Estep, Operator Well No.: WVC 3860

LOCATION: Elevation: 1,613.00 Quadrangle: BRADSHAW

District: SANDY RIVER County: MCDOWELL
Latitude: 5068 Feet South of 37 Deg. 22Min. 30 Sec.
Longitude 9500 Feet West of 81 Deg. 50 Min. 0 Sec.

Company: EQUITABLE RESOURCES EXP.
1989 E. STONE DR., P.O. BOX 1983
KINGSPORT, TN 37662-1983

Agent: DAVID A. DEAN

Inspector: OFIE HELMICK
Permit Issued: 04/29/98
Well work Commenced: 8/26/98
Well work Completed: 9/21/98
Verbal Plugging
Permission granted on: N/A
Rotary Cable Rig
Total Depth (feet) 1755
Fresh water depths (ft) 120

Salt water depths (ft) 343/1353

Is coal being mined in area (Y/N)? N
Coal Depths (ft): 200/287/376/796
965/1092/1156/1326/1394/1466/1502/1597

Size	Casing & Tubing	Used in Drilling	Left in Well	Cement Fill Up Cu. Ft.
11 3/4		38	38	GROUTED
8 5/8		309	309	94
4 1/2		1740	1740	495
2 3/8		1707	1707	N/A

OPEN FLOW DATA

Producing formation POCO 7, 5, 4, 3, 1 Pay zone depth (ft) 1326 - 1598
 Gas: Initial open flow N/A MCF/d Oil: Initial open flow Bbl/d
 Final open flow 40 MCF/d Final open flow Bbl/d
 Time of open flow between initial and final tests 6 Hours
 Static rock Pressure 320 psig (surface pressure) after 48 Hours
 COMMINGLED POCO 9 965 -
 Second producing formation BECKLEY, FIRECREEK, Pay zone depth (ft) 1157.5
 Gas: Initial open flow MCF/d Oil: Initial open flow Bbl/d
 Final open flow MCF/d Final open flow Bbl/d
 Time of open flow between initial and final tests Hours
 Static rock Pressure psig (surface pressure) after Hours

NOTE: ON BACK OF THIS FORM PUT THE FOLLOWING: 1). DETAILS OF PERFORATED INTERVALS, FRACTURING OR STIMULATING, PHYSICAL CHANGE, ETC. 2). THE WELL LOG WHICH IS A SYSTEMATIC DETAILED GEOLOGICAL RECORD OF ALL FORMATIONS, INCLUDING COAL ENCOUNTERED BY THE WELLBORE.

RECEIVED
Office of Oil & Gas
Permitting

FEB 05 1999

WV Division of
Environmental Protection

For: EQUITABLE RESOURCES EXP. INC.

By: MICHAEL P JASKOSKI
Date: 1/28/99

FEB 19 1999

MCDOWELL 1342 C

API #: 47-047-01342 C
OPERATOR WELL #: WVC3860
FARM NAME: POCA LAND, WM ESTEP

1) DETAILS OF PERFORATED INTERVALS, FRACTURING OR STIMULATING, PHYSICAL CHANGE, ETC.

1ST STAGE - PERFORATED POCO SEAMS # 7, 5, 4, 3 & 1 FROM 1326 - 1598 WITH 14 PERFORATIONS. FRACTURED ON 9/10/98 BY HALLIBURTON WITH 70Q LE FOAM; 22792# 10/20 SAND, 701183 SCF N2, 436 TOTAL BBLs FLUID. BREAKDOWN PRESSURE 1760 PSI, MAX PRESSURE 4021 PSI, AVERAGE PRESSURE 3351 PSI, ISIP 1475 PSI, 1 MIN SIP 1415 PSI, 5 MIN SIP 1358 PSI. AVERAGE INJECTION RATE 27.5 BPM..

2ND STAGE - PERFORATED BECKLEY, FIRECREEK, POCO SEAMS # 9 FROM 965 - 1157.5 WITH 12 PERFORATIONS. FRACTURED ON 9/10/98 BY HALLIBURTON WITH 70Q LE FOAM; 28922# 10/20 SAND, 893829 SCF N2. BREAKDOWN PRESSURE 1912, MAX PRESSURE 3822 PSI, AVERAGE PRESSURE 3322 PSI, ISIP 1300, 1-MIN SIP 1174, 5-MIN SIP 1110. AVERAGE INJECTION RATE 35 BPM

2) THE WELL LOG WHICH IS A SYSTEMATIC DETAILED GEOLOGICAL RECORD OF ALL FORMATIONS, INCLUDING COAL ENCOUNTERED BY THE WELLBORE.

SAND, SHALE & THIN COALS	0	965
BECKLEY	965	968
SAND, SHALE & THIN COALS	968	1092
FIRECREEK	1092	1094
SAND, SHALE & THIN COALS	1094	1156
POCO #9	1156	1158
SAND, SHALE & THIN COALS	1158	1326
POCO #7	1326	1328
SAND, SHALE & THIN COALS	1328	1394
POCO #5	1394	1396
SAND, SHALE & THIN COALS	1396	1466
POCO #4	1466	1467
SAND, SHALE & THIN COALS	1467	1502
POCO #3	1502	1504
SAND, SHALE & THIN COALS	1504	1597
POCO #1	1597	1599
SAND, SHALE & THIN COALS	1599	1755
LOGGER'S TOTAL DEPTH		1755
DRILLER'S TOTAL DEPTH		1755

RECEIVED
Office of Oil & Gas
Permitting

FEB 05 1999

WV Division of
Environmental Protection