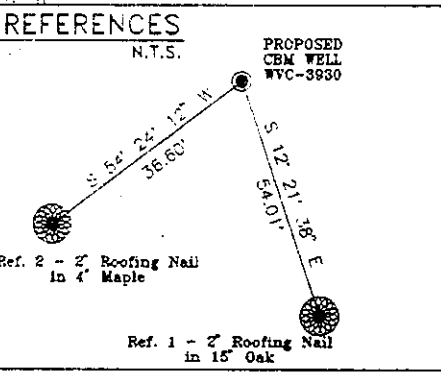
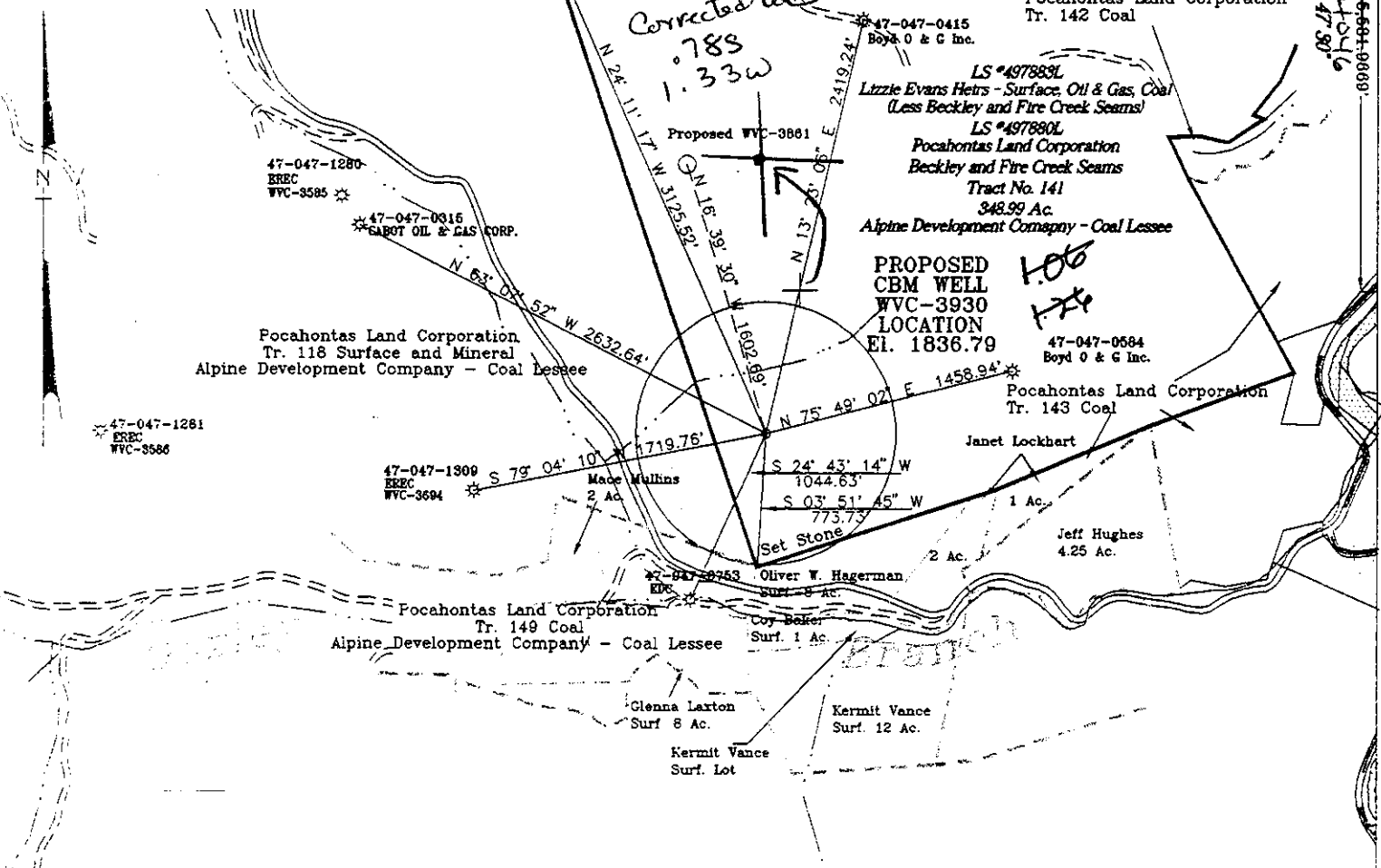


STATE PLANE COORDINATES  
 (NAD 27 Datum)  
 N 131,949.5341  
 E 1,763,330.8142  
 Latitude 37.35951345  
 Longitude 81.81423776

6,508,3863  
 7068  
 LATITUDE 37° 22' 30"  
 LONGITUDE 81° 47' 30"  
 6,584,9669



Lizzie Evans Heirs - Surface, Oil & Gas, Coal (Less Beckley and Fire Creek Seams) Lease # 497883L - 352 Ac.  
 Pocahontas Land Corporation - Beckley & Fire Creek Seams of Coal Lease # 497880L - Tract #141 (Lizzie Evans) 348.99 Ac.  
 Boyd O & G Inc. - Oil and Gas Lessee  
 Alpine Development Company - Coal Lessee  
 Note: (+) Denotes location of well on USGS map

FILE No. ERE-9803198/SP  
 DRAWING NAME WVC-3930\GW-PLAT  
 SCALE 1" = 1000'  
 MINIMUM DEGREE OF ACCURACY 1 : 2500  
 PROVEN SOURCE OF ELEVATION USGS B.M. ESTEP

I THE UNDERSIGNED, HEREBY CERTIFY THAT THIS PLAT IS CORRECT TO THE BEST OF MY KNOWLEDGE AND BELIEF AND SHOWS ALL THE INFORMATION REQUIRED BY LAW AND THE REGULATIONS ISSUED AND PRESCRIBED BY THE DEPARTMENT OF MINES.

(SIGNED) W. Claude Banner  
 R.P.E. \_\_\_\_\_ R.P.S. \_\_\_\_\_



STATE OF WEST VIRGINIA  
 DIVISION OF ENVIRONMENTAL PROTECTION  
 OFFICE OF OIL AND GAS  
 NITRO, WV

DATE MAY 5 19 98  
 OPERATOR'S WELL No. WVC-3930  
 API WELL No. 47 - 047 - 01348C  
 STATE COUNTY PERMIT

WELL TYPE: OIL GAS CBM LIQUID INJECTION WASTE DISPOSAL (IF "GAS") PRODUCTION X STORAGE DEEP SHALLOW

LOCATION: ELEVATION 1836.79 WATER SHED OOZLEY BRANCH OF DRY FORK  
 DISTRICT SANDY RIVER COUNTY McDOWELL  
 QUADRANGLE BRADSHAW, WV - VA

SURFACE OWNER LIZZIE EVANS HEIRS ACREAGE 270.24  
 CBM ROYALTY OWNER POCAHONTAS LAND CORPORATION AND LIZZIE EVANS HEIRS LEASE ACREAGE 348.99  
 LEASE No. 497880L AND 497883L

PROPOSED WORK: DRILL X CONVERT DRILL DEEPER REDRILL FRACTURE OR STIMULATE X PLUG OFF OLD FORMATION PERFORATE NEW FORMATION OTHER PHYSICAL CHANGE IN WELL (SPECIFY) 6-6 383

PLUG AND ABANDON CLEAN OUT AND REPLUG  
 TARGET FORMATION PENNSYLVANIAN COALS ESTIMATED DEPTH \_\_\_\_\_  
 WELL OPERATOR EQUITABLE RESOURCES ENERGY COMPANY DESIGNATED AGENT DAVID DEAN  
 ADDRESS 1989 EAST STONE DRIVE ADDRESS P.O. DRAWER 40  
KINGSPORT, TN 37660 BUCKHANNON, WV 26201

MCDOWELL 1348C

WR-35

22-Jul-98  
API # 47- 47-01349 C

State of West Virginia  
Division of Environmental Protection  
Section of Oil and Gas

1348

same as 1348

Well Operator's Report of Well Work

Farm name: EVANS, LIZZIE - HEIRS Operator Well No.: WVC-3930

LOCATION: Elevation: 1,836.70 Quadrangle: BRADSHAW

District: SANDY RIVER County: MCDOWELL  
Latitude: 4046 Feet South of 37 Deg. 22Min. 30 Sec.  
Longitude 7068 Feet West of 81 Deg. 47 Min. 30 Sec.

Company: EQUITABLE RESOURCES EXP.  
1989 E. STONE DR., P.O. BOX 1983  
KINGSPORT, TN 37662-1983

Agent: DAVID A. DEAN

Inspector: OFIE HELMICK  
Permit Issued: 07/22/98  
Well work Commenced: 9/6/98  
Well work Completed: 9/24/98  
Verbal Plugging  
Permission granted on: N/A  
Rotary  Cable  Rig  
Total Depth (feet) LTD-1652 DTD-1663  
Fresh water depths (ft) 30/265

Salt water depths (ft) 795/829/1539

Is coal being mined in area (Y/N)? N  
Coal Depths (ft): 288/500/650/688/709  
830/975/1273/1419/1467/1511

Size	Used in Drilling	Left in Well	Cement Fill Up Cu. Ft.
11 3/4	33	33	GROUTED
8 5/8	309	309	94
4 1/2	1637	1637	445
2 3/8	1626	1626	N/A

OPEN FLOW DATA

Producing formation POC05, POC03, POC02, POC01 Pay zone depth (ft) - 1512  
Gas: Initial open flow N/A MCF/d Oil: Initial open flow 1273.5 Bbl/d  
Final open flow 56 MCF/d Final open flow Bbl/d  
Time of open flow between initial and final tests 6 Hours  
Static rock Pressure\* 70 psig (surface pressure) after 48 Hours  
\* COMMINGLED

\*\* Second producing formation BECKLEY, FIRECREEK Pay zone depth (ft) 831 - 979  
Gas: Initial open flow N/A MCF/d Oil: Initial open flow Bbl/d  
Final open flow MCF/d Final open flow Bbl/d  
Time of open flow between initial and final tests Hours  
Static rock Pressure psig (surface pressure) after Hours

\*\* WELL WENT ON VACUUM, DID NOT COMPLETE FRAC

NOTE: ON BACK OF THIS FORM PUT THE FOLLOWING: 1). DETAILS OF PERFORATED INTERVALS, FRACTURING OR STIMULATING, PHYSICAL CHANGE, ETC. 2). THE WELL LOG WHICH IS A SYSTEMATIC DETAILED GEOLOGICAL RECORD OF ALL FORMATIONS, INCLUDING COALS ENCOUNTERED BY THE WELLBORE.

RECEIVED  
Office of Oil & Gas  
Permitting

FEB 05 1999

WV Division of  
Environmental Protection

For: EQUITABLE RESOURCES EXP. INC.

By: MICHAEL P JASKOSKI

Date: 1/22/99

FEB 19 1999

MCDOWELL 1348 C

API #: 47-047-01349 C  
OPERATOR WELL #: WVC3930  
FARM NAME: EVANS, LIZZIE HEIRS

1) DETAILS OF PERFORATED INTERVALS, FRACTURING OR STIMULATING, PHYSICAL CHANGE, ETC.

1<sup>ST</sup> STAGE - PERFORATED POCO SEAMS # 5, 3, 2 & 1 FROM 1273.5 - 1512 WITH 14 PERFORATIONS. FRACTURED ON 9/21/98 BY DOWELL WITH 70Q LE FOAM; 19910# 12/20 SAND, 666043 SCF N2, 400 TOTAL BBLS FLUID. BREAKDOWN PRESSURE 2031 PSI, MAX PRESSURE 3700 PSI, AVERAGE PRESSURE 3332 PSI, ISIP 938 PSI, 1 MIN SIP 921 PSI, 5 MIN SIP 884 PSI. AVERAGE INJECTION RATE 47 BPM..

2<sup>ND</sup> STAGE - PERFORATED BECKLEY, FIRECREEK, FROM 831 - 979 WITH 13 PERFORATIONS. FRACTURED ON 9/21/98 BY DOWELL WITH 70Q LE FOAM; WELL WENT ON VACUUM AFTER BALLOUT; DID NOT COMPLETE FRAC

2) THE WELL LOG WHICH IS A SYSTEMATIC DETAILED GEOLOGICAL RECORD OF ALL FORMATIONS, INCLUDING COAL ENCOUNTERED BY THE WELLBORE.

SAND, SHALE & THIN COALS	0	830
BECKLEY	830	835
SAND, SHALE & THIN COALS	835	975
FIRECREEK	975	979
SAND, SHALE & THIN COALS	979	1273
POCO #5	1273	1276
SAND, SHALE & THIN COALS	1276	1419
POCO #3	1419	1421
SAND, SHALE & THIN COALS	1421	1467
POCO #2	1467	1468
SAND, SHALE & THIN COALS	1468	1511
POCO #1	1511	1513
SAND, SHALE & THIN COALS	1513	1652
LOGGER'S TOTAL DEPTH		1652
DRILLER'S TOTAL DEPTH		1663

