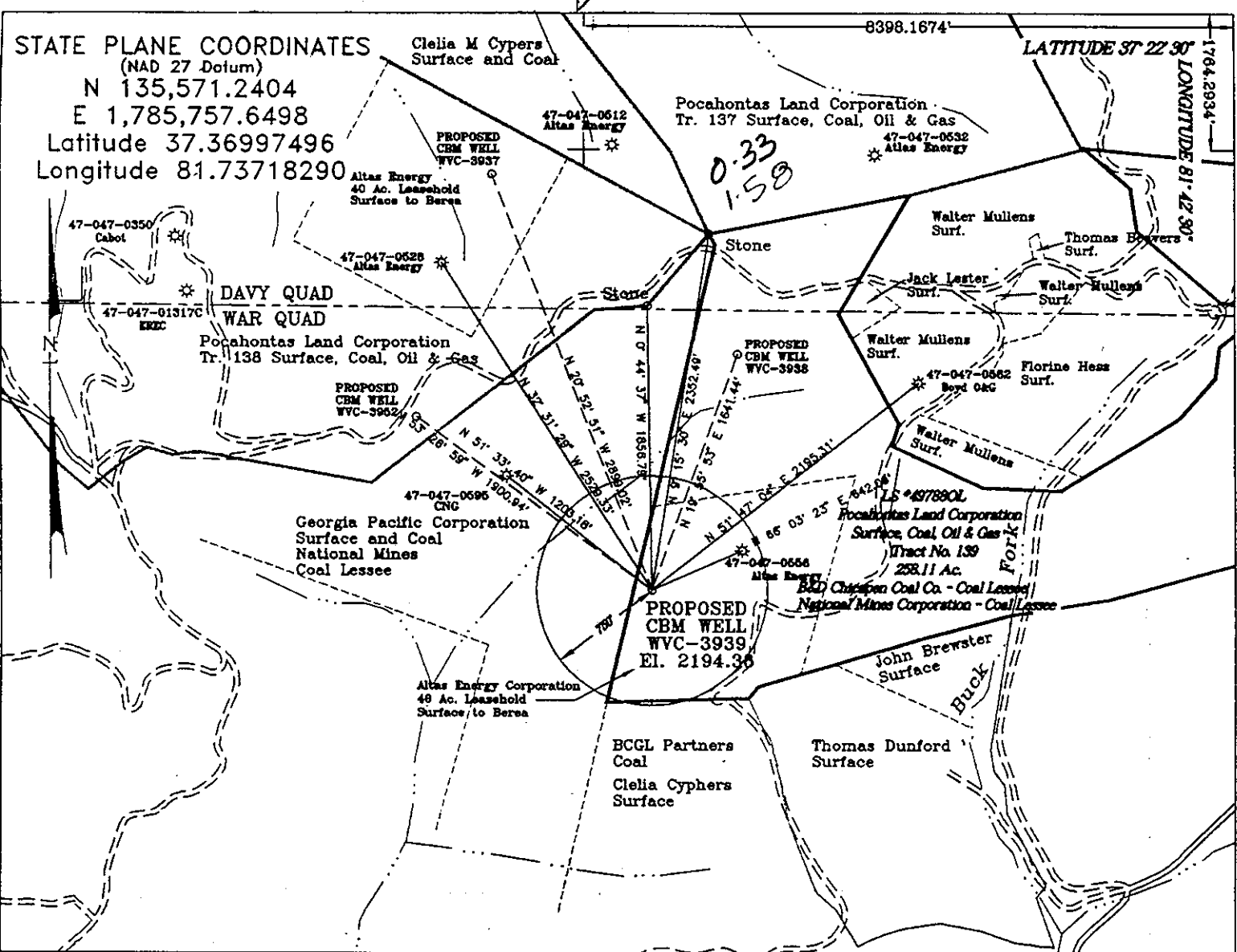


STATE PLANE COORDINATES
(NAD 27 Datum)
N 135,571.2404
E 1,785,757.6498
Latitude 37.36997496
Longitude 81.73718290

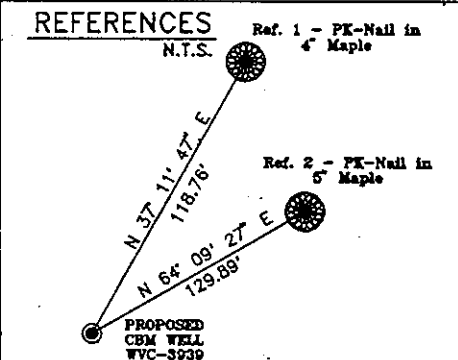
8398.1674'

LATITUDE 37° 22' 30"

LONGITUDE 81° 42' 30"



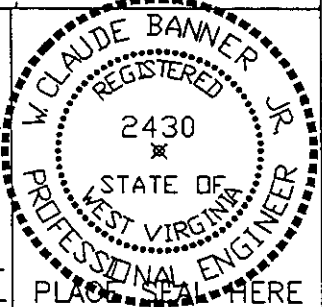
0.33
1.58



Pocahontas Land Corporation - Surface, Coal, Oil and Gas Lease # 497880L Tract # 139 258.11 Ac.
Atlas Energy Corporation - Oil and Gas Lessee Surface to Berea Cabot Oil and Gas Corporation - Oil and Gas Lessee below Berea B&D Chicapen Coal Co. and National Mines Corporation - Coal Lessee
Note: (+) Denotes location of well on USGS map.
No water users are known within 1000' of location.

FILE No. ERE-980707/SP
DRAWING NAME \EQUITABL\PLT-3939
SCALE 1" = 1000'
MINIMUM DEGREE OF ACCURACY 1 : 2500
PROVEN SOURCE OF ELEVATION WVC-3697/USGS B.M. 151 RHP 1959 EL. 2156

I THE UNDERSIGNED, HEREBY CERTIFY THAT THIS PLAT IS CORRECT TO THE BEST OF MY KNOWLEDGE AND BELIEF AND SHOWS ALL THE INFORMATION REQUIRED BY LAW AND THE REGULATIONS ISSUED AND PRESCRIBED BY THE DEPARTMENT OF MINES.
(SIGNED) W. Claude Banner
R.P.E. _____ R.P.S. _____



STATE OF WEST VIRGINIA
DIVISION OF ENVIRONMENTAL PROTECTION
OFFICE OF OIL AND GAS
NITRO, WV

DATE JULY 7 19 98
OPERATOR'S WELL No. WVC-3939
API WELL No. 47 - 047 - 01361C

WELL TYPE: OIL GAS CBM LIQUID INJECTION WASTE DISPOSAL STATE COUNTY PERMIT
(IF "GAS") PRODUCTION X STORAGE DEEP SHALLOW

LOCATION: ELEVATION 2194.38 WATER SHED JOHNNYCAKE HOLLOW OF DRY FORK
DISTRICT BIG CREEK COUNTY McDOWELL
QUADRANGLE WAR, WV

SURFACE OWNER Pocahontas Land Corporation ACREAGE 258.11
CBM ROYALTY OWNER Pocahontas Land Corporation LEASE ACREAGE 15379.43
LEASE No. 497880L

PROPOSED WORK: DRILL X CONVERT DRILL DEEPER REDRILL FRACTURE OR STIMULATE X PLUG OFF OLD FORMATION PERFORATE NEW FORMATION OTHER PHYSICAL CHANGE IN WELL (SPECIFY) 6-6-285

PLUG AND ABANDON CLEAN OUT AND REPLUG
TARGET FORMATION PENNSYLVANIAN COALS ESTIMATED DEPTH 1970' AUG 31 1998
WELL OPERATOR EQUITABLE RESOURCES ENERGY COMPANY DESIGNATED AGENT DAVID DEAN
ADDRESS 1989 EAST STONE DRIVE ADDRESS P.O. DRAWER 40
KINGSPORT, TN 37660 BUCKHANNON, WV 26201

M.C. Don 1361C

WR-35

24-Aug-98
API # 47- 047-01361 C

State of West Virginia
Division of Environmental Protection
Section of Oil and Gas

Received _____

Well Operator's Report of Well Work

Farm Name: POCA LAND & MULLINS, W E Jr Operator Well No.: WVC 3939

LOCATION: Elevation: 2,194.38 Quadrangle: War
District: Big Creek County: McDowell

Latitude: 1764 Feet South of Deg. 37 Minutes 22 Seconds 30
Longitude: 8398 Feet West of Deg. 81 Minutes 42 Seconds 30

Company: Equitable Production Company
P.O. Box 2347, 1710 Pennsylvania Avenue
Charleston, WV 25328

Agent: Richard Smeltzer

Inspector: Ofie Helmick
Permit Issued: 08/24/1998
Well work commenced: 11/17/99
Well work completed: 12/10/99

Verbal Plugging
Permission granted on: _____

Rotary Rig Cable Rig _____
Total Depth 1830 feet
Fresh water depths (ft) _____

Salt water depths (ft) 1740

Is coal being mined in area?
Coal Depths (ft): Depth ranged from 409-1760'

Casing & Tubing Size	Used in Drilling	Left in Well	Cement Fill Up Cu. Ft.
12-3/4"	23'	23'	grtd
8-5/8"	317'	317'	130 FT ³
4-1/2"	1800'	1800'	311 FT ³
2-3/8"		1789'	

Stamp: JUL 08 2000
Office of Oil & Gas
Permitting
Attach

OPEN FLOW DATA

Producing formation Poco Seams/Beckley/Firecreek/Poco #8 Pay Zone Depth (ft): _____ for details _____

Gas: Initial open flow _____ Bbl/d
Final open flow 23 Final open flow: _____
Time of open flow between initial and final tests _____ Hours

Static rock pressure 130 psig (surface pressure) after _____ 48 Hours

Second producing formation _____ Pay Zone Depth (ft): _____

Gas: Initial open flow _____ MCF/d Oil: Initial open flow _____ Bbl/d
Final open flow: _____ MCF/d Final open flow: _____
Time of open flow between initial and final tests _____ Hours

Static rock pressure _____ psig (surface pressure) after _____ Hours

NOTE: ON BACK OF THIS FORM PUT THE FOLLOWING: 1) DETAILS OF PERFORATED INTERVALS, FRACTURING OR STIMULATING, PHYSICAL CHANGE, ETC. 2) THE WELL LOG WHICH IS A SYSTEMATIC DETAILED GEOLOGICAL RECORD OF ALL FORMATIONS, INCLUDING COAL ENCOUNTERED BY THE WELLBORE.

For: BLAZER ENERGY CORPORATION

By: Barbara Hubbard
Date: 7-5-00

McDow 1361C

AUG 04 2000

**EQUITABLE PRODUCTION COMPANY
WR-35 COMPLETION REPORT - Attachment
Well Treatment Summary**

Well: WVC-3939

API# 47-047-01361

Date	11/22/99	11/22/99				
Type Frac						
Acid, N ₂ , Foam, Water	X-Link Gel	X-Link Gel				
Zone Treated	Poca Seams	Beckley Firecreek Poco 8				
# Perfs	13	14				
From - To:	1521-1783	1088-1388				
BD Pressure @ psi	2680	2821				
ATP psi	3400	3680				
Avg. Rate, B=B/M, S= SCF/M	22 B	20 B				
Max. Treat Press psi	3800	3961				
ISIP psi	1600	1528				
Frac Gradient	1.66	1.67				
10 min S-I Pressure	1343 (5 min)	1077 (5 min)				
Material Volume						
Sand-sks	100	110				
Water-bbl	365	448				
SCF N ₂	499,000	744,000				
Acid-gal	500 gal 7-1/2%	500 gal 7-1/2%				
NOTES:						

RECEIVED
 JUL 03 2000
 WVD Division of
 Environmental Protection

TOP	BASE	FORMATION	REMARKS*
0	15	Overburden	
15	50	Sandstone	
50	90	Sandy Shale	
90	110	Sand Stone	
110	150	Sandy Shale	
150	280	Sand Stone	
280	340	Sandy Shale	GT @ 340'=NS
345	409	Sandy Shale	
409	410	Coal	
410	471	Sandy Shale	
471	472	Coal	
472	630	Sand Stone	
630	739	Sandy Shale	
739		Sewell A	
874		Welch	
962		L. Raleigh	
1087		Beckley	
1276		Firecreek	
1292		L. Firecreek	
1377		Poca 8	
1452		Poca 6	
1520		Poca 4	
1606		Poca 3	
1666		Poca 2	
1720		Poca 1	1" stream water @ 1740'
1780		Squire Jim	
1790		TD	GT @ TD=odor