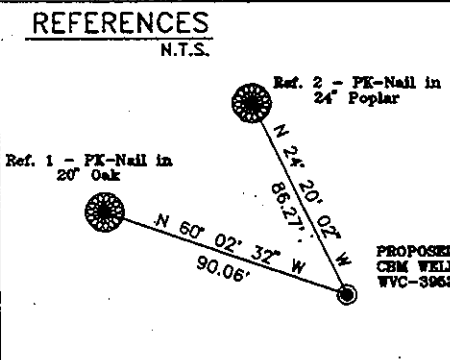
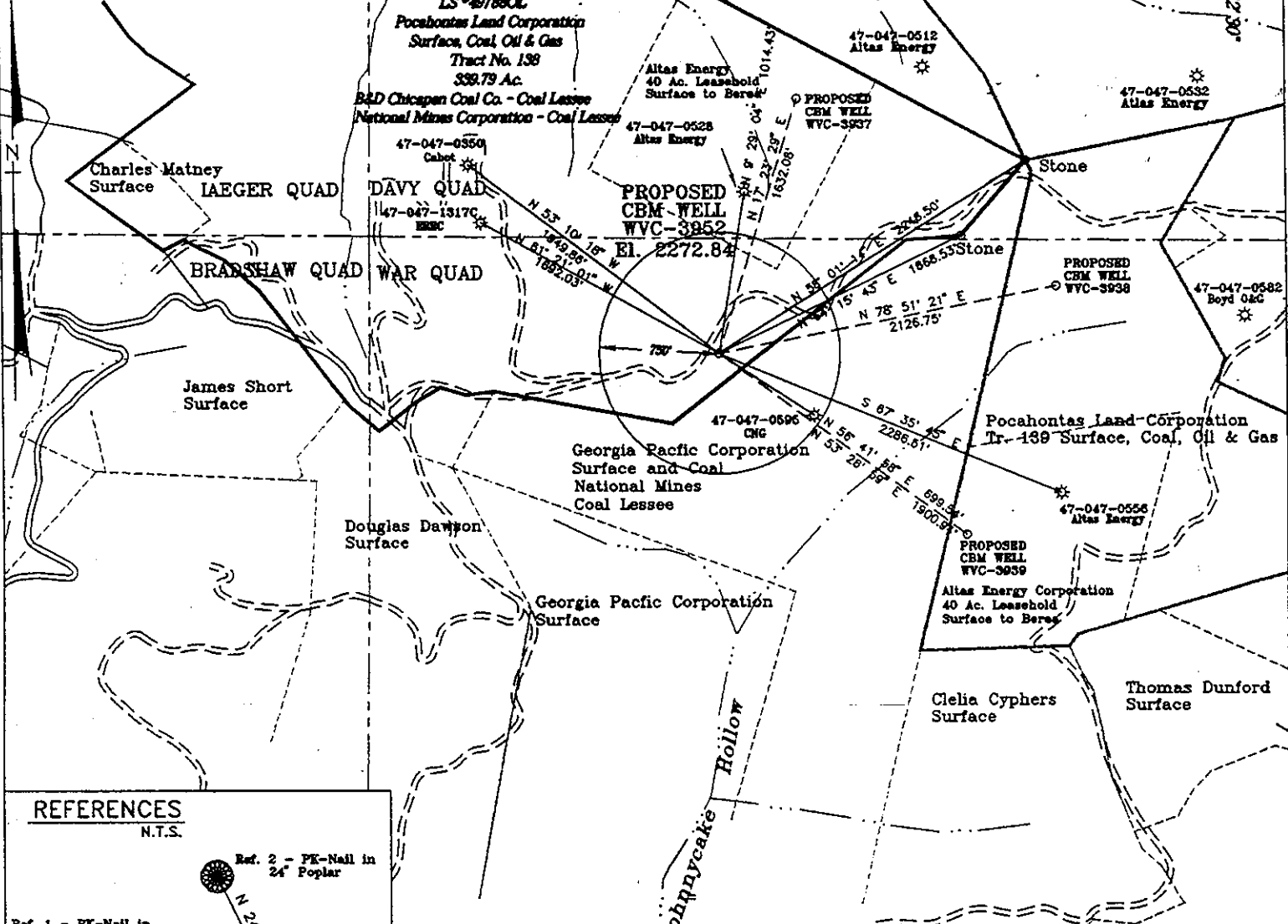


STATE PLANE COORDINATES  
 (NAD 27 Datum)  
 N 136,703.3012  
 E 1,784,230.5627  
 Latitude 37.37305039  
 Longitude 81.74246841

9925.2544'  
 LATITUDE 37° 22' 30"  
 LONGITUDE 81° 42' 30"  
 632.2325'

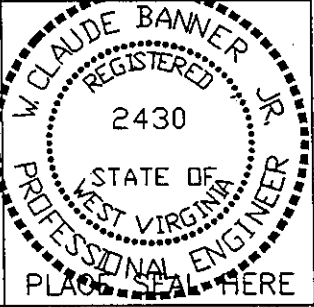


Pocahontas Land Corporation - Surface Tract Lease # 497880L Tract # 138 339.79 Ac.  
 Pocahontas Land Corporation - Mineral  
 Cabot Oil and Gas Corporation - Oil and Gas Lessee  
 B&D Chicopen Coal Co. and National Mines Corporation - Coal Lessee  
 Note: (+) Denotes location of well on USGS map.  
 No water users are known within 1000' of location.

FILE No. ERE-980707/SP  
 DRAWING NAME \EQUITABL\PLT-3952  
 SCALE 1" = 1000'  
 MINIMUM DEGREE OF ACCURACY 1 : 2500  
 PROVEN SOURCE OF ELEVATION WVC-3697/USGS B.M. 151 RHP 1959 EL. 2156

I THE UNDERSIGNED, HEREBY CERTIFY THAT THIS PLAT IS CORRECT TO THE BEST OF MY KNOWLEDGE AND BELIEF AND SHOWS ALL THE INFORMATION REQUIRED BY LAW AND THE REGULATIONS ISSUED AND PRESCRIBED BY THE DEPARTMENT OF MINES.

(SIGNED) W. Claude Banner  
 R.P.E. \_\_\_\_\_ R.P.S. \_\_\_\_\_



STATE OF WEST VIRGINIA  
 DIVISION OF ENVIRONMENTAL PROTECTION  
 OFFICE OF OIL AND GAS  
 NITRO, WV

DATE JULY 7 19 98  
 OPERATOR'S WELL No. WVC-3952  
 API WELL No. 47 - 047 - 01362C

WELL TYPE: OIL GAS CBM LIQUID INJECTION WASTE DISPOSAL STATE COUNTY PERMIT  
 (IF "GAS") PRODUCTION X STORAGE DEEP SHALLOW

LOCATION: ELEVATION 2272.84 WATER SHED JOHNNY CAKE OF DRY FORK  
 DISTRICT BIG CREEK COUNTY McDOWELL  
 QUADRANGLE WAR, WV

SURFACE OWNER POCAHONTAS LAND CORPORATION ACREAGE 339.79  
 CBM ROYALTY OWNER POCAHONTAS LAND CORPORATION LEASE ACREAGE 15379.43  
 LEASE No. 497880L

PROPOSED WORK: DRILL X CONVERT DRILL DEEPER REDRILL FRACTURE OR  
 STIMULATE X PLUG OFF OLD FORMATION PERFORATE NEW  
 FORMATION OTHER PHYSICAL CHANGE IN WELL (SPECIFY) 6-6-285

PLUG AND ABANDON CLEAN OUT AND REPLUG  
 TARGET FORMATION PENNSYLVANIAN COALS ESTIMATED DEPTH 2050'  
 WELL OPERATOR EQUITABLE RESOURCES ENERGY COMPANY DESIGNATED AGENT DAVID DEAN  
 ADDRESS 1989 EAST STONE DRIVE ADDRESS P.O. DRAWER 40  
KINGSPORT, TN 37660 BUCKHANNON, WV 26201

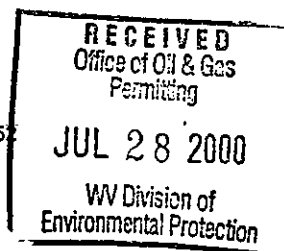
Mc Dow 1362C

WR-35

24-Aug-98  
API # 47- 047-01362 C

State of West Virginia  
Division of Environmental Protection  
Section of Oil and Gas

Well Operator's Report of Well Work



Farm Name: POCAHONTAS LAND CORP Operator Well No.: WVC 3952  
LOCATION: Elevation: 2,272.84 Quadrangle: WAR  
District: BIG CREEK County: McDOWELL

Latitude: 632 Feet South of Deg. 37 Minutes 22 Seconds 30  
Longitude: 9925 Feet West of Deg. 81 Minutes 42 Seconds 30

Company: EQUITABLE PRODUCTION COMPANY  
P.O. Box 2347, 1710 Pennsylvania Avenue  
Charleston, WV 25328

Agent: Richard D. Smeltzer

Inspector: OFIE HELMICK

Permit Issued: 08/24/1998

Well work commenced: 10/28/99

Well work completed: 04/04/00

Verbal Plugging

Permission granted on:

Rotary Rig X Cable Rig \_\_\_\_\_

Total Depth 1980' feet \_\_\_\_\_

Fresh water depths (ft) \_\_\_\_\_

Salt water depths (ft) 1830' \_\_\_\_\_

Is coal being mined in area?

Coal Depths (ft): Ranged from 122-1847'

Casing & Tubing Size	Used in Drilling	Left in Well	Cement Fill Up Cu. Ft.
12-3/4"	22'	22'	GRTD
8-5/8"	314'	314'	118 FT <sup>3</sup>
4-1/2"	1970'	1970'	317 FT <sup>3</sup>
2-3/8"		1940.65'	

OPEN FLOW DATA

Producing formation Bckley, Firecreek, Poca 9.8.6.4.2, Squire Jim

Pay Zone Depth (ft): \_\_\_\_\_  
See Attach for details

Gas: Initial open flow 15 Bbl/d

NA Final open flow: \_\_\_\_\_

Time of open flow between initial and final tests \_\_\_\_\_ Hours

Static rock pressure \_\_\_\_\_ psig (surface pressure) after \_\_\_\_\_ Hours

Second producing formation \_\_\_\_\_

Pay Zone Depth (ft): \_\_\_\_\_

Gas: Initial open flow \_\_\_\_\_ MCF/d Oil: Initial open flow \_\_\_\_\_ Bbl/d

Final open flow: \_\_\_\_\_ MCF/d Final open flow: \_\_\_\_\_

Time of open flow between initial and final tests \_\_\_\_\_ Hours

Static rock pressure \_\_\_\_\_ psig (surface pressure) after \_\_\_\_\_ Hours

NOTE: ON BACK OF THIS FORM PUT THE FOLLOWING: 1) DETAILS OF PERFORATED INTERVALS, FRACTURING OR STIMULATING, PHYSICAL CHANGE, ETC. 2) THE WELL LOG WHICH IS A SYSTEMATIC DETAILED GEOLOGICAL RECORD OF ALL FORMATIONS, INCLUDING COAL ENCOUNTERED BY THE WELLBORE.

For: BLAZER ENERGY CORPORATION

By: Barna Hubbard  
Date: 7-28-2000

McDow 1362 C

AUG 11 2000

**EQUITABLE PRODUCTION COMPANY  
WR-35 COMPLETION REPORT - Attachment  
Well Treatment Summary**

**RECEIVED**  
Office of Oil & Gas  
Permitting  
**JUL 28 2000**  
WV Division of  
Environmental Protection  
APR 27 2004 10:16:21 C

Well: WVC-3952

Date	11/15/99	11/15/99	3/18/00			
Type Frac						
Acid, N <sub>2</sub> , Foam, Water	Gel Water	Gel Water	X-Link Gel			
Zone Treated	Stage 1	Stage 2	Stage 1&2 Combined			
# Perfs	12	14	50			
From - To:	1558-1868	1152-1472	1152-1868			
BD Pressure @ psi	1811	2888	Hydrostatic			
ATP psi	3042	3700	3100			
Avg. Rate, B=B/M, S= SCF/M	10 B	14 B	25 B			
Max. Treat Press psi	4000	4150	4000			
ISIP psi	2340	1160	1963			
Frac Gradient	1.80	1.29	1.73			
10 min S-I Pressure			1935 (5 MIN)			
Material Volume						
Sand-sks	14	7	42			
Water-bbl	251	271	476			
SCF N <sub>2</sub>						
Acid-gal	500	590	500			
NOTES:	SCREENED OUT	SCREENED OUT				

TOP	BASE	FORMATION	REMARKS*
0	20	Overburden	
20	45	Sandstone	
45	100	Sandy Shale	
100	170	Sandstone	Open Mine 122-126'
170	230	Sandy Shale	
230	270	Sandstone	
270	370	Sandy Shale	GT @ 316', 600', 913', 1194', 1505'=NS
370	400	Sandstone	
400	420	Sandy Shale	
420	480	Sandstone	
480	482	Coal	
482	484	Shale	
484	485	Coal	
485	490	Shale	
490	491	Coal	
491	629	Sandy Shale	
629	630	Coal	
630	793	Sandy Shale	
793	796	Coal	
796	805	Shale	
805	845	Sandstone	
874		Sewell A	
970		Welch	
1060		L. Raleigh	
1152		Beckley	
1315		Firecreek	
1343		L. Firecreek	
1399		Poca 9	
1470		Poca 8	

047 1362

1558  
1625  
1768  
1803  
1867  
1980

Poca 6  
Poca 4  
Poca 2  
Poca 1  
Squire Jim  
TD

GT @ TD=15 mcf

RECEIVED  
Office of Oil & Gas  
Permitting  
JUL 28 2000  
WV Division of  
Environmental Protection

M=Dow 1362 C

AUG 11 2000