

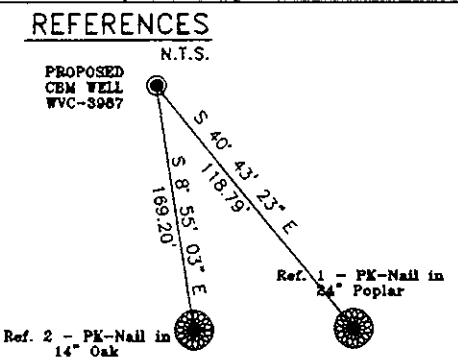
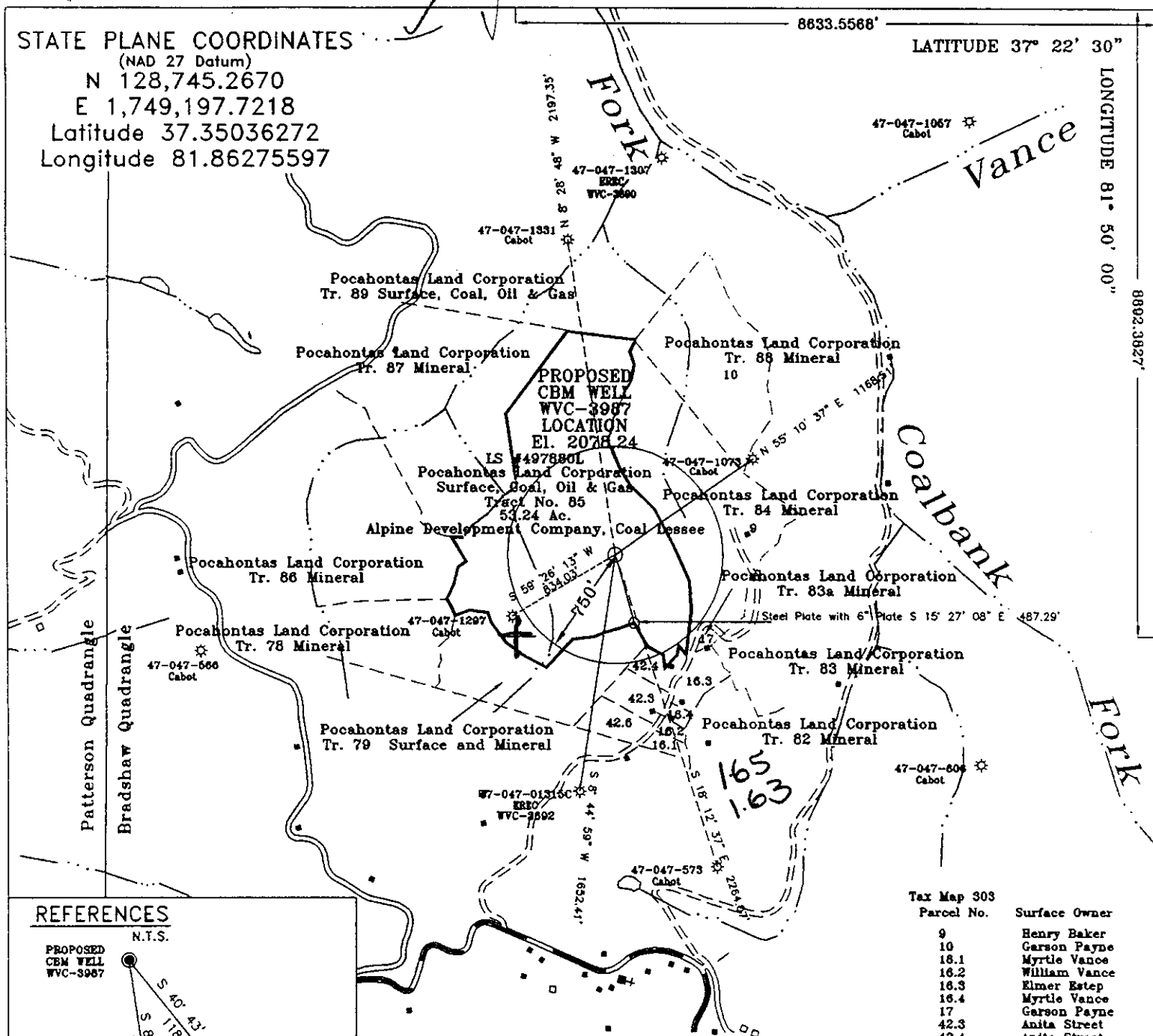
STATE PLANE COORDINATES

8833.5568'

LATITUDE 37° 22' 30"

LONGITUDE 81° 50' 00"

(NAD 27 Datum)  
 N 128,745.2670  
 E 1,749,197.7218  
 Latitude 37.35036272  
 Longitude 81.86275597



Pocahontas Land Corporation - Surface, Coal, Oil & Gas Lease # 497880L Tract # 85 53.24 Ac.  
 Cabot Oil and Gas Corporation - Oil and Gas Lessee  
 Alpine Development Company - Coal Lessee

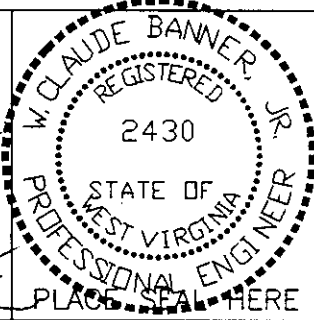
Tax Map 303

Parcel No.	Surface Owner
9	Henry Baker
10	Carson Payne
16.1	Myrtle Vance
16.2	William Vance
16.3	Elmer Estep
16.4	Myrtle Vance
17	Carson Payne
42.3	Anita Street
42.4	Anita Street
42.6	Anita Street

FILE No. ERE-980810/SP  
 DRAWING NAME WVC-3987\GW-PLAT  
 SCALE 1" = 1000'  
 MINIMUM DEGREE OF ACCURACY 1 : 2500  
 PROVEN SOURCE OF ELEVATION USGS B.M.  
ESTEP

I THE UNDERSIGNED, HEREBY CERTIFY THAT THIS PLAT IS CORRECT TO THE BEST OF MY KNOWLEDGE AND BELIEF AND SHOWS ALL THE INFORMATION REQUIRED BY LAW AND THE REGULATIONS ISSUED AND PRESCRIBED BY THE DEPARTMENT OF MINES.

(SIGNED) *W. Claude Banner, Jr.*  
 R.P.E. \_\_\_\_\_ R.P.S. \_\_\_\_\_



STATE OF WEST VIRGINIA  
 DIVISION OF ENVIRONMENTAL PROTECTION  
 OFFICE OF OIL AND GAS  
 NITRO, WV

DATE AUGUST 18 19 98  
 OPERATOR'S WELL No. WVC-3987  
 API WELL No. 47 - 047 - 1368C

WELL TYPE: OIL X GAS X CBM X LIQUID INJECTION    WASTE DISPOSAL     
 (IF "GAS") PRODUCTION X STORAGE    DEEP    SHALLOW   

LOCATION: ELEVATION 2078.24 WATER SHED BEECH FLATS HOLLOW OF MEATHOUSE FORK  
 DISTRICT SANDY RIVER COUNTY McDOWELL  
 QUADRANGLE BRADSHAW, WV - VA

SURFACE OWNER Pocahontas Land Corporation ACREAGE 53.24  
 CBM ROYALTY OWNER Pocahontas Land Corporation LEASE ACREAGE 15379.43  
 LEASE No. 497880L

PROPOSED WORK: DRILL X CONVERT    DRILL DEEPER    REDRILL    FRACTURE OR  
 STIMULATE X PLUG OFF OLD FORMATION    PERFORATE NEW  
 FORMATION    OTHER PHYSICAL CHANGE IN WELL (SPECIFY) 6-6 383

PLUG AND ABANDON    CLEAN OUT AND REPLUG   

TARGET FORMATION PENNSYLVANIAN COALS ESTIMATED DEPTH SEP 28 1998  
 WELL OPERATOR EQUITABLE RESOURCES ENERGY COMPANY DESIGNATED AGENT DAVID DEAN  
 ADDRESS 1989 EAST STONE DRIVE ADDRESS P.O. DRAWER 40  
KINGSPORT, TN 37660 BUCKHANNON, WV 26201

McDOWELL 1368C

State of West Virginia  
Division of Environmental Protection  
Section of Oil and Gas

Reviewed \_\_\_\_\_

Well Operator's Report of Well Work

Farm Name: Pocahontas Land Corp. Operator Well No.: WVC 3987

LOCATION: Elevation: 2,078.00 Quadrangle: Bradshaw  
District: Sandy River County: McDowell

Latitude: 8892 Feet South of Deg. 37 Minutes 22 Seconds 30  
Longitude: 8633 Feet West of Deg. 81 Minutes 50 Seconds 0

Company: Equitable Production Company  
P.O. Box 2347, 1710 Pennsylvania Avenue  
Charleston, WV 25328

Agent: David A Dean

Inspector: Ofie Helmick  
Permit Issued: 09/25/1998  
Well work commenced: 05/26/99  
Well work completed: 07/02/99

Verbal Plugging Permission granted on: \_\_\_\_\_

Rotary Rig  Cable Rig \_\_\_\_\_  
Total Depth 2120 feet  
Fresh water depths (ft) 1610

Salt water depths (ft) \_\_\_\_\_

Is coal being mined in area?  
Coal Depths (ft): Depths ranged from 201 - 1510'

Casing & Tubing Size	Used in Drilling	Left in Well	Cement Fill Up Cu. Ft.
12-3/4"	27'	27'	grtd
8-5/8"	645'	645'	194 FT <sup>3</sup>
4-1/2"	2081'	2081'	318 FT <sup>3</sup>

OPEN FLOW DATA

Producing formation Upper POCO Coals Pay Zone Depth (ft): \_\_\_\_\_ See Attach for details

Gas: Initial open flow \_\_\_\_\_ Bbl/d  
 Final open flow 18 Final open flow: \_\_\_\_\_  
 Time of open flow between initial and final tests \_\_\_\_\_ Hours  
 Static rock pressure \_\_\_\_\_ psig (surface pressure) after \_\_\_\_\_ Hours

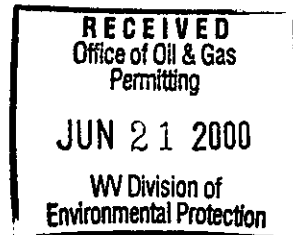
Second producing formation Pay Zone Depth (ft): \_\_\_\_\_

Gas: Initial open flow \_\_\_\_\_ MCF/d Oil: Initial open flow \_\_\_\_\_ Bbl/d  
 Final open flow: \_\_\_\_\_ MCF/d Final open flow: \_\_\_\_\_  
 Time of open flow between initial and final tests \_\_\_\_\_ Hours  
 Static rock pressure \_\_\_\_\_ psig (surface pressure) after \_\_\_\_\_ Hours

NOTE: ON BACK OF THIS FORM PUT THE FOLLOWING: 1) DETAILS OF PERFORATED INTERVALS, FRACTURING OR STIMULATING, PHYSICAL CHANGE, ETC. 2) THE WELL LOG WHICH IS A SYSTEMATIC DETAILED GEOLOGICAL RECORD OF ALL FORMATIONS, INCLUDING COAL ENCOUNTERED BY THE WELLBORE.

For: BLAZER ENERGY CORPORATION

By: Barbara A. Hubbard  
Date: 6-20-2000



JUN 30 2000

**EASTERN STATES OIL & GAS, INC.**  
**WR-35 COMPLETION REPORT - Attachment**  
**Well Treatment Summary**

Well: WVC-3987

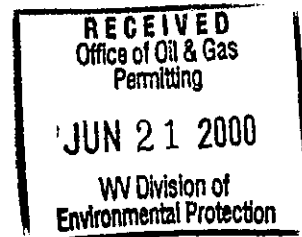
API# 47-047-01368 C

Date	6/11/99	6/11/99				
Type Frac						
Acid, N <sub>2</sub> , Foam, Water	70 Q Foam	70 Q Foam				
Zone Treated	Poca Coals	Berkley/Fire Creek Coals				
# Perfs	13	12				
From - To:	1684-1955	1331-1505				
BD Pressure @ psi	1527	1500				
ATP psi		3738				
Avg. Rate, B=B/M, S= SCF/M		25 B				
Max. Treat Press psi		4128				
ISIP psi		1936				
Frac Gradient						
10 min S-I Pressure		1653 (5 min)				
Material Volume						
Sand-sks		118				
Water-bbl		507				
SCF N <sub>2</sub>		670,000				
Acid-gal		550 gal 7-1/2%				
NOTES:	This stage abandon due to high psi.					

TOP	BASE	FORMATION	REMARKS*
0	10	Overburden	
10	15	Brown Sand	
15	68	Sandy Shale	
68	130	Sandstone	
130	201	Sandy Shale	
201	202	Coal	
202	295	Sandy Shale	
295	296	Coal	
296	340	Sandstone	GT @ 300'=NS
340	406	Sandy Shale	
406	407	Coal	
407	500	Sandstone	
500	502	Coal	
502	560	Sandy Shale	
560	617	Sandstone	GT @ 600'=NS
617	618	Coal	
618	630	Sandy Shale	
630	675	Sandstone	
675	706	Sandstone	
706	707	Coal	
707	753	Sandstone	

JUN 30 2000

753	942	Sandy Shale	GT @ 900'=NS
942	943	Coal	
943	955	Sandy Shale	
955	1016	Sandstone	
1016	1069	Sewell A Welch	
1180		L. Raleigh	GT @ 1210'=NS
1330		Bekley	
1446		Fire Creek	
1503		L. Fire Creek	GT @ 1500'=NS, 1/4" stream water @ 1610'
1683		Poca 6	
		Poca 5	
1757		Poca 4	
1832		Poca 3	GT @ 1810'=NS
1873		Poca 2	
1905		Poca 1	
1954		Squire Jim	GT @ 2120'=odor



JUN 30 2000