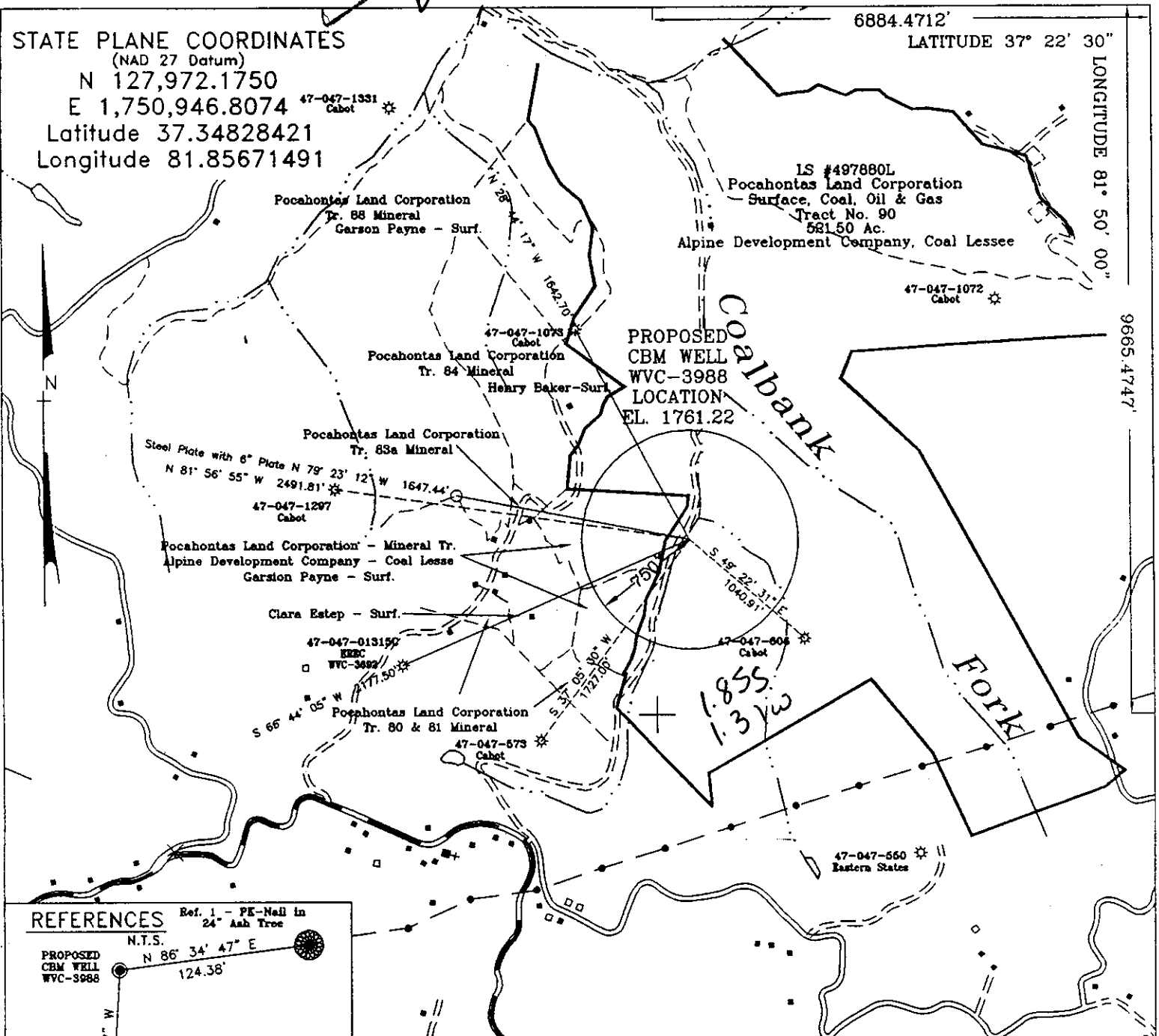


STATE PLANE COORDINATES

(NAD 27 Datum)
 N 127,972.1750
 E 1,750,946.8074
 Latitude 37.34828421
 Longitude 81.85671491

6884.4712' LATITUDE 37° 22' 30"

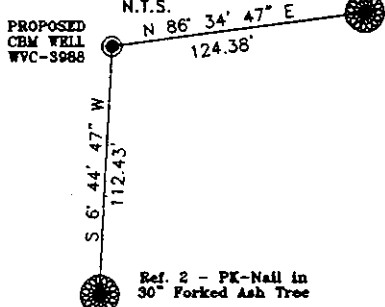
LONGITUDE 81° 50' 00"



PROPOSED
 CBM WELL
 WVC-3988
 LOCATION
 EL. 1761.22

REFERENCES

Ref. 1 - PK-Nail in 24" Ash Tree



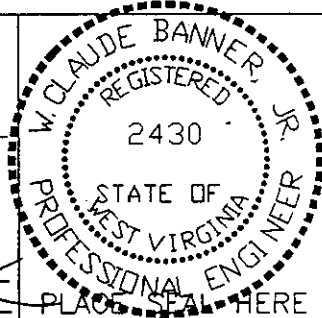
Pocahontas Land Corporation - Surface, Coal, Oil & Gas
 Lease # 497880L Tract # 90 521.50 Ac.
 Cabot Oil and Gas Corporation - Oil and Gas Lessee
 Alpine Development Company - Coal Lessee

(+) Denotes location of well on USGS map.

FILE No. ERE-980810/SP
 DRAWING NAME WVC-3988/GW-PLAT
 SCALE 1" = 1000'
 MINIMUM DEGREE OF ACCURACY 1 : 2500
 PROVEN SOURCE OF ELEVATION USGS B.M. ESTEP

I THE UNDERSIGNED, HEREBY CERTIFY THAT THIS PLAT IS CORRECT TO THE BEST OF MY KNOWLEDGE AND BELIEF AND SHOWS ALL THE INFORMATION REQUIRED BY LAW AND THE REGULATIONS ISSUED AND PRESCRIBED BY THE DEPARTMENT OF MINES.

(SIGNED) W. Claude Banner, Jr.
 R.P.E. _____ R.P.S. _____



STATE OF WEST VIRGINIA
 DIVISION OF ENVIRONMENTAL PROTECTION
 OFFICE OF OIL AND GAS
 NITRO, WV

DATE AUGUST 18 19 98
 OPERATOR'S WELL No. WVC-3988
 API WELL No. 47 - 047 - 01369C
 STATE COUNTY PERMIT

WELL TYPE: OIL GAS CBM LIQUID INJECTION WASTE DISPOSAL
 (IF "GAS") PRODUCTION X STORAGE DEEP SHALLOW
 LOCATION: ELEVATION 1761.22 WATER SHED OLD HOUSE BRANCH OF COALBANK FORK
 DISTRICT SANDY RIVER COUNTY McDOWELL
 QUADRANGLE BRADSHAW, WV - VA

SURFACE OWNER Pocahontas Land Corporation ACREAGE 521.50
 CBM ROYALTY OWNER Pocahontas Land Corporation LEASE ACREAGE 15379.43
 LEASE No. 497880L

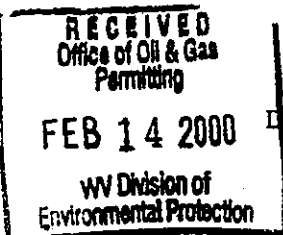
PROPOSED WORK: DRILL X CONVERT DRILL DEEPER REDRILL FRACTURE OR
 STIMULATE X PLUG OFF OLD FORMATION PERFORATE NEW
 FORMATION OTHER PHYSICAL CHANGE IN WELL (SPECIFY) 6-6 383

PLUG AND ABANDON CLEAN OUT AND REPLUG
 TARGET FORMATION PENNSYLVANIAN COALS ESTIMATED DEPTH _____
 WELL OPERATOR EQUITABLE RESOURCES ENERGY COMPANY DESIGNATED AGENT DAVID DEAN
 ADDRESS 1989 EAST STONE DRIVE ADDRESS P.O. DRAWER 40
KINGSPORT, TN 37660 BUCKHANNON, WV 26201

SEP 28 1998

McDOW 13169C

WP-35



25-Sep-98
API # 47- 47-01369 C

State of West Virginia
Division of Environmental Protection
Section of Oil and Gas

Rowson K

Well Operator's Report of Well Work

Farm name: POCAHONTAS LAND CORP. Operator Well No.: WVC 3988

LOCATION: Elevation: 1,761.00 Quadrangle: BRADSHAW

District: SANDY RIVER County: MCDOWELL
Latitude: 9665 Feet South of 37 Deg. 22Min. 30 Sec.
Longitude 6884 Feet West of 81 Deg. 50 Min. 0 Sec.

Company: EQUITABLE RESOURCES EXP.
1989 E. STONE DR., P.O. BOX 1983
KINGSPORT, TN 37662-1983

Agent: DAVID A. DEAN

Inspector: OFIE HELMICK
Permit Issued: 09/25/98
Well work Commenced: 6/1/99
Well work Completed: 6/17/99
Verbal Plugging
Permission granted on: N/A
Rotary x Cable _____ Rig
Total Depth (feet) LTD = 1784 DTD = 1796
Fresh water depths (ft) 70 / 1250

Casing & Tubing Size	Used in Drilling	Left in Well	Cement Fill Up Cu. Ft.
12 3/4	19'	19'	
8 5/8	303'	303'	100
4 1/2	1733'	1733'	305
2 3/8	1707'	1707'	

Salt water depths (ft) _____

Is coal being mined in area (Y/N)? N
Coal Depths (ft): 83-85, 303-305, 758-760, 906-909,
1026-1029, 1030-1032, 1079-1081, 1350-1352, 1415-1419,
1459-1462, 1499-1501, 1540-1542

OPEN FLOW DATA

COAL SEAMS=POCO 5, 4, 3, 2, 1, BECKLEY, FIRECREEK POCO 9
Producing formation COAL SEAMS Pay zone depth (ft) 1344.5-1542
Gas: Initial open flow N/A MCF/d Oil: Initial open flow N/A Bbl/d
Final open flow 23 MCF/d Final open flow N/A Bbl/d
Time of open flow between initial and final tests 6 Hours
Static rock Pressure 150 psig (surface pressure) after 48 Hours

Second producing formation _____ Pay zone depth (ft) _____
Gas: Initial open flow _____ MCF/d Oil: Initial open flow _____ Bbl/d
Final open flow _____ MCF/d Final open flow _____ Bbl/d
Time of open flow between initial and final tests _____ Hours
Static rock Pressure _____ psig (surface pressure) after _____ Hours

NOTE: ON BACK OF THIS FORM PUT THE FOLLOWING: 1). DETAILS OF PERFORATED INTERVALS, FRACTURING OR STIMULATING, PHYSICAL CHANGE, ETC. 2). THE WELL LOG WHICH IS A SYSTEMATIC DETAILED GEOLOGICAL RECORD OF ALL FORMATIONS, INCLUDING COAL ENCOUNTERED BY THE WELLBORE.

For: EQUITABLE RESOURCES EXP. INC.

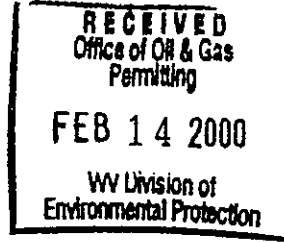
By: T. P. Puckett
Date: 2-4-2000

MAR 2 2000

MCDOW 1369C

11/20/2000

11/20/2000



API #: 47-047-01369 C
 OPERATOR WELL #: WVC3988
 FARM NAME: POCAHONTAS LAND CORPORATION

1) DETAILS OF PERFORATED INTERVALS, FRACTURING OR STIMULATING, PHYSICAL CHANGE, ETC.

1ST STAGE - PERFORATED POCO SEAMS # 5,4,3,2,1 FROM 1344.5 - 1542 WITH 13 PERFORATIONS. FRACTURED ON 6/17/99 BY DOWELL SCHLUMBERGER WITH 70Q LE FOAM; 14528# 12/20 SAND, 488700 SCF N2, 401 TOTAL BBLs FLUID. BREAKDOWN PRESSURE 1653 PSI, MAX PRESSURE 3758 PSI, AVERAGE PRESSURE 3320 PSI, ISIP 1870 PSI, 1 MIN SIP 1579 PSI, 5 MIN SIP 1433 PSI. AVERAGE INJECTION RATE 30 BPM..

2ND STAGE - PERFORATED BECKLEY, FIRECREEK, POCO 9 FROM 906.5 - 1081 WITH 13 PERFORATIONS. FRACTURED ON 6/17/98 BY DOWELL SCHLUMBERGER WITH 70Q LE FOAM; 15184# 12/20 SAND, 570000 SCF N2. BREAKDOWN PRESSURE 1891, MAX PRESSURE 3750 PSI, AVERAGE PRESSURE 3300 PSI, ISIP 1200 PSI, 1-MIN SIP 1030 PSI, 5-MIN SIP 993 PSI. AVERAGE INJECTION RATE 32.5 BPM

2) THE WELL LOG, WHICH IS A SYSTEMATIC DETAILED GEOLOGICAL RECORD OF ALL FORMATIONS, INCLUDING COAL ENCOUNTERED BY THE WELLBORE.

SAND, SHALE & THIN COALS	0	906
BECKLEY	906	910
SAND, SHALE & THIN COALS	910	1026
FIRECREEK	1026	1030
SAND, SHALE & THIN COALS	1030	1079
POCO #9	1079	1081
SAND, SHALE & THIN COALS	1081	1344
POCO #5	1344	1346
SAND, SHALE & THIN COALS	1346	1417
POCO #4	1417	1419
SAND, SHALE & THIN COALS	1419	1460
POCO #3	1460	1462
SAND, SHALE & THIN COALS	1462	1500
POCO #2	1500	1502
SAND, SHALE & THIN COALS	1502	1540
POCO #1	1540	1542
SAND, SHALE & THIN COALS	1542	1784
LOGGER'S TOTAL DEPTH		1784
DRILLER'S TOTAL DEPTH		1796