

STATE PLANE COORDINATES

(NAD 27 Datum)

N 130,069.2725

E 1,761,388.2016

Latitude 37.35430279

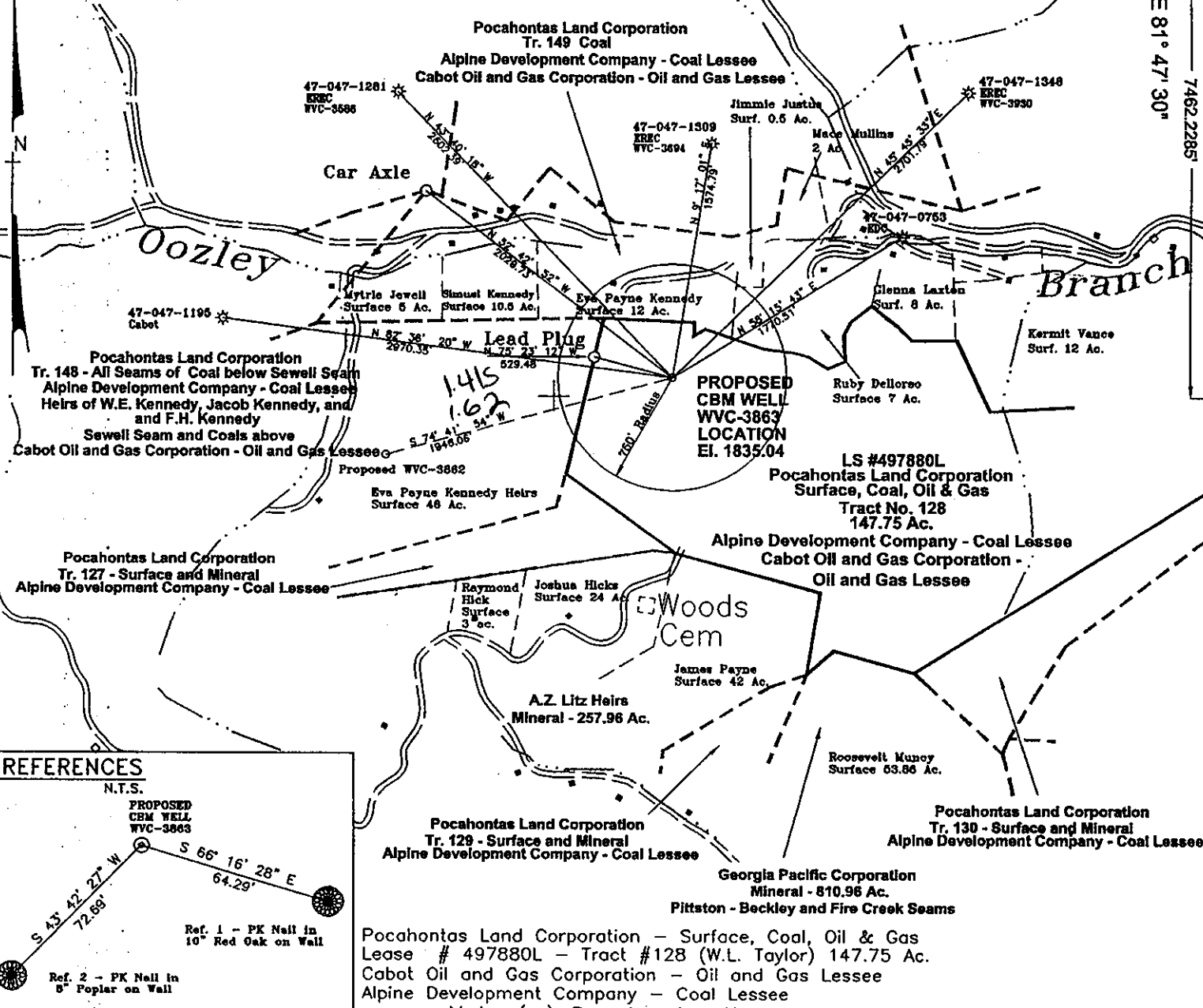
Longitude 81.82086350

8551.21087'

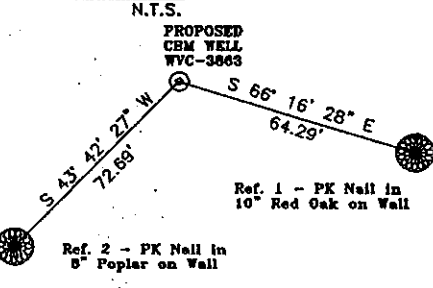
LATITUDE 37° 22' 30"

LONGITUDE 81° 47' 30"

7462.2285'



REFERENCES



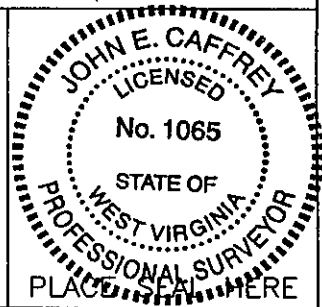
Pocahontas Land Corporation - Surface, Coal, Oil & Gas Lease # 497880L - Tract #128 (W.L. Taylor) 147.75 Ac.
 Cabot Oil and Gas Corporation - Oil and Gas Lessee
 Alpine Development Company - Coal Lessee

Note: (+) Denotes location of well on USGS map.

FILE No. Equitable99
 DRAWING NAME \PLAT\WVC-3863
 SCALE 1" = 1000'
 Drawing Number 2-2-99-2SP
 MINIMUM DEGREE OF ACCURACY 1 : 2500
 PROVEN SOURCE OF ELEVATION USGS B.M.
Estep

I THE UNDERSIGNED, HEREBY CERTIFY THAT THIS PLAT IS CORRECT TO THE BEST OF MY KNOWLEDGE AND BELIEF AND SHOWS ALL THE INFORMATION REQUIRED BY LAW AND THE REGULATIONS ISSUED AND PRESCRIBED BY THE DEPARTMENT OF MINES.

(SIGNED) [Signature]
 R.P.E. R.P.S. 1065



STATE OF WEST VIRGINIA
 DIVISION OF ENVIRONMENTAL PROTECTION
 OFFICE OF OIL AND GAS
 NITRO, WV

DATE FEBRUARY 16 19 99
 OPERATOR'S WELL No. WVC-3863
 API WELL No. 47 - 047 01388C
 STATE COUNTY PERMIT

WELL TYPE: OIL GAS CBM LIQUID INJECTION WASTE DISPOSAL
 (IF "GAS") PRODUCTION X STORAGE DEEP SHALLOW

LOCATION: ELEVATION 1835.04 WATER SHED OZLEY BRANCH OF DRY FORK
 DISTRICT SANDY RIVER COUNTY McDOWELL
 QUADRANGLE BRADSHAW, WV - VA

SURFACE OWNER POCAHONTAS LAND CORPORATION ACREAGE 147.75
 CBM ROYALTY OWNER POCAHONTAS LAND CORPORATION LEASE ACREAGE 15,379.43
 LEASE No. 497880L

PROPOSED WORK: DRILL X CONVERT DRILL DEEPER REDRILL FRACTURE OR
 STIMULATE X PLUG OFF OLD FORMATION PERFORATE NEW
 FORMATION OTHER PHYSICAL CHANGE IN WELL (SPECIFY)

PLUG AND ABANDON CLEAN OUT AND REPLUG
 TARGET FORMATION PENNSYLVANIAN COALS ESTIMATED DEPTH
 WELL OPERATOR EQUITABLE PRODUCTION COMPANY DESIGNATED AGENT LARRY AYLESTOCK
 ADDRESS 1989 EAST STONE DRIVE ADDRESS P.O. BOX 1550
KINGSPORT, TN 37660 CLARKSBURG, WV 26302

MAY 24 1999

Mc Dow 1388C

3992

6-6 383

State of West Virginia
Division of Environmental Protection
Section of Oil and Gas

Review: _____

Well Operator's Report of Well Work

Farm Name: Pocahontas Land Corporation

Operator Well No.: WVC-3863

LOCATION: Elevation: 1,835.04

Quadrangle: Bradshaw

District: Brenton

County: McDowell

Latitude: 7462 Feet South of
Longitude: 8551 Feet West of

Deg. 37 Minutes 22 Seconds 30
Deg. 81 Minutes 47 Seconds 30

Company: **EQUITABLE PRODUCTION COMPANY**
P.O. Box 2347, 1710 Pennsylvania Avenue
Charleston, WV 25328

Agent: Richard D. Smeltzer

Inspector: Ofie Helmick

Permit Issued: 05/17/1999

Well work commenced: 06/14/99

Well work completed: 07/08/99

Verbal Plugging

Permission granted on: _____

Rotary Rig X Cable Rig _____

Total Depth 1680 feet

Fresh water depths (ft) 80'

Salt water depths (ft) _____

Is coal being mined in area?

Coal Depths (ft): Ranged from 55'-1540'

Casing & Tubing Size	Used in Drilling	Left in Well	Cement Fill Up Cu. Ft.
12-3/4"	26'	26'	Grtd
8-5/8"	311'	311'	100 FT ³
4-1/2"	1655'	1655'	316 FT ³
2-3/8"		1631'	

RECEIVED
Office of Oil & Gas
Permitting
AUG 30 2000
WV Division of
Environmental Protection

OPEN FLOW DATA

Producing formation Poca 5/3/2/1, Beckley/Firecreek

Pay Zone Depth (ft): _____

See Attach for details

Gas: Initial open flow odor

Bbl/d

Final open flow _____

Final open flow: _____

Time of open flow between initial and final tests _____

Hours

Static rock pressure _____ psig (surface pressure) after _____ Hours

Second producing formation _____

Pay Zone Depth (ft): _____

Gas: Initial open flow _____ MCF/d

Oil: Initial open flow _____ Bbl/d

Final open flow: _____ MCF/d

Final open flow: _____

Time of open flow between initial and final tests _____

Hours

Static rock pressure _____ psig (surface pressure) after _____ Hours

NOTE: ON BACK OF THIS FORM PUT THE FOLLOWING: 1) DETAILS OF PERFORATED INTERVALS, FRACTURING OR STIMULATING, PHYSICAL CHANGE, ETC. 2) THE WELL LOG WHICH IS A SYSTEMATIC DETAILED GEOLOGICAL RECORD OF ALL FORMATIONS, INCLUDING COAL ENCOUNTERED BY THE WELLBORE.

For: EQUITABLE PRODUCTION COMPANY

By: Barbara Hubbard
Date: 8-29-00

Mc Dow 1388 C

SEP 08 2000

**EQUITABLE PRODUCTION COMPANY
WR-35 COMPLETION REPORT - Attachment
Well Treatment Summary**

Well: WVC-3863

API# ⁴⁷47-045-01388 C

Date	6/22/99	6/22/99				
Type Frac						
Acid, N ₂ , Foam, Water	70 Q Foam	70 Q Foam				
Zone Treated	Poca 5,3,2,1	Beckley Firecreek				
# Perfs	12	11				
From - To:	1289-1526.5	821.5-979.5				
BD Pressure @ psi	1245	1420				
ATP psi	3644	2550				
Avg. Rate, B=B/M, S= SCF/M	20 B	35 B				
Max. Treat Press psi	4435	2900				
ISIP psi	NA	1035				
Frac Gradient	NA	1.58				
10 min S-I Pressure	NA	723				
Material Volume						
Sand-sks	51	150				
Water-bbl	204	422				
SCF N ₂	207,000	473,000				
Acid-gal	500 gal 7-1/2%	800 gal 7-1/2%				
NOTES:	Screened out					

RECEIVED
Office of Oil & Gas
Permitting
AUG 30 2000
Wy Division of
Environmental Protection

TOP	BASE	FORMATION	REMARKS*
0	14	Overburn	
14	55	Sandstone	
55	56	Coal	
56	115	Sandshale	Hole damp @ 80'
115	180	Sandstone	
180	182	Coal	
182	280	Sandyshale	
280	285	Sandstone	
285	287	Coal	
287	300	Sandyshale	
300	420	Sandstone	
420	495	Sandyshale	
495	497	Coal	
497	570	Sandyshale	
570	571	Coal	
571	625	Sandstone	
625	626	Coal	
626	638	Sandstone	
638		Welch	
823		Beckley	
976		Firecreek	
1230		Poco 6	
1288		Poco 4	
1318		Poco 3	
1427		Poco 2	
1470		Poco 1	
1520		Squire Jim	

GT @ TD=trace