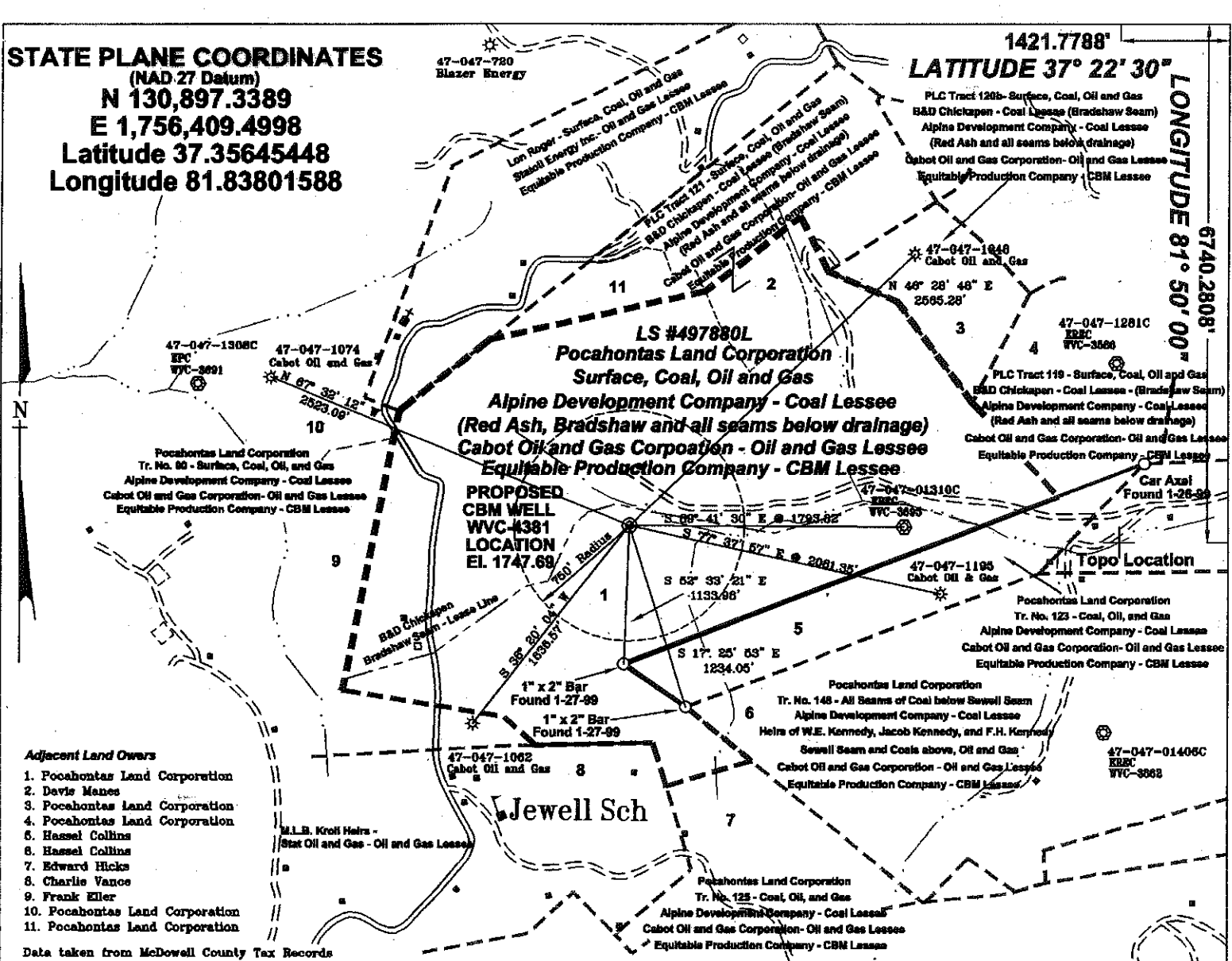


STATE PLANE COORDINATES
(NAD 27 Datum)
N 130,897.3389
E 1,756,409.4998
Latitude 37.35645448
Longitude 81.83801588

1421.7788'
LATITUDE 37° 22' 30"
LONGITUDE 81° 50' 00"



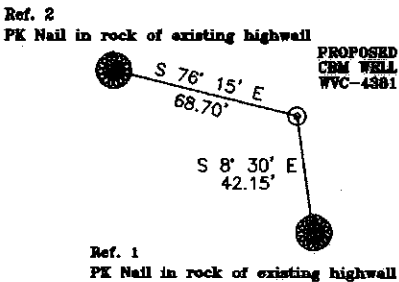
Adjacent Land Owners

1. Pocahontas Land Corporation
2. Davis Manes
3. Pocahontas Land Corporation
4. Pocahontas Land Corporation
5. Hassel Collins
6. Hassel Collins
7. Edward Hicks
8. Charlie Vance
9. Frank Eller
10. Pocahontas Land Corporation
11. Pocahontas Land Corporation

Data taken from McDowell County Tax Records

REFERENCES

N.T.S.



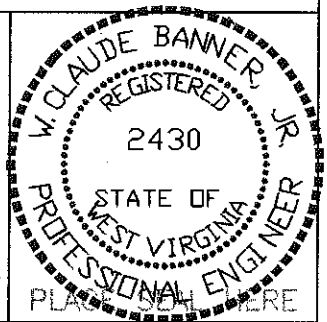
Pocahontas Land Corporation - Surface, Coal, Oil and Gas
New Lansburgh Interior Tract #122 - Lease # 497880L
Alpine Development Company - Coal Lessee
(Red Ash, Bradshaw and all seams below drainage)
Cabot Oil and Gas Corporation - Oil and Gas Lessee
Equitable Production Company - CBM Lessee

Note: (+) Denotes location of well on USGS map.

FILE No. Equitable-99
DRAWING NAME WVC-4381\WVC-4381
Drawing Number 11-8-99-1SP
SCALE 1" = 1000'
MINIMUM DEGREE OF ACCURACY 1 : 2500
PROVEN SOURCE OF ELEVATION Global Positioning System (GPS)

I THE UNDERSIGNED, HEREBY CERTIFY THAT THIS PLAT IS CORRECT TO THE BEST OF MY KNOWLEDGE AND BELIEF AND SHOWS ALL THE INFORMATION REQUIRED BY LAW AND THE REGULATIONS ISSUED AND PRESCRIBED BY THE DEPARTMENT OF MINES.

(SIGNED) W. Claude Banner
R.P.E. 2430 R.P.S.



STATE OF WEST VIRGINIA
DIVISION OF ENVIRONMENTAL PROTECTION
OFFICE OF OIL AND GAS
NITRO, WV

DATE JANUARY 17 20 00
OPERATOR'S WELL No. WVC-4381
API WELL No. 47 - 047 - 014270

WELL TYPE: OIL GAS CBM LIQUID INJECTION WASTE DISPOSAL STATE COUNTY PERMIT
(IF "GAS") PRODUCTION X STORAGE DEEP SHALLOW
LOCATION: ELEVATION 1747.69 WATER SHED OZLEY BRANCH OF DRY FORK
DISTRICT SANDY RIVER COUNTY McDOWELL
QUADRANGLE BRADSHAW, WV - VA

SURFACE OWNER POCAHONTAS LAND CORPORATION ACREAGE 212.98
CBM ROYALTY OWNER POCAHONTAS LAND CORPORATION LEASE ACREAGE 15,379.43

LEASE No. 497880L
PROPOSED WORK: DRILL X CONVERT DRILL DEEPER REDRILL FRACTURE OR STIMULATE X PLUG OFF OLD FORMATION PERFORATE NEW FORMATION OTHER PHYSICAL CHANGE IN WELL (SPECIFY)
PLUG AND ABANDON CLEAN OUT AND REPLUG
TARGET FORMATION PENNSYLVANIAN COALS ESTIMATED DEPTH
WELL OPERATOR EQUITABLE PRODUCTION COMPANY DESIGNATED AGENT LARRY AYLESTOCK
ADDRESS 1989 EAST STONE DRIVE ADDRESS P.O. BOX 1550
KINGSPORT, TN 37660 CLARKSBURG, WV 26302

CANCELLED

04/06/2012