

4701441 P

WW-7
8-30-06



West Virginia Department of Environmental Protection
Office of Oil and Gas
WELL LOCATION FORM: GPS

API: 47-047-01441 WELL NO.: WV 508888 (WVC 4538 GP)

FARM NAME: Clyde and Louise Stewart

RESPONSIBLE PARTY NAME: EQT Production Company

COUNTY: McDowell DISTRICT: Sandy River

QUADRANGLE: Bradshaw 7.5'

SURFACE OWNER: Jessie R. & Tina L. Greenwell

ROYALTY OWNER: EQT Production Company, et al.

UTM GPS NORTHING: 4132724

UTM GPS EASTING: 426796 GPS ELEVATION: 497 m (1632 ft)

The Responsible Party named above has chosen to submit GPS coordinates in lieu of preparing a new well location plat for a plugging permit or assigned API number on the above well. The Office of Oil and Gas will not accept GPS coordinates that do not meet the following requirements:

1. Datum: NAD 1983, Zone: 17 North, Coordinate Units: meters, Altitude: height above mean sea level (MSL) – meters.
2. Accuracy to Datum – 3.05 meters
3. Data Collection Method:

Survey grade GPS : Post Processed Differential
Real-Time Differential

Mapping Grade GPS X: Post Processed Differential X
Real-Time Differential

4. **Letter size copy of the topography map showing the well location**

I the undersigned, hereby certify this data is correct to the best of my knowledge and belief and shows all the information required by law and the regulations issued and prescribed by the Office of Oil and Gas.

Steph O'Brien
Signature
12/6/13
Date

PS # 2180
Title
WV Department of Environmental Protection

RECEIVED
Office of Oil & Gas
DEC 19 2013

4701441P

Topo Quad: Bradshaw 7.5'

Scale: 1" = 2000'

County: McDowell

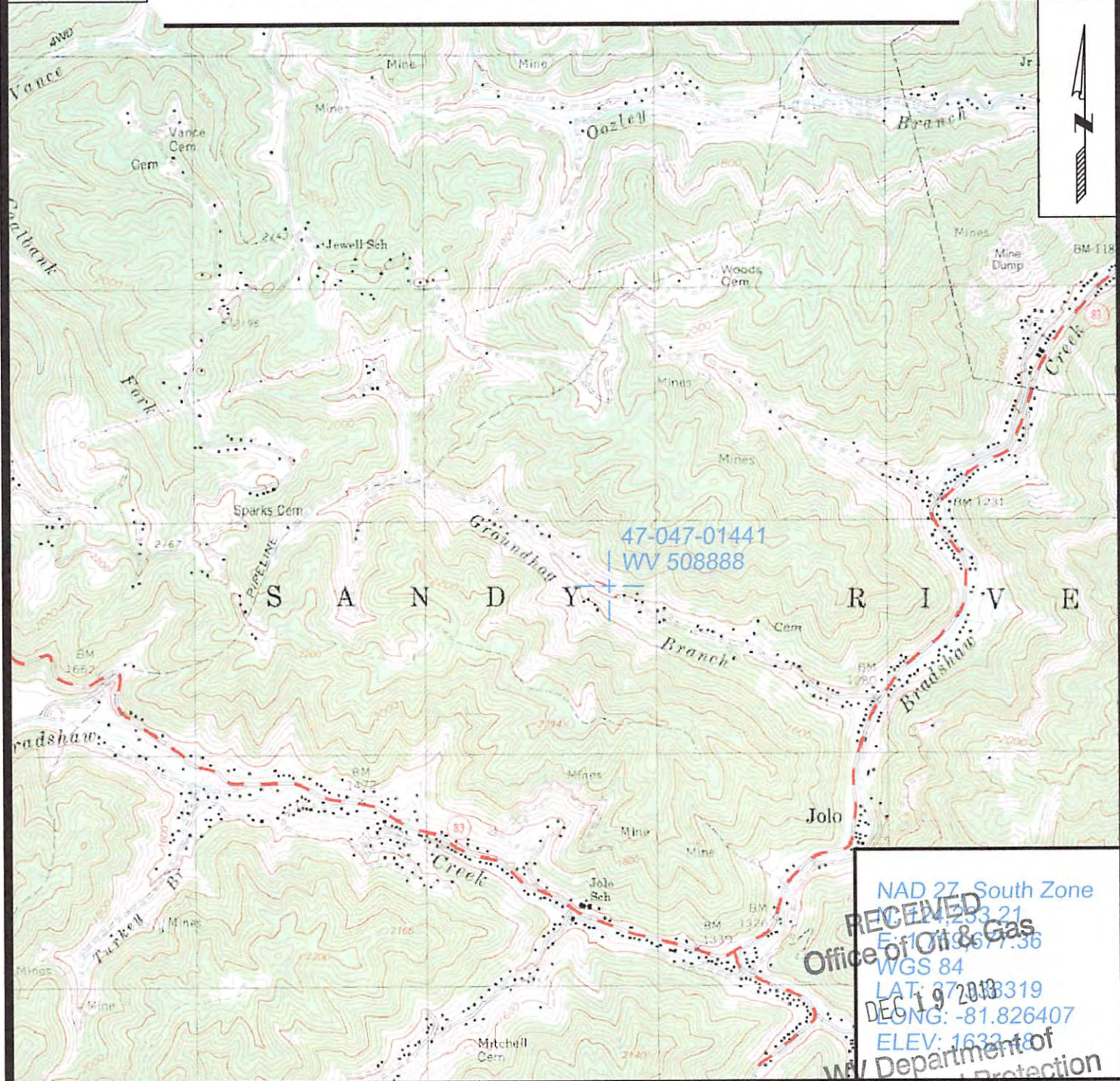
Date: November 27, 2013

District: Sandy River

Project No: 20-37-00-08

47-047-01441 WV 508888 (WVC 4538 GP)

Topo



RECEIVED
 Office of Oil & Gas
 WGS 84
 LAT: 37.28319
 DEC 19 2013
 LONG: -81.826407
 ELEV: 1633.18
 WV Department of
 Environmental Protection



SURVEYING AND MAPPING SERVICES PERFORMED BY:
ALLEGHENY SURVEYS, INC.
 1-800-482-8606
 P.O. BOX 438
 BIRCH RIVER, WV 26610
 PH: (304) 649-8606
 FAX: (304) 649-8608

PREPARED FOR:
EQT Production Company
 P.O. Box 280
 Bridgeport, WV 26330