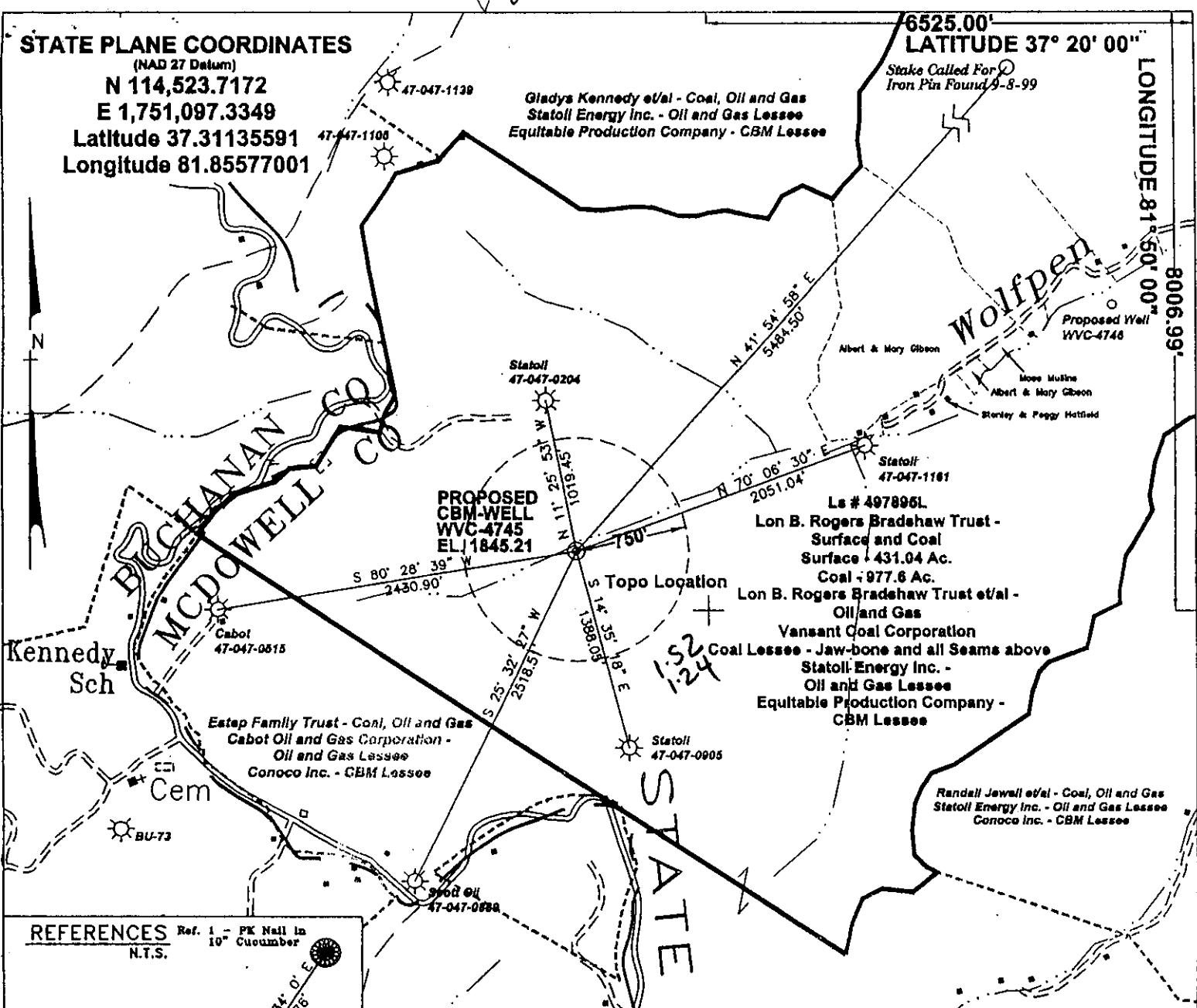


STATE PLANE COORDINATES

(NAD 27 Datum)
N 114,523.7172
E 1,751,097.3349
Latitude 37.31135591
Longitude 81.85577001

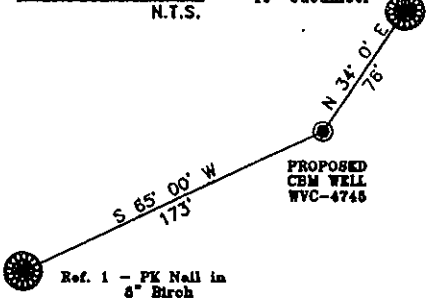
6525.00'
LATITUDE 37° 20' 00"

LONGITUDE 81° 50' 00"
8006.99'



REFERENCES

Ref. 1 - PK Nail in 10" Cucumber N.T.S.



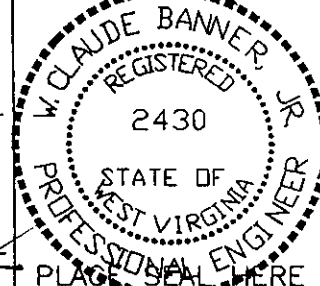
Lon B. Rogers Bradshaw Trust - Surface and Coal Surface - 431.04 Ac. Coal - 977.6 Ac. Lease # 497895L - 977.6 Ac.
Lon B. Rogers Bradshaw Trust et/al - Oil and Gas Vansant Coal Corporation - Coal Lessee - Jaw-bone and all seams above
Statoll Energy Inc. - Oil and Gas Lessee
Equitable Production Company - CBM Lessee

Notes: (+) Denotes location of well on USGS map.

FILE No. 8-10-00-3SP
 DRAWING NAME WVC-4745\WVC-4745
 SCALE 1" = 1000'
 MINIMUM DEGREE OF ACCURACY 1 : 2500
 PROVEN SOURCE OF ELEVATION Global Positioning System (GPS)

I THE UNDERSIGNED, HEREBY CERTIFY THAT THIS PLAT IS CORRECT TO THE BEST OF MY KNOWLEDGE AND BELIEF AND SHOWS ALL THE INFORMATION REQUIRED BY LAW AND THE REGULATIONS ISSUED AND PRESCRIBED BY THE DEPARTMENT OF MINES.

(SIGNED) W. Claude Banner Jr.
 R.P.E. 2430 R.P.S. 2430



STATE OF WEST VIRGINIA
DIVISION OF ENVIRONMENTAL PROTECTION
OFFICE OF OIL AND GAS
NITRO, WV

DATE AUGUST 10 2000
 OPERATOR'S WELL No. WVC-4745
 API WELL No. 47 - 047 - 01465C
 STATE COUNTY PERMIT

WELL TYPE: OIL GAS CBM LIQUID INJECTION WASTE DISPOSAL
 (IF "GAS") PRODUCTION X STORAGE DEEP SHALLOW
 LOCATION: ELEVATION 1845.21 WATER SHED WOLF PEN BRANCH OF BRADSHAW CREEK OF DRY FORK
 DISTRICT SANDY RIVER COUNTY MCDOWELL
 QUADRANGLE BRADSHAW, WV

SURFACE OWNER LON B. ROGERS BRADSHAW TRUST ACREAGE ± 431.04 TAX MAP 343 PARCEL 3
 CBM ROYALTY OWNER LON B. ROGERS BRADSHAW TRUST ET/AL LEASE ACREAGE 3836.13
 LEASE No. 497895L

PROPOSED WORK: DRILL X CONVERT DRILL DEEPER REDRILL FRACTURE OR STIMULATE X PLUG OFF OLD FORMATION PERFORATE NEW FORMATION OTHER PHYSICAL CHANGE IN WELL (SPECIFY)

PLUG AND ABANDON CLEAN OUT AND REPLUG
 TARGET FORMATION PENNSYLVANIAN COALS ESTIMATED DEPTH SEP 08 2000
 WELL OPERATOR EQUITABLE PRODUCTION COMPANY DESIGNATED AGENT LARRY AYLESTOCK
 ADDRESS 1710 PENNSYLVANIA AVENUE CAHRLESTON, WV 25328 ADDRESS P.O. BOX 1550 CLARKSBURG, WV 26302

6-6 383

State of West Virginia
Division of Environmental Protection
Section of Oil and Gas

ALB

Well Operator's Report of Well Work

Farm Name: Bradshaw Trust, etal

Operator Well No.: WVC-4745

LOCATION: Elevation: 1,845.21

Quadrangle: Bradshaw

District: Sandy River

County: McDowell

Latitude: 8006.99 Feet South of
Longitude: 6525 Feet West of

Deg. 37 Minutes 20 Seconds 0
Deg. 81 Minutes 50 Seconds 0

Company: Equitable Production Company
P.O. Box 2347, 1710 Pennsylvania Avenue
Charleston, WV 25328

Agent: Steve Perdue

Inspector: Ofie Helmick
Permit Issued: 9/7/00

Well work commenced: 09/27/00
Well work completed: 12/19/00

Verbal Plugging

Permission granted on: _____

Rotary Rig Cable Rig _____

Total Depth 1755 feet

Fresh water depths (ft) _____

Salt water depths (ft) _____

Is coal being mined in area? _____

Coal Depths (ft): _____

Casing & Tubing Size	Used in Drilling	Left in Well	Cement Fill Up Cu. Ft.
12-3/4"	35'	35'	Grtd
9-5/8"	341'	341'	130 FT ³
4-1/2"	1748'	1748'	316 FT ³
1.9"		1621'	

RECEIVED
State of West Virginia
Section of Oil & Gas
Permitting
MAR 20 2001
Division of Environmental Protection

OPEN FLOW DATA

Producing formation Poco 7,6,5,4,3/Firecreek/L Firecreek/Poco 9,8

Pay Zone Depth (ft): _____

See Attach for details

Gas: Initial open flow NS

Bbl/d

Final open flow 59

Final open flow: _____

Time of open flow between initial and final tests _____

Hours

Static rock pressure 322 psig (surface pressure) after _____

Hours

Second producing formation _____

Pay Zone Depth (ft): _____

Gas: Initial open flow _____ MCF/d

Oil: Initial open flow _____ Bbl/d

Final open flow: _____ MCF/d

Final open flow: _____

Time of open flow between initial and final tests _____

Hours

Static rock pressure _____ psig (surface pressure) after _____

Hours

NOTE: ON BACK OF THIS FORM PUT THE FOLLOWING: 1) DETAILS OF PERFORATED INTERVALS, FRACTURING OR STIMULATING, PHYSICAL CHANGE, ETC. 2) THE WELL LOG WHICH IS A SYSTEMATIC DETAILED GEOLOGICAL RECORD OF ALL FORMATIONS, INCLUDING COAL ENCOUNTERED BY THE WELLBORE.

For: BLAZER ENERGY CORPORATION

By: Burkha Blushad
Date: 3/19/2001

MAY 4 2001

McDOW 1465

EASTERN STATES OIL & GAS, INC.
WR-35 COMPLETION REPORT - Attachment
Well Treatment Summary

Well: WVC-4745

API# 47-047-01465

Date	10/16/2000	10/16/2000				
Type Frac Acid, N ₂ , Foam, Water	70 Q Foam	70 Q Foam				
Zone Treated	Poco 7,6,5,4,3	Firecreek,L Firecreek, Poco 9,8				
# Perfs From - To:	17 1214-1375.5	12 971.5-1134.5				
BD Pressure @ psi	1030	2394				
ATP psi	3200	3800				
Avg. Rate, B=B/M, S= SCF/M						
Max. Treat Press psi	3459	4276				
ISIP psi	1550	1700				
Frac Gradient	1.50	1.50				
10 min S-I Pressure (5 min)	1350 (5 min)	1340 (5 min)				
Material Volume						
Sand-sks	126	100				
Water-bbl	500	423				
SCF N ₂	740,100	575,000				
Acid-gal	710 gal 7.5%	600 gal 7.5%				
NOTES:						

TOP

971
1133.5
1289
1313.75
1373.75
1409
1585
1758

BASE

974
1134.5
1291
1316.25
1376.5
1410

FORMATION

Firecreek
Poca 8
Poca 5
Poca 4
Poca 3
Poca 2
Mauch Chunk
TD

REMARKS*

