

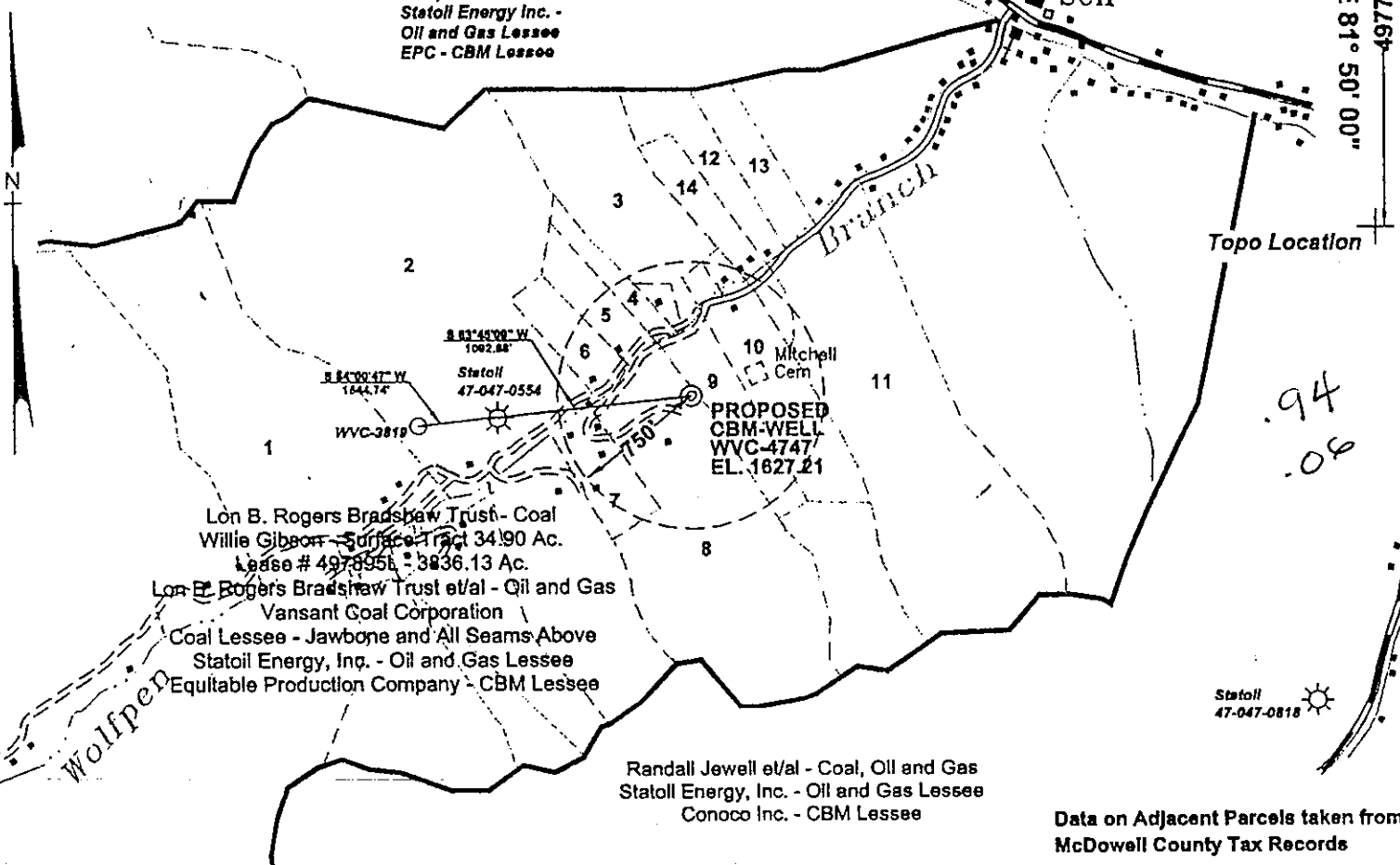
338.19'

LATITUDE 37° 20' 00"

LONGITUDE 81° 50' 00"

STATE PLANE COORDINATES  
(NAD 27 Datum)  
N 117,498.6954  
E 1,757,311.1386  
Latitude 37.31968139  
Longitude 81.83449915

Lon B. Rogers et al -  
Coal, Oil and Gas  
Statoll Energy Inc. -  
Oil and Gas Lessee  
EPC - CBM Lessee

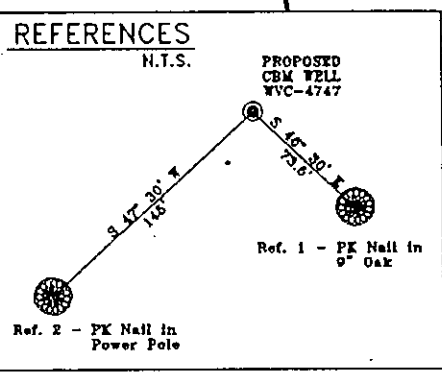


Lon B. Rogers Bradshaw Trust - Coal  
Willie Gibson - Surface Tract 34.90 Ac.  
Lease # 497895L - 3836.13 Ac.  
Lon B. Rogers Bradshaw Trust et al - Oil and Gas  
Vansant Coal Corporation  
Coal Lessee - Jawbone and All Seams Above  
Statoll Energy, Inc. - Oil and Gas Lessee  
Equitable Production Company - CBM Lessee

Randall Jewell et al - Coal, Oil and Gas  
Statoll Energy, Inc. - Oil and Gas Lessee  
Conoco Inc. - CBM Lessee

Data on Adjacent Parcels taken from  
McDowell County Tax Records

- Adjacent Surface Owners
1. Sharon, Danny Riffe
  2. Larry, Betty Mitchell
  3. Chris Day
  4. Wanda Davis
  5. Walter Davis
  6. Charles Hagerman
  7. Hubert Hagerman
  8. Willie Gibson
  9. John and Phyllis Mitchell
  10. Alta and Shelby Hagerman
  11. Allen and Rita Adams
  12. Polly Blakely
  13. Ralph D. Riffe
  14. Bell Marie Reed



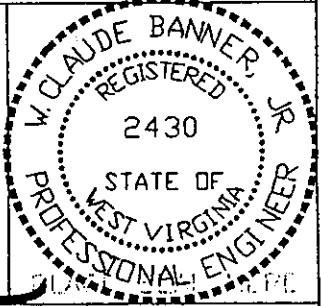
- 426064.1  
4130463.5
- Lon B. Rogers Bradshaw Trust - Coal  
Willie Gibson - Surface Tract 34.90 Ac.  
Lease # 497895L - 3836.13 Ac.  
Lon B. Rogers Bradshaw Trust et al - Oil and Gas  
Vansant Coal Corporation  
Coal Lessee - Jawbone and All Seams Above  
Statoll Energy, Inc. - Oil and Gas Lessee  
Equitable Production Company - CBM Lessee

Notes: Proposed Location Below Jawbone Seam  
(+) Denotes location of well on USGS map.

FILE No. 000906/LL  
DRAWING NAME 4747 PLAT  
SCALE 1" = 1000'  
MINIMUM DEGREE OF ACCURACY 1 : 2500  
PROVEN SOURCE OF ELEVATION Global Positioning System (GPS)

I THE UNDERSIGNED, HEREBY CERTIFY THAT THIS PLAT IS CORRECT TO THE BEST OF MY KNOWLEDGE AND BELIEF AND SHOWS ALL THE INFORMATION REQUIRED BY LAW AND THE REGULATIONS ISSUED AND PRESCRIBED BY THE DEPARTMENT OF MINES.

(SIGNED) *W. Claude Banner Jr.*  
R.P.E. 2430 R.P.S.



STATE OF WEST VIRGINIA  
DIVISION OF ENVIRONMENTAL PROTECTION  
OFFICE OF OIL AND GAS  
NITRO, WV

DATE SEPTEMBER 7 2000  
OPERATOR'S WELL No. WVC-4747  
API WELL No. 47 - 047 - 01471C  
STATE COUNTY PERMIT

WELL TYPE: OIL GAS CBM LIQUID INJECTION WASTE DISPOSAL  
(IF "GAS") PRODUCTION X STORAGE DEEP SHALLOW

LOCATION: ELEVATION 1627.21 WATER SHED WOLF PEN BRANCH OF BRADSHAW CREEK OF DRY FORK  
DISTRICT SANDY RIVER COUNTY McDOWELL  
QUADRANGLE BRADSHAW, WV

SURFACE OWNER WILLIE GIBSON ACREAGE ± 34.90 TAX MAP 344 PARCEL 8  
CBM ROYALTY OWNER LON B. ROGERS BRADSHAW TRUST ET/AL LEASE ACREAGE 3836.13  
LEASE No. 497895L

PROPOSED WORK: DRILL X CONVERT DRILL DEEPER REDRILL FRACTURE OR STIMULATE X PLUG OFF OLD FORMATION PERFORATE NEW FORMATION OTHER PHYSICAL CHANGE IN WELL (SPECIFY) 6-6 350

PLUG AND ABANDON CLEAN OUT AND REPLUG

TARGET FORMATION PENNSYLVANIAN COALS ESTIMATED DEPTH APR 20 2001  
WELL OPERATOR EQUITABLE PRODUCTION COMPANY DESIGNATED AGENT LARRY AYLESTOCK  
ADDRESS 1710 PENNSYLVANIA AVENUE CHARLESTON, WV 25328 ADDRESS P.O. BOX 1550 CLARKSBURG, WV 26302

McDow 1471C

State of West Virginia  
Division of Environmental Protection  
Section of Oil and Gas

Revised          *Br D*

Well Operator's Report of Well Work

Farm Name: Bradshaw, Lon B Rogers Operator Well No.: WVC 4747  
(WV-504747-Rogers)

LOCATION: Elevation: 1627.21' Quadrangle: Bradshaw  
District: Sandy River County: McDowell  
Latitude: 4977.66 Feet South of 37 Deg. 20 0  
Longitude: 338.19' Feet West of 81 Deg. 50 0

Company: Equitable Production Company  
P.O. Box 2347, 1710 Pennsylvania Avenue  
Charleston, WV 25328

Agent: Stephen Purdue

Inspector: Ofie Helmick  
Permit Issued: 4/17/01  
Well work commenced: 09/10/01  
Well work completed: 10/12/01

Verbal Plugging  
Permission granted on: \_\_\_\_\_

Rotary Rig  Cable Rig \_\_\_\_\_

Total Depth 1562 feet

Fresh water depths (ft) \_\_\_\_\_

Salt water depths (ft) \_\_\_\_\_

Casing & Tubing Size	Used in Drilling	Left in Well	Cement Fill Up Cu. Ft.
12 3/4"	48'	48'	grouted
9 5/8"	315'	315'	118 ft³
4 1/2"	1525'	1525'	258 ft³

RECEIVED  
Office of Oil & Gas  
Permitting  
DEC 07 2001  
WV Department of  
Environmental Protection

Is coal being mined in area?  
Coal Depths (ft): 70'-73'; 145'-147'; 192'-195'; 224'-226'; 465'-470'; 550'-552'; 650'-651'; 880'-883';  
1030'-1033'; 1070'-1072'; 1110'-1112'

**OPEN FLOW DATA**

Producing formation Lower Coal Seams, Upper Coal Seams Pay Zone Depth (ft): \_\_\_\_\_ See Attach for details

Gas: Initial open flow 0 MCF/d Oil: Initial open flow \_\_\_\_\_ Bbl/d  
Final open flow: 45 MCF/d Final open flow: \_\_\_\_\_  
Time of open flow between initial and final tests \_\_\_\_\_ Hours

Static rock pressure 275 psig (surface pressure) after \_\_\_\_\_ Hours

Second producing formation Pay Zone Depth (ft): \_\_\_\_\_

Gas: Initial open flow \_\_\_\_\_ MCF/d Oil: Initial open flow \_\_\_\_\_ Bbl/d  
Final open flow: \_\_\_\_\_ MCF/d Final open flow: \_\_\_\_\_  
Time of open flow between initial and final tests \_\_\_\_\_ Hours

Static rock pressure \_\_\_\_\_ psig (surface pressure) after \_\_\_\_\_ Hours

NOTE: ON BACK OF THIS FORM PUT THE FOLLOWING: 1) DETAILS OF PERFORATED INTERVALS, FRACTURING OR STIMULATING, PHYSICAL CHANGE, ETC. 2) THE WELL LOG WHICH IS A SYSTEMATIC DETAILED GEOLOGICAL RECORD OF ALL FORMATIONS, INCLUDING COAL ENCOUNTERED BY THE WELLBORE.

*Kathy L. Conway*  
For: Equitable Production Company

By: *[Signature]*  
Date: 12/3/01

DEC 14 2001

McDOW 1471

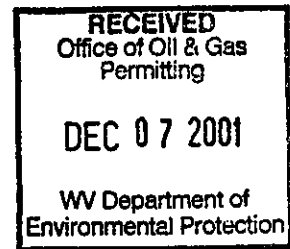
**EASTERN STATES OIL & GAS, INC.**  
**WR-35 COMPLETION REPORT - Attachment**  
**Well Treatment Summary**

Well: WVC-504747-Rogers

API# 47-047-01471

Date	10/01/01	10/01/01			
Type Frac Acid, N <sub>2</sub> , Foam, Water	65-70 Q Foam	65-70 Q Foam			
Zone Treated	Lower Coal Seams <i>Poca 7</i>	Upper Coal Seams <i>Poca 8</i>			
# Perfs From - To:	22 <i>Squire</i> 1006'-1353'	10 762' - 909'			
BD Pressure @ psi	2430	3750			
ATP psi	3595	3470			
Avg. Rate, B=B/M, S= SCF/M	16 B (foam)	30 B (foam)			
Max. Treat Press psi	4010	3740			
ISIP psi	2056	1250			
Frac Gradient	2.18	1.9			
10 min S-I Pressure	1670 (5 min)	990 (5 min)			
Material Volume:					
Sand-sks	60	80			
Water-bbl	410	340			
SCF N <sub>2</sub>	649,854	530,666			
Acid-gal	820 gal 7 ½%	600 gal 7.7%			
NOTES:					

TOP	BOTTOM	FORMATION	REMARKS
0	48'	Over Burton	
48'	70'	Sandstone	
70'	73'	Coal	
73'	100'	Sandy Shale	
100'	145'	Sandstone	
145'	147'	Coal	
147'	160'	Sandy Shale	
160'	192'	Streaked Sandstone	
192'	195'	Coal	
195'	224'	Sandstone	
224'	226'	Coal	
226'	465'	Sandy Shale	
465'	470'	Coal	
470'	550'	Sandstone	
550'	552'	Coal	
552'	650'	Sandy Shale	
650'	651'	Coal	
761.75'	763.25'	Fire Creek	
870.5'	871.75'	Poca 9	
908.75	909.25'	Poca 8	
1005.5'	1007.5'	Poca 7	
1022.75'	1025.25	Poca 6	
1047.5'	1048.5'	Poca 6L	
1074.75'	1075.5'	Poca 5	
1108'	1109.5'	Poca 4	
1186.5'	1189.5'	Poca 3	
1235.5'	1236.25'	Poca 2	
1257.75'	1258.5'	Poca 1	
1283.5'	1284.25'	Poca 1L	



WVC-504747-Rogers  
API # 47-047-01471

1351.5'

1353.25' Squire Jim  
1562 TD

GT @ TD = NS

DEC 14 2001

McDow 1471