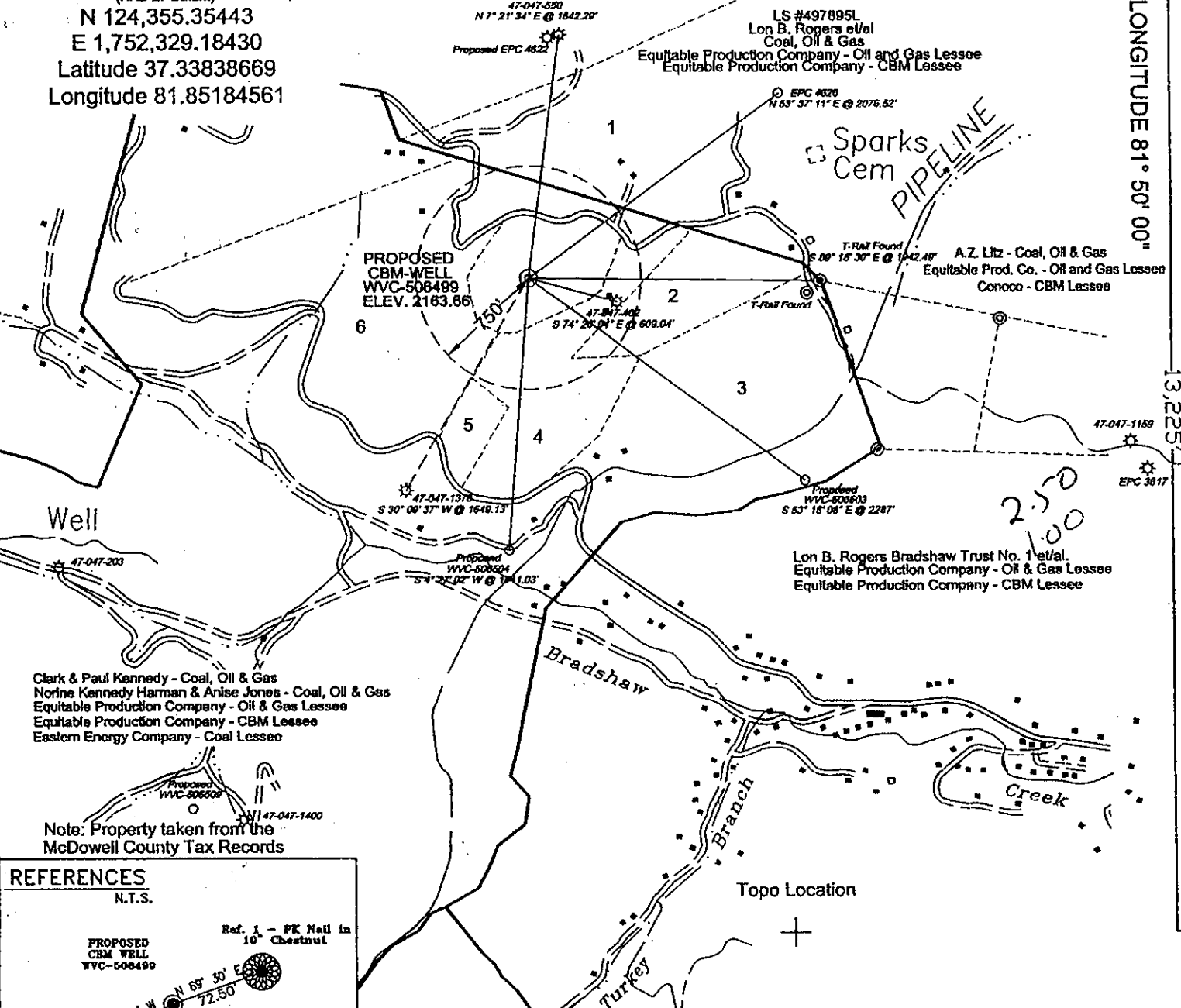


STATE PLANE COORDINATES

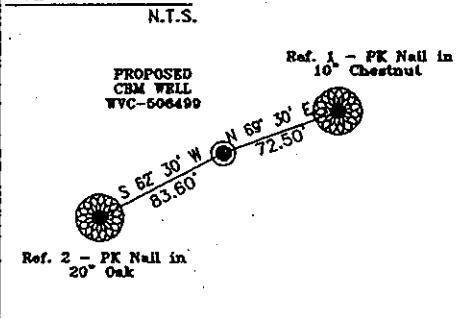
(NAD 27 Datum)
 N 124,355.35443
 E 1,752,329.18430
 Latitude 37.33838669
 Longitude 81.85184561

LATITUDE 37° 22' 30"

LONGITUDE 81° 50' 00"



REFERENCES

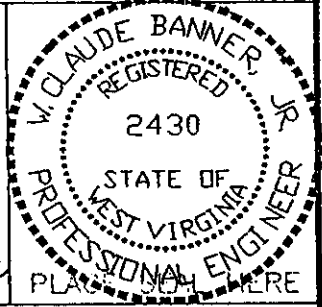


Cleo Kennedy - Surface Owner
 Clark & Paul Kennedy - Coal, Oil & Gas
 Norine Kennedy Harman & Anise Jones - Coal, Oil & Gas
 Equitable Production Company - Oil & Gas Lessee
 Equitable Production Company - CBM Lessee
 Eastern Energy Company - Coal Lessee

- Adjacent Surface Owners
1. Ernie & Mildred Grizzel Estate
 2. Arvie Baker
 3. Elie Blankenship Estate
 4. Cleo Kennedy
 5. Randall & Doanna Dobbs
 6. Clark & Paul Kennedy

FILE No. 7-16-01-1KF
 DRAWING NAME \506499\PLAT_WVC_506499
 SCALE 1" = 1000'
 MINIMUM DEGREE OF ACCURACY 1 : 2500
 PROVEN SOURCE OF ELEVATION Global Positioning System (GPS)

I THE UNDERSIGNED, HEREBY CERTIFY THAT THIS PLAT IS CORRECT TO THE BEST OF MY KNOWLEDGE AND BELIEF AND SHOWS ALL THE INFORMATION REQUIRED BY LAW AND THE REGULATIONS ISSUED AND PRESCRIBED BY THE DEPARTMENT OF MINES.
 (SIGNED) W. Claude Banner
 R.P.E. 2430 R.P.S.



STATE OF WEST VIRGINIA
 DIVISION OF ENVIRONMENTAL PROTECTION
 OFFICE OF OIL AND GAS
 NITRO, WV

DATE OCTOBER 1 2001
 OPERATOR'S WELL No. WVC-506499
 API WELL No. 47 - 047 - 01593C
 STATE COUNTY PERMIT

WELL TYPE: OIL GAS CBM LIQUID INJECTION WASTE DISPOSAL
 (IF "GAS") PRODUCTION STORAGE DEEP SHALLOW

LOCATION: ELEVATION 2163.66 WATER SHED UNNAMED TRIBUTARY OF BRADSHAW CREEK OF DRY FORK
 DISTRICT SANDY RIVER COUNTY McDOWELL
 QUADRANGLE BRADSHAW, WV

SURFACE OWNER CLEO KENNEDY ACREAGE ± 20 TAX MAP 303 Parcel 59
 CBM ROYALTY OWNER EQUITABLE PRODUCTION COMPANY LEASE ACREAGE 1011.01
 LEASE No. 497885L

PROPOSED WORK: DRILL X CONVERT DRILL DEEPER REDRILL FRACTURE OR
 STIMULATE X PLUG OFF OLD FORMATION PERFORATE NEW
 FORMATION OTHER PHYSICAL CHANGE IN WELL (SPECIFY)
 PLUG AND ABANDON CLEAN OUT AND REPLUG

TARGET FORMATION PENNSYLVANIAN COALS ESTIMATED DEPTH
 WELL OPERATOR EQUITABLE PRODUCTION COMPANY DESIGNATED AGENT STEPHEN PERDUE
 ADDRESS 1710 PENNSYLVANIA AVENUE ADDRESS 1710 PENNSYLVANIA AVE
CHARLESTON, WV 25328 CHARLESTON, WV 25328

Mc Dow 1593C

AD

State of West Virginia
Division of Environmental Protection
Section of Oil and Gas

Well Operator's Report of Well Work

Farm Name: Kennedy, Cleo Operator Well No.: 506499

LOCATION: Elevation: 2163.66' Quadrangle: Bradshaw

District: Sandy River County: McDowell

Latitude: 13,225 Feet South of 37 Deg. Minutes 22 Seconds 30
Longitude: 5300 Feet West of 81 Deg. Minutes 50 Seconds 0

Company: Equitable Production Company
P.O. Box 2347, 1710 Pennsylvania Avenue
Charleston, WV 25328

Agent: Steve Perdue

Inspector: Ofie Helmick

Permit Issued: 1/10/2002

Well work commenced: 05/04/02

Well work completed: 07/05/02

Verbal Plugging

Permission granted on:

Rotary Rig X Cable Rig

Total Depth 2006 feet

Fresh water depths (ft)

Salt water depths (ft) 1630'

Is coal being mined in area?

Coal Depths (ft):

Casing & Tubing Size	Used in Drilling	Left in Well	Cement Fill Up Cu. Ft.
13 3/8"	15.8'	15.8'	grouted
9 5/8"	855'	855'	318.6 ft ³
4 1/2"	1964.5'	1964.5'	563.73 ft ³
2 3/8"		1902'	

OPEN FLOW DATA

Producing formation Lower Coal Seams; Middle Coal Seams; Upper Coal Seams

Pay Zone Depth (ft):

See Attach for details

Gas: Initial open flow 0 MCF/d

Oil: Initial open flow Bbl/d

Final open flow: 56 (in line) MCF/d

Final open flow:

Time of open flow between initial and final tests Hours

Static rock pressure 216 psig (surface pressure) after Hours

Second producing formation

Pay Zone Depth (ft):

Gas: Initial open flow MCF/d

Oil: Initial open flow Bbl/d

Final open flow: MCF/d

Final open flow:

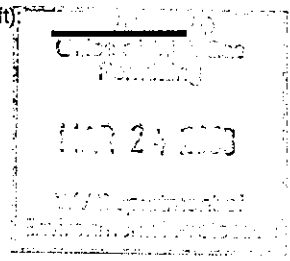
Time of open flow between initial and final tests Hours

Static rock pressure psig (surface pressure) after Hours

NOTE: ON BACK OF THIS FORM PUT THE FOLLOWING: 1) DETAILS OF PERFORATED INTERVALS, FRACTURING OR STIMULATING, PHYSICAL CHANGE, ETC. 2) THE WELL LOG WHICH IS A SYSTEMATIC DETAILED GEOLOGICAL RECORD OF ALL FORMATIONS, INCLUDING COAL ENCOUNTERED BY THE WELLBORE.

Kathy L. Murray
For: Equitable Production Company

By: *[Signature]*
Date: 3/18/03



MCDOW 1593

MAY 2 2003

EQUITABLE PRODUCTION COMPANY
WR-35 COMPLETION REPORT - Attachment
Well Treatment Summary

Well: WVC-506499

API# 47-047-01593

Date	06/27/02	06/27/02	06/27/02			
Type Frac Acid, N ₂ , Foam, Water	70 Q Foam	70 Q Foam	70 Q Foam			
Zone Treated	Poca 1,2,3,4	Fire Creek L. Fire Creek Poca 9	Beckley			
# Perfs From - To:	29 1692' - 1873.7'	20 1356' - 1420.5'	20 1251.5' - 1257'			
BD Pressure @ psi	2171	3087	2331			
ATP psi	2914	2587	3650			
Avg. Rate, B=B/M, S= SCF/M	9.2 B	10.2 B	7 B			
Max. Treat Press psi	3753	3396	4100			
ISIP psi	1337	1694	2046			
Frac Gradient	1.18	1.65	2.06			
10 min S-I Pressure	2007 (5 min)	1446 (5 min)	1650			
Material Volume						
Sand-sks	92	68	57			
Water-bbl	385	284	191			
SCF N ₂	512000	413000	420000			
Acid-gal	900 gal 15%	900 gal 15%	400 gal 15%			
NOTES:						

TOP	BOTTOM	FORMATION	REMARKS
			Water @ 1630'
921.25'	927.5'	SEWELL A	
957.5'	959.5'	SEWELL B	
1043.25'	1043.75'	WELCH	
1251.5'	1257.25'	BECKLEY	
1355.75'	1359'	FIRE CREEK LOWER FIRE	
1382.75'	1383.5'	CREEK	
1419.75'	1420.25'	POCA 9	
1436.5'	1437'	POCA 8	
1691.75'	1693.75'	POCA 4	
1775'	1777'	POCA 3	
1820.75'	1824.25'	POCA 2	
1871.75'	1873.75'	POCA 1	
1928'	1929.5'	SQUIRE JIM	
		MAUCH CHUNK	
	2006'	TD	

