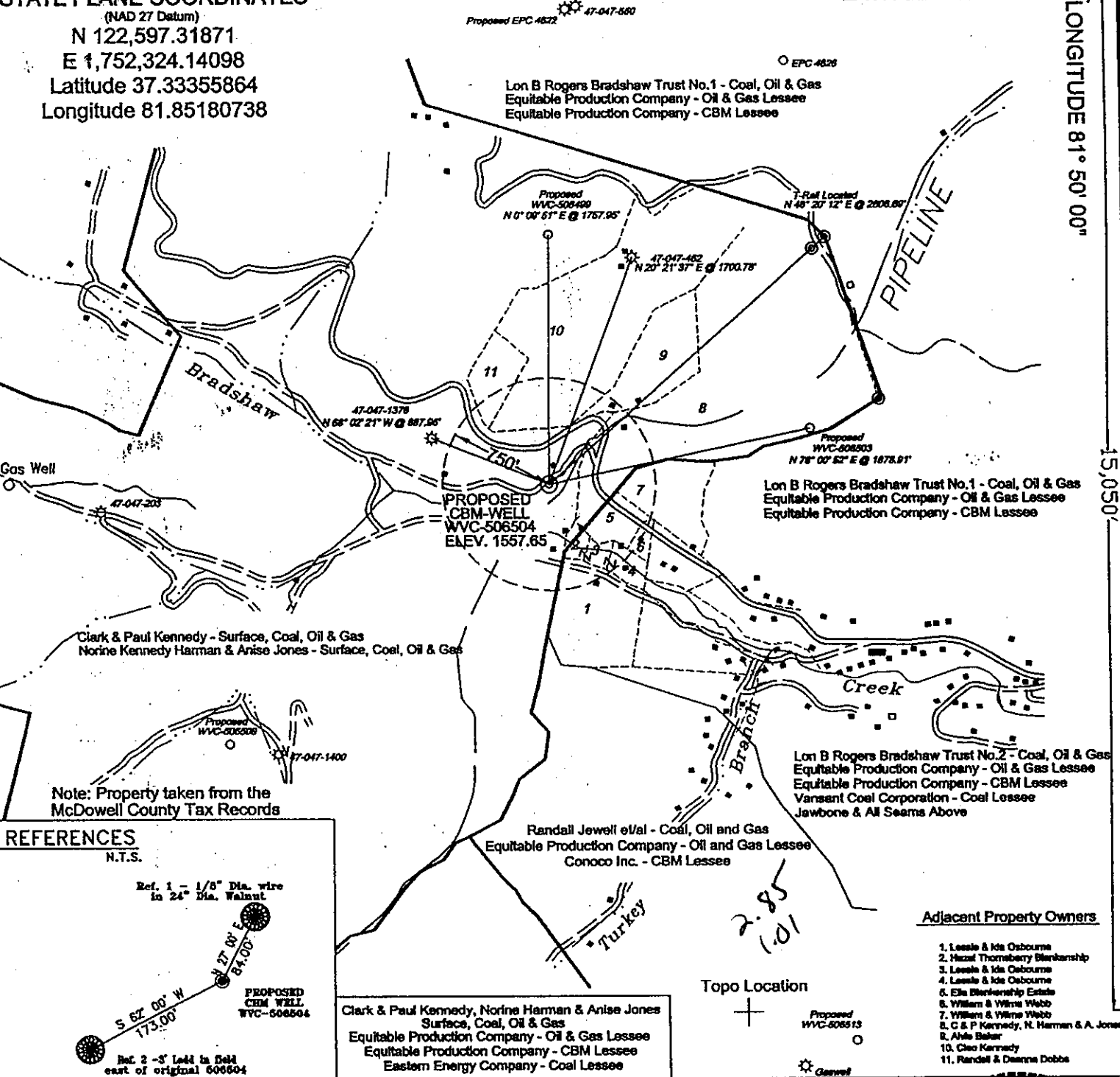


STATE PLANE COORDINATES

(NAD 27 Datum)  
 N 122,597.31871  
 E 1,752,324.14098  
 Latitude 37.33355864  
 Longitude 81.85180738

5,350'  
 LATITUDE 37° 22' 30"

LONGITUDE 81° 50' 00"

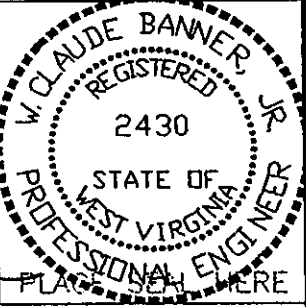


REFERENCES

N.T.S.  
 Ref. 1 - 1/8" Dia. wire in 24" Dia. Walnut  
 Ref. 2 - 3" Lead in field east of original 506504  
 PROPOSED CBM WELL WVC-506504  
 S 62° 00' W 173.00'  
 27.00' 84.00'

FILE No. 10-10-01-1KF  
 DRAWING NAME \506504\PLAT 506504  
 SCALE 1" = 1000'  
 MINIMUM DEGREE OF ACCURACY 1 : 2500  
 PROVEN SOURCE OF ELEVATION Global Positioning System (GPS)

I, THE UNDERSIGNED, HEREBY CERTIFY THAT THIS PLAT IS CORRECT TO THE BEST OF MY KNOWLEDGE AND BELIEF AND SHOWS ALL THE INFORMATION REQUIRED BY LAW AND THE REGULATIONS ISSUED AND PRESCRIBED BY THE DEPARTMENT OF MINES.  
 (SIGNED) *Claude Banner*  
 R.P.E. 2430 R.P.S.



STATE OF WEST VIRGINIA  
 DIVISION OF ENVIRONMENTAL PROTECTION  
 OFFICE OF OIL AND GAS  
 NITRO, WV

DATE OCTOBER 15 2001  
 OPERATOR'S WELL No. WVC-506504  
 API WELL No. 47 - 047 - 015950  
 STATE COUNTY PERMIT

WELL TYPE: OIL GAS CBM LIQUID INJECTION WASTE DISPOSAL  
 (IF "GAS") PRODUCTION  STORAGE DEEP SHALLOW

LOCATION: ELEVATION 1557.65 WATER SHED BRADSHAW CREEK OF DRY FORK  
 DISTRICT SANDY RIVER COUNTY McDOWELL  
 QUADRANGLE BRADSHAW, WV

SURFACE OWNER CLARK & PAUL KENNEDY, NORINE HARMAN & ANISE JONES ACREAGE ±842.85 TAX MAP 323 Parcel 18  
 CBM ROYALTY OWNER CLARK & PAUL KENNEDY, NORINE HARMAN & ANISE JONES LEASE AC. 1011.01  
 LEASE No. 497885L

PROPOSED WORK: DRILL  CONVERT  DRILL DEEPER  REDRILL  FRACTURE OR  
 STIMULATE  PLUG OFF OLD FORMATION  PERFORATE NEW  
 FORMATION  OTHER PHYSICAL CHANGE IN WELL (SPECIFY) \_\_\_\_\_  
 PLUG AND ABANDON  CLEAN OUT AND REPLUG

TARGET FORMATION PENNSYLVANIAN COALS ESTIMATED DEPTH \_\_\_\_\_ MAR 08 2002  
 WELL OPERATOR EQUITABLE PRODUCTION COMPANY DESIGNATED AGENT STEPHEN PERDUE  
 ADDRESS 1710 PENNSYLVANIA AVENUE ADDRESS 1710 PENNSYLVANIA AVE.  
CHARLESTON, WV 25328 CHARLESTON, WV 25328

6-6 Bradshaw plan (303)

Mc Dow 15950

*APF*

State of West Virginia  
Division of Environmental Protection  
Section of Oil and Gas

Well Operator's Report of Well Work

Farm Name: Kennedy, Clark & Paul Operator Well No.: 506504

LOCATION: Elevation: 1,557.65 Quadrangle: Bradshaw

District: Sandy River County: McDowell

Latitude: 15050 Feet South of 37 Deg. 22 Minutes 30 Seconds  
Longitude: 5350 Feet West of 81 Deg. 50 Minutes 0 Seconds

Company: Equitable Production Company  
P.O. Box 2347, 1710 Pennsylvania Avenue  
Charleston, WV 25328

Agent: Stephen G. Perdue

Inspector: Offie Helmick

Permit Issued: 3/6/2002

Well work commenced: 05/07/02

Well work completed: 06/10/02

Verbal Plugging

Permission granted on:

Rotary Rig X Cable Rig \_\_\_\_\_

Total Depth 1400 feet

Fresh water depths (ft) None Reported

Salt water depths (ft) None Reported

Is coal being mined in area? \_\_\_\_\_

Coal Depths (ft): \_\_\_\_\_

Casing & Tubing Size	Used in Drilling	Left in Well	Cement Fill Up Cu. Ft.
12-3/4"	31'	31'	Grtd
9-5/8"	350'	350'	148 FT <sup>3</sup>
4-1/2"	1349'	1349'	290 FT <sup>3</sup>
2-3/8"		1318'	

OPEN FLOW DATA

Producing formation Poca 3/Squire, Poca 6-4/Beckley/L Firecreek

Pay Zone Depth (ft): See Attach for details

Gas: Initial open flow \_\_\_\_\_ MCF/d Oil: Initial open flow \_\_\_\_\_ Bbl/d

Final open flow: 89 (In Line) MCF/d Final open flow: \_\_\_\_\_

Time of open flow between initial and final tests \_\_\_\_\_ Hours

Static rock pressure 260 psig (surface pressure) after \_\_\_\_\_ Hours

Second producing formation \_\_\_\_\_

Pay Zone Depth (ft): \_\_\_\_\_

Gas: Initial open flow \_\_\_\_\_ MCF/d Oil: Initial open flow \_\_\_\_\_ Bbl/d

Final open flow: \_\_\_\_\_ MCF/d Final open flow: \_\_\_\_\_

Time of open flow between initial and final tests \_\_\_\_\_ Hours

Static rock pressure \_\_\_\_\_ psig (surface pressure) after \_\_\_\_\_ Hours

NOTE: ON BACK OF THIS FORM PUT THE FOLLOWING: 1) DETAILS OF PERFORATED INTERVALS, FRACTURING OR STIMULATING, PHYSICAL CHANGE, ETC. 2) THE WELL LOG WHICH IS A SYSTEMATIC DETAILED GEOLOGICAL RECORD OF ALL FORMATIONS, INCLUDING COAL ENCOUNTERED BY THE WELLBORE.

*Kathy L. Dewey*  
For: Equitable Production Company

By: *Paul A. Davis*  
Date: 3/24/03

*McDOW 1595*

**EQUITABLE PRODUCTION COMPANY**  
**WR-35 COMPLETION REPORT - Attachment**  
**Well Treatment Summary**

Well: WV-506504

API# 47-047-01595

Date	5/31/2002	5/31/2002	5/31/2002			
Type Frac Acid, N <sub>2</sub> , Foam, Water	68/70 Q Foam	68/70 Q Foam	68/70 Q Foam			
Zone Treated	Poca 3,2,1 Squire Jim	Poca 6,5,4	Beckley Firecreek L Firecreek			
# Perfs From - To:	14 1161.5- 1311.75	12 994.5-1076.5	13			
BD Pressure @ psi	3479	3202	3499			
ATP psi	3358	3155	3223			
Avg. Rate, B=B/M, S= SCF/M	13.6 B	21 B	19.4 B			
Max. Treat Press psi	4218	3858	3761			
ISIP psi	2309	2442	2247			
Frac Gradient	2.30	2.78	3.74			
10 min S-I Pressure	1761 5 min	1389 5 min	1100 5 min			
Material Volume						
Sand-sks	15	80	85			
Water-bbl	195	300	290			
SCF N <sub>2</sub>	256,000	570,000	457,000			
Acid-gal	800 gal 15% acid	700 gal 15% acid	400 gal 15% acid			
NOTES:	SD-high pressure					

TOP	BASE	FORMATION	REMARKS*
615	622.25	Beckley	
732.75	735.25	Firecreek	
757.25	758	L Firecreek	
994.25	999	Poca 6	
1041.25	1041.75	Poca 5	
1074.75	1076.75	Poca 4	
1161	1163	Poca 3	
1209.25	1214.25	Poca 2	
1257	1258.25	Poca 1	
1310.5	1312	Squire Jim	