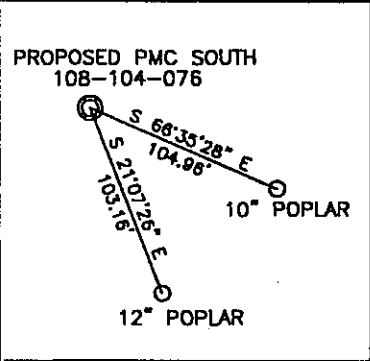


(+) DENOTES LOCATION OF WELL ON 7.5' TOPOGRAPHIC MAP



REFERENCES | SCALE 1"=100'
 WELL COORDINATES
 WV STATE PLANE
 SOUTH ZONE NAD 1927
 N. 106406.05
 E. 1772487.11

TEE Engineering Company, Inc.
 320 Carter Hill Court
 Lexington, KY 40509
 (606) 263-5330
 Fax (606) 263-5345



P.O. Box 219
 Sunville, KY 41659
 (606) 478-9024
 Fax (606) 478-9019

GeoMet Operating Company, Inc.
 Well No. PMC South 108-104-076

FILE NO. 1883-08
 DRAWING NO. WELL PMC 076 PLAT
 SCALE: 1" = 2,000'
 MIN. DEGREE OF ACCURACY 1:2,500
 PROVEN SOURCE OF ELEVATION
 GPS STATION TEC-1 (ELEV. 2406.60)

I, THE UNDERSIGNED, HEREBY CERTIFY THAT THIS PLAT IS CORRECT TO THE BEST OF MY KNOWLEDGE AND BELIEF AND SHOWS ALL THE INFORMATION REQUIRED BY LAW AND THE REGULATIONS ISSUED AND PRESCRIBED BY THE DEPARTMENT OF MINES.

Don F. Blackburn
 (SIGNATURE)

R.P.E. 8643 R.P.S.



(SEAL)

STATE OF WEST VIRGINIA
 DEPARTMENT OF ENVIRONMENTAL PROTECTION
 OFFICE OF OIL AND GAS

DATE FEBRUARY 7, 2003
 OPERATOR'S WELL NO. PMC SOUTH 108-104-076
 API WELL NO. 47 - 047 - 01964C
 STATE COUNTY PERMIT

WELL TYPE: OIL GAS X CBM LIQUID INJECTION WASTE DISPOSAL
 (IF "GAS") PRODUCTION STORAGE DEEP SHALLOW

LOCATION: ELEVATION 1,997.31' NORTHING 106,406.05 EASTING 1,772,487.11
 DISTRICT BIG CREEK WATER SHED MUDLICK BR. OF LITTLE SLATE CREEK
 QUADRANGLE BRADSHAW COUNTY McDOWELL

SURFACE OWNER POCAHONTAS MINING, LLC. ACREAGE 1,108
 CBM ROYALTY OWNER POCAHONTAS MINING, LLC. LEASE ACREAGE 1,108
 LEASE NO. RECORDING IN PROGRESS

PROPOSED WORK: DRILL CONVERT DRILL DEEPER REDRILL FRACTURE OR
 STIMULATE PLUG OFF OLD FORMATION PEPORATE NEW
 FORMATION OTHER PHYSICAL CHANGE IN WELL (SPECIFY) _____

PLUG AND ABANDON CLEAN OUT AND REPLUG

TARGET FORMATION NEW RIVER AND POCAHONTAS COALS ESTIMATED DEPTH 2,209'
 WELL OPERATOR GEOMET OPERATING COMPANY, INC. DESIGNATED AGENT KERRY HILL
 ADDRESS 5336 STADIUM TRACE PARKWAY SUITE 3206 ADDRESS 330 HARPER PARK DRIVE SUITE A
BIRMINGHAM, ALABAMA 35244 BECKLEY, WV 25801

(Bradshaw 270)

APR 17 2003

Mc Dow 1704 C

State of West Virginia
Department of Environmental Protection
Office of Oil and Gas

MS

Well Operator's Report of Well Work

FARM NAME: Pocahontas Mining, LLC.

OPERATOR WELL NO.: 108-104 -076

LOCATION:

Elevation: 1,997.31' Quadrangle: Bradshaw

District: Big Creek County: McDowell
Latitude: 9,309' Feet South of 37 Deg. 17 Min. 30 Sec.
Longitude: 762' Feet West of 81 Deg. 45 Min. 00 Sec.

Company: <u>GeoMet Operating Company</u>	Casing & Tubing	Used in Drilling	Left in Well	Cement fill up Cu. Ft.
Address: <u>5336 Stadium Trace Parkway, Suite 206 Birmingham, Alabama 35244</u>	<u>13-3/8"</u>	<u>26'</u>	<u>26'</u>	
Agent: <u>Gregg Cleary</u>				
Inspector: <u>Ronnie Scott</u>	<u>8-5/8"</u>	<u>332'</u>	<u>332'</u>	<u>75/Pumped 120</u>
Date Permit Issued: <u>April 10, 2003</u>				
Date Well Work Commenced: <u>September 10, 2003</u>	<u>5-1/2"</u>	<u>1750'</u>	<u>1750'</u>	<u>304/Pumped 319</u>
Date Well Work Completed: <u>September 18, 2003</u>				
Verbal Plugging:				
Date Permission granted on:				
Rotary <u>XXXX</u> Cable Rig				
Total Depth (feet): <u>1765'</u>				
Fresh Water Depth (feet): <u>Unknown</u>				
Salt Water Depth (feet): <u>Unknown</u>				
Is coal being mined in area (N/Y)? <u>No</u>				

Coal Depths (feet): 351, 355, 435, 486, 529, 551, 562, 621, 667, 895, 897, 926, 927, 950, 979, 992, 1013, 1042, 1107, 1221, 1222, 1249, 1250, 1287, 1397, 1459, 1585, 1586, 1596, 1760.

OPEN FLOW DATA

Producing formation All Zones Commingled Pay zone depth (ft) _____
Gas: Initial Open Flow N/A MCF/d Oil: Initial Open Flow _____ Bbl/d
Final Open Flow N/A MCF/d Final Open Flow _____ Bbl/d
Time of Open Flow between initial and final tests N/A Hours
Static Rock Pressure 12 psig (surface pressure) after 96 Hours

NOTE: ON BACK OF THIS FORM PUT THE FOLLOWING: 1). DETAILS OF PERFORATED INTERVALS, FRACTURING OR STIMULATING, PHYSICAL CHANGE, ETC. 2). THE WELL LOG WHICH IS A SYSTEMATIC DETAILED GEOLOGICAL RECORD OF ALL FORMATIONS, INCLUDING COAL ENCOUNTERED BY THE WELLBORE.

SIGNED: _____
BY: Dundrea Smith
DATE: _____

NOV 14 2003

McDow 1764

**GeoMet Operating Company, Inc.
Perforation and Frac Volume Specification**

Well Name PMC South 076 PBDT 1750'

Zone and Perforation Table

Frac	1584	1587	Ball Out	Bridge Plug Set @	Est Sand Weight	Actual Sand Weight
Stage 1 Interval	1594	1597				
N2 Scf	266,000		1470'		30,000	31,000
Acid	100					
Gel Volume	8,200					
ISIP	1,593					
ATP	2,290					
AIR	35	BPM				
Stage 2 Interval	1,395	1398				
N2 Scf	266,000		1350'			
Acid	200					
Gel Volume	6,000					
ISIP	1,591					
ATP	3,290					
AIR	18	BPM				
Stage 3 Interval	1,285	1288				
N2 Scf	176,000		1270'			
Acid	200					
Gel Volume	5,600					
ISIP	1,641					
ATP	2,270					
AIR	26	BPM				
Stage 4 Interval	1,248	1251				
N2 Scf	171,000		24 Frac Balls On Plug @ 1225'			
Acid	200					
Gel Volume	5,600					
ISIP	1,607					
ATP	2,350					
AIR	26	BPM				
Stage 5 Interval	1,210	1213				
N2 Scf						
Acid						
Gel Volume						
ISIP						
ATP						
AIR	BPM					

DRILL DATA HOLE - NOAH HORN WELL DRILLING, INC.

COMPANY: GEO-MET .

HOLE NO. PMC-SOUTH-076

LOCATION: BUG HURLEY HOLLOW

DRILL: RIG 94

DATE STARTED: 09-10-2003

ELECTRIC LOGGED: YES

DATE COMPLETED: 09-12-2003

GROUTED: YES

DEPTH		THICKNESS	STRATA	REMARKS
FROM	TO	FT.	DESCRIPTION	VOIDS, ETC
0	20	20	OVERBURDEN	26' W/13-3/8" CASING
20	26	06	SANDSTONE/SOFT SAND STR./SANDSTONE	
26	30	04	SANDSTONE/COAL/SANDY SHALE	
30	61	31	SANDY SHALE/COAL STR./SANDSTONE	
61	92	31	SANDSTONE/SANDY SHALE/COAL/SANDST	
92	123	31	SANDSTONE/SANDY SHALE	
123	154	31	SANDY SHALE/SANDSTONE/COAL STR.	
154	185	31	SANDSTONE/COAL STR./SANDY SHALE	
185	215	30	SAND/SANDY SHALE STR.	
215	245	30	SANDSTONE	
245	275	30	SANDY SHALE STR./SANDSTONE	
275	305	30	SANDSTONE/SANDY SHALE	
305	335	30	SANDSTONE/SANDY SHALE STR./SANDST.	
335	345	10	SANDSTONE	332' W/8-5/8" CASING
345	360	15	SANDSTONE	
360	390	30	SANDSTONE/SANDY SHALE	
390	420	30	SANDY SHALE/SANDSTONE/COAL STR.	
420	450	30	SANDY SHALE/COAL STR./SANDSTONE	
450	480	30	SANDSTOEN/COAL STR./SANDY SHALE	
480	510	30	COAL STR./SANDY SHALE	
510	540	30	SANDSTONE/SANDY SHALE STRKS.	
540	570	30	SANDSTONE/SANDY SHALE/COAL STR.	
570	600	30	SANDY SHALE/SANDSTONE/SANDY SHALE	
600	630	30	SANDY SHALE/COAL	
630	660	30	SANDY SHALE/COAL SANDSTONE STRKS.	
660	690	30	SANDY SHALE/COAL STR.	
690	720	30	SANDY SHALE	
720	750	30	SANDY SHALE/SANDSTONE STR.	
750	780	30	SANDSTONE/SANDY SHALE STR.	
780	810	30	SANDSTONE/SANDY SHALE STR.	
810	840	30	SANDSTONE	
840	870	30	SANDSTONE/SANDY SHALE STR.	
870	900	30	SANDSTONE (2)COAL STR./SANDY SHALE	
900	930	30	SANDY SHALE/SANDSTONE/SANDY SHALE	
930	960	30	SANDY SHALE/COAL STR./SANDSTONE	
960	990	30	SANDSTONE/SANDY SHALE/COAL STR.	
990	1020	30	SANDY SHALE/COAL STR.	

Well Name PMC South 076

PBTD

1750'

Zone and Perforation Table

	Ball Out	Bridge Plug Set @	Est Sand Weight	Actual Sand Weight
Stage 6 Interval	1,040	1,043		
N2 Scf	194,000		20,000	19,000
Acid	200	15%		
Gel Volume	5,600			
ISIP	1,527			
ATP	2,640			
AIR	25	BPM		
	1020'			
Stage 7 Interval	987	980	25,000	27,000
N2 Scf	222,000			
Acid	450			
Gel Volume	7,800			
ISIP	1,394			
ATP	2,520			
AIR	29	BPM		
	991-993 Ball Out 950'			
Stage 8 Interval	925	928	30,000	31,000
N2 Scf	261,000			
Acid	200			
Gel Volume	8,000			
ISIP	1,910			
ATP	2,610			
AIR	31	BPM		
	No Plug			
Stage 9 Interval				
N2 Scf				
Acid				
Gel Volume				
ISIP				
ATP				
AIR		BPM		
Stage 10 Interval				
N2 Scf				
Acid				
Gel Volume				
ISIP				
ATP				
AIR				

Mc Dow 1764

NOV 14 2003

GEO-MET
HOLE #PMC-SOUTH 076
PAGE 2

1020	1050	30	SANDY SHALE
1050	1080	30	SANDY SHALE/SANDSTONE
1080	1110	30	SANDSTONE/COAL STR./SANDY SHALE
1110	1140	30	SANDSTONE/SANDY SHALE
1140	1170	30	SANDY SHALE
1170	1200	30	SANDY SHALE STR./COAL/SANDSTONE
1200	1230	30	COAL (2) SANDSTONE/SANDY SHALE
1230	1260	30	SANDSTONE/COAL STR./SANDSTONE/ SANDY SHALE
1260	1290	30	SANDY SHALE/COAL STR./SANDSTONE
1290	1320	30	SANDSTONE/SANDY SHALE STR.
1320	1350	30	SANDSTONE/SANDY SHALE STR.
1350	1380	30	SANDSTONE
1380	1410	30	SANDSTONE/SANDY SHALE STR.
1410	1440	30	SANDSTONE
1440	1470	30	SANDSTONE
1470	1500	30	SANDY SHALE/SANDSTONE
1500	1530	30	SANDSTONE/SANDY SHALE STR.
1530	1560	30	SANDSTONE
1560	1590	30	SANDSTONE/SANDY SHALE STR./COAL ST
1590	1620	30	SANDSTONE/SANDY SHALE
1620	1650	30	SANDSTONE/SANDY SHALE/SANDSTONE
1650	1680	30	SANDSTONE/SANDY SHALE STR.
1680	1710	30	SANDSTONE
1710	1740	30	SANDY SHALE/SANDSTONE/SHALE
1740	1756	16	1750' W/5-1/2" CASING

TOTAL DEPTH: 1756'
26' W/13-3/8" CASING
332' W/8-5/8" CASING
1750' W/5-1/2" CASING

NOV 14 2003

McDow 1764