

WW-7  
8-30-06



West Virginia Department of Environmental Protection  
Office of Oil and Gas  
**WELL LOCATION FORM: GPS**

API: 4704701790 WELL NO.: 6276  
FARM NAME: Consolidation Coal  
RESPONSIBLE PARTY NAME: Diversified Production LLC  
COUNTY: McDowell DISTRICT: Elkhorn  
QUADRANGLE: Keystone  
SURFACE OWNER: Imperial Resources, LLC  
ROYALTY OWNER: Imperial Resources, LLC  
UTM GPS NORTHING: 462,419.73  
UTM GPS EASTING: 4,136,970.37 GPS ELEVATION: 2458 ft.

The Responsible Party named above has chosen to submit GPS coordinates in lieu of preparing a new well location plat for a plugging permit or assigned API number on the above well. The Office of Oil and Gas will not accept GPS coordinates that do not meet the following requirements:

- Datum: NAD 1983, Zone: 17 North, Coordinate Units: meters, Altitude: height above mean sea level (MSL) – meters.
- Accuracy to Datum – 3.05 meters
- Data Collection Method:  
Survey grade GPS ; Post Processed Differential

Real-Time Differential

Mapping Grade GPS ; Post Processed Differential

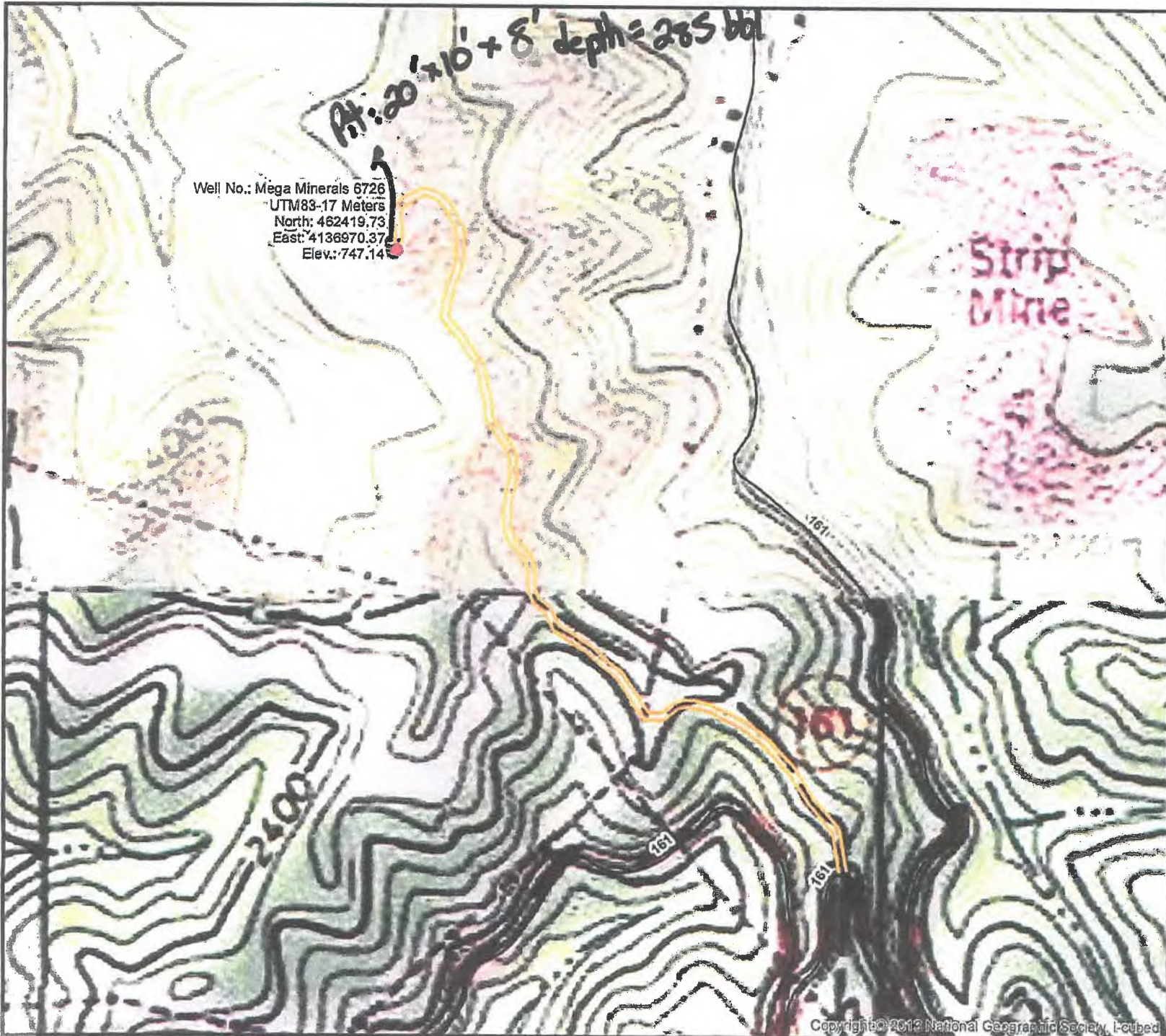
Real-Time Differential

- Letter size copy of the topography map showing the well location.**

I the undersigned, hereby certify this data is correct to the best of my knowledge and belief and shows all the information required by law and the regulations issued and prescribed by the Office of Oil and Gas.

 Director Production 5-13-2020  
Signature Title Date

47-047-01790P



Well No.: Mega Minerals 6726  
 UTM83-17 Meters  
 North: 462419.73  
 East: 4136970.37  
 Elev.: 747.14

Pt: 20' x 10' + 8' depth = 285 bbl

Strip Mine



Diversified Gas & Oil Corporation  
 100 Diversified Way  
 Pikeville KY. 41051

MEGA MINERALS 6726

Plugging Map

47-047-01790

**Legend**

- Well
- Access Road
- Pits
- Pad
- Public Roads
- USA Topo Maps

