

West Virginia State Plane Coordinates  
NAD 27

LATITUDE 37° 30' 00"

3060' Topo Location

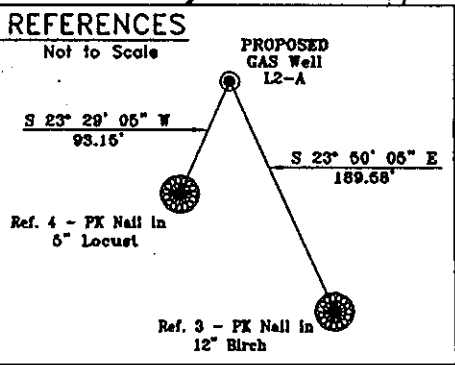
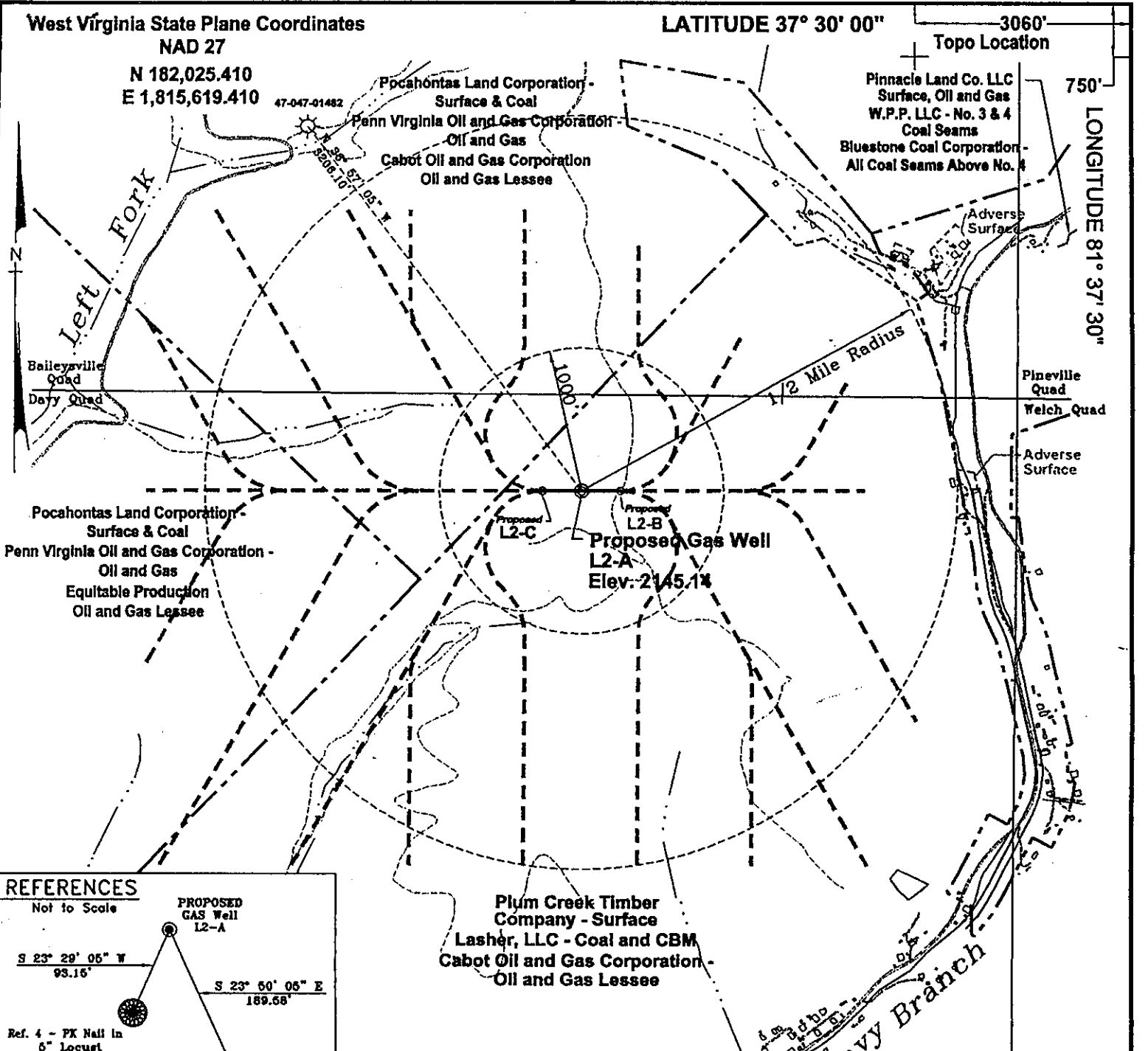
N 182,025.410  
E 1,815,619.410

47-047-01482

Pocahontas Land Corporation -  
Surface & Coal  
Penn Virginia Oil and Gas Corporation -  
Oil and Gas  
Cabot Oil and Gas Corporation  
Oil and Gas Lessee

Pinnacle Land Co. LLC  
Surface, Oil and Gas  
W.P.P. LLC - No. 3 & 4  
Coal Seams  
Bluestone Coal Corporation -  
All Coal Seams Above No. 4

750'  
LONGITUDE 81° 37' 30"



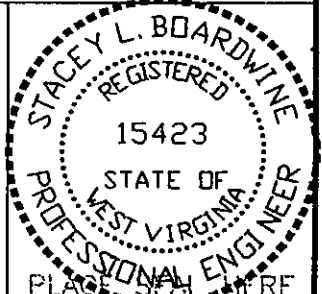
Plum Creek Timber Company - Surface  
Lasher, LLC - Coal and CBM  
Cabot Oil and Gas Corporation -  
Oil and Gas Lessee

**Notes:**  
No known domestic water supplies within 1000 feet.  
(+) Denotes location of well on USGS map.

FILE No. CDXGAS  
DRAWING NAME \CDX-2003\L-2Wells  
DRAWING NAME PlatL-2A  
SCALE 1" = 1000'  
MINIMUM DEGREE OF ACCURACY 1 : 2500  
PROVEN SOURCE OF ELEVATION GPS - GLOBAL POSITIONING SYSTEM

I THE UNDERSIGNED, HEREBY CERTIFY THAT THIS PLAT IS CORRECT TO THE BEST OF MY KNOWLEDGE AND BELIEF AND SHOWS ALL THE INFORMATION REQUIRED BY LAW AND THE REGULATIONS ISSUED AND PRESCRIBED BY THE DEPARTMENT OF MINES.

(SIGNED) Stacy L Beardwine  
R.P.E. 15423 R.P.S. \_\_\_\_\_



**STATE OF WEST VIRGINIA**  
**DEPARTMENT OF ENVIRONMENTAL PROTECTION**  
**OFFICE OF OIL AND GAS**  
**CHARLESTON, WV**

DATE JULY 23, 2003  
OPERATOR'S WELL No. L2-A  
API WELL No. 47 - 047 - 01826C  
STATE COUNTY PERMIT

WELL TYPE: OIL    GAS    CBM    LIQUID INJECTION    WASTE DISPOSAL     
(IF "GAS") PRODUCTION X STORAGE    DEEP    SHALLOW   

LOCATION: ELEVATION 2145.14 WATER SHED UNNAMED TRIBUTARY OF LEFT FORK OF DAVY BRANCH OF TUG FORK  
DISTRICT BROWNS CREEK COUNTY McDOWELL  
QUADRANGLE DAVY, WV

SURFACE OWNER PLUM CREEK TIMBER COMPANY ACREAGE 3,786.13  
CBM ROYALTY OWNER LASHER, LLC LEASE ACREAGE             
PENN VIRGINIA OIL AND GAS CORPORATION  
LEASE No.           

PROPOSED WORK: DRILL X CONVERT    DRILL DEEPER    REDRILL    FRACTURE OR  
STIMULATE    PLUG OFF OLD FORMATION    PERFORATE NEW  
FORMATION    OTHER PHYSICAL CHANGE IN WELL (SPECIFY)           

PLUG AND ABANDON    CLEAN OUT AND REPLUG     
TARGET FORMATION POCAHONTAS NO. 3 AND PENN. COALS ESTIMATED DEPTH 1420'  
WELL OPERATOR CDX GAS, LLC DESIGNATED AGENT JOSEPH ZUPANICK  
ADDRESS P.O. BOX 609 ADDRESS P.O. BOX 609  
PINEVILLE, WV 24874 PINEVILLE, WV 24874

McDow 1826-C

State of West Virginia  
Division of Environmental Protection  
Section of Oil & Gas  
Well Operator's Report of Well Work

*177*

Farm name: Plum Creek Timber Company

Operator Well No: L-2A

Location: Elevation: 2145.14'

Quadrangle: Davy

District: Browns Creek

County: McDowell

Latitude: 3060 Feet South of 37 Deg. 30 Min. 00 Sec.  
Longitude: 750 Feet West of 81 Deg. 37 Min. 30 Sec.

Company: CDX Gas, LLC  
P.O. Box 609  
Pineville, WV 24874

Agent: JOSEPH A. ZUPANICK

Inspector: Raulph Triplett  
Permit Issued: 12/1/2003  
Well Work commenced: 6/29/2004  
Well Work completed: 8/30/2004  
Verbal plugging  
Permission granted on:  
Rotary x Cable \_\_\_\_\_ Rig  
Total depth (ft) 1280'  
Fresh water depths (ft) N/A  
Salt water depths (ft) N/A  
Is coal being mined in the area (Y/N)? Y  
Coal depths (ft): 1067'

| Casing & Tubing Size | Used in Drilling | Left in Well | Cement Fill up (cuft) |
|----------------------|------------------|--------------|-----------------------|
| 16"                  | 30'              | 30'          | 6                     |
| 9 5/8"               | 728'             | 728'         | 240                   |
| 7"                   | 1167'            | 1167'        | 175                   |
|                      |                  |              |                       |

OPEN FLOW DATA

Producing formation Completion A (Non-producer) Pay zone depth (ft) \_\_\_\_\_  
 Gas: Initial open flow N/A Mcf/d Oil: Initial open flow \_\_\_\_\_ Bbl/d  
 Final open flow N/A Mcf/d Final open flow \_\_\_\_\_ Bbl/d  
 Time of open flow between initial and final tests: \_\_\_\_\_ hours  
 Static rock pressure \_\_\_\_\_ psig (surface pressure) after \_\_\_\_\_ hours

Second Producing formation \_\_\_\_\_ Pay zone depth \_\_\_\_\_ (ft)  
 Gas: Initial open flow \_\_\_\_\_ Mcf/d Oil: Initial open flow \_\_\_\_\_ Bbl/d  
 Final open flow \_\_\_\_\_ Mcf/d Final open flow \_\_\_\_\_ Bbl/d  
 Time of open flow between initial and final tests: \_\_\_\_\_ hours  
 Static rock pressure \_\_\_\_\_ psig (surface pressure) after \_\_\_\_\_ hours

Third Producing formation \_\_\_\_\_ Pay zone depth \_\_\_\_\_ (ft)  
 Gas: Initial open flow \_\_\_\_\_ Mcf/d Oil: Initial open flow \_\_\_\_\_ Bbl/d  
 Final open flow \_\_\_\_\_ Mcf/d Final open flow \_\_\_\_\_ Bbl/d  
 Time of open flow between initial and final tests: \_\_\_\_\_ hours  
 Static rock pressure \_\_\_\_\_ psig (surface pressure) after \_\_\_\_\_ hours

Note: ON BACK OF THIS FORM, PUT THE FOLLOWING: 1) DETAILS OF PERFORATED INTERVALS, FRACTURING OR STIMULATING, PHYSICAL CHANGE, ETC. 2) THE WELL LOG WHICH IS A SYSTEMATICK DETAILED GEOLOGICAL RECORD OF ALL FORMATIONS, INCLUDING COAL ENCOUNTERED BY THE WELLBORE.

RECEIVED  
Office of Oil & Gas  
Office of Chief  
NOV 03 2004  
WV Department of  
Environmental Protection

For: Charles T. Akers  
CDX Gas, LLC  
By: [Signature]  
Date: 10/25/04

*McDow 1826*

Operator: L-2A  
 API No. 47-047-01826  
 Location: McDowell County

Details of Perforated Intervals, Fracturing or Stimulation, Physical Change, Etc. – N/A

Well Log & Geologic Record - Depths from G.L.

| Lithology   | Depth in feet |        |
|-------------|---------------|--------|
|             | Top           | Bottom |
| Casing      | 0             | 10     |
| Sandstone   | 10            | 65     |
| Sandy Shale | 65            | 75     |
| Sandstone   | 75            | 95     |
| Sandy Shale | 95            | 140    |
| Shale       | 140           | 175    |
| Sandy Shale | 175           | 465    |
| Sandstone   | 465           | 470    |
| Sandy Shale | 470           | 478    |
| Sandstone   | 478           | 515    |
| Sandy Shale | 515           | 585    |
| Sandstone   | 585           | 610    |
| Sandy Shale | 610           | 660    |
| Shale       | 660           | 710    |
| Sandy Shale | 710           | 855    |
| Shale       | 855           | 862    |
| Sandstone   | 862           | 923    |
| Shale       | 923           | 960    |
| Sandy Shale | 960           | 980    |
| Shale       | 980           | 1067   |
| Coal        | 1067          | 1069   |
| Shale       | 1069          | 1212   |
| Sandstone   | 1212          | 1280   |
| End         |               |        |
|             |               |        |
|             |               |        |
|             |               |        |
|             |               |        |
|             |               |        |
|             |               |        |
|             |               |        |