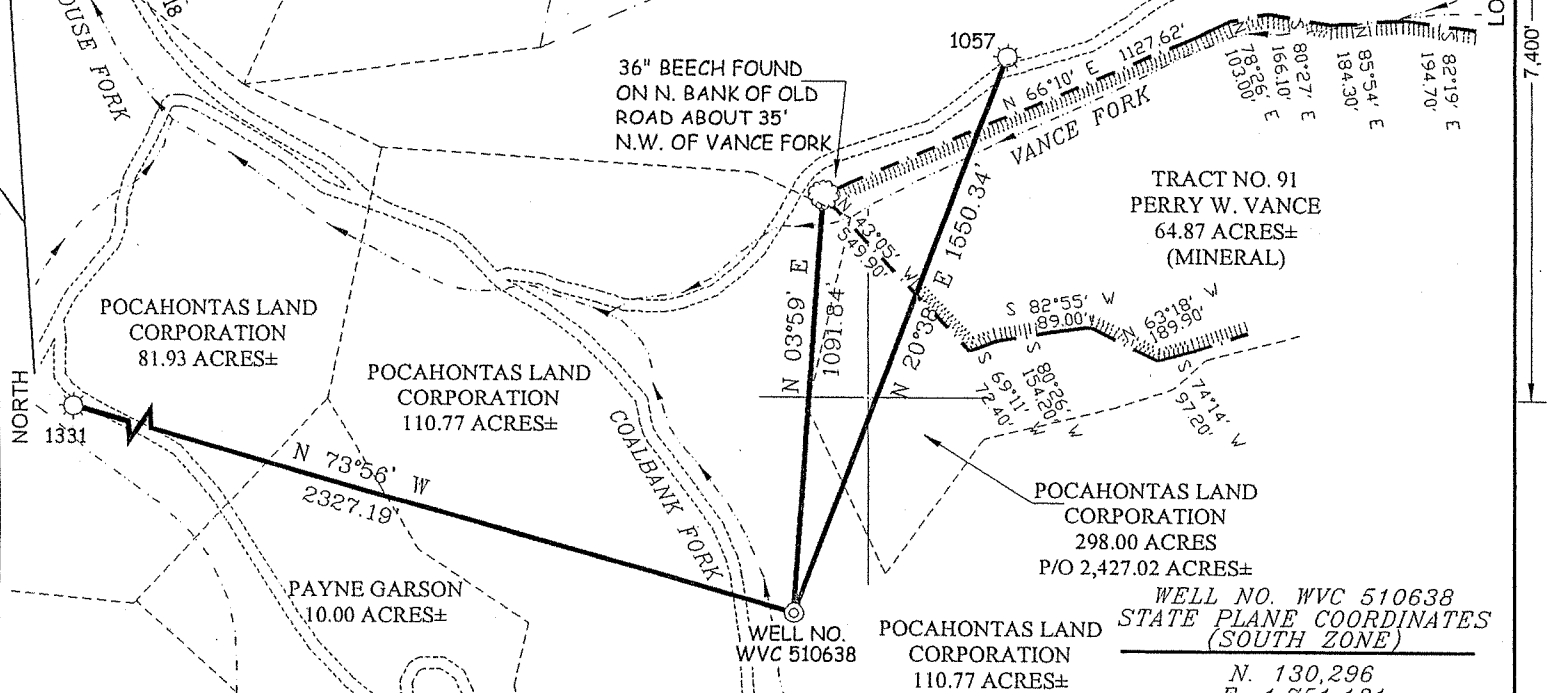


POCAHONTAS LAND CORPORATION COALBED METHANE LEASE

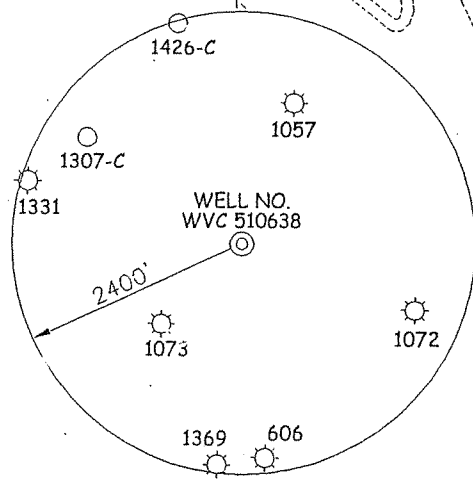
15,379.43 ACRES± WELL NO. WVC 510638

POCAHONTAS LAND CORPORATION
298.00 ACRES
P/O 2,427.02 ACRES±

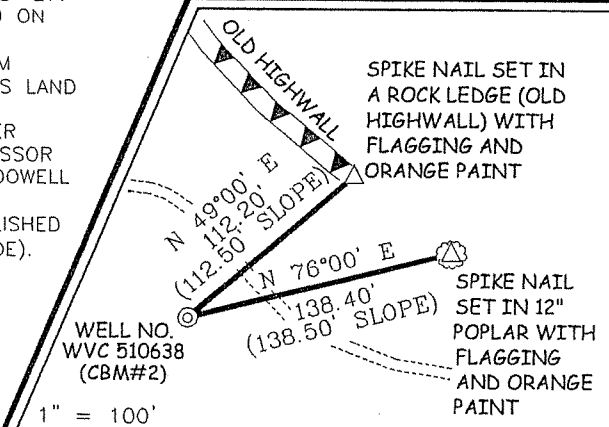


NOTES ON SURVEY

1. TIES TO WELLS AND CORNERS ARE BASED ON GRID NORTH FOR THE WV STATE PLANE COORDINATE SYSTEM SOUTH ZONE NAD '27.
2. TIES TO REFERENCES ARE BASED ON MAGNETIC NORTH 11/17/05.
3. LEASE BOUNDARY TAKEN FROM INFORMATION PROVIDED BY POCAHONTAS LAND CORPORATION.
4. SURFACE OWNER AND ADJOINER INFORMATION TAKEN FROM THE ASSESSOR AND COUNTY CLERK RECORDS OF McDOWELL COUNTY IN OCTOBER, 2005.
5. WELL LAT./LONG. (NAD'27) ESTABLISHED BY DGPS(SUBMETER MAPPING GRADE).

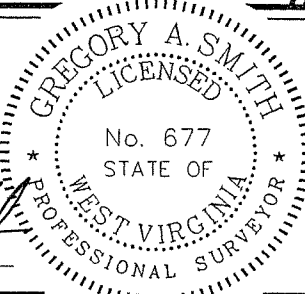


REFERENCES



THIS PLAT IS CORRECT TO THE BEST OF MY KNOWLEDGE AND BELIEF AND SHOWS ALL THE INFORMATION REQUIRED BY LAW AND THE REGULATIONS ISSUED AND PRESCRIBED BY THE DIVISION OF ENVIRONMENTAL PROTECTION.

P.S. 677 *Gregory A. Smith*



(+) DENOTES LOCATION OF WELL ON UNITED STATES TOPOGRAPHIC MAPS.

DATE DECEMBER 05, 20 05

OPERATORS WELL NO. WVC 510638

API WELL NO. 47 — 047 — 021720

STATE COUNTY PERMIT

MINIMUM DEGREE OF ACCURACY 1/2500

PROVEN SOURCE OF ELEVATION DGPS (SUBMETER MAPPING GRADE)

FILE NO. 5905P510638 (202-9)

SCALE 1"=500'

STATE OF WEST VIRGINIA
DIVISION OF ENVIRONMENTAL PROTECTION
OFFICE OF OIL AND GAS

WELL TYPE: OIL GAS LIQUID INJECTION WASTE DISPOSAL IF "GAS" PRODUCTION STORAGE DEEP SHALLOW

LOCATION: ELEVATION 1,612' WATERSHED COALBANK FORK OF MEATHOUSE FORK

DISTRICT SANDY RIVER COUNTY McDOWELL QUADRANGLE BRADSHAW 7.5'

SURFACE OWNER POCAHONTAS LAND CORPORATION ACREAGE 110.77±

ROYALTY OWNER PENN VIRGINIA OIL & GAS, CORPORATION LEASE ACREAGE 15,379.43±

PROPOSED WORK: LEASE NO. WV-497880-01

DRILL CONVERT DRILL DEEPER REDRILL FRACTURE OR STIMULATE PLUG OFF OLD FORMATION PERFORATE NEW FORMATION PLUG AND ABANDON CLEAN OUT AND REPLUG OTHER

PHYSICAL CHANGE IN WELL (SPECIFY) _____ TARGET FORMATION POCAHONTAS #1

ESTIMATED DEPTH 1,800'

WELL OPERATOR EQUITABLE PRODUCTION COMPANY DESIGNATED AGENT STEPHEN G. PERDUE JUN 16 2006

ADDRESS 1710 PENNSYLVANIA AVENUE ADDRESS 1710 PENNSYLVANIA AVENUE

CHARLESTON, WV 25302 CHARLESTON, WV 25302

COUNTY NAME McDOWELL PERMIT 21720