



West Virginia Department of Environmental Protection
Office of Oil and Gas
WELL LOCATION FORM: GPS

API: 47-047-02429 WELL NO.: 024801

FARM NAME: Alawest, Inc

RESPONSIBLE PARTY NAME: Diversified Production LLC

COUNTY: McDowell DISTRICT: Big Creek

QUADRANGLE: Davy

SURFACE OWNER: Alawest, Inc

ROYALTY OWNER: Alawest, Inc

UTM GPS NORTHING: 436,729.59

UTM GPS EASTING: 4,141,220.16 GPS ELEVATION: 407.56 meters ^{1337'}

The Responsible Party named above has chosen to submit GPS coordinates in lieu of preparing a new well location plat for a plugging permit or assigned API number on the above well. The Office of Oil and Gas will not accept GPS coordinates that do not meet the following requirements:

1. Datum: NAD 1983, Zone: 17 North, Coordinate Units: meters, Altitude: height above mean sea level (MSL) – meters.
2. Accuracy to Datum – 3.05 meters
3. Data Collection Method:

Survey grade GPS : Post Processed Differential

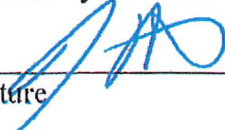
Real-Time Differential

Mapping Grade GPS : Post Processed Differential

Real-Time Differential

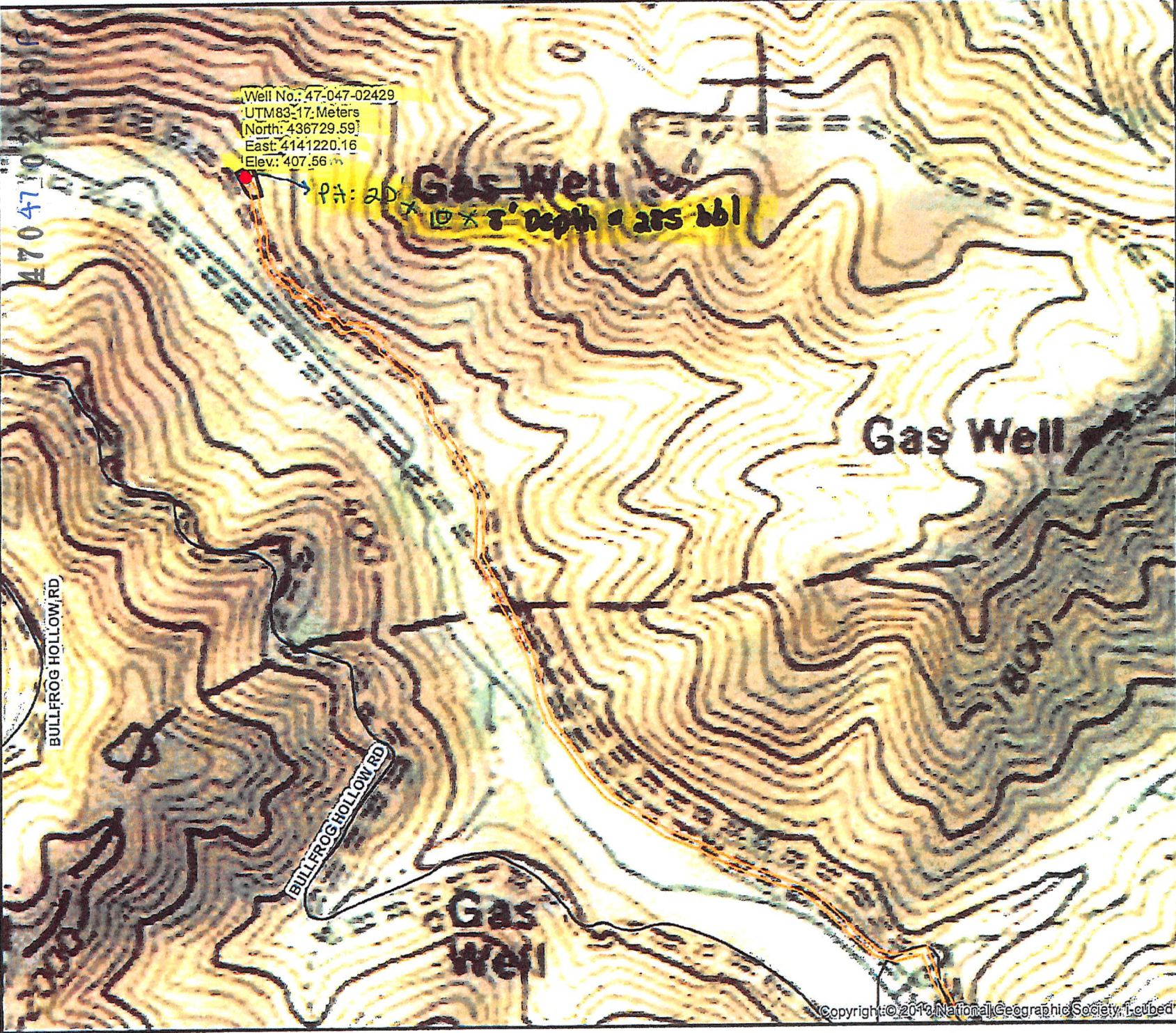
4. Letter size copy of the topography map showing the well location.

I the undersigned, hereby certify this data is correct to the best of my knowledge and belief and shows all the information required by law and the regulations issued and prescribed by the Office of Oil and Gas.


Signature

Director Production
Title

3/03/21
Date



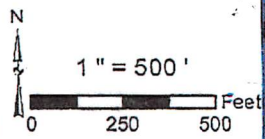
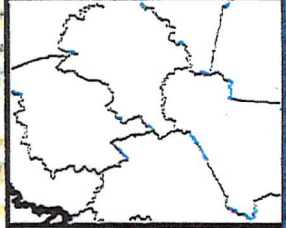
Diversified Gas & Oil Corporation
 100 Diversified Way
 Pikeville KY, 41051

47-047-02429

Plugging Map

Legend

- Well
- Access Road
- Pit
- Pad
- Public Roads



Copyright © 2013 National Geographic Society. All rights reserved.

4704702429P