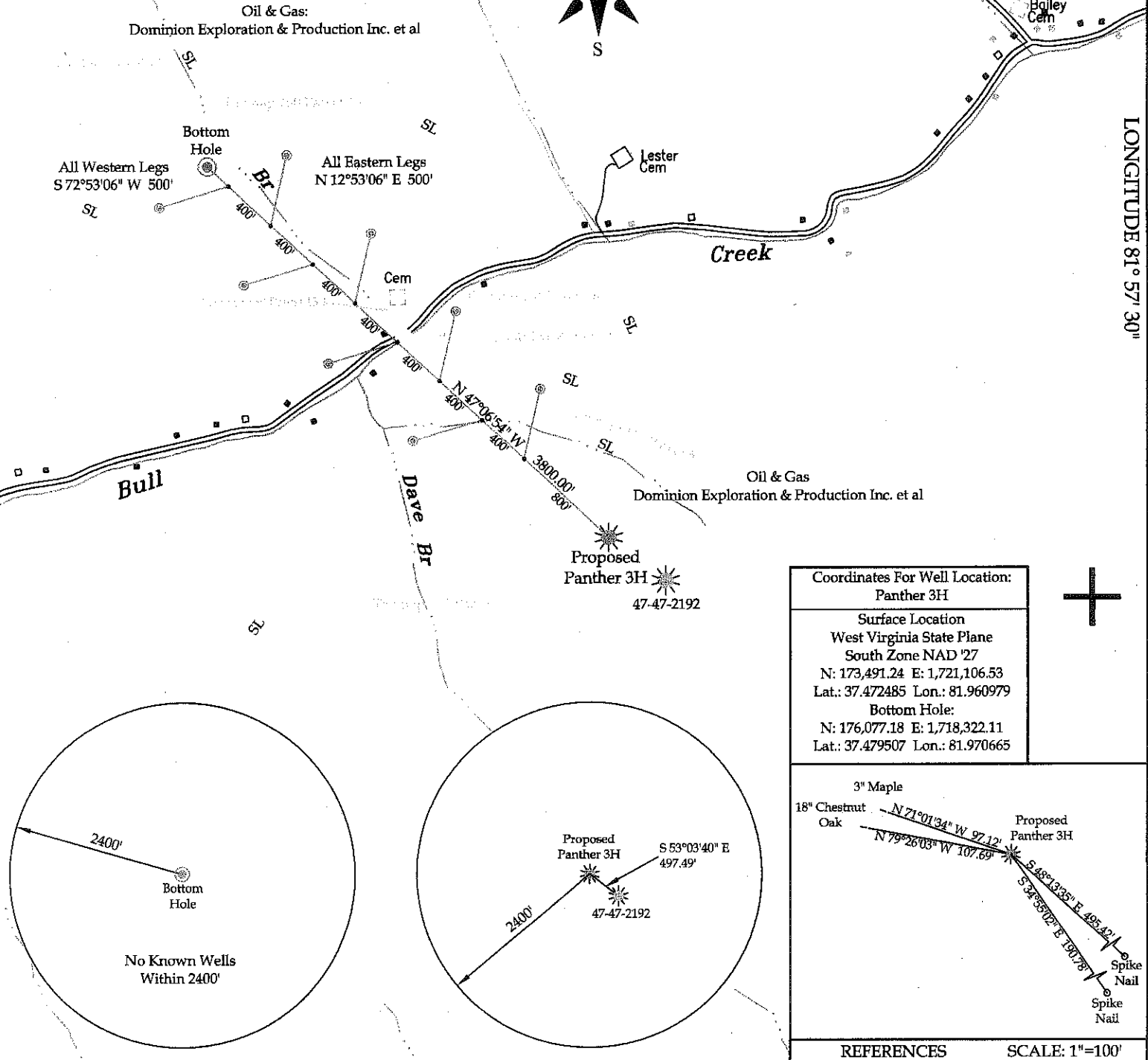
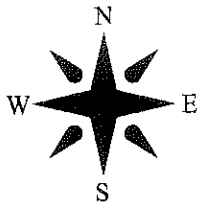
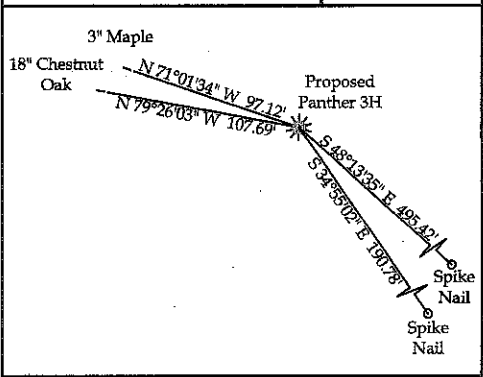
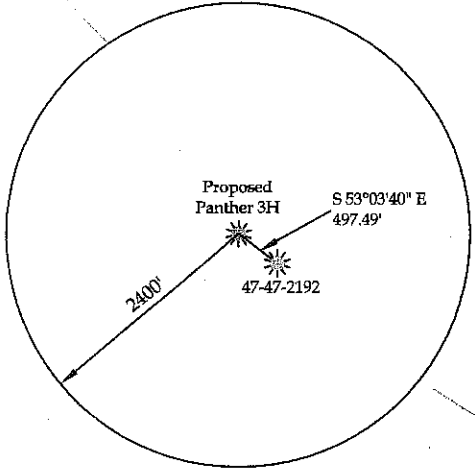
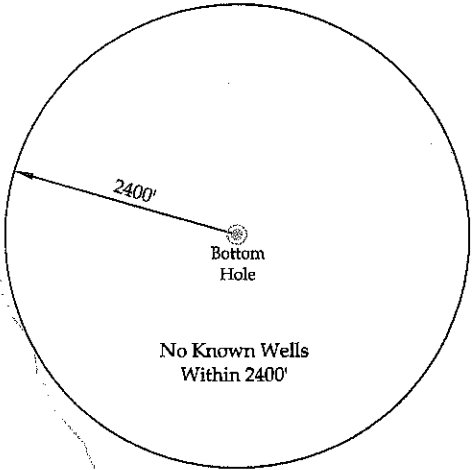


Well Coordinates are based on the West Virginia State Plane Coordinate System NAD '27/NGVD '29 as Calculated From Either NGS/USGS Published control Point or by NGS/NOAA Opus Static Solution. Closed Loop Traverse & Trigonometric Leveling Were Used To Determine Actual Staked Location. Scale Factor/Combined Factor Was Not Applied. Corpcson Was Used To Convert NAD '83 NAVD '88 To NAD '27 NGVD '29.



Coordinates For Well Location: Panther 3H
Surface Location West Virginia State Plane South Zone NAD '27 N: 173,491.24 E: 1,721,106.53 Lat.: 37.472485 Lon.: 81.960979
Bottom Hole: N: 176,077.18 E: 1,718,322.11 Lat.: 37.479507 Lon.: 81.970665

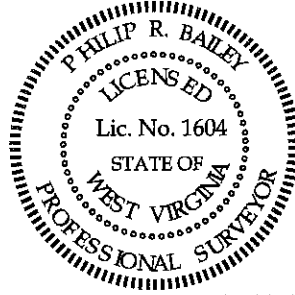


REFERENCES SCALE: 1"=100'

I THE UNDERSIGNED, HEREBY CERTIFY THAT THIS PLAT IS CORRECT TO THE BEST OF MY KNOWLEDGE AND BELIEF AND SHOWS ALL THE INFORMATION REQUIRED BY LAW AND THE REGULATIONS ISSUED AND PRESCRIBED BY THE DIVISION OF ENVIRONMENTAL PROTECTION.

(SIGNED) Philip Bailey

R.P.E. \_\_\_\_\_ R.P.S. X



(H) DENOTES LOCATION OF WELL ON UNITED STATES TOPO MAPS

DATE November 4, 20 09

OPERATOR'S WELL NO. Panther 3H

API WELL 47 - 47 - 02758

No. STATE COUNTY PERMIT

**CANCELLED**

MINIMUM DEGREE OF ACCURACY	FILE NO.	6006-09
<u>1:42,217</u>	SCALE:	<u>1" = 1000'</u>
PROVEN SOURCE OF ELEVATION	DRAWING NO.	<u>3H-plat.dwg</u>
<u>TRIG. LEVELING FROM KNOWN GPS ELEVATION</u>		

STATE OF WEST VIRGINIA  
DIVISION OF ENVIRONMENTAL PROTECTION  
OFFICE OF OIL AND GAS

WELL TYPE: OIL \_\_\_\_\_ GAS X LIQUID INJECTION \_\_\_\_\_ WASTE DISPOSAL \_\_\_\_\_  
(IF "GAS") PRODUCTION \_\_\_\_\_ STORAGE X DEEP \_\_\_\_\_ SHALLOW \_\_\_\_\_

LOCATION: ELEVATION 1804.76 WATER SHED Bull Creek  
DISTRICT Sandy River COUNTY McDowell  
QUADRANGLE Panther

SURFACE OWNER B & W Land, Inc., Big Meadow Co., MMGHD Lands, Inc. & Woodrow Trent Estate ACREAGE 150 Acres  
OIL & GAS ROYALTY OWNER Dominion Exploration & Production Inc. et al LEASE ACREAGE 6067.86 Acres  
LEASE NO. \_\_\_\_\_

PROPOSED WORK: DRILL X CONVERT \_\_\_\_\_ DRILL DEEPER \_\_\_\_\_ REDRILL \_\_\_\_\_ FRACTURE OR STIMULATE \_\_\_\_\_ PLUG OFF OLD FORMATION \_\_\_\_\_ PERFORATE NEW FORMATION \_\_\_\_\_ OTHER PHYSICAL CHANGE IN WELL (SPECIFY) \_\_\_\_\_

PLUG AND ABANDON \_\_\_\_\_ CLEAN OUT AND REPLUG \_\_\_\_\_

TARGET FORMATION \_\_\_\_\_ ESTIMATED DEPTH MD (Main) = 9064' TVD = 5586' MD (Sidetracks) = 4000'

WELL OPERATOR TRIANA ENERGY, L.L.C. DESIGNATED AGENT Ra...  
ADDRESS 900 Virginia Street East, Suite 400 Charleston, WV 25301 ADDRESS: 500 Virginia Street East, Suite 700 Charleston, WV 25301