

WW-7
8-30-06

RECEIVED
Office of Oil and Gas

SEP 27 2019



WV Department of
Environmental Protection

West Virginia Department of Environmental Protection
Office of Oil and Gas

WELL LOCATION FORM: GPS

API: 4705500038 WELL NO.: 12205

FARM NAME: Pocahontas Land Corp

RESPONSIBLE PARTY NAME: Cornerstone Mining, LLC

COUNTY: Mercer DISTRICT: Rock

QUADRANGLE: Crumpler Quad

SURFACE OWNER: Pocahontas Land Corp

ROYALTY OWNER: Pardee Minerals

UTM GPS NORTHING: 4138592.150

UTM GPS EASTING: 471802.933 GPS ELEVATION: ±3050

The Responsible Party named above has chosen to submit GPS coordinates in lieu of preparing a new well location plat for a plugging permit or assigned API number on the above well. The Office of Oil and Gas will not accept GPS coordinates that do not meet the following requirements:

- Datum: NAD 1983, Zone: 17 North, Coordinate Units: meters, Altitude: height above mean sea level (MSL) – meters.
- Accuracy to Datum – 3.05 meters
- Data Collection Method:
 - Survey grade GPS NA : Post Processed Differential NA
 - Real-Time Differential NA
 - Mapping Grade GPS X : Post Processed Differential NA
 - Real-Time Differential ±17'

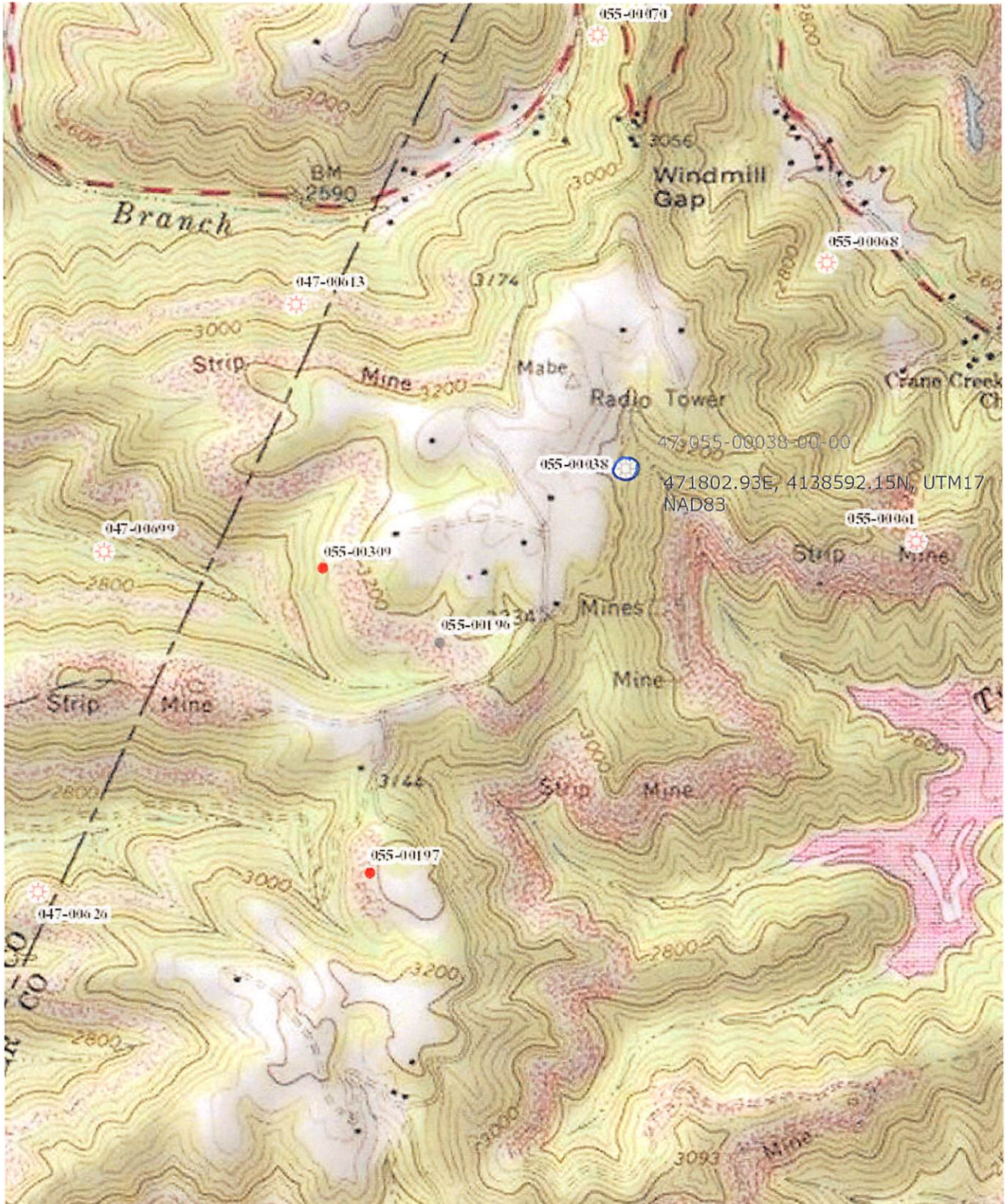
4. Letter size copy of the topography map showing the well location.

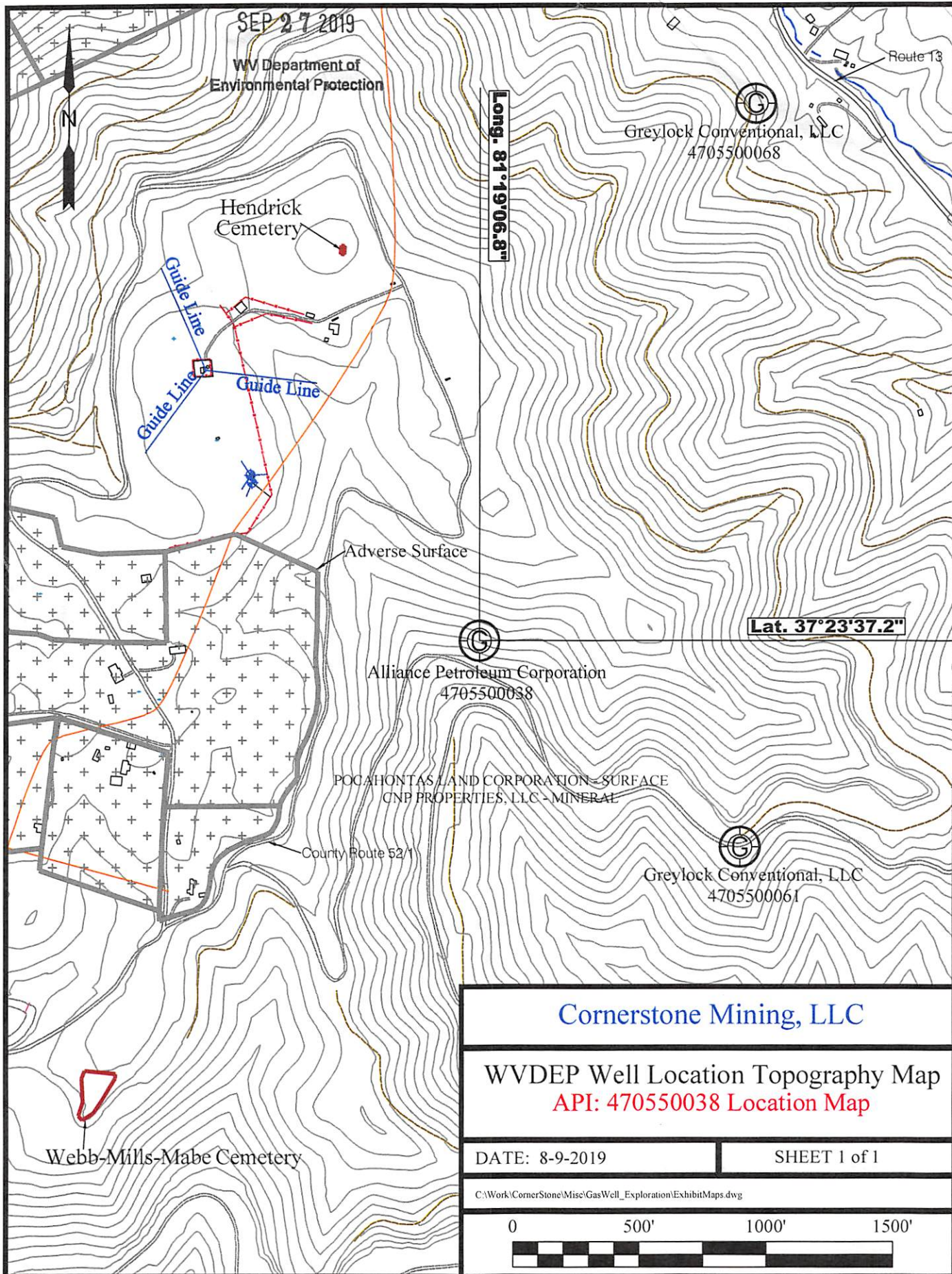
I the undersigned, hereby certify this data is correct to the best of my knowledge and belief and shows all the information required by law and the regulations issued and prescribed by the Office of Oil and Gas.


Signature

Land Agent
Title

08/26/2019
Date





SEP 27 2019

WV Department of
Environmental Protection

Hendrick
Cemetery

Guide Line
Guide Line
Guide Line

Adverse Surface

Alliance Petroleum Corporation
4705500038

POCAHONTAS LAND CORPORATION - SURFACE
CNP PROPERTIES, LLC - MINERAL

County Route 521

Webb-Mills-Mabe Cemetery

Greylock Conventional, LLC
4705500068

Route 13

Long. 81°19'06.8"

Lat. 37°23'37.2"

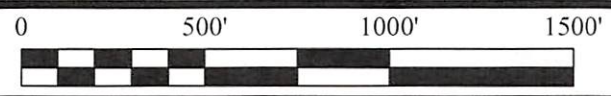
Cornerstone Mining, LLC

WVDEP Well Location Topography Map
API: 470550038 Location Map

DATE: 8-9-2019

SHEET 1 of 1

C:\Work\CornerStone\Misc\GasWell_Exploration\ExhibitMaps.dwg



JK