

WW-7  
8-30-06



West Virginia Department of Environmental Protection  
Office of Oil and Gas

WELL LOCATION FORM: GPS

API: 4705500068 WELL NO.: D-5

FARM NAME: Pocahontas Land Corp

RESPONSIBLE PARTY NAME: Cornerstone Mining, LLC

COUNTY: Mercer DISTRICT: Rock

QUADRANGLE: Crumpler Quad

SURFACE OWNER: Pocahontas Land Corp

ROYALTY OWNER: Pardee Minerals

UTM GPS NORTHING: 4139102.001

UTM GPS EASTING: 472316.053 GPS ELEVATION: ±2700

The Responsible Party named above has chosen to submit GPS coordinates in lieu of preparing a new well location plat for a plugging permit or assigned API number on the above well. The Office of Oil and Gas will not accept GPS coordinates that do not meet the following requirements:

- Datum: NAD 1983, Zone: 17 North, Coordinate Units: meters, Altitude: height above mean sea level (MSL) – meters.
- Accuracy to Datum – 3.05 meters
- Data Collection Method:
  - Survey grade GPS NA : Post Processed Differential NA
  - Real-Time Differential NA
  - Mapping Grade GPS X : Post Processed Differential NA
  - Real-Time Differential ±17'

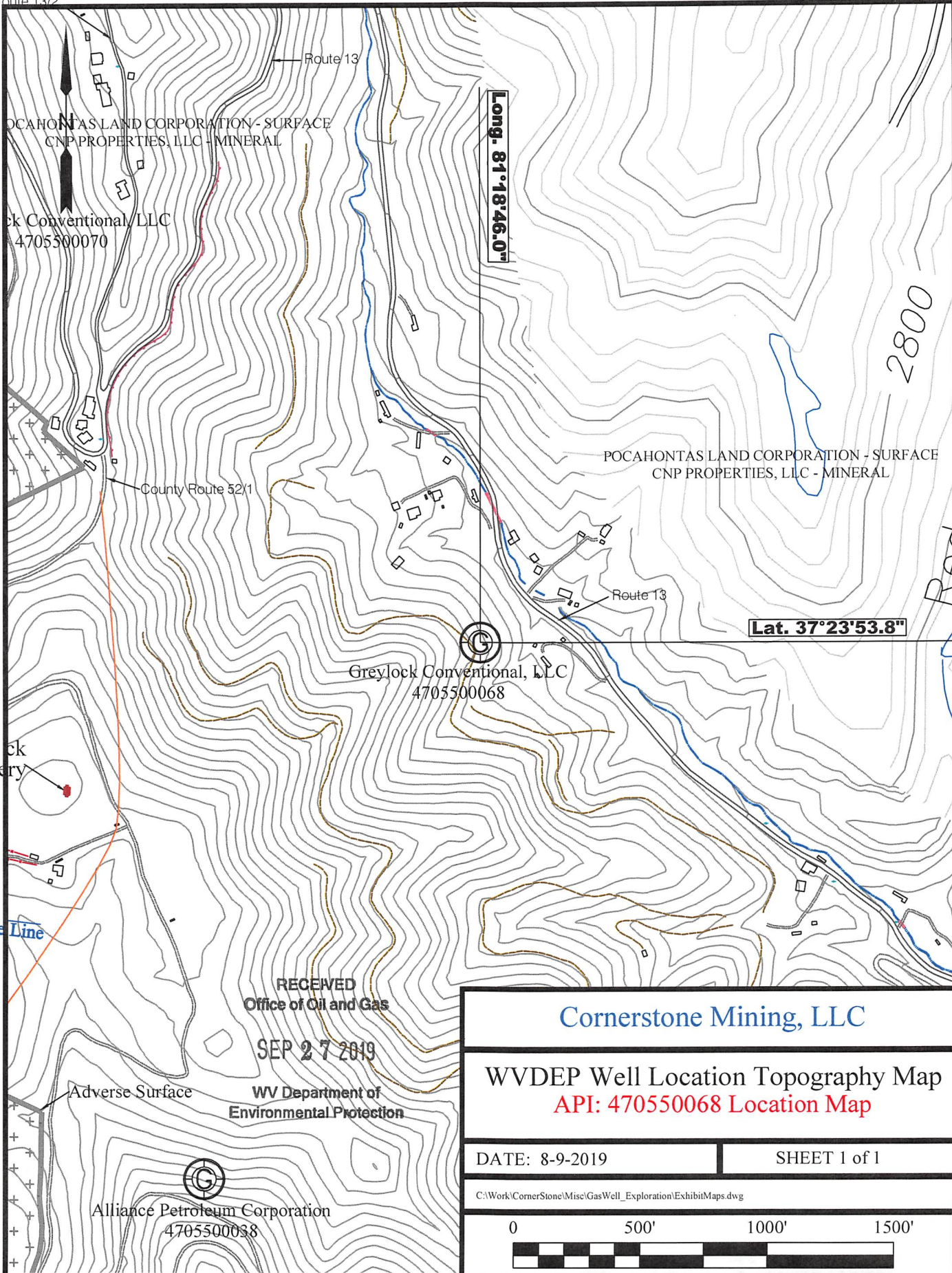
RECEIVED  
Office of Oil and Gas  
SEP 27 2019  
WV Department of Environmental Protection

4. Letter size copy of the topography map showing the well location.

I the undersigned, hereby certify this data is correct to the best of my knowledge and belief and shows all the information required by law and the regulations issued and prescribed by the Office of Oil and Gas.

[Signature] Land Agent 08/26/2019  
Signature Title Date

oute 13/2



Long. 81°18'46.0"

Lat. 37°23'53.8"

2800

RECEIVED  
Office of Oil and Gas  
SEP 27 2019  
WV Department of  
Environmental Protection

### Cornerstone Mining, LLC

WVDEP Well Location Topography Map  
API: 470550068 Location Map

DATE: 8-9-2019

SHEET 1 of 1

C:\Work\CornerStone\Misc\GasWell\_Exploration\ExhibitMaps.dwg

0 500' 1000' 1500'



