

55 00154 P

WW-7  
8-30-06



West Virginia Department of Environmental Protection  
Office of Oil and Gas

**WELL LOCATION FORM: GPS**

API: 47-055-00154 WELL NO.: 11225

FARM NAME: Hawley Coal Mining Corp.

RESPONSIBLE PARTY NAME: CNX Gas Company LLC

COUNTY: Mercer DISTRICT: Rock

QUADRANGLE: Odd, WV

SURFACE OWNER: Pardee & Curtain Realty LLC

ROYALTY OWNER: Pardee & Curtain Realty LLC

UTM GPS NORTHING: 4,152,221 m

UTM GPS EASTING: 482,086 m GPS ELEVATION: 968 m 3098 Ft.

The Responsible Party named above has chosen to submit GPS coordinates in lieu of preparing a new well location plat for a plugging permit or assigned API number on the above well. The Office of Oil and Gas will not accept GPS coordinates that do not meet the following requirements:

- Datum: NAD 1983, Zone: 17 North, Coordinate Units: meters, Altitude: height above mean sea level (MSL) – meters.
- Accuracy to Datum – 3.05 meters
- Data Collection Method:

Survey grade GPS  : Post Processed Differential

Real-Time Differential

Mapping Grade GPS  : Post Processed Differential

Real-Time Differential

- Letter size copy of the topography map showing the well location.**

I the undersigned, hereby certify this data is correct to the best of my knowledge and belief and shows all the information required by law and the regulations issued and prescribed by the Office of Oil and Gas.

J. M. McCoy  
Signature

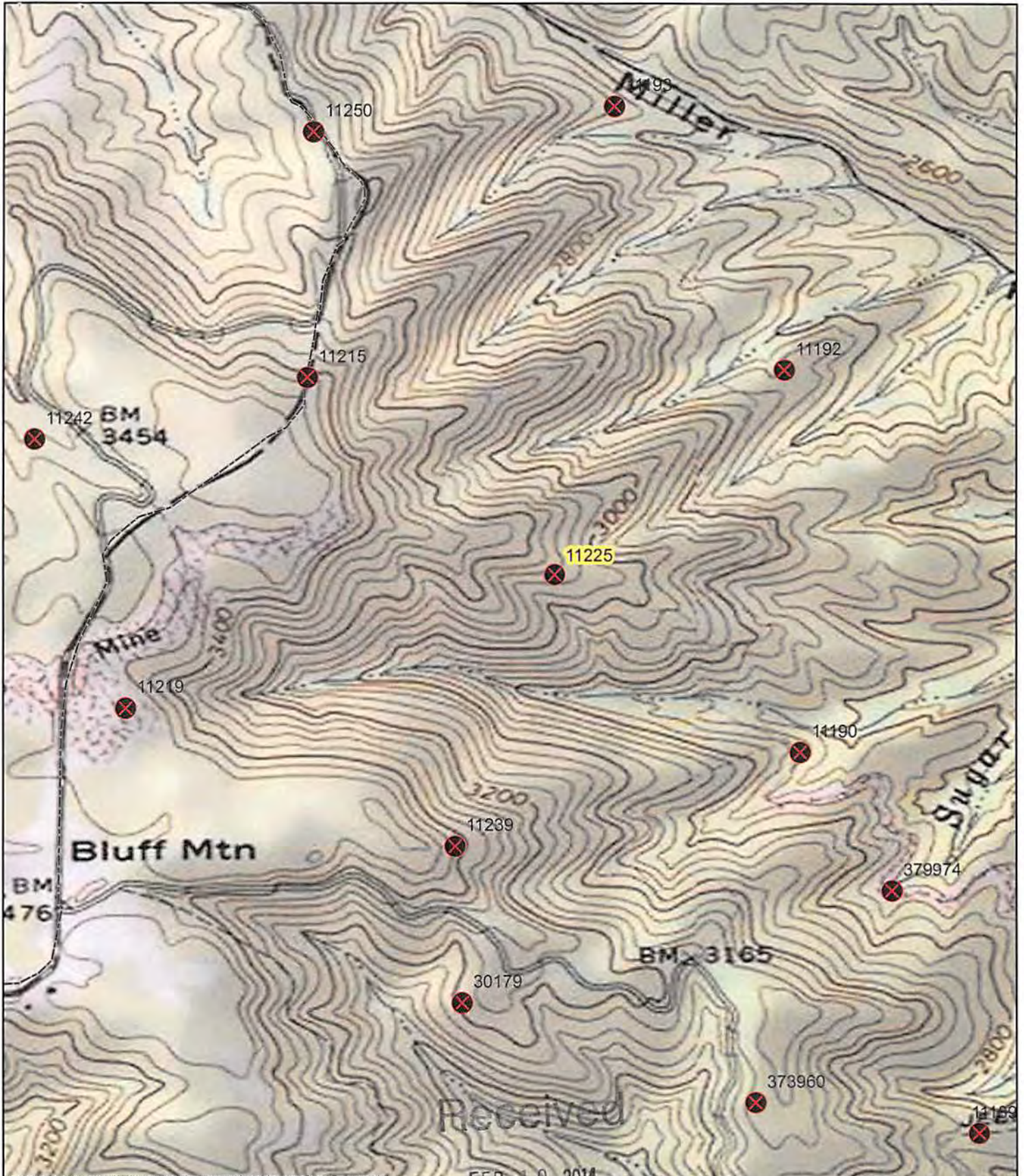
Production Coord  
Title

2-6-2014  
Date

Received

FEB 10 2014

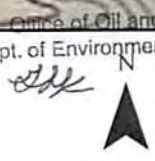
Office of Oil and Gas  
WV Dept. of Environmental Protection



Received  
FEB 10 2014

subsidaries and affiliates, collectively "CEI", make no representations or warranties of any kind or character concerning the completeness or accuracy of this information and assumes no responsibility or liability of any kind for such information. The Recipient of this information acknowledges and assumes all risk of the use of such information. In consideration of CEI providing this information, the recipient forever waives and releases any and all claims or causes of action the Recipient may ever have against CEI, its officers, directors, employees or agents relating to or resulting or arising from its use of the information. Acceptance of this information by the recipient constitutes agreement with all the terms and conditions in the notice

Office of Oil and Gas  
WV Dept. of Environmental Protection



500 1,000 Feet	
Date: 1/24/2014	Prepared By: KK
Revisions:	Approved By: BS
This map is property of CONSOL Energy Inc. and contains information that is proprietary and confidential in nature and may not be copied or reproduced without prior written consent.	

Copyright © 2013 National Geographic Society, i-cubed

**CONSOL ENERGY**  
PROPOSED PLUGGING  
WELL NUMBER 11225  
API# 47-055-00154  
GENERAL LOCATION MAP